

APRIL 1965
NUMBER 8
VOLUME 10

Published by the CANAVERAL SECTION of the INSTITUTE of ELECTRICAL and ELECTRONICS ENGINEERS

CANAVERAL SECTION IEEE MEETING

THURSDAY, 15 APRIL 1965

Schrafft's Carriage House, Cocoa Beach

MEET-THE-SPEAKER DINNER 6:30 PM

No reservations needed — order from the menu

EXECUTIVE COMMITTEE MEETING 5:30 PM

(Section members welcome to listen in)

8:00 PM

LT. COMMANDER CHARLES R. CLARK, USN

Head, Range Operations Branch

U. S. Naval Ordnance Test Unit, Patrick Air Force Base
will present

PART II — THE NUCLEAR SUBMARINE UNIQUE ENGINEERING PROBLEMS

The operational requirements of the nuclear submarine place unique constraints on the design of the varied electronic systems that make submarine warfare possible. The maneuverability and sensitivity to controls

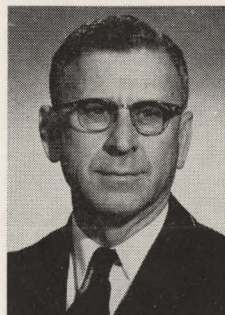
of the modern high performance submarine exceed that of a fighter plane. What type of controls and instrumentation had to be developed for this form of "blind flying"?

How much do we know about the medium in which the submarine travels? How does oceanographic research apply to the various submarine systems? How has electronics improved our state of the art in oceanography?

How does the submarine employ its weapons systems effectively with the meager information available from passive means? The fire control problem will be discussed with the computer types and techniques utilized.

The future possibilities of submarines will be covered, including the still unsolved problems of electrical and electronic systems.

NOMINEES FOR OFFICERS OF CANAVERAL SECTION IEEE FOR 1965



F. J. CLARK
CHAIRMAN



L. E. WILLIAMS
VICE-
CHAIRMAN



G. KARGER
SECRETARY

H. A. POEHLER
TREASURER



These nominees have been presented by the Nominating Committee chaired by H. O. Peterson with Ray Work, John B. D'Albora and Bill Habernern as members. See the Chairman's message for procedures to present other names as nominees. Election will take place at the May meeting and installation at the June Meeting.

F. J. CLARK

F. J. (JACK) CLARK, nominated for Chairman has been associated with ETR since 1951 when he came here as an engineer in the AFMTC group planning, developing and installing range equipment. In 1954 he joined RCA as supervisor in instrumentation planning and coordination, and in 1958 he returned to AFMTC in the Data Instrumentation of Directorate of Range Development. Since 1960 he has been in the MISTRAM Project office which he now heads at ETR.

He has served on a number of assignments in the Electronic Trajectory Measurements Working Group (ETMWG) of the Inter-Range Instrumentation Group (IRIG) and

was elected Vice-Chairman in 1963.

Jack received the BEE degree from Univ. of Florida; served as aviation electronic maintenance officer in USN during WWII; spent 5 years with Navy BuAer as project officer on radar bombing and fire control systems. He is Commanding Officer of the Research Reserve Co., 6-16, Patrick AFB, an inactive reserve unit. He is currently working on a master's degree in R & D Management through FICUS.

He is a Senior member of IEEE and has served the Canaveral Section as Treasurer, 1962, Secretary, 1963, and Vice-Chairman, 1964, as well as Chairman of the Awards Committee in 1960.

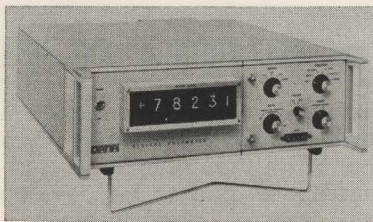
L. E. WILLIAMS

LAVERGNE E. WILLIAMS, nominee for Vice-Chairman, is a member of the technical staff at Aerospace Corp. on the Titan III Program. Prior to this he was at Radiation, Inc. on the technical staff of the RF Systems Dept. and as head of the Antenna and Microwave Section.

Before joining Radiation LaVergne was an Associate Professor of EE at Univ. of Conn. for 10 years and before that Asst. Prof. of EE at Univ. of Pittsburgh. While with these universities he served as consulting engineer.

He has a BSEE (with highest distinction) from Univ. of Conn.; MSEE and study on his continued on page 3

DANA



SENSATIONAL NEW 5600 SERIES DVM FROM DANA LABORATORIES

- Potentiometric Null-Balance with solid state switching
- Full five-digit reading with automatic range and polarity
- Complete Multimeter capability using plug-in boards
- Accuracy 0.01% of reading is guaranteed for 6 months after calibration
- Balance time is 22 milliseconds
- Common-mode rejection 120 db AC & DC, higher with switchable filter

For more information, Call,
Wire or Write:



Phone:
4 Wavecrest Dr. (305) 723-6924
Indialantic, Fla. (305) 783-9407
Cocoa Beach
TWX: (305) 723-7553

BOB FILLINGHAM HARVEY ECKENRODE
TOM MEDEROS BOB DeGIOVANNI



**CHAIRMAN'S
CORNER
P. H. BETTS**

Of chief concern this month is the work of the Nominating Committee appointed in February. The Chairman, who is one of our Fellow Members, H. O. Peterson, a recent retiree from RCA, was assisted by BEC's Dean Ray Work, Western Electric Resident Technical Director John B. D'Albora, and our section's senior past chairman, William J. Haberhern as ex-officio advisor on protocol. The resulting slate of nominees with their respective technical pedigrees and background is detailed in this issue.

Under our By-Laws additional nominations may be made from the floor at the April meeting provided that each such nomination is accompanied by a petition signed by at least 10 of our section voting members. Such petitions should include a photo and technical background of the nominee for publication in the May issue of the IRE with the list of other nominees.

The election takes place at the May meeting if a quorum of 15 voting members is present. Installation of the new officers takes place at the June meeting.

Your Section Chairman and every member of the Executive Committee regrets that Tom Mederos has had to give up his post as General Manager of the Indian River Engineer. In pulling the magazine out of the red, he has established a fine bogie for his successor, R. A. Fillingham, to shoot at. We all wish both of them the best of everything in their respective futures.

The wife of Section Publicity Chairman Cliff Mattox is seriously ill in Wuestoff Hospital, Cocoa.

NEW STAFF ADDED

This month we have two new staff members. Bob Fillingham takes over from Tom Mederos as General Manager — which includes the tricky job of getting enough advertising revenue to pay the bills. Bob is

continued on page 4

THE INDIAN RIVER ENGINEER

A Monthly Publication of the
Canaveral Section

Institute of Electrical and Electronics Engineers

Address all correspondence concerning news, meeting notices, articles to
THE EDITOR - Mrs. Betty Preece
615 N. Magnolia Ave., Indialantic PA 3-6835

Address all other correspondence including advertising to
THE GENERAL MANAGER
R. A. Fillingham

4 Wavecrest Avenue, Indialantic, Phone
(305) 723-6924 or 723-7553 TWX 783-7469
ASSOCIATE EDITOR - Mrs. Eileen K. Drew
PA3-5008

PHOTOGRAPHY - Dr. Kenneth Relf
Day - 784-5274 Night - AM 2-3232
Mr. Wilbur Allaback, AM 2-1812

SEND CHANGES OF ADDRESSES TO:
IEEE, Box A, Lennox Hill Sta. New York, N.Y.

SECTION OFFICERS

CHAIRMAN - P. H. Betts
Box 1252, Titusville
267-1486 Home - 267-5794

VICE CHAIRMAN - F. J. Clark, ETR
298 Glenwood Avenue, Satellite Beach
Day - 494-7435 Home - AM2-5087

SECRETARY - LaVergne Williams, Aerospace
Corp Phone UL3-5848

Box 658, Melbourne Beach Home PA3-5016
TREASURER - Frank P. Turvey, PAA
109 Freddie St., Satellite Beach

Day - 494-4179 Home AM2-2816

G/SET CHAIRMAN Jack Johnson, NASA
661 Java Road, Cocoa Beach
Day - UL3-6645 Home SU3-4843

VICE CHAIRMAN - A. C. Nash, Radiation
Day - PA3-1511 X7265 Home PA3-2633

SEC/TREAS - Robert Kimmell McDonnell
G/COMMUNICATIONS

CHAIRMAN - J. P. Anderson, RCA
945 Samar Road, Cocoa Beach
Day - UL3-5281 Home 783-4135

VICE CHAIRMAN Wm. C. Euler, ICF
Day - PA3-8112 Home 262-3368

G/ELECTROMAGNETIC COMPATIBILITY
CHAIRMAN Raymond P. Rice
205 Debra Ct., Satellite Beach

Day - 494-4538 Home 262-5131

VICE CHAIRMAN - O. B. RAWLS, RCA
Day - 494-6349 Home NE6-2694

TREASURER - F. P. Fifield, Radiation
Day - PA3-1511X601 Home PA3-4502

G/RELIABILITY
CHAIRMAN John LaCapra, Radiation
Box 37, Melbourne

Day - PA3-1511 Home PA3-5867

VICE CHAIRMAN - Dave E. Lane, GE/ASD
Box 2500, Daytona Beach

SEC/TREAS. - John E. Johnson, Radiation
Day - PA3-1511 Home 262-5246

PROGRAM - Dr. H. Poehler, PAA
Day - 494-7750 Home AM2-1686

MEMBERSHIP - J. G. Madry, M. D.
Day - AM2-2500, PA3-5005 Home PA3-5006

FALL SEMINAR - R. E. Marquand, Radiation
Day - PA3-1511X7146 Home PA3-7035

PUBLICITY - C. E. Mattox, DBM Research
Day SU3-2438 Home NE6-6191

ACCOMMODATIONS - Robert P. Henderson,
Radiation - Day PA3-1511 Ext. 7266

BEC STUDENT ASSOCIATE BRANCH - Advisor: Ray Work, phone day & night PA3-3701 home PA3-5465; Chairman, C. J. Leaney, home 254-2134; Vice-Chairman, George Reid, PA3-3701; Sec'y, Fred Lambert; Treas., Dave Wentworth. Meetings the 2nd Thurs. of the month, 7 PM, BEC Library.

NOMINEES - continued from page 1 WILLIAMS—

doctoral degree from Univ. of Pittsburgh and Yale. He is the author of a number of papers and holds several patents. He is a Senior Member of IEEE, and a member of Tau Beta Pi, Eta Kappa Nu, Sigma Pi Sigma, Sigma Tau, and Phi Kappa Phi, and a registered professional engineer in Fla. and Conn.

GUNTHER KARGER

GUNTHER (GUS) KARGER is the Secretary nominee. He is an Associate Principal Engineer and a Staff Communication System Analyst with the Surface Div. at Radiation, Inc.

He was previously associated with ITT Communication Systems, Inc., Paramus, N. J., where he was Project Manager responsible for developing command control communication requirements for the USAF Strategic Air Command and conceptual design of an advanced emergency airborne communication system providing multichannel ground - air, air - air service and subscriber network entry on a random access basis. He also served as consultant to several USAF panels. Previous assignments at ITT included the telemetry design, installation, checkout and launch of the Courier Communication Satellite ground terminals and network engineering of the Mediterranean Tropospheric Scatter System.

He was associated with Microwave Services International, Inc., Denville, N. J. as Assistant Head of the Propagation Department which was responsible for route selection of the Western Union transcontinental microwave network, and Staff Consultant to the President, responsible for industrial communication system services, marketing and special projects, including telecommunication system planning for utilities, product market research investigative aspects of corporate acquisition and management consulting.

He was on active duty in the USAF 1951-1955 as an Instructor in Airborne Electronics and Meteorological Systems.

Mr. Karger has supported the IEEE locally and nationally for several years. He served as Professional Groups Coordinator, Editor and Member of the Northern New Jersey Section Executive Committee 1959-1964, co-founded the North Jersey Communication Technology Group Chapter and served as its chairman 1963-1964.

He has been a member of the National Telecommunication and Radio Review Committee since 1962 and is the present Editor of the IEEE Communication Technology Group NEWSLETTER.

Gus, born in Lahr, Germany, graduated from Louisiana State Univ. He is the author of several papers in the Telecommunication field and has been consultant to the management of national technical symposia. Mr. Karger was cited as "Outstanding Young Engineer" by the Ninth National Communication Symposium, 1963 and is listed in the First Edition of "Outstanding Young Men of America", sponsored by the U. S. Junior Chamber of Commerce.

HORST A. POEHLER

DR. HORST A. POEHLER, nominee for Treasurer, has been associated with the Air Force Eastern Test Range since 1958, when he came to Florida to join the Technical Staff of Space Technology Laboratories.

From 1948 to 1958, Dr. Poehler participated in the design of the first Doppler Navigation Systems, while employed by General Precision Laboratory, Pleasantville, N. Y., as Section Head.



NEW DUAL-TRACE DC-to-15 Mc Portable Oscilloscope

Light weight—less than 21 pounds, with panel cover and included accessories.

Small size—only 7 1/8" high, 10" wide, 16" deep, overall.

Low cost—only \$1325 (AC version).

U.S. Sales Price, f.o.b. Beaverton, Oregon

Send for
Specification Booklet

Tektronix, Inc. ORLANDO FIELD OFFICE

205 EAST COLONIAL DRIVE • ORLANDO, FLORIDA • 425-3483

From 1958 to 1964, he served at Space Technology Labs as a member of the Technical Staff, responsible for the solution of missile instrumentation and tracking problems. While with STL, Dr. Poehler published a series of papers on the flame attenuation

problems.

In July 1964, Dr. Poehler joined the Pan American World Airways Guided Missiles Range Division as a Scientist on the Technical Staff. In this position, Dr. Poehler is continued on page 4

we've reserved a copy for you...

TECHNIPOWER'S 1965 REFERENCE CATALOG

containing over 4,000 power supply modules including the new Laboratory Modules Series with twice the output ratings of comparable units.



This informative manual also includes AC-DC Modules, DC-AC Inverters and DC-DC Converters. From a single supplier you have a choice of power sources to meet any military and commercial application.



TECHNIPOWER

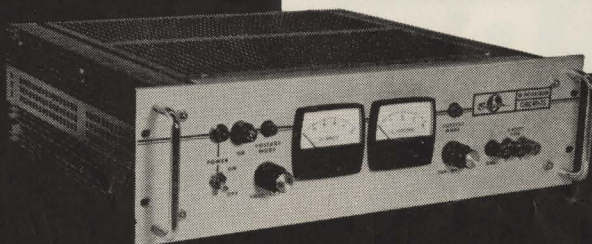
A BENRUS SUBSIDIARY

18 MARSHALL STREET, SOUTH NORWALK, CONNECTICUT

Just Call

WRITE A SPEC FOR YOUR IDEAL POWER SUPPLY

THEN Compare*
IT WITH SORENSEN'S NEW QRC SERIES



YOUR REQUIREMENTS

(Fill in and compare with our standard specifications)

VOLTAGE REGULATION _____
CURRENT REGULATION _____
VOLTAGE RIPPLE (RMS) _____
CURRENT RIPPLE _____
OTHER REQUIREMENTS _____

First, start with voltage regulation of $\pm 0.005\%$ line and load combined ■ Then, add voltage ripple of 1 mv RMS ■ Current regulation of $\pm 0.05\%$ of maximum current output ■ Current ripple as low as 1 ma RMS ■ Transient response 50 μ sec. to return to ± 20 mv band ■ Excellent stability, typically 0.05% for 8 hours (after warm-up) ■ Resolution approximately 0.01% ■ Input versatility 105-125/200-240 VAC, 50 to 400 CPS ■

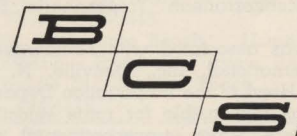
Then, build in every conceivable design feature like: High efficiency ■ Constant voltage/constant current crossover (so sharp the units never leave the specified regulation bands) ■

Constant voltage/constant current indicator lights ■ Vernier controls on both voltage and current adjustments ■ Output voltage and current meters ■ Voltage and current programming ■ Series/parallel operation ■ Remote sensing ■ No turn-on, turn-off overshoots ■ Plug-in control boards ■

Price? How about \$450 for 0-40 volts, 0-8 amps, in a 3½" high package? Still want to compare? For more information on the QRC series, contact BCS Associates ■



A UNIT OF RAYTHEON COMPANY



ASSOCIATES, INC.

Electronic Instrument Representatives

P. O. BOX 6578, ORLANDO, FLA.

TEL: 425-2764 TWX 305-275-0422

Bill Bivins, Dick Cunningham, Doug Severance



ELECTRICAL AND MECHANICAL SPECIFICATIONS

MODEL NUMBER	OUTPUT VOLTAGE RANGE (VDC)	OUTPUT CURRENT RANGE (AMPS)	VOLTAGE REG. (LINE & LOAD COMBINED)	VOLTAGE RIPPLE RMS	RACK HEIGHT (INCHES)	PRICE
QRC20-8	0-20	0-8	$\pm 0.005\%$ or ± 1 mv	1 mv	3½	\$410
QRC40-4	0-40	0-4	$\pm 0.005\%$ or ± 1 mv	1 mv	5¼†	315
QRC40-8	0-40	0-8	$\pm 0.005\%$ or ± 1 mv	1 mv	3½	450
QRC40-15	0-40	0-15	$\pm 0.005\%$ or ± 1 mv	1 mv	5¼	575

†Half rack.

NEW STAFF - continued from page 2

president of Medco, Inc., in Indianapolis. He formerly was President of Dynex, Inc., a electronics equipment rep. firm, and came to Fla. with Radiation, Inc. He was with Thompson Ramo Wooldridge in Denver and Remington Rand Univac in St. Paul, and served in USAF.

He is a member of AOA, ISA and IEEE.

Our new Associate Editor, Mrs. Eileen K. Drew, begins by taking over the Changing Faces column. She has a BA in English from Montclair State College in New Jersey and was an editor with the Silver Burdett Textbook Company in NYC and Managing Editor for the magazine "RN - a Journal for Nurses."

JESSI NEEDS YOU

For the first time Brevard Engineering College will host JESSI (Junior Engineers' and Scientists' Summer Institute) 13-26 June. Co-host with BEC is Kennedy Space Flight Center.

JESSI is a 13-day exploration and orientation in the science and engineering areas of learning. The institutes have been held in class-size groups on campuses of colleges throughout the nation for the past 9 years. Participating this summer are 12 colleges. JESSI is designed to help take the GUESS from career decisions by giving interested 11th and 12th grade students an academic insight into the pure and basic applied sciences, and some some knowledge

of the study programs and career opportunities in the science and engineering fields.

Dr. David Woodbridge, BEC's Director of Research, is the JESSI Director. He NEEDS HELP FROM THOSE LOCAL ENGINEERS AND SCIENTISTS who will take an hour or two to talk to these students about math, chemistry, space engineering, communications, geology, etc. Call Dr. Woodbridge at PA3-3701.

POEHLER - continued from page 3

cerned with basic scientific problems that affect the Range's ability to meet its ballistic missile and space launch commitments.

Dr. Poehler received his B. E. E. degree from the Polytechnic Institute of Brooklyn in 1939 and his M. A. and Ph. D. from Columbia University in Pure Science under the Faculty of Electrical Engineering in 1942 and 1948 respectively.

He is a Senior Member of the I. E. E. E., and Associate Fellow of the A. I. A. A., a Member of the Health Physics Society, a Member of the American Geophysical Union, and a Member of the Linguistic Society of America. He has served the Canaveral Section as Interim Vice-Chairman in 1961, and as Program Chairman for the period 1962-1964.

U. S. POSTAGE
Paid 1¼¢
Permit No. 6
EAU GALLIE, FLORIDA
Non-Profit Organization