

A Meeting of Appreciation and Tribute to FRANK J. SPRAGUE

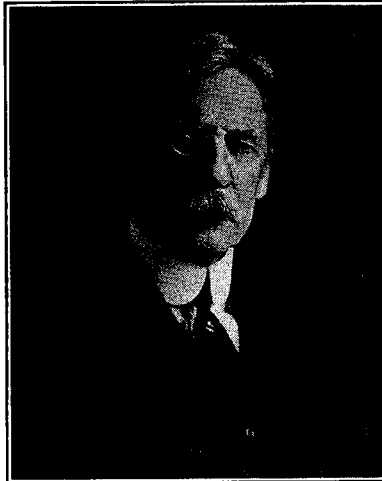
1857 ~ Seventy-five Years ~ 1932

Engineer

MONDAY
July 25, 1932
8:00 P.M.

Members
of
Societies
and Friends
are
invited

Scientist



Inventor

Pioneer electrical applications ~ electric motors ~ railways ~ elevators

AN ENGINEER'S CONTRIBUTION TO THE WORLD'S WELFARE: *Dr. John H. Finley*

AN ENGINEER'S CONTRIBUTION TO TRANSPORTATION: *Mr. Frank Hedley*

FRANK J. SPRAGUE — A TRIBUTE: *Rear Admiral S. S. Robison, U. S. N. (ret.)*

Response: MR. FRANK J. SPRAGUE

FRANK J. SPRAGUE ANNIVERSARY COMMITTEE

GANO DUNN, *Chairman*

CARY T. HUTCHINSON, *Secretary*

C. E. SKINNER	President, American Institute of Electrical Engineers
C. N. LAUER	President, American Society of Mechanical Engineers
H. S. CROCKER	President, American Society of Civil Engineers
SCOTT TURNER	President, American Institute of Mining Engineers
C. P. PERIN	President, American Institute of Consulting Engineers
O. H. CALDWELL	President, New York Electrical Society
H. HOBART PORTER	President, The Engineering Foundation
H. A. KIDDER	President, United Engineering Trustees
G. A. RICHARDSON	President, American Electric Railway Association
J. F. OWENS	President, National Electric Light Association
G. P. JESSOP	President, Naval Academy Graduates Association of N. Y.
J. HOWLAND GARDNER	President, Society of Naval Architects and Marine Engineers
CHARLES M. SCHWAB	President, American Iron and Steel Institute
NICHOLAS MURRAY BUTLER	President, Columbia University
THOS. S. GATES	President, University of Pennsylvania
HARVEY N. DAVIS	President, Stevens Institute
HOWARD McCLENAHAN	Secretary, Franklin Institute
C. G. ABBOTT	Secretary, Smithsonian Institution
GEO. LEBOUTILLIER	President, New York Railroad Club
THOS. ROBINS	Secretary, The Naval Consulting Board

Bion J. Arnold	E. E. Dorting	William J. Hammer	James H. McGraw	E. W. Rice	Elihu Thomson
Merlin H. Aylesworth	Ralph Earle	J. H. Hanna	W. S. Menden	A. W. Robertson	Philip Torchio
G. P. Baldwin	W. L. R. Emmet	Frank Hedley	F. A. Merrick	S. S. Robison	J. H. Van Alstyne
C. A. Benton	Thomas Ewing	Frank B. Jewett	W. S. Murray	F. A. Scheffler	S. M. Vauclain
E. R. Carichoff	John H. Finley	A. E. Kennelly	R. B. Owens	F. H. Shepard	H. H. Vreeland
John J. Carty	Bradley A. Fiske	Myles B. Lambert	W. B. Potter	William S. Sims	Edward Weston
Mortimer E. Cooley	George Gibbs	S. H. Libby	Charles R. Pratt	L. B. Stillwell	W. J. Wilgus
Oscar T. Crosby	L. P. Graner	A. D. Lundy	Charles W. Price	Ambrose Swasey	Owen D. Young
	Howard F. Gurney	C. O. Mailloux	Michael I. Pupin	Gerard Swope	

ENGINEERING SOCIETIES AUDITORIUM, 29 WEST 39th STREET, NEW YORK

Secretary's address — 52 WILLIAM STREET, NEW YORK CITY