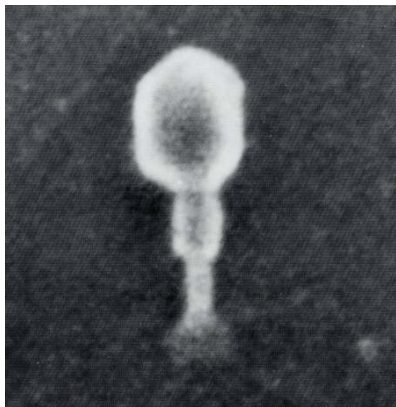
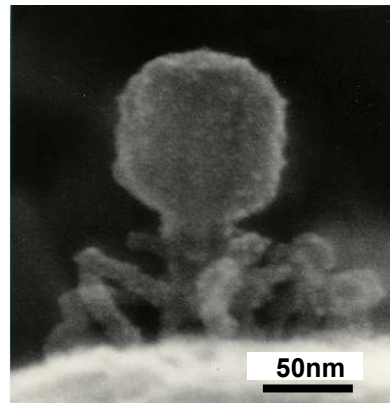




**Hitachi's World First Commercial
FE-SEM, Model HFS-2 (1972)**

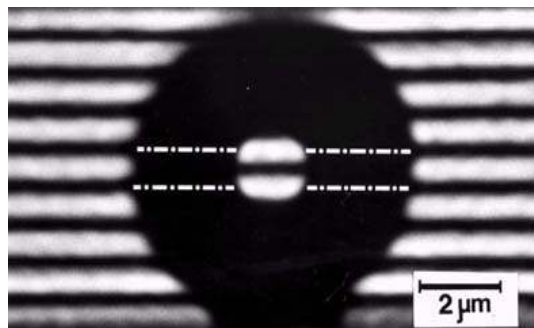


**Photo: Prof. A. V. Crewe
(Chicago Univ.)(1972)
Equip.: HFS-2 FE-SEM**



**Photo: Prof. K. Tanaka
(Tottori Univ.)(1988)
Equip.: In-lens type FE-SEM**

Observation of bacteriophage



**Experimental Evidence for
Aharonov-Bohm Effect,
T. Tonomura (Hitachi CRL) (1986)**