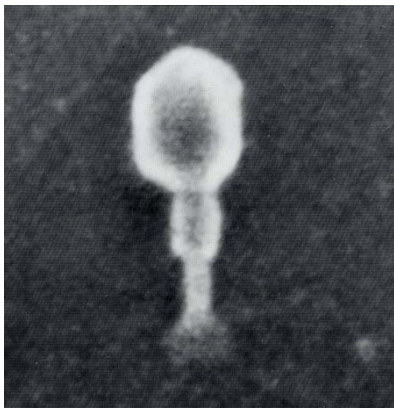
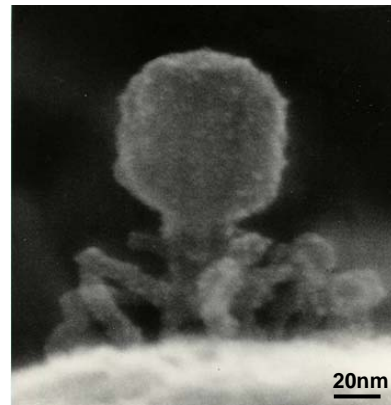




**Hitachi's World First Commercial  
FE-SEM, Model HFS-2 (1972)**

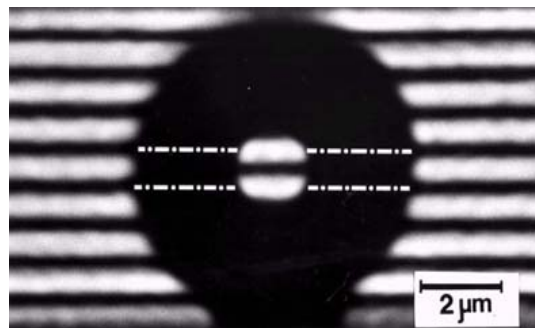


**Photo: Prof. A. V. Crewe  
(Univ. of Chicago) (1972),  
Equipment: HFS-2 FE-SEM**



**Photo: Prof. K. Tanaka  
(Tottori Univ.)(1988)  
Equip.: In-lens type FE-SEM**

### **Observation of T2-bacteriophages**



**Experimental Evidence for  
Aharonov-Bohm Effect by Electron Holography  
T. Tonomura (Hitachi CRL) (1986)**