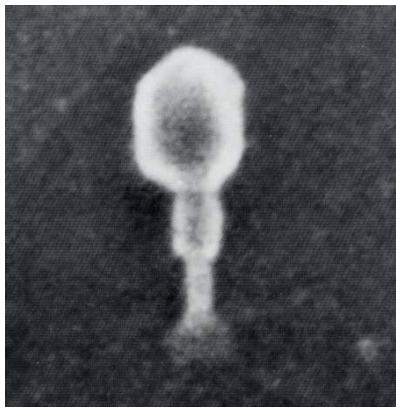
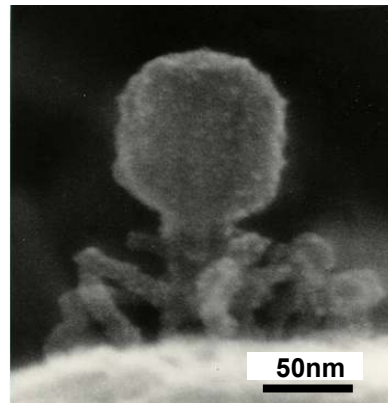




**Hitachi's World First Commercial
FE-SEM, Model HFS-2 (1972)**

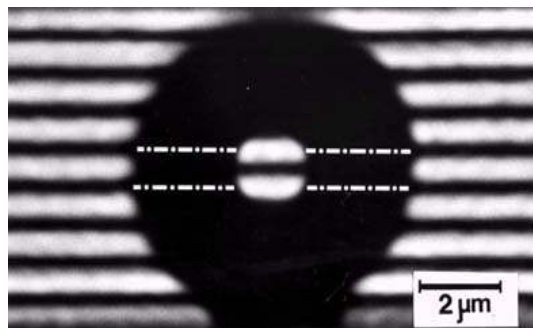


**Photo: Prof. A. V. Crewe
(Univ. of Chicago) (1972),
Equipment: HFS-2 FE-SEM**



**Photo: Prof. K. Tanaka
(Tottori Univ.)(1988)
Equip.: In-lens type FE-SEM**

Observation of T2-bacteriophages



**Experimental Evidence for
Aharonov-Bohm Effect by Electron Holography,
T. Tonomura (Hitachi CRL) (1986)**