



# South Central District Meeting

## April 4-6, 1962

Memphis, Tennessee

Headquarters  
Hotel Peabody

### SCHEDULE OF EVENTS

#### Wednesday—April 4

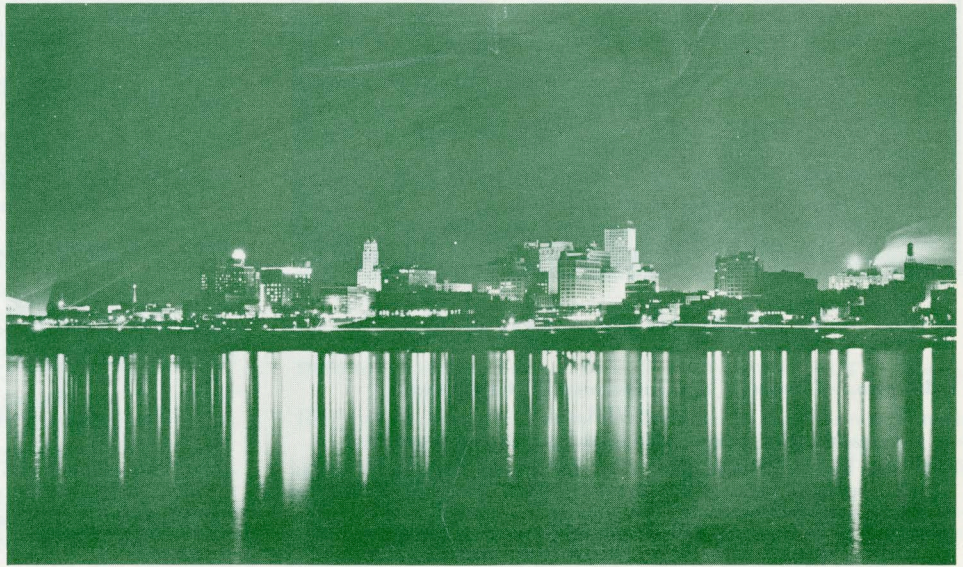
- 8:30 A.M.—Registration
- 9:00 A.M.—Inspection Trip
- 11:45 A.M.—Welcoming Luncheon
- 1:30 P.M.—Technical Sessions
  - Inspection Trip
  - Student Conference
- 2:00 P.M.—Ladies' Mississippi Boat Trip on "Memphis Queen"
- 5:30 P.M.—Social Hour

#### Thursday—April 5

- 8:00 A.M.—Registration
- 9:00 A.M.—Technical Sessions
  - Ladies, "Visit to Holly Springs, Mississippi"
- 10:00 A.M.—Inspection Trip
- 1:30 P.M.—Technical Sessions
  - Inspection Trip
  - Student Conference
- 6:30 P.M.—Refreshment Hour and Dinner Dance

#### Friday—April 6

- 8:30 A.M.—Registration
  - Inspection Trip
- 9:00 A.M.—Technical Sessions
- 10:00 A.M.—Inspection Trip
  - Ladies' Motor Tour of Memphis
- 12:30 P.M.—Ladies' Lunch after Motor Tour
- 1:00 P.M.—Inspection Trip
- 1:30 P.M.—Technical Sessions



Memphis, Tennessee, from across the Mississippi River.

Memphis plays host to the District 13 Meeting. Visitors are always welcome and always enjoy a visit to Memphis, capital city of the mid-south.

The Hotel Peabody will be headquarters for the meeting and it has an ample number of rooms available for delegates and their families. Rates are: Single, \$6.00 to \$14.00; Double, \$8.00 to \$17.00; Twin, \$11.00 to \$18.00; Suites, \$24.00 to \$40.00. \$2.50 for each additional person in a room on roll-a-way bed. Please use the hotel reservation form enclosed with this announcement.

### TECHNICAL PROGRAM

The Technical Sessions are planned to offer something of interest to members of AIEE engaged in all fields of Electrical Engineering. Approximately seventy-five papers will be presented covering the application of electricity in such varied fields as: Transmission, Generation, Electric Heating, Electric Code, Computers, Communications, Medicine, Testing, Missiles, Agriculture and Chemical Industry.

### SOCIAL EVENTS

**"Welcome to Memphis"** Luncheon, Wednesday, April 4, 11:45 A.M. to 1:15 P.M., Venetian Room, Hotel Peabody. This luncheon will officially open the meeting for delegates and their ladies. The Mayor of Memphis will speak a word of welcome, followed by a well known speaker.

**"Hospitality Social,"** Wednesday, April 4, 5:30 P.M. to 7:00 P.M., Venetian Room, Hotel Peabody. This event which is a cocktail hour is to allow the delegates to greet old friends and make new friends. This will be a perfect beginning for an evening "on the town," a chance to see Memphis, enjoy its excellent restaurants and night life.

**"Refreshment Hour and Dinner Dance,"** Thursday, April 5, 6:30 P.M. to 1:00 A.M., Continental Ball Room, Hotel Peabody. Famous Hotel Peabody food, dancing to Bob Morris' Orchestra, Glenn Miller style music. Warm fellowship. Highly recommended to all delegates and their ladies. Awards will be presented to winners of Student Papers competition. Dress informal.

*Continued on page 4*



# SOUTH CENTRAL DISTRICT MEETING

## 1:30 p.m.—Communications

Room 213

*Presiding:* H. I. Downs, Memphis Light, Gas & Water Div.

- DP.\* Statewide Mobile Telephone Plans for Tennessee. E. W. Anderson and W. H. Stults, Southern Bell Tel. and Tel. Co.
- DP.\* New Horizons in Communications. G. R. Winston, Motorola Communications and Electronics, Inc.
- DP62-530. Microwave Use on the Memphis Light, Gas & Water Division System. S. A. Head, Memphis Light, Gas & Water Div.
- DP.\* The Transmission Aspects of Exchange Special Service Circuitry. P. H. Saeger, Jr., Southern Bell Tel. and Tel. Co.

## 1:30 p.m.—Field Testing Electrical Cable and Equipment

Room 214

*Presiding:* D. J. GOODMAN, ARO, Inc.

- DP.\* A-C Tests on Cable Installations in the Field. A. L. Rickley and E. H. Povey, Doble Engineering Co.
- DP.\* Locating Cable Faults by Sound. R. J. McGonegle, ARO, Inc.
- DP62-531. The Value of Overvoltage Tests. A. W. W. Cameron, Ontario Hydro-Electric Power Commission.
- DP62-532. Practical Aspects of Direct Current Testing in the Field on Electrical Cables. R. A. Nelson and P. H. Ware, Simplex Wire and Cable Co.

## 1:30 p.m.—Electrical Applications in the Pulp and Paper Industry

Room 215

*Presiding:* H. B. ELAND, Buckeye Cellulose Corp.

- DP.\* Electrical Productive Maintenance in Pulp and Paper Mills. C. G. Herrington, Buckeye Cellulose Corp.
- DP.\* Modern Regulated Drive Techniques. R. P. Derrick, Westinghouse Electric Corp.
- DP62-534. Modernization of St. Regis Electric Power System. M. Dickhaut, St. Regis Paper Co.
- DP.\* Application of Electrical Insulating Materials to Liquid Filled Transformers. W. H. Mutschler, Jr., Allis-Chalmers Manufacturing Co.

CONTINUED FROM PAGE 1

## LADIES ACTIVITIES

**Mississippi River Boat Trip** on "Memphis Queen", Wednesday, April 4, 2:00 P.M. A most entertaining river boat trip skipped by Captain Tom Meanley, Newspaper Reporter, Author and River Authority. The "Memphis Queen" will land on a river sandbar and guests will be allowed to debark and wiggle their toes in the sand or wade in the "Mighty Mississippi". This is a **must** for all visitors to Memphis.

**Visit to Ante-bellum Homes** in Holly Springs, Mississippi, Thursday, April 5, 9:00 A.M. This is a trip to see four pre-Civil War homes, beautifully restored and maintained. For a real taste of the "Old South" ladies should make this trip. Lunch will be served.

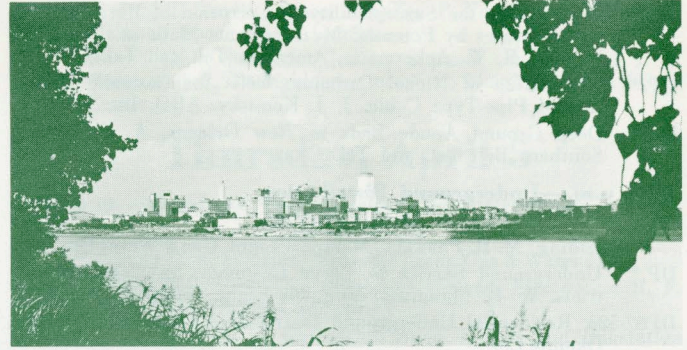
**Motor Tour of Memphis**, Friday, April 6, 10:00 A.M. A 2½ hour tour of Memphis' most interesting historical and civic attractions, followed by luncheon at a famous Polynesian "Luau" restaurant.

**Hospitality Room** at the Peabody Hotel will be open at all times with ladies present.

## INSPECTION TRIPS

**Light and Power Utilities Corporation**, Wednesday, April 4, 1:30 P.M. This will be a visit to a new, modern manufacturing plant at Olive Branch, Mississippi, a short distance from Memphis. New materials, new techniques and new machines are employed in this plant to make both incandescent and fluorescent luminaires for industrial, commercial and residential installations. Visitors always receive a warm welcome.

**Armour Fire and Police Training Center**, Thursday, April 5, 1962, 9:00 A.M. Tour of this facility will include; jail, fire prevention bureau, training division, radio engineers department and a preview of the new two million dollar fire and police alarm system to be completed in 1962. Memphis is known as the "Fire Training Capital of the World" and annually plays host to representatives of fire departments from every state.



Memphis, Tennessee from the Arkansas bank of the Mississippi River.

**Radio Station WREC and Television Station WREC-TV**, Thursday, April 5, 10:00 A.M. Visit to studios and transmitter facilities. This station is as powerful as FCC will license and contains the most modern electronic equipment.

**Buckeye Cellulose Corporation**, Thursday, April 5, 1:30 P.M. This plant is engaged in research, development and the manufacture of cellulose products from cotton linters. A wholly owned subsidiary of Procter and Gamble Company, this plant is an outstanding example of production and safety, having a record of 7,000,000 man hours without an injury.

**Thomas H. Allen Generating Station**, Friday, April 6, 8:30 A.M. This facility contains the world's largest coal unloading tower and equipment, capable of unloading two 1500 ton barges in 1 hour and 40 minutes. Plant is capable of using 550 million gallons of water per day for cooling purposes. Three turbine-generator units, each served by its own cyclone fired boiler, have a nameplate rating of 250 MW each. Aggregate net capability of station is 840 MW.

**University of Tennessee—Medical Units**, Friday, April 6, 10:00 A.M. This tour will cover such areas as the Neuro-Surgical Department where research is being carried on by an electrical engineer. Mr. Art Meyer is working, under a three year grant, designing sensitive measuring equipment to be used while operations are made on the brain during profound hyperthermia, which is "cold body temperature" with a heart lung machine.

**International Harvester Co.**, Friday, April 6, 1:00 p.m. Approximately 30 acres under roof. This plant manufactures cotton pickers, hay balers, rotary cutters, fertilizer distributors, hay conditioners, hay rakes, trailers, forage feeders, disc plows and harrow plows. One of the largest and most modern foundries in the south. Plant uses 600 different kinds of steel.

## REGISTRATION

Your registration card received in the mail should be filled out completely and mailed promptly. This will save time for both you and the Registration Committee. Registration fees are: Members, \$4.00. Non-members, \$7.00; Ladies, \$2.00. Registration fees are not required from Students or members of families. All fees are payable upon arrival for meeting and inspection trips.

## COMMITTEES

**Members of District Meeting Committees are:** Chairman: W. L. Anderson; Vice-Chairman: Y. M. Quinn; Secretary: L. W. Woodard; Budget and Finance: W. L. Wood, Jr.; Publicity: J. Dodd; Technical Program: J. C. Parker; Hotels and Equipment: L. H. Heyman; Registration and Information: R. D. Barrett; Inspection Trips and Transportation: Frank Cassen; Tickets and Printing: J. W. Wesche; Entertainment: W. C. Jordan, Jr.; Student Activities: Brother L. Philip; Ladies Activities: Mrs. W. L. Anderson and Mrs. W. L. Wood, Jr.

**Address inquiries to:** L. W. WOODARD, Secretary, P. O. Box 388, Memphis, Tennessee.

Issued by

AMERICAN INSTITUTE OF ELECTRICAL ENGINEERS  
345 East 47th Street, New York 17, N. Y.

PRINTED IN U.S.A.