



# Fall General Meeting

NOVEMBER 2-6, 1953

Kansas City, Mo.

Headquarters  
Hotel Muehlebach



Kansas City, Missouri

Kansas City was picked for the 1953 Fall General Meeting during the week of November 2 to 6 because it is centrally located and is easily reached from all parts of North America. It will give AIEE members and their wives a chance to attend a national meeting and participate in the affairs of the Institute. The Kansas City Section has plans for taking care of a large attendance and promises a good social and entertainment program to go along with the technical program. Headquarters for the meeting will be the Hotel Muehlebach.

The Fall General Meeting is an outstanding technical meeting of the year where a large variety of papers are presented. Special attention is being given this year to the electrical part of the Petroleum Industry. Other papers will cover subjects in all fields of the Electrical Industry. Of note are three sessions on Computing Devices, two on the Mining Industry, and two on Television and Aural Broadcasting. In the power division two sessions each are also scheduled on Power Generation and System Engineering.

It will be a chance to meet with the national, district and section officers. There will be a meeting of the Board of Directors on Thursday. C. Myron Lytle, vice president of the 7th District, has also called an Executive Committee Meeting for the officers of the South West District.

## GENERAL SESSION

C. G. Roush, Fall General Meeting Chairman, will open the meeting on Monday forenoon. Mayor Wm. E. Kemp will extend a welcome to the convention and Valdemar Peterson, Administrator, Federal Civil Defense Administration will be the principal speaker. President Elgin B. Robertson will talk on the affairs of the AIEE.

## INSPECTION TRIPS

Arrangements have been made for the following trips to industries in Kansas City and vicinity. Every effort has been made to bring out the technical aspects of each trip. In addition, they will afford the members attending an opportunity to see Kansas City.

**Platte Pipe Line Company** has the nation's newest crude oil transportation system. Their 20" pipeline extends from Chatham, Wyoming to Woods River, Illinois, a distance of 1,056 miles. They have 12 pumping stations and 13 valve stations. The operations are controlled from their headquarters in Kansas City with a Microwave communications system which provides a means for dispatching, administration, telemetering, and supervisory control of the pumping stations. A trip through the dispatcher's office and microwave station at the top of the Power and Light Building will be informative and interesting. It will also be a chance to see Kansas City. This trip is scheduled for Wednesday, November 4, and Thursday, November 5 at 2:00 p. m. There will be no charge for transportation.

**Hawthorn Power Plant of Kansas City Power and Light Company** is a new Steam Electric generating station. It has two 66,000 KW and one 99,000 KW units. Another 99,000 KW unit is under construction. The unit system design is fired with pulverized fuel. The voltage is stepped up to 66,000 and 161,000 volts at the plant and transmitted via overhead transmission lines. This trip is scheduled for Wednesday, November 4 and Thursday, November 5 at 2:00 p. m. There will be a charge of \$1.00 for transportation.

**WDAF-TV of the Kansas City Star** has a new building in which all of the programs, studio, commercial, communication, and operating facilities are assembled in one place. Special attention will be given to the electrical equipment and its operation on the inspection trip. The station is rated at 100,000 watts of visual effective radiated power. It operates between 66 and 72 Megacycles on Channel 4. The adjacent tower is 724 feet high. This trip is scheduled for Monday, November 2 at 2:00 p. m. and Tuesday, November 3 at 9:00 a. m. There will be a charge of \$0.75 for transportation.

**Sheffield Steel Corporation**, one of the largest steel companies in the midwest, has many items of interest to engineers. Two of these are the new electric arc furnace and the rod and merchant mill. The electric furnace has 100 ton capacity and is rated at 25,000 KVA requiring



WDAF-TV Building of Kansas City Star

approximately 4 hours of continuous operation to melt down scrap steel ready to tap. This furnace is one of the largest in the midwest and has seen service since August 1952.

The rod and merchant mill is an example of modern automatic steel making. This trip is scheduled for Tuesday, November 3 at 2:00 p. m. and Wednesday, November 4 at 9:00 a. m. There will be a charge of \$1.00 for transportation.

**The B.O.P. Plant of General Motors Corporation** is where Buicks, Oldsmobiles and Pontiacs are assembled and finished on the same line. It is interesting to see how this is done. It is a vast operation to turn out hundreds of cars daily to supply the market in the Southwest. This trip is scheduled for Wednesday, November 4 and Thursday, November 5 at 9:00 a. m. There will be a charge of \$1.00 for transportation.

**Tour of Kansas City**—The Grayline bus will tour Kansas City and cover points of interest. This tour will be available to members and their wives. Two tours are scheduled daily at \$1.00 and \$2.00.

## SOCIAL AND ENTERTAINMENT

Arthur C. Kirkwood, chairman of this committee, promises to provide good entertainment for the evening hours. Preliminary details are as follows:

**Social Hour Sunday evening, November 1**—Early arrivals can get acquainted during this informal gathering for members and their wives.

**Stag Smoker on Tuesday evening**—This Smoker will give the members and guests an opportunity to relax and enjoy themselves. There will be cocktails, buffet dinner and entertainment. The tickets for this function will be \$7.00.

**Chamber of Commerce Luncheon Wednesday noon**—Members of our meeting have been invited to be paying guests at the Chamber of Commerce luncheon. This will promote our professional relations. The tickets for this function will be \$1.70.

**Dinner Dance Wednesday evening**—Members and their wives can enjoy a good dinner, entertainment, and dancing in the magnificent new Grand Ballroom at Hotel Muehlebach. Formal dress will be optional. The tickets for this function will be \$7.00 each.

**Golf**—The golfers will find many fine country clubs in Kansas City and guest tickets will be provided for those wishing to play.

## LADIES PROGRAM

Mrs. Samuel H. Pollock and her committee of 100 ladies have ambitious plans to keep the wives entertained. Members are encouraged to bring their wives since through their wives the engineers will become better acquainted, and everyone will enjoy themselves even more.

**Coffee Hours each morning**—These get acquainted coffee hours will be held on the mezzanine floor at Hotel Muehlebach starting at 10 a.m. each forenoon. All ladies should attend these to arrange for their activities for the day.

## ADVANCED COPIES OF PAPERS

Members may obtain preprints of numbered papers at the uniform price of 30c each (60c each to nonmembers), by sending enclosed order form and remittance to the AIEE Order Department, 33 West 39th Street, New York 18, N. Y. Mail orders (particularly from out-of-town members) are advisable, inasmuch as an adequate supply of each paper at the meeting cannot be assured. Coupon books in \$9 denominations are available for those who wish to avoid remittance by check or otherwise. Numbered papers will be published in the bimonthlies and in the Transactions. *Conference Papers* denoted by CP.\*\* are intended for presentation only, and are not available.

## Monday, November 2

### 10:00 a.m.—General Session

"Address of Welcome", Mayor Wm. E. Kemp.  
"Address", Mr. Valdemar Peterson, Administrator, Federal Civil Defense Administration.  
"Institute Affairs", President Elgin B. Robertson.

### 2:00 p.m.—Switchgear

- 53-404. Life of Silver-Surfaced Contacts on Repetitive Arcing Duty. W. R. Wilson, General Electric Co.
- 53-405. System Recovery Voltage and Short Circuit Duty for High Voltage Circuit Breakers. I. B. Johnson, A. J. Schultz and W. F. Skeats, General Electric Co.
- 53-149. New Line of Low Voltage Air Circuit Breakers. B. S. Beall, III and V. N. Stewart, General Electric Co.
- CP.\*\* Accessories for the Air Systems of Operating Mechanisms for Outdoor Oil Circuit Breakers. W. C. Mitchel and V. L. Tilli, General Electric Co.
- CP.\*\* A Quality Control Program of Increased Scope on Power Circuit Breakers. K. G. Darrow, General Electric Co.

### 2:00 p.m.—Communication Switching Systems

- 53-403. The Diode Matrix as a Component in Relay Switching Circuits. G. L. Bush, Teleregister Labs.
- CP.\*\* Automatic Percussive Welding. A. L. Quinlan, Western Electric Co., Inc.
- 53-407. Automatic Testing of Wired Relay Circuits. A. N. Hanson, Western Electric Co., Inc.
- 53-408. The Type 7 Crossbar Selector. R. W. Hutton, Kellogg Switchboard & Supply Co.

### 2:00 p.m.—Feedback Control Systems

- 53-392. Determination of the Maximum Modulus, or of the Specified Gain, of a Servomechanism by Complex-Variable Differentiation. T. J. Higgins, University of Wisconsin and C. M. Siegel, University of Virginia.
- 53-394. Backlash in Velocity Lag Servomechanism. N. B. Nichols, Raytheon Mfg. Co.
- CP.\*\* A General Theory for the Determination of the Stability of Multiple-Loop Servomechanisms. T. S. Amlie and T. J. Higgins, University of Wisconsin.

- 53-393. Bibliography on Feedback Control Part III. Subcommittees on Bibliography of the Committees on Industrial Control and Feedback Control Systems.

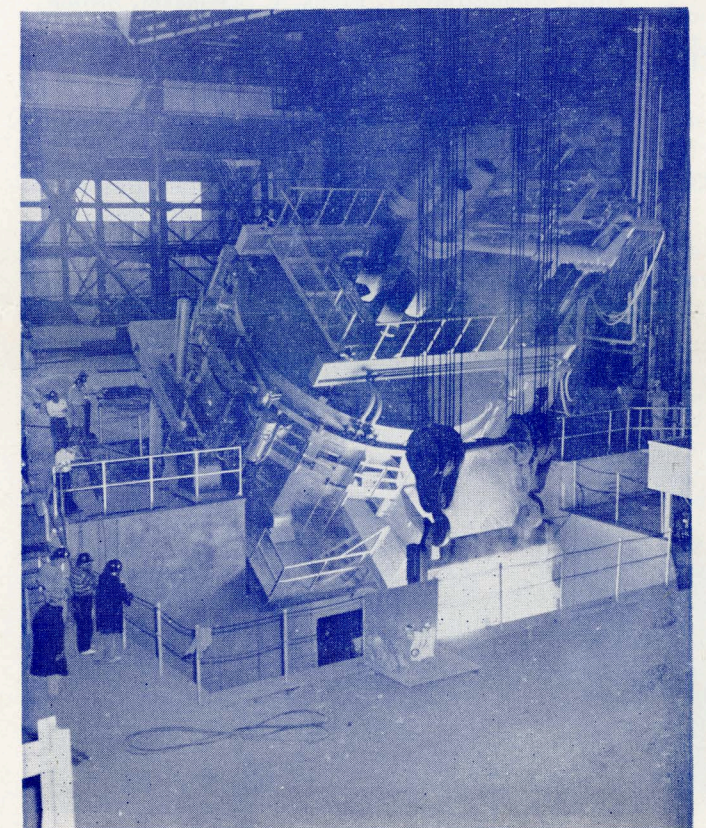
### 2:00 p.m.—Instrumentation for Hospital Isotope Programs

- CP.\*\* I Radiation—Sensitive Instruments (Geiger Tubes and Scintillation Devices). F. E. Hoecker, University of Kansas.
- CP.\*\* II Electronic Counting Instruments. P. N. Wilkinson, University of Kansas.
- CP.\*\* Microabsorption Technics Using Photomultiplier Tubes. G. G. Wiseman, University of Kansas.
- CP.\*\* An Automatic Method of Analyzing the Concentration of Anaesthetic Gases. R. W. Krone, University of Kansas.
- CP.\*\* An Investigation of Metastable Levels in Gaseous Discharge Tubes. Robert McFarland, Kansas State College.

## Tuesday, November 3

### 9:30 a.m.—Safety

- CP.\*\* Electrical Safety in a Large Development Laboratory. G. L. MacLane and G. E. Stoltz, Westinghouse Electric Corp.
- CP.\*\* Safety in the Utilization of Electricity on the Farm. E. H. Smith, Kansas City Power and Light Co.



100 ton 25,000 kva electric arc furnace, Sheffield Steel Corporation

CP.\*\* Precision Switches Used as Interlocks and Limits in Safety Controls. A. L. Riche, Minneapolis-Honeywell Regulator Co.

CP.\*\* Cost Control by Accident Control. C. R. Zeskey, T. H. Mastin Co.

### 9:30 a.m.—Industrial Power Systems

CP.\*\* Natural Gas Plant Power Distribution Systems. C. D. Catt, El Paso Natural Gas Co., and J. K. Howell, Westinghouse Electric Corp.

CP.\*\* Grounded vs. Ungrounded System Operation in Industrial Plants—A Demonstration. R. H. Kaufmann, General Electric Co.

CP.\*\* Distribution Systems in Oil Refineries. T. R. Shaw, Phillips Petroleum Co.

CP.\*\* Power Generation and Distribution in Chemical Industries. R. F. Lawrence and H. B. Thacker, Westinghouse Electric Corp.

### 9:30 a.m.—Petroleum Pipe Lines

CP.\*\* Selection of Motors and Controls for Pipeline Pumping Stations. R. J. Osborn, Sinclair Pipeline Co.

CP.\*\* Automatic and Remote Control of Electric Pipeline Stations. R. S. Cannon, Plantation Pipeline Co.

CP.\*\* Petroleum Microwave Progress 1950-53. E. B. Dunn, Keystone Pipeline Co.

### 2:00 p.m.—Aural and Television Broadcasting

CP.\*\* Design, Principles and Fallacies in the Hi-Fi Field (with demonstration). Frank A. Slaymaker, Stromberg-Carlson Co.

CP.\*\* Development and Practical Operating Considerations of the Conelrad System for Standard Broadcast. A. P. Walker, National Association of Radio & Television Broadcasters.

53-414. Development of Television Service Standards and Application to Design of a Television Broadcast Network. O. W. B. Reed, Jr., Jansky and Bailey, Inc.

CP.\*\* Factors Affecting the Correlation of TV Picture Quality Between Field and Laboratory Signals. B. Amos and C. Quirk, DuMont Corp.

### 2:00 p.m.—Management

CP.\*\* How Should a Manager Spend His Time. P. F. Drucker, Consultant.

CP.\*\* The Implementation of a Management Development Program. L. A. Russ, Westinghouse Electric Corp.

### 2:00 p.m.—Insulated Conductors

53-389. Pipe Line Design for Pipe Type Feeders. R. C. Rifenburg, Consolidated Edison Co. of N. Y., Inc.

53-386. Submarine Cables. Andrew Bodicky, Union Electric Co. of Missouri.

53-390. Power Cable Crossings on Bridges and Viaducts. D. C. Hawley, Kansas City Power and Light Co.

53-391. A Method of Analysis of Annual Variations of Harbor Water and Earth Temperatures. W. N. McDaniel and E. F. Wolf, Consolidated Gas Electric Light and Power Co. of Baltimore.

53-379. Pipe Losses in Non-Magnetic Pipe. L. Meyerhoff, General Cable Corp.

### 2:00 p.m.—Petroleum Refining

CP.\*\* Applications of Outdoor Metal Clad Switchgear. E. R. Hoyle, Sinclair Refinery Co.

CP.\*\* Protection of Large Motors. C. R. Olson, Westinghouse Electric Corp.

CP.\*\* Oil vs. Air Circuit Breakers for Petroleum Refineries. W. B. Wilson and J. Erwin, General Electric Co.

## Wednesday, November 4

### 9:30 a.m.—UHF and Television

CP.\*\* Investigation of UHF Amplifier Operation. W. Y. Pan, RCA Victor Div.

CP.\*\* Review of Development of Color Television. G. H. Brown, RCA Laboratories Div.

CP.\*\* Beat Between Sound Carrier and Color Signal in a TV Receiver. J. E. Allen, General Electric Co.

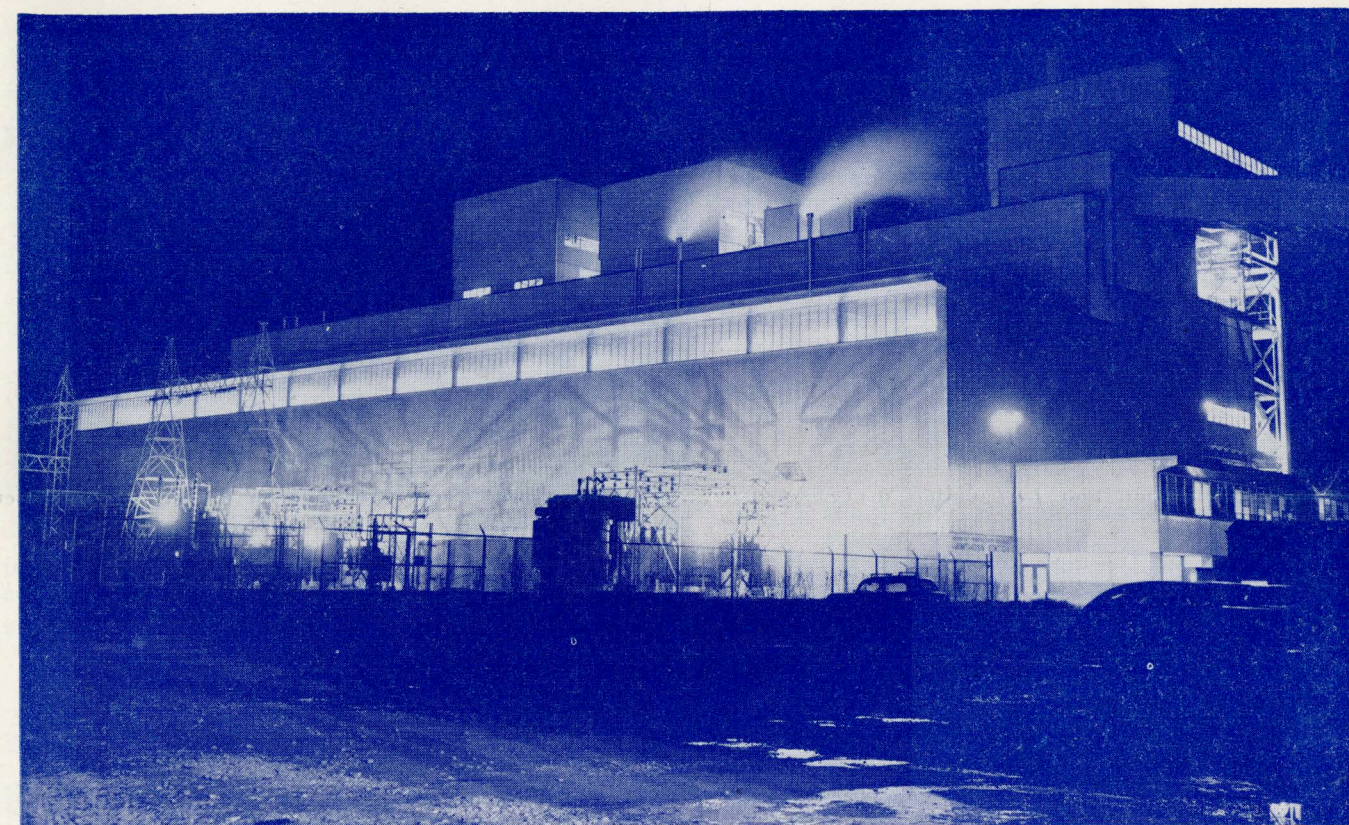
CP.\*\* Unified Signal Coder for Compatible Color System. J. F. Fisher and A. J. Anderson, Philco Corp.

### 9:30 a.m.—Eastern Mining

CP.\*\* Electrical Engineering Aspects of the Electro-carbonization of Coal. E. Sarapuu, Sinclair Coal Co. and P. C. Cross, General Electric Co.

CP.\*\* St. Joseph Lead Company Development at Missouri. W. H. Tucker, St. Joseph Lead Co. and D. E. Cain, General Electric Co.

CP.\*\* Electric Equipment of Electrolytic Zinc and Copper Production. E. C. Clark, General Electric Co.



Kansas City Power and Light Company's new Hawthorn Power Plant

CP.\*\* Protective Devices Underground. A. J. Stoll, I-T-E Circuit Breaker Co.

### 9:30 a.m.—Petroleum Production

CP.\*\* The Economic Aspects of Electric Oil Well Pumping. T. L. Scott, Phillips Petroleum Co.

CP.\*\* Complete Automatic Operation of Oil Field Leases. N. W. Beaudreau, Central Power and Light Co.

CP.\*\* Oil Field Transmission and Distribution Systems. J. R. Ashley, Magnolia Pipe Line Co.

### 2:00 p.m.—Western Mining

CP.\*\* Ore Conveyors at Pend O'Reille Mines & Metal Corp. R. M. Gilbert, Spokane, Washington.

CP.\*\* Arc Furnaces in Mining Industry. G. W. Wright, Canadian General Electric Co.

CP.\*\* A 6000 HP Automatic Mine Hoist Drive. L. W. Fisher and F. C. Dohaney, Canadian General Electric Co.

### 2:00 p.m.—Transmission and Distribution

53-399. Abnormal Voltage Conditions Produced by Open Conductors on Three-Phase Circuits Using Shunt Capacitors. P. E. Hendrickson, I. B. Johnson and N. R. Schultz, General Electric Co.

53-400. Electromagnetic Unbalance of Untransposed Transmission Lines. E. T. B. Gross, Illinois Institute of Technology and M. H. Hesse, General Electric Co.

53-401. Electrostatic Unbalance to Ground of Twin Conductor Lines. E. T. B. Gross and W. J. McNutt, Illinois Institute of Technology.

53-402. Sequence Networks for Faults on Open-Wye Open-Delta Transformer Banks. L. C. Caverley, University of Minnesota and J. V. Sastry, Northern States Power Co.

CP.\*\* Application of Shunt Capacitors to Network Systems. H. Brooks, Westinghouse Electric Corp.

53-415. Bibliography on Power Capacitors 1950-52. Capacitor Subcommittee of the Committee on Transmission and Distribution.

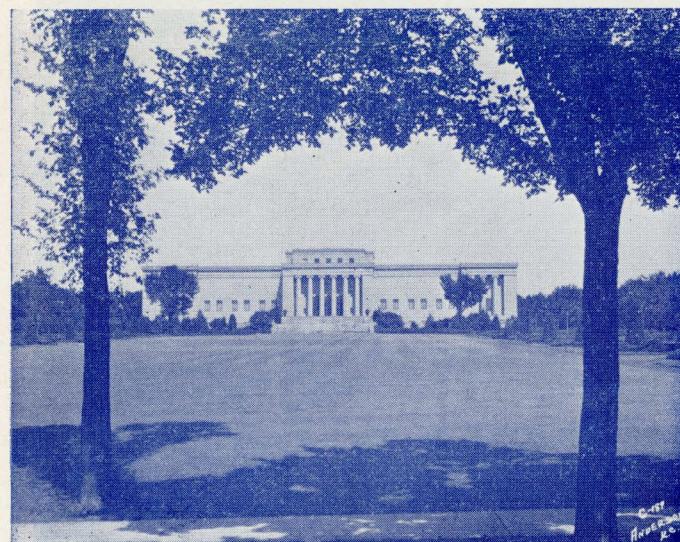
### 2:00 p.m.—Radio Communication Systems

53-384. A Miniature Comandor for General Use in Wire and Radio Communication Systems. F. S. Boxall and R. S. Caruthers, Lenkurt Electric Co., Inc. Represented for discussion.

53-381. Use of Radio and Radar in the Petroleum Industry. W. M. Rust, Jr., Humble Oil and Refining Co.

53-382. Microwave as Applied to Railroad Operation in the Gulf Coast Area. L. R. Thomas, Atchison, Topeka & Santa Fe Railway Co.

CP.\*\* Industry Coordination of Microwave Communications Systems. Victor Nexon, Federal Telephone & Radio Corp.



William Rockhill Nelson Gallery of Art

## AIEE FALL GENERAL MEETING

### 2:00 p.m.—Cathodic Protection

- CP.\*\* The Advantage of Using Zinc or Zinc-Coated Metals Underground to Conserve Cathodic Protection Current. O. C. Mudd, Shell Pipeline Corp.
- 53-413. A Discussion of the Detroit Committee on Electrolysis. R. L. Rayner, Michigan Bell Telephone Co.
- CP.\*\* Magnetic Amplifier Control of Cathodic Protection Equipment. Daniel Werner, American Telephone & Telegraph Co.
- CP.\*\* Practical Aspects of Cathodic Protection Installation. H. W. Hosford, The Harco Corp.

## Thursday, November 5

### 9:30 a.m.—Power Generation

- 53-388. Protection of Turbine-Generators and Boilers by Automatic Tripping. H. A. Bauman, J. M. Driscoll, P. T. Onderdonk and R. L. Webb, Consolidated Edison Co. of N. Y., Inc.
- 53-406. Glenwood No. 3 Outdoor Power Station. E. F. DeTurk and W. J. Burns, Long Island Lighting Co.
- CP.\*\* Electrical Features of Eastlake Generating Station. C. F. Paulus, Cleveland Electric Illuminating Co.



Southwestern Bell Telephone Building and the nearby A T & T Building

CP.\*\* Electrical and Mechanical Features of the Niles Generating Station. C. E. Asbury and J. C. Beres, Commonwealth Associates.

CP.\*\* Maximum Short Circuit and Faulty Synchronizing Torques on Generator Foundations. V. W. Ruskin, Toronto, Canada.

### 9:30 a.m.—Computing Devices

- CP.\*\* Use of High Speed Computing Devices in Photometric Calculations. G. A. Horton, Westinghouse Electric Corp.
- CP.\*\* An Electronic System for Processing Air Traffic Control Information. R. M. Kalb, Engineering Research Associates, Inc.
- 53-409. Nondestructive Sensing of Magnetic Cores. D. A. Buck and W. I. Frank, Massachusetts Institute of Technology. Re-presented for discussion.

CP.\*\* A Sine Function Resistor. K. L. Nielsen, U. S. Naval Ordnance Plant and E. H. Roland, General Motors Corp.

### 9:30 a.m.—Transformers and Protective Devices

- 53-385. Duplex Current Limiting Reactors, Their Application and Forces. L. E. Sauer, Westinghouse Electric Corp.
- CP.\*\* Step by Step Calculation of Transformer Hot Spot Temperature from Daily Load Curves. G. H. Halsey, General Electric Co.
- CP.\*\* Transformer Noise Problem and Its Associated Model Studies. T. D. Gordy, B. Gettys, General Electric Co. and B. M. Carothers, Union Electric Co. of Missouri.
- CP.\*\* A Stray Loss Problem in Transformer Tanks. E. J. Adolphson and F. J. Vogel, Allis-Chalmers Mfg. Co.
- 53-398. Grounding Electrode Characteristics from Model Tests. H. R. Armstrong, Detroit Edison Co.

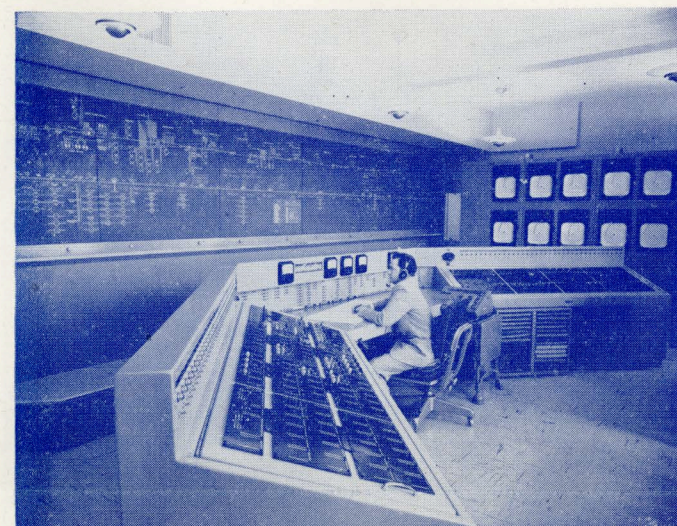
### 2:00 p.m.—Power Generation

- CP.\*\* Steam Generators. G. V. Williamson, Union Electric Co. of Missouri.
- CP.\*\* Turbine Generators—Present and Future. E. H. Krieg, Stone and Webster Engineering Corp.
- CP.\*\* Internal Combustion Engines. L. B. Immele, Burns and McDonnell Engineering Co.
- CP.\*\* Gas Turbine-Generators. C. F. Kottcamp, Gulf Oil Corp.

### 2:00 p.m.—Computing Devices

- CP.\*\* Conversion Problems Incidental to the Use of a Digital Computer to Control Analog Equipment. S. J. O'Neil, AF Cambridge Research Center.
- CP.\*\* Digital Recording of Analog Data. J. C. Hosken, Arthur D. Little, Inc.
- CP.\*\* Synchro-to-Digital Converter. C. D. Cockburn, General Electric Co.

## TECHNICAL PROGRAM



Platte Pipe Line Company's control board

CP.\*\* Design and Performance of a New Electro-Magnetic Analog-Digital Converter. T. A. Feeney, Coleman Engineering Co.

### 2:00 p.m.—System Engineering

- CP.\*\* A Suggested Training Approach to the Incremental Method of Loading Generating Units. R. T. Purdy, Commonwealth Edison Co.
- CP.\*\* Practical Consideration of Transmission Losses in System Operation. T. W. Schroeder, Illinois Power Co.
- 53-396. Pacific Northwest 1952 Power Shortage. J. P. Jolliffe, Bonneville Power Administration.
- 53-380. A System Operator's View of Ice Melting on a Power Line While in Service. O. L. Oehlwein, Public Service Co., Division of Commonwealth Edison Co.
- 53-377. Experience and Reliability of Corner Relaying Channels. AIEE Project Subcommittee #5 of the AIEE Committee on Carrier Current. Re-presented for discussion.

## Friday, November 6

### 9:30 a.m.—System Engineering

- 53-383. Interconnected Systems Energy Accounting Procedure and Related Operating Practices. M. J. Lacopo, American Gas & Electric Service Corp. Re-presented for discussion.
- 53-397. Economy Loading Simplified. J. B. Ward, Purdue University.
- CP.\*\* Switching Methods on a High-Voltage Cable System. E. L. Michelson and C. McNamara, Commonwealth Edison Co.

53-387. Field Excitation in Relation to Machine and System Operation. S. B. Farnham and R. W. Swarthout, General Electric Co.

### 9:30 a.m.—Computing Devices

- CP.\*\* Analog Computer Stability Studies of an Oil Field Pressure Maintenance System. S. J. Jennings and E. C. Clark, General Electric Co.
- 53-410. The Use of Electric Network Analyzers for Pipe Network Analysis. R. E. Stephenson, University of Utah and J. R. Eaton, Purdue University.
- 53-411. An Analysis of an Analogue Solution Applied to the Heat Conduction Problem in a Cartridge Fuse. A. E. Guile, Queen Mary College and E. B. Carne, Remington Rand, Inc.
- 53-412. The Solution of Sturm-Liouville Problems by Direct-Current Network Analyzer. G. W. Swenson, Jr., Washington University. (Presented by R. E. Horn).
- 53-395. Solution of Boundary-Value Problems on Automatic Computing Equipment. F. M. Verzuh, Massachusetts Institute of Technology. Re-presented for discussion.

CP.\*\* Conference paper; no advance copies are available; not intended for publication in Transactions.



Kansas City Power and Light Co. Building

# AIEE FALL GENERAL MEETING

**Kansas City tours each day**—Tours will be arranged each day at the coffee hour to meet the diversified interests of the ladies.

A tour of the City will be made Monday forenoon. Antique shops will be covered Thursday forenoon. A tour will be made through engineers' homes on Friday afternoon to see how engineers live.

Other tours will include shops, Nelson Gallery of Art, Kansas City Art Institute, Plaza shopping district, Hall Brothers gifts, and nationally known factories.

**Fashion Tea at Emery Bird Thayer Store Monday at 3 p.m.**—There will be a luncheon and fashion show at this outstanding store. The tickets for this function will be \$1.00.

**Cards and Entertainment Tuesday evening**—The ladies will meet at 8:30 p.m. in the Trianon Room of the Hotel Muehlebach for cards, then be entertained by Mrs. A. C. Kirkwood who will give a reading of a current Broadway hit. There will be no charge for this function.

**Bridge Luncheon at Blue Hills Country Club Tuesday noon**—This party at a beautiful country club is expected to be a highlight of the ladies' activities. They will play bridge, canasta, and pinochle for some very attractive prizes. The tickets for this function will be \$2.50.

**Kansas City Museum Tour and Show Thursday afternoon**—After a tour of the museum, a show will be staged in the costume wing entitled "Femininity of Yesterday." The tickets for this function will be \$1.00.

## HOTELS AND REGISTRATION

The Hotel Muehlebach, headquarters for the meeting, is located in the heart of the downtown area. Please address Miss Mary Nugent, Kansas City Chamber of Commerce, 1030 Baltimore, Kansas City, Missouri for your hotel reservations. There are a number of fine hotels within a few blocks of the Hotel Muehlebach and you will be placed according to the accommodations that are available at prevailing rates.

Advance registration cards should also be sent in so the committee will have an idea on how many to plan for. Also check off what you expect to attend. Registration fees are \$3.00 for members and \$5.00 for non-members. There will be no registration fee for enrolled students and families of members.

## KANSAS CITY

Kansas City should be very pretty during Indian Summer with its colored trees along its boulevards which wind through its parks and residential areas. The Plaza and Country Club District is an example of City planning. The population with adjacent cities and suburbs is 834,000 and growing rapidly.

It is a center of wholesale and retail trade, transportation, power, communication and rapidly expanding industries. It is an important market and distribution center for



Hotel Muehlebach

food, grain, livestock, and all equipment required by surrounding area. It has many nationally known factories.

There are historical places to see that tie in with the history of the country. It is a cultural and entertainment center.

You will enjoy your trip to Kansas City November 2 to 6 and find it a good host for the Fall General Meeting.

## FALL GENERAL MEETING COMMITTEE

The members of the General Committee for the 1953 Fall General Meeting are C. G. Roush, Chairman; Riley Woodson, Vice Chairman; S. H. Pollock, Secretary-Treasurer; C. M. Lytle, Vice President, District #7; J. C. Bibbs, J. E. Barfield, O. H. Johnson, C. M. Haynes, Members-at-Large. The Sub-committee chairmen are J. P. Kesler, Registration and Hotel; William Carter, Reception; L. M. Schindel, Technical Program; R. L. Baldwin, Finance; A. C. Kirkwood, Entertainment; H. E. James, Inspection Trips; M. J. Horney, Publicity; L. L. Davis, Transportation; O. L. Starcke, Printing; W. P. Smith, Students; Mrs. S. H. Pollock, Ladies.

Issued by

AMERICAN INSTITUTE OF ELECTRICAL ENGINEERS

33 West 39th Street, New York 18, N. Y.

PRINTED IN U.S.A.