

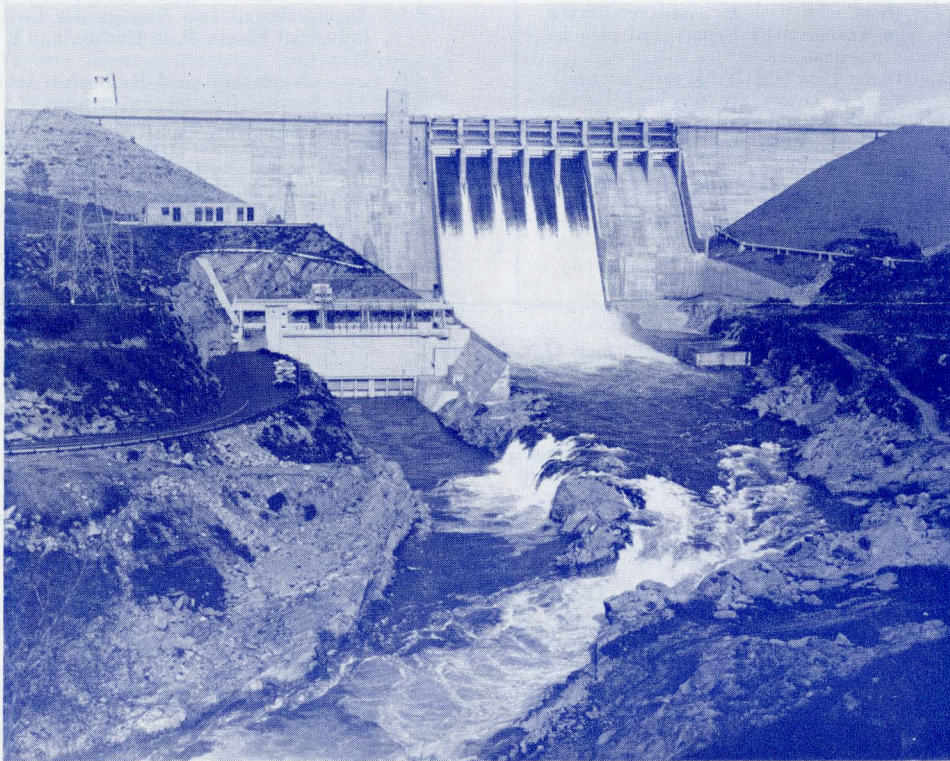


PACIFIC GENERAL MEETING

August 19-22, 1958

Sacramento, California

Headquarters:
Hotel Senator



Folsom Dam and Generating Facilities in the Sierra Madres

The AIEE 1958 Pacific General Meeting to be held in Sacramento, California, August 19-22, will offer a program and activities that will appeal to all interests. Headquarters for this meeting are at the Hotel Senator. A rich and interesting technical program is assured. Six inspection trips of both general and technical interest including one to the world's largest rocket plant, will complete the program. Excellent, diversified entertainment is planned for the ladies, and special activities for students will round out the schedule. Arrangements have been made to accommodate the youth and small children of parents wishing to attend.

Historic Sacramento, capital of California, serves as a gateway to nearby points of interest—San Francisco, Lake Tahoe, Yosemite National Park, and Reno. The geographic and climatic advantages of Sacramento combined with other outstanding tourist attractions in Northern California offer an excellent opportunity to combine a business trip to the Meeting with a family vacation.

GENERAL SESSION

Beginning in the Empire Room of the Hotel Senator, Tuesday morning at 10 a.m., members will be addressed by President L. F. Hickernell. Featured speaker will be Mr. C. C. Whelchel, Chief Mechanical Engineer, who will discuss "Future Thermo-Electric Power Plants on the System of the Pacific Gas and Electric Company."

Mr. Harvey O. Banks, Director, California Department of Water Resources, will discuss "Power In The California Water Plan."

SOCIAL ACTIVITIES

Relaxed informality and fun are to be featured in the entertainment program. Early arrivals and their wives will be welcomed at an informal "Get-Acquainted" gathering in the Gold Room of Hotel Senator, on Monday evening, from 7 to 10 p.m. The Gold Room is conveniently close to the registration center, and all are invited to drop in to "get acquainted" and enjoy some informal entertainment and light refreshments.

Tuesday morning a Coffee Hour from 8:30 to 9:45 a.m. in the Gold Room of Hotel Senator will precede the opening general session. Men, women, and students are invited. Tuesday evening, an exciting

Wine Tasting Festival is planned from 6 to 8 p.m. in the Empire Room of Hotel Senator. There will be no charge for this event which will offer generous samples of a wide variety of world-famous California wines.

A limited number of Wednesday night tickets, which will be sold at \$2.40 on a first-come, first-served basis, have been reserved at the Music Circus for the smash stage production, "The Most Happy Fella." Produced by the outstanding Lewis and Young Theatrical Company and held outdoors under a gala circus tent, this novel theatre-in-the-round musical will fascinate both men and ladies.

A Thursday luncheon featuring an outstanding speaker will be held for men and their ladies at 12:15 p.m. in the Mirror Room of the Elks Club. William H. Pickering, director of the Jet Propulsion Laboratory, California Institute of Technology, will speak on the subject "An Electrical Engineer Looks at the Space Age." Tickets will be priced at \$2.00 each. Climaxing the entertainment program an authentic Hawaiian Luau will take place at the Newman Club, Thursday evening. A complimentary cocktail hour will be from 7 to 8 p.m. The luau will be served by "Hula Girls and Beach Boys" from 8 to 9 p.m. to the accompaniment of native Hawaiian music and entertainment. Dancing to the American music of Clyde Mitchell will follow until midnight. Charge for the evening will be \$6.00 per person.

REGISTRATION

The registration desk will be located in the entrance lobby of Hotel Senator. Facilities for registering will be available Monday evening from 7 to 10 p.m. beginning again at 8 a.m. Tuesday and continuing daily throughout the meeting.

For convenience, members and non-members should return the advance registration card sent with their mailed announcement. Registration fees payable at the Meeting are \$5 for members and \$8 for non-members. Wives, children and students will not be charged a fee.

LADIES' ACTIVITIES

The ladies attending the Meeting are sure to enjoy the interesting and fun-packed program planned for them. In addition to the social
Continued on page 3

AIEE PACIFIC GENERAL MEETING — PROGRAM — Sacramento, California, August 19-22, 1958

ADVANCED COPIES OF PAPERS

Members may obtain preprints of numbered papers at the uniform price of 40¢ each (80¢ each to nonmembers), by sending enclosed order form and remittance to the AIEE Order Department, 33 West 39th Street, New York 18, N. Y. Mail orders (particularly from out-of-town members) are advisable, inasmuch as an adequate supply of each paper at the meeting cannot be assured. Coupon books in \$10 denominations are available for those who wish to avoid remittance by check or otherwise. The Transactions Papers will also be published in the bimonthly publications.

Note: Unnumbered Conference Papers (CP.*) may be available at or after the meeting, if copies are provided by the author. They are not intended for publication in the Transactions and are not presently scheduled for reproduction in any form by the Institute.

Note: The TRANSACTIONS papers will be printed in the bimonthly publications as follows:

- I COMMUNICATION AND ELECTRONICS.
- II APPLICATIONS AND INDUSTRY.
- III POWER APPARATUS AND SYSTEMS.

Tuesday, August 19

10:00 a.m.—General Session

2:00 p.m.—Relays and Rotating Machinery

58-1018. Protection of Three Phase Motors Against Single Phase III. Operation. L. L. Gleason, City of Seattle Lighting Dept. and W. A. Elmore, Westinghouse Electric Corp.

58-1019. Drainage Reactor Protection of Pilot Wire Circuits. J. G. Hendrickson and A. R. Caprez, City of Tacoma Dept. of Public Utilities.

58-1020. Contribution to the Theory of Commutation on D-C Machines. R. Holm, Stackpole Carbon Co.

2:00 p.m.—Computing Devices

58-1003. Direct System Synthesis by Means of Computers. A. B. Clymer, North American Aviation, Inc.

CP.* Servo Controlled Magnetic Tape Delay Line. L. J. Kamm, Convair.

CP.* Logic for Magnetic Tape Delay Line. D. N. Hale, Convair.

CP58-1025. Matrix Synthesis of High Speed Logic. E. J. Schubert, Burroughs Corp.

CP.* The Logical Design of a Serial General Purpose Computer with Micro Programming Capabilities. R. I. Tanaka, Lockheed Aircraft Corp.

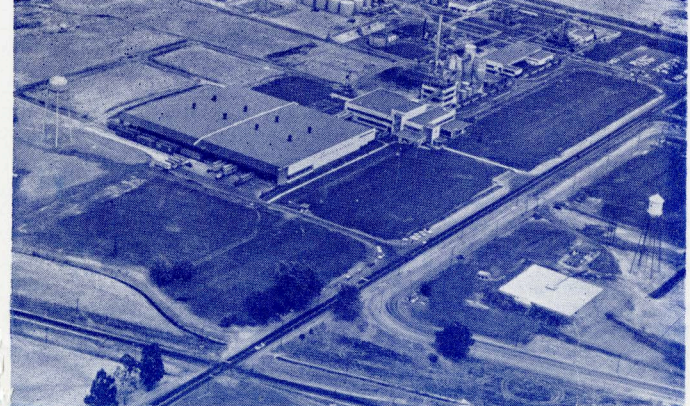
2:00 p.m.—Power Generation

58-769. Performance of Generator Thrust Bearings at Hoover Power Plant. F. B. Looper, City of Los Angeles Dept. of Water and Power.

58-1024. Electrical Requirements of Reversible Pumped-Storage Units. III. H. H. Roth, Allis-Chalmers Mfg. Co.

CP.* The Impact of Atomic Energy on Water Resources Development. F. J. Groat, California Department of Water Resources.

CP.* Motor-Driven vs. Shaft-Driven Exciter Tests. S. H. Gold, C. K. Grant, and J. H. Zornes, California Electric Power Co.



United Aerial Service

Sacramento Synthetic Detergent Plant, Procter and Gamble

Wednesday, August 20

9:00 a.m.—Industrial Power Systems

CP.* Power Distribution in Agglomerating Plants. J. E. Barkle and T. W. Soden, Bechtel Corp.

CP.* Industrial Power System Design at 480 Volts. C. L. Phillips, General Electric Co.

CP.* Performance Testing of Emergency Power Supplies for a Nuclear Reactor. W. R. Moon, General Electric Co.

CP.* Application of Low Voltage Air Circuit Breakers to Modern Industrial Plants. R. I. Carlson and I. C. Fisk, Allis-Chalmers Mfg. Co.

9:00 a.m.—Nucleonic and Radiation Instrumentation

CP.* The Sodium Reactor Experiment. J. E. Owens, Atomic International.

CP58-706. Instrumentation for a Boiling Water Reactor. L. Kornblith, Jr., General Electric Co.

CP.* Analytical Methods for Determining Control Requirements for Nuclear Power Plants. E. B. Ash and J. G. Lundholm, Jr., Atomic International.

CP.* Data Handling Systems for Nuclear Power Plant. T. R. Hudson, Daystrom Systems.

9:00 a.m.—Domestic and Commercial Applications

58-1006. Tramp-Iron Remover for a Field Forage Harvester. F. C. II. Jacob and J. B. Dobie, Univ. of Calif.

CP.* Electrical Design for Fire Safety in Hospital Operating Rooms. R. E. Carlson, State Fire Marshall Office.

58-1007. Artificial Cooling of Livestock in Hot Climates. C. F. Kelly, II. Univ. of Calif., T. E. Bond, U.S. Dept. of Agriculture, and N. R. Ittner, deceased.

CP58-1000. Reversible Electrical Distillation by Use of Transthermer. R. C. Schlichtig, Seattle, Wash.

58-1010. Earth Source Heat Pumps, Characteristics, Design and Operation. E. A. Freund and G. S. Whitlow, Union Electric Co. of Missouri. (Re-presented for Discussion Only.)

2:00 p.m.—Industrial Power Systems

CP58-1015. An Experience Report on the Use of Aluminum Wire and Cable in Industrial Plants. H. Esch, Kaiser Aluminum & Chemical Corp.

CP.* Portable Power Supply for Movie Studio Service. P. Belsky, Westinghouse Electric Corp. and G. Feldcamp, Walt Disney Productions.

CP.* Power Systems for Emergency Lighting. A. B. Smedley, Pasadena, Calif.

2:00 p.m.—Insulated Conductors

CP58-1016. History and Development of Residential Underground Distribution in Southern California. R. C. Blankenburg, Southern California Edison Co.

CP58-1017. Heat Run Testing of Pipe-Type Cable. C. M. Buck and F. B. Schullerts, Pacific Gas & Electric Co.

2:00 p.m.—Space Heating

CP58-1001. Solar House Heating. W. A. Danielson, Brig. Gen. U.S.A., Ret., Memphis, Tenn.

CP58-1011. Boolean Algebra Applied to Heat Pump Design. H. P. Gluckman, Los Angeles Dept. of Water and Power, and G. J. Friedman, Servomechanisms, Inc.

58-1012. Residential Heating—Electric vs. Gas or Oil. G. S. Smith, II. Univ. of Wash.

CP58-1013. Centrifugal Heat Pump System for Service Center. J. A. Wright, The Washington Water Power Co.

58-1014. Motor-operated Switch for Space Heating Control. J. C. II. Beckett, Wesix Elec. Heater Co. (Re-presented for Discussion Only.)

Thursday, August 21

9:00 a.m.—Feedback Control Systems

58-1002. A Phase Plane Approach To Relay Sampled-Data Feedback II. Systems. F. J. Mullin & E. I. Jury, Univ. of Calif.

CP58-1026. Relay Type Feedback Control Systems With Dead Time And Sampling. K. Izawa, Purdue Univ. & L. E. Weaver, Univ. of Arizona.

CP.* Least Squares Design of Multi Variable Control Systems. R. C. Amara, Stanford Univ.

9:00 a.m.—Management Research and System Engineering

58-1030. Economic Selection of Generating Capacity Additions. T. W. Schroeder and G. P. Wilson, Illinois Power Co.

CP58-1031. Managing Research Laboratories. T. M. Linville, General Electric Co.

9:00 a.m.—Radio Communication Systems

58-181. A 6000-MC Radio System for Toll Telephone Service. M. H. I. Kebby & A. F. Culbertson. Lenkurt Electric Co. (Re-presented for Discussion Only.)

CP.* Expansion of Pacific Coast Microwave Network. R. G. Kuck, Pacific Tel. & Tel. Co.

CP.* A New Flexible Radio System For Traffic Light Control. C. Willyard, Motorola, Inc.

CP.* Put the Tip of Your Finger To Work. H. H. Davids, General Electric Co.

CP.* Atmospheric Influences on 36 Kilomegacycle Propagation. W. Flock, National Bureau of Standards & Univ. of California.

2:00 p.m.—Feedback Control Systems

58-1027. Complex-Zero Signal Generator For Rapid System Testing, II. G. G. Lendaris & O. J. M. Smith, Univ. of Calif.

58-1028. Servo Motor Theory: Effect of Planning Source Impedance II. On Motor Performance. A. Diamond, Helipot Corp.

CP58-89. Application of Switching Transistors and Saturable Reactors In A High-Performance Servo. F. B. Cox, Jr. & P. R. Johannessen, Massachusetts Inst. of Technology. (Re-presented for Discussion Only.)

2:00 p.m.—Wire Communication Systems

CP.* The Underwater Voiceway to Hawaii. J. W. Dunbar, American Telephone and Telegraph Co.

CP.* Field Experience with the B-510 Type Carrier System. W. E. Noller, Lynch Carrier Systems, Inc.

58-1004. Type OJ Carrier Telephone System. J. A. Coy, ret. Bell Telephone Laboratories, Inc., E. S. Kelsey and B. T. Nicholls, Northern Electric Co. Ltd.

58-1005. The "ON/K" Carrier System. G. T. Masters, Pacific Telephone and Telegraph Co.

Friday, August 22

9:00 a.m.—Substations

58-1008. Zig-Zag Configuration in High Voltage Ring-Bus Substation. III. R. N. Connelly, Sacramento Municipal Utility District and R. F. Gibbons, Federal Pacific Electric Co.

58-1021. The Application of Supervisory Control on the Bonneville III. System. J. R. Boston and K. E. Shank, Bonneville Power Administration.

CP58-1022. Report on West Coast Practices for Transil Oil Handling in Substations. AIEE Working Group on Project 56.2, J. L. Buckley, Chairman.

58-22. The Insulator Contamination Problem as Influenced by Silicone Surface Coatings. J. E. Conner, Southern California Edison Co., and A. D. Lantz, Jr., The Ohio Brass Co. (Re-presented for Discussion Only.)

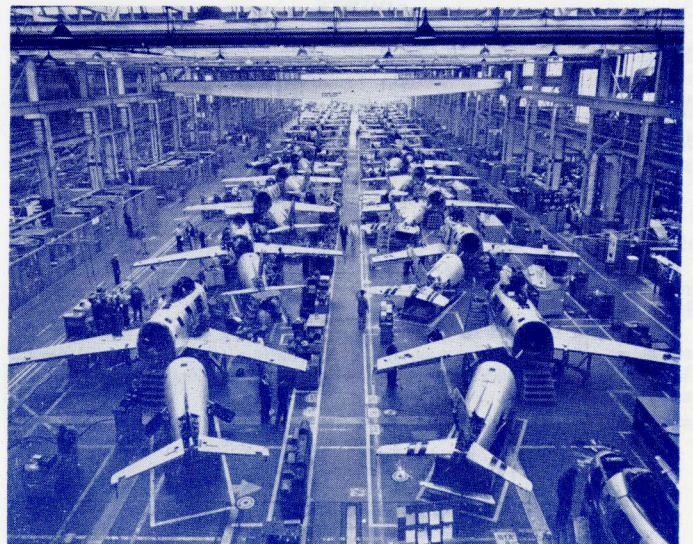
9:00 a.m.—Transmission and Distribution

58-1023. Nodal Representation of Large Complex-Element Networks III. Including Mutual Reactances. J. C. Siegel and G. W. Bills, North American Aviation, Inc.

58-360. The Magnetic Properties of ACSR Core Wire. L. W. Matsch, III. Univ. of Arizona, and W. A. Lewis, Illinois Institute of Technology.

CP58-1009. Graphical Analysis of Aerial Cable Current Characteristics. E. Hazan, Kaiser Aluminum & Chemical Corp.

58-1029. The Resistance and Reactance of Aluminum Conductors, III. Steel Reinforced. W. A. Lewis, Illinois Inst. of Technology & P. D. Tuttle, Alcoa Research Laboratories.



McClellan Air Force Repair Base USAF Photo

activities for both men and women listed above, the following events have been especially prepared for the ladies. A "Coffee Hour" will be held Wednesday and Thursday mornings at 9 a.m. in Room 240 of Hotel Senator. Room 340 will serve as "Hospitality Headquarters" each morning and other posted times for those who wish to play cards or relax and chat with others.

Tuesday will offer a tour of the California Crocker's Mansion, followed by an afternoon "Tea" at the famous Crocker Art Gallery. Buses will leave at 1 p.m. from Hotel Senator. Cost—\$1.00 per ticket.

A 12:30 p.m. Wednesday luncheon will be held at the fashionable Sacramento Inn. Featured will be a fascinating talk by Mrs. Joyce Peters, an unusually competent and charming lady engineer. An interesting discussion of the aims and objectives of the Sacramento AIEE Wives' Club will follow. Tickets will be priced at \$2.00.

On Thursday the ladies are invited to join the men for a trip to the Tide and Oxydol Plant of the Procter and Gamble Company. Women will be escorted on an especially arranged visit of the plant. Transportation cost for the bus which leaves Hotel Senator at 2 p.m. will be \$1.00 per person.

Friday will feature a Brunch with swimming and bridge. A nominal charge of \$2.00 will be made for this event which begins at 10 a.m. at the El Mirador Hotel.

INSPECTION TRIPS

An outstanding program of inspection trips of both technical and general interest has been arranged. Interested persons are urged to make arrangements at the inspection-trips desk immediately after registration. All trips are scheduled for half day only and the return to headquarters will be in time for succeeding events. Men will be more comfortable on the trips if they plan on wearing sport shirts. Special chartered buses have been secured for the trips. Those attending must ride these busses to gain admission to the facilities to be inspected.

Aerojet-General Corporation (Bus leaves Hotel Senator, Tuesday, 1:30 p.m., August 19). Located just a few miles from Sacramento, this company is believed to be the largest rocket production facility in the world. Producers of equipment for the VANGUARD, POLARIS, BOMARC, and REGULUS missiles, this plant covering 20,000 acres and employing 7,000 people will provide a most unusual tour. Ticket—\$2.00.

McClellan Air Force Base (Bus leaves Hotel Senator, Wednesday, 8:30 a.m., August 20). Largest of the West Coast Air Material centers, this Air Base warehouses, maintains, and supplies Air Force equipment for the Western Continental and Pacific areas. Vital in time of war, McClellan serves now as a major bulwark of our nation's West Coast defenses.

Seen on this trip will be the Air Force's world-wide communications center and the jet overhaul, maintenance, and modification shops. Planes that normally can be seen on the flight line will include the F86, F100, F104, B47, and the large RC121. Ticket—\$1.50.

Elverta and Hedge Substations (Bus leaves Hotel Senator Wednesday, 1:30 p.m., August 20). Elverta Substation is a principal receiving substation of the Sacramento Municipal Utility District at which power is taken from the U.S. Bureau of Reclamation at 230 kv. Two 185,000 kva 3-phase 4-winding double autotransformers supply both 115 kv and 69 kv station buses. Four 12.5 mvar switched capacitor banks are connected to the 69 kv station buses. These banks are owned and operated by the USBR for transmission voltage control.

Hedge Substation is now under construction and most of the physical plant will be in place by the time of this trip. This station will receive power from the Pacific Gas & Electric Company and SMUD's Upper American River Hydro Project at 230 kv. Both the 230 kv and 115 kv buses are of the ring type. The initial installation includes one 230/120 kv, 120,000 kva 3-phase and one 230/76 kv, 160,000 kva 3-phase transformer. The approach used in the design of the steel structures is quite unique and interesting because it forms a zigzag pattern. Ticket—\$2.00.

United States Army Signal Depot (Bus leaves Hotel Senator, Thursday, 8:30 a.m., August 21). The mission of the Sacramento Signal Depot is to acquire, store, repair, and issue the many thousands of pieces of equipment used in communications by the U.S. Army. Equipment seen during the tour may range in size from a huge mobile radar set weighing many tons to a small transistor, only fractions of an inch in length.

The Sacramento Signal Depot acts as a distributor, stocking items for Alaskan ports, the Far East Command, and may ship to any part of the world.

The Maintenance Division repairs all types of Signal equipment and maintains special shops for Radar, Electronics, Avionics, Nucle-

onics, Communication, Television, Teletype, Meteorological and Radiological equipments.

An unusually interesting feature seen on the trip will be the modern crystal grinding and fabrication shops. In this operation crystals used in various communication equipments are shaped and ground with great precision. Ticket—\$1.00.

Procter and Gamble Plant (Bus leaves Elks Club, Thursday, 2 p.m., August 21). This newest Procter & Gamble plant manufacturing synthetic detergents and processing the raw materials used in them is located a short 20-minute bus ride from Meeting headquarters. In the process area tank car quantities of coconut oil are daily processed for shipment to all P&G plants in the United States making detergent granules, bars, and liquids. The synthetic detergent plant is an integrated operation continuously converting liquid and solid chemicals into the familiar granules for home use.

Numerous automatic controls, both pneumatic and electronic, are used to control the chemical processes. The packing unit which will be seen on the tour has the latest in automatic packaging machinery and materials handling equipment. The 106,000-square-foot warehouse has the most modern pallet-less unit-load equipment for handling local production plus the full line of company products which are distributed to Northern California, the Pacific Northwest, and overseas. Steam for process use is supplied by two 60,000 lbs. per hour boilers in a modern outdoor installation. The 12 kv distribution system to unit substations will be shown as part of the tour. Ticket—\$1.00.

Folsom Dam and Powerhouse—Old and New (Bus leaves Hotel Senator Friday, 8:30 a.m., August 22). Visited during this tour will be the recently constructed Folsom Dam and generating facilities. The dam completed in 1956 by the U. S. Corps of Engineers impounds 1,000,000 acre-feet of water. The power plant at the foot of the dam which houses three generators of 54,000 kw each, was installed and is operated by the U.S. Bureau of Reclamation.

These generators supply electricity to the Central Valley Project whose 230 kv transmission lines traverse Northern and Central California. The generators, the step-up substation and switchyards, and a water pumping plant will be included as part of the trip.

A significant highlight of the tour will be attendance at a brief ceremony dedicating the original Folsom Powerhouse as a California Historical Landmark. Originally set in operation in 1895, Folsom was one of the first commercial hydro powerhouses to deliver power at a high voltage to a distant city. In its heyday 3,000 kw. generated at 800 volts, was transmitted at 11 kv for the unheard of distance of 22 miles to Sacramento. The plant was operated continuously until 1952 when construction of the new dam forced it to shutdown. The old plant will be open for a brief inspection after the dedication ceremony. Ticket—\$2.50.

HOTEL RESERVATIONS

Rooms have been set aside at Hotel Senator (Meeting Headquarters), two other downtown hotels, and three outlying motor hotels for members and guests attending the Meeting. Since summer tourist traffic is heavy in Sacramento, those who plan to attend the Meeting should submit their requests for room reservations immediately. Any rooms not spoken for by August 12 will be released for use by the general public. Rooms should be requested directly from the hotels, and the hotels will reply directly to the applicants. The room requests should mention specifically the American Institute of Electrical Engineers.

The daily rates for rooms with private bath at the various hotels are:

Hotel Senator		Sacramento
	12th and L Streets (Meeting Headquarters)	
Single		\$ 7.00- 9.00
Double—two people, one bed		9.50- 12.00
Twin—two people, two beds		10.00- 15.00
Suite		25.00- 45.00
El Mirador Hotel		Sacramento
	13th and N Streets (3 blocks from Meeting Headquarters)	
Single		7.00- 14.00
Double—two people, one bed		9.00- 16.00
Twin—two people, two beds		10.00- 16.00
Suite		24.00- 30.00
Californian Hotel		Sacramento
	800 I Street (7 blocks from Meeting Headquarters)	
Single		5.50- 6.00
Double—two people, one bed		7.00- 7.50
Twin—two people, two beds		8.00- 9.00

Capitol Inn Motel		West Sacramento
	1130 West Capitol Avenue (One mile west of Meeting Headquarters)	
Double—two people, one bed		9.00- 10.00
Twin—two people, two beds		10.00- 12.00

El Rancho Motor Hotel		West Sacramento
	1029 West Capitol Avenue (One mile west of Meeting Headquarters)	
Single		6.50- 8.50
Double—two people, one bed		7.50- 10.50
Twin—two people, two beds		8.50- 12.50
Suite		20.00- 25.00

El Dorado Motor Hotel		North Sacramento
	877 Canterbury Road (Three miles east of Meeting Headquarters)	
Single		7.50- 9.50
Double—two people, one bed		11.00- 12.00
Twin—two people, two beds		11.00- 12.00
Suite		18.00- 24.00

HAWAII POST-MEETING TOUR

An especially planned eight-day Post-Meeting Tour to fabulous Hawaii has been arranged. Honolulu-bound members may fly from Sacramento at 9 a.m., August 23 and arrive in the Islands at 4:30 p.m.—with plenty of time for an evening swim at beautiful Waikiki.

On Monday, August 25, the Hawaii Section of AIEE will sponsor a one-day program consisting of a general get-together session followed by luncheon, inspection trips and an evening social event for both ladies and gentlemen.

Except for the nominal charges for the inspection trips and the AIEE sponsored social events, the remainder of the stay and the air transportation will be included in the all-expense tour which is being quoted at \$345 per person.

Those interested in this special feature are urged to write at once for complete detailed information to R. N. Keen, c/o General Electric Co., Forum Building, Sacramento. It is important that final arrangements and reservations be made not later than August 9.

STUDENT ACTIVITIES

In addition to other Meeting activities a special students' and counselors' luncheon is planned for Wednesday noon in Room 240 of Hotel Senator. Dr. R. D. Bennett, Manager of General Electric's Vallecitos Atomic Laboratory, will address the group. A short period will be allowed after the meeting for discussions of mutual interest. There will be no charge to students or counselors for the luncheon.

Inspection Trip tickets may be purchased by students in attendance at the Meeting for the low price of 50 cents for each trip.

TRANSPORTATION

United Air Lines and Pacific Air Lines have several flights each day from all directions to and from Sacramento.

The Southern Pacific Company and the Western Pacific, with interconnections with major rail lines, serve Sacramento directly. Trips on the Santa Fe which stop at Stockton, California, 45 miles to the south, can be continued by bus, rail, or airline to Sacramento.

Sacramento lies at the crossroads of two major transcontinental highways, U.S. 40 and U.S. 50, and the major Pacific Coast inland route U.S. 99.

SPORTS

A Golf Tournament is scheduled for Thursday afternoon at the Haggin Oaks Golf Course. This is truly one of the most beautiful courses in Northern California. Trophies will be awarded for low gross and low net scores, and there will be special prizes for the "Duffer" class. Lunch will be served at the Club House as the first foursome will tee off promptly at 1 p.m. Green fees will be \$3.50 per person.

GENERAL INFORMATION

Weather in Sacramento in August is quite warm throughout the day but requires a light wrap for evenings.

General information may be obtained at the registration desk. Mail may be addressed c/o Hotel Senator and should be claimed at the hotel desk.

A bulletin board will be provided for posting notices and special messages. Provisions may be made for baby sitting and child care. Various forms of recreation are available for children and youth of all ages.

Issued by

AMERICAN INSTITUTE OF ELECTRICAL ENGINEERS

33 West 39th Street, New York 18, N. Y.

Printed in U.S.A.