



NATIONAL POWER Conference

SEPTEMBER 24-27, 1961



ST. FRANCIS HOTEL

SAN FRANCISCO, CALIFORNIA

Sponsored by the Power Divisions of the American Society of Mechanical Engineers and the American Institute of Electrical Engineers with the cooperation of the San Francisco Sections, ASME - AIEE.

GENERAL INFORMATION

REGISTRATION

The Registration Desk will be located in the Olympic Room and will be open during the following hours:

Sunday, September 24	4:00 p.m. to 8:00 p.m.
Monday, September 25	8:00 a.m. to 5:00 p.m.
Tuesday, September 26	8:00 a.m. to 5:00 p.m.
Wednesday, September 27	8:00 a.m. to 3:00 p.m.

CONFERENCE FEES

ASME and AIEE Members	\$ 7.00
Non-Members	\$10.00
Student	NONE
Wives of Registrants	NONE

AUTHORS' BREAKFAST

By invitation, the authors, session chairmen and vice chairmen of each day's technical sessions will meet at breakfast to become better acquainted and receive last minute instructions. The breakfasts will be served in Room 220 at 8:00 A.M.

LADIES PROGRAM

Monday, September 25

- 9:00 A.M.—Coffee Hour
- 9:30 A.M.—Gray Line Tour of San Francisco—\$3.10
- 1:00 P.M.—Dutch Treat Luncheon and Fashion Show (St. Francis Hotel)

Tuesday, September 26

- 9:00 A.M.—Coffee Hour
- 10:30 A.M.—Tour of Chinatown—\$1.00
- 12:00 Noon—Dutch Treat Luncheon at Johnny Kan's Restaurant in Chinatown

For the convenience of the ladies, their Headquarters will be centered in the Hospitality Room (266) each morning from 9 o'clock until noon.

CONFERENCE HIGHLIGHTS

In planning to attend this conference you are urged to purchase your tickets in advance by using the Advance Registration Form on page. 00. The price per ticket is listed below and includes gratuities.

WELCOMING LUNCHEON

Monday, September 25

12:15 P.M. \$4.50 per person

LUNCHEON

Tuesday, September 26

12:15 P.M. \$4.50 per person

RECEPTION AND BANQUET

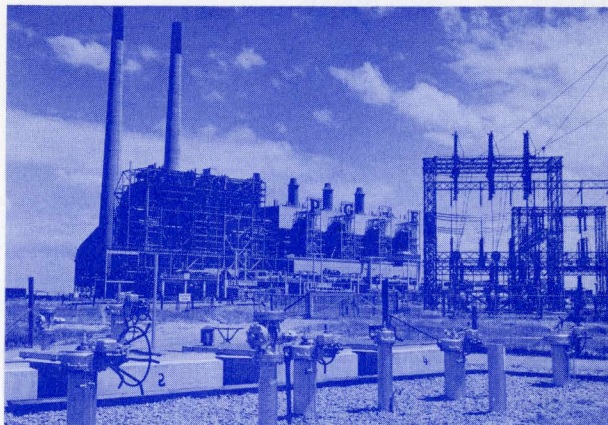
Tuesday, September 26

6:30 P.M. \$10.00 per person

INSPECTION TRIPS

Wednesday, September 27

1:15 P.M.—Tour to the Pittsburg Power Plant of the Pacific Gas and Electric Company near the city of Pittsburg. There is no charge for this tour.

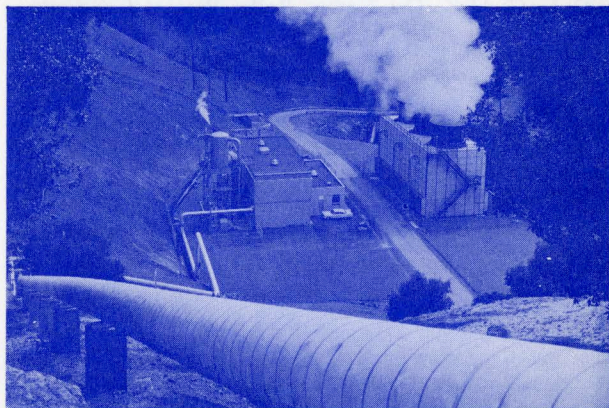


Pittsburg Power Plant—a general view of the largest electric generating plant west of the Mississippi, a property of Pacific Gas & Electric Co. In the foreground is piping for the intermediate gas pressure regulator, furnishing fuel for the Power Plant.

1:30 P.M.—Tour to San Francisco Bay Area Salt Water Conversion Research Center. There will be a charge of \$2.00 per person for this tour.

Thursday, September 28

An All Day tour to the Geysers Power Plant of the Pacific Gas & Electric Company. There will be no charge for this tour.



Geysers Power Plant—America's first geothermal power plant, a property of Pacific Gas and Electric Co. This unique plant utilizes natural steam from the bowels of the earth to generate electric power.



To assure preferred treatment and confirmation, this form or facsimile must be received no later than **September 11, 1961** By Executive Office, St. Francis Hotel, Union Square, San Francisco 19, California. If a room at the rate requested is unavailable, one at the nearest available rate will be reserved.

Name.....
Company.....
Address.....
City..... State.....

Arrival Date..... Hour..... Departure Date.....
Please reserve accommodations as checked below:

	Per Day—	Standard	Medium	DeLuxe
Single room for one	\$11-13	<input type="checkbox"/>	\$14-15	<input type="checkbox"/>
Double Bed Room				
for two	\$14-15	<input type="checkbox"/>	\$16-17	<input type="checkbox"/>
Twin Bed Room				
for two	\$16-18	<input type="checkbox"/>	\$19-21	<input type="checkbox"/>
Suites (Living Room and Twin Bed Room)	\$30-35	<input type="checkbox"/>	\$40-45	<input type="checkbox"/>

(Tear Here)

MONDAY, SEPTEMBER 25

9:00 A.M. — SESSION I—NUCLEAR PLANTS

Spectral Shift Control Reactor¹
JAMES COUGHLIN, The Babcock and Wilcox Co., Lynchburg, Va.

Status of the High Temperature Gas-Cooled Reactor²
TITUS LE CLAIR, General Dynamics Corp., San Diego, Calif.

The ESADA Vallecitos Experimental Superheat Reactor
JOHN BARNARD, General Electric Co., San Jose, Calif.
(AIEE Paper No. CP61-983)

Hallum Nuclear Power Facility, Prototype for Advanced Sodium Cooled Power Station
R. C. GERBER, G. L. LARSON, Atomic International, Canoga Park, Calif. and R. W. DICKINSON, General Electric Co., Pittsfield, Mass.
(AIEE Paper No. CP61-988)

2:00 P.M. — SESSION II—BOILERS

Low Head Boilers for Industry¹
R. H. WOLIN, Combustion Engineering, Inc., Windsor, Conn.

Operating Experience from a New Concept of Industrial Boiler Design¹
T. B. HURST, The Babcock and Wilcox Co., Barberton, O. and JACK CAMPBELL, Richfield Oil Co., Los Angeles, Calif.

Inspection of Eddystone Station and Conclusions Regarding 1150° F. Steam¹
J. H. HARLOW, Philadelphia Electric Co., Philadelphia, Pa.

8:00 P.M. — SESSION III—HIGH TEMPERATURE STEAM

Metallurgical Evaluation of Superheater Tube Alloys after 12 and 18 Months Exposure to Steam at 1200°, 1350° and 1500° F.

C. L. CLARK, The Timken Roller Bearing Co., Canton, O., J. J. B. RUTHERFORD, The Babcock and Wilcox Co., Barberton, O., A. B. WILDER, United States Steel Corp., Pittsburgh, Pa. and M. A. CORDOVI, International Nickel Co., New York, N. Y.
(ASME Paper No. 61-PWR-4)

Scale Formation on Austenitic and Ferritic Materials Exposed to High Temperature Steam
F. EBERLE and C. H. ANDERSON, The Babcock and Wilcox Co., Alliance, O.
(ASME Paper No. 61-PWR-3)

Evaluation of Weldments Joining Superheater Tube Alloys After Exposure to Steam at Temperatures of 1100-1500°F.¹
WILLIAM E. CLAUTICE, U. S. Naval Engineering Experiment Station, Annapolis, Md.

The Effect of Corrosion by Steam at 1100-1500°F. Upon the Heat Transfer Through Superheater Tube Alloys
H. L. SOLBERG, J. E. BROCK and W. J. REBELLO, Purdue University, Lafayette, Ind.
(ASME Paper No. 61-PWR-1)

¹ASME Paper not available—see box.

²AIEE Paper not available—see box.

8:00 P.M. — SESSION IV—OPERATING ECONOMICS

Transmission of Electric Energy Versus Transportation of Fuel²
W. E. HOPKINS, Stone and Webster Engineering Corp., Boston, Mass.

Auxiliary Drives and Factors Affecting their Selection
J. J. HEAGERTY, General Electric Co., Schenectady, N. Y.
(AIEE Paper No. CP61-989)

Significance of Outage Records in Estimating System Growth Requirements²
E. S. LOANE, General Public Utilities Corp., Reading, Pa. and H. A. ADLER, Commonwealth Edison Co., Chicago, Ill.

Economic Scheduling of Generation by Valve Points
A. P. HAYWARD, Duquesne Light Co., Pittsburgh, Pa.
(AIEE Paper No. CP61-986)

TUESDAY, SEPTEMBER 26

9:00 A.M. — SESSION V—AUTOMATION

Philosophy of Boiler Automation¹
R. D. HOTTENSTINE and R. W. EGGLESTONE, Combustion Engineering, Inc., Windsor, Conn.

An Approach to Automation of Power Plants Using the Concept of Parallel Programming¹
H. H. GORRIE, Bailey Meter Co., Wickliffe, O.

Improved Measuring Techniques for Steam Generator Heat Absorption²
J. F. COTTER and F. C. LISEVICK, Combustion Engineering Inc., Windsor, Conn.

2:00 P.M. — SESSION VI—INSTRUMENTATION FOR PLANT PERFORMANCE TESTING

Instrumentation for Central Station Dynamic Response Tests
D. HORWITZ, R. L. OSBORNE, Westinghouse Electric Corp., Lester, Pa. and H. G. DALLAS, Philadelphia Electric Co., Philadelphia, Pa.
(AIEE Paper No. CP61-984)

Digital Computer Application for Accurate Steam Turbine Performance Testing
KEN COTTON, J. C. WESTCOTT, General Electric Co., Schenectady, N. Y. and T. J. GLASS, General Electric Co., Phoenix, Ariz.
(AIEE Paper No. CP-61-985)

Computer Processing of Heat Rate Test Data²
G. A. MANEATIS and W. H. BARR, Pacific Gas and Electric Co., San Francisco, Calif.

¹ASME Paper not available—see box.

²AIEE Paper not available—see box.

WEDNESDAY, SEPTEMBER 27

9:00 A.M. — SESSION VII—TURBINE GENERATORS

Save That Turbine — A Starting Technique
J. R. HAMANN and D. C. PARKER, The Detroit Edison Co., Detroit, Mich.
(ASME Paper No. 61-PWR-2)

Transient Thermal Problems of Large Generators
M. R. LORY and C. L. WAGNER, Westinghouse Electric Corp., East Pittsburgh, Pa.
(AIEE Paper No. CP61-987)

Integrated Sea Water Distillation and Steam Power Generation Cycles¹
E. H. MILLER, General Electric Co., Schenectady, N. Y.

¹ASME Paper not available—see box.

AVAILABILITY OF ASME PAPERS

Only numbered ASME papers in this program are available in separate copy form until July 1, 1962. The final listing of available technical papers will be found in the issue of MECHANICAL ENGINEERING containing an account of the Conference. Prices are 50 cents to members of ASME, \$1 to nonmembers, plus postage and handling charges. Payment may also be made by free coupons which may be purchased from the Society in lots of ten at \$4 to members; \$8 to nonmembers. YOU CAN SAVE THE POSTAGE AND HANDLING CHARGES BY INCLUDING YOUR CHECK OR MONEY ORDER MADE PAYABLE TO ASME WITH YOUR ORDER AND SENDING BOTH TO: ASME ORDER DEPARTMENT, 29 WEST 39TH STREET, NEW YORK 18, N. Y. Papers must be ordered by the paper numbers listed in this program, otherwise the order will be returned.

AVAILABILITY OF AIEE PAPERS

Copies of AIEE papers can be obtained by writing directly to the American Institute of Electrical Engineers, 33 West 39th Street, New York 18, N. Y. Prices are 50 cents to members and \$1 to nonmembers. Papers must be ordered by the paper numbers listed in this program, otherwise the order will be returned.

ASME-AIEE National Power Conference -- Advance Registration Form
SEPTEMBER 24-27, 1961, SAN FRANCISCO, CALIFORNIA

Name	REGISTRATION FEES:	No.	Cost	Total
Company	<input type="checkbox"/> Member ASME and AIEE	7.00
City & State	<input type="checkbox"/> Non-member	10.00
Title	<input type="checkbox"/> Wives of Registrants	No Fee
Enclose check covering registration fee and social events and mail to:	<input type="checkbox"/> Students	No Fee
W. H. Nutting	SOCIAL EVENTS			
Chairman, Registration Committee	Monday, September 25th	<input type="checkbox"/> Welcoming Luncheon		
1961 National Power Conference	Tuesday, September 26th	<input type="checkbox"/> Luncheon		
c/o Pacific Gas and Electric Company		<input type="checkbox"/> Banquet		
245 Market Street	Please indicate your probable attendance at the following events:			
San Francisco 6, California	1. Pittsburg Power Plant inspection trip, <input type="checkbox"/>			
Make checks payable to A. H. F. Barlow	2. Wednesday, September 27th, no charge inspection trip, Wednesday, September 27th, \$1.50 per person <input type="checkbox"/>			
Advance Registration Forms must be received no later than September 11, 1961	3. Geysers Power Plant, inspection trip, <input type="checkbox"/>			
	4. Thursday, September 28th, no charge Gray Line Tour of San Francisco, Monday, September 25th, \$3.10 per person <input type="checkbox"/>			

The Power Divisions ASME-AIEE

CORDIALLY INVITE YOU

TO ATTEND THE

1961

**NATIONAL POWER
CONFERENCE**

SEPTEMBER 24 - 27, 1961

St. Francis Hotel

San Francisco, California

PLAN NOW TO ATTEND!

**AMERICAN INSTITUTE
OF ELECTRICAL ENGINEERS**

**33 West 39th Street
New York 18, N. Y.**

**Non-Profit Org.
U. S. POSTAGE
PAID
New York, N. Y.
Permit No. 5884**