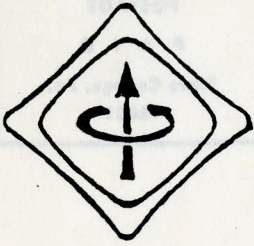


I. E. E. E.



Central Pennsylvania

NEWSLETTER

VOLUME 34

NUMBER 6

FEBRUARY 1990

IEEE FEBRUARY MEETING ANNOUNCEMENT

Speaker : Mr. Charles N. Claar, P.E.
Director of Institutional Engineering Advisory
Services & Affiliate Associate Professor of
Architectural Engineering

Topic : Some Directions in Energy Conservation

Time and Place: February 15, 1990 - - 8.00 P.M.
123 Electrical Engineering East
Penn State University

A dinner at 6.00 P.M. is planned prior to the meeting, at the Tavern Restaurant, 220 East College Avenue. Reservations for dinner can be made by calling Joan Andrews at (814) 863-1618, before February 15, 1990, 12:00 Noon.

SUMMARY OF THE TALK

With fluctuating energy costs, and pollution related issues associated with the fossil fuels, there are opportunities in energy conservation. In this direction, the Project on Restaurant Energy Performance (PREP) was completed in 1985. The main focus of this project was to evaluate potentials of energy conservation in commercial properties. The results of this research were extended to some of the changes in 1990 National Electric Code.

This presentation will delineate the findings of the research projects as well as highlight data acquisition, data verification, data analysis, and solutions related with end-use metering.

ABOUT THE SPEAKER

Mr. Charles N. Claar received his B.S. degree in Electrical Engineering, and M.S. degree in Architectural Engineering from the Penn State University in 1959, and 1974 respectively.

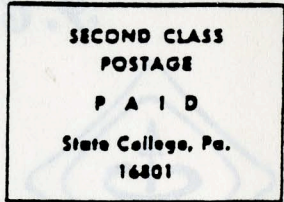
He is currently the Director of Institutional Engineering Advisory Services and Affiliate Associate Professor of Architectural Engineering at Penn State. His responsibilities include coordination, planning, design, operation, and maintenance of State owned facilities. Mr. Claar has completed several EPRI and utility projects. He is a Senior Member of IEEE and a member of Pennsylvania Association of Institutional Engineers.

CENTRAL PENNSYLVANIA IEEE NEWSLETTER
P.O. Box 7007
State College, PA 16803

"The Newsletter" (USPS 256-360) is published monthly except June, July, and August by the Central Pennsylvania Section of the IEEE

Subscription Rate: IEEE Members \$0.60 per year, Second class postage paid at State College, Pennsylvania

POSTMASTER: Send address changes to:
IEEE Service Center
455 Hoes Lane
Piscataway, NJ 08854



IEEE FEBRUARY MEETING ANNOUNCEMENT

Speaker : Mr. Charles W. Clark, P.E.
Director of Institutional Engineering Advisory Services & Affiliate Associate Professor of Architectural Engineering

Topic : Some Directions in Energy Conservation

Time and Place: February 12, 1980 - 8:00 P.M.
123 Electrical Engineering East
Penn State University

A dinner at 6:00 P.M. is planned prior to the meeting. At the Tavern Restaurant, 230 East College Avenue. Reservations for dinner can be made by calling Joan Andrews at (814) 863-1618.

SUMMARY OF THE TALK

CHAIRMAN'S COLUMN

In the questionnaire survey recently conducted, many of you expressed interest in participating in an electrical engineering public domain software library. The executive committee is taking steps to institute such a service. Look for more information in the next month's Newsletter.

This presentation will delineate the findings of the research project as well as highlight data acquisition, data verification, data analysis, and solutions related with end-use metering.

ABOUT THE SPEAKER

Mr. Charles W. Clark received his B.S. degree in Electrical Engineering, and M.S. degree in Architectural Engineering from the Penn State University in 1959, and 1974 respectively.

He is currently the Director of Institutional Engineering Advisory Services and Affiliate Associate Professor of Architectural Engineering at Penn State. His responsibilities include coordination, planning, design, operation, and maintenance of State owned facilities. Mr. Clark has completed several EPRI and utility projects. He is a Senior Member of IEEE and a member of Pennsylvania Association of Institutional Engineers.