



RELIABILITY GROUP NEWSLETTER

VOL. XV, ISSUE 4 - OCTOBER 1969
Paul Gottfried, Editor
Booz Allen Applied Research
Bethesda, Md. 20014

CONTENTS

EDITOR'S NOTES	1
CHAPTER NEWS.....	2
CHAPTER PROGRAMS	2-3
CHAPTER SEMINARS	3
CHAPTER ELECTION RESULTS.....	3
CALL FOR PAPERS: SPECIAL <u>TRANSACTIONS</u> ISSUE	3
MEET YOUR AdCom	4
PERSONALIA.....	5
RELIABILITY STANDARDS AND DEFINITIONS.....	5
SHORT COURSES	6
CONFERENCES.....	5
MEMBERSHIP ROSTER.....	7-12

EDITOR'S NOTES

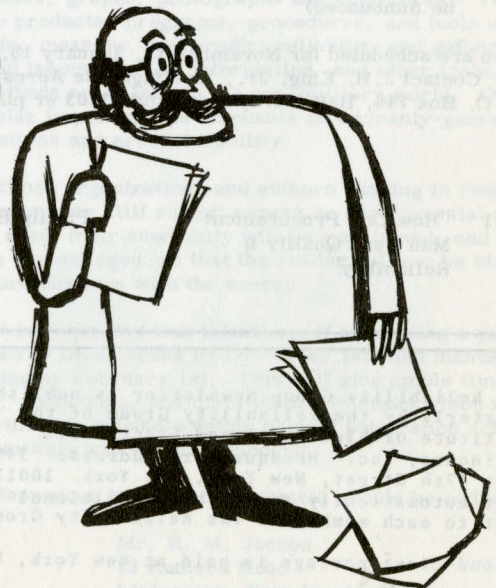
This first issue of the new season emphasizes the chapters and the members. All available material (except where it would duplicate contents of the preceding issue) is published herein in a format designed to eliminate three standard alibis:

I'm not active in my chapter because I don't know who the officers are.

I don't attend chapter meetings because I don't know where or when they'll take place or what the topic of discussion will be.

I don't promote G-R membership because I don't know who among my colleagues belongs and who doesn't.

Maybe you'll find it easier to participate than to invent new alibis.



CHAPTER NEWS

Binghamton

E. J. Patrick of the Missile & Space Division, General Electric Company, addressed the April 22 chapter meeting on "Flying Saucers - Fact or Fancy".

Canaveral-Daytona Beach

The May 5 meeting heard Marion P. Smith of Honeywell (and past chairman of the AdCom) speak on "Physics of Failure Techniques for IC's and LSI". This was followed at the June 18 meeting by a talk entitled "LSI-The Challenge of Today's Design" by A. B. Cozart of the Microelectronics Division, Radiation Inc.

Connecticut

Among late reports received by the Newsletter is one for the September 18, 1968, meeting at which Alan Knapp of the Norden Division, United Aircraft Corporation, spoke on "Availability - Its Role in System Effectiveness Studies". S. T. Karachuk of the Perkin-Elmer Corporation addressed the April 23 meeting on "Manufacturing Conditioning - A Method for Profit Enhancement".

San Francisco

The March 20 meeting featured a panel discussion of Reliability/Maintainability/Safety Interfaces. Panelists included Major Philip J. Stack, USAF SAMS0; S. W. Malasky, Aerospace Corporation; and J. T. Decker, Sylvania Electronic Systems.

Twin Cities

Dale VanderLinden of Honeywell, Inc., spoke on "High Reliability Performance with Mil Spec Parts" at the May 27 chapter meeting.

CHAPTER PROGRAMS

Baltimore

October 20 "Reliability Engineering from the General Manager's Viewpoint" (Location: To be Announced) E. F. Dertinger
ITT Telecom
Switching Div.

Meetings also are scheduled for November 17, January 19, March 16, and May 18. Contact J. H. King, Jr., Westinghouse Aerospace Division, M/S 525, P. O. Box 746, Baltimore, Maryland 21203 or phone (301) 765-3521.

Boston

September 11 "How One Procurement Man Used Quality & Reliability" Phillip Bosinoff

The Reliability Group Newsletter is published quarterly by the Reliability Group of the Institute of Electrical and Electronics Engineers, Inc. Headquarters Address: 345 East 47th Street, New York, New York 10017. Sent automatically and without additional cost to each member of the Reliability Group.

Second-class postage is paid at New York, N.Y.

October 9	"Corporate Liability for Defective Products" (Joint Meeting with ASQC)	Thomas A. Ford Defense Research Institute
November 13	(To be Announced)	William Cowan, Comm. of Public Utilities
December 11	(To be Announced) (Joint Meeting with G-NS)	Joe Fennell AVCO
January 15	"Consumer Affairs" (Joint Meeting with SAVE and ASQC)	Mrs. Virginia Knauer, Special Assistant to the President
February 12	(To be Announced)	(To be Announced)

All of the above meetings are to be held at RCA-Burlington with coffee and doughnuts from 5 to 6 p. m., speaker from 6 to 7 p. m., and dinner from 7 to 8 p. m.; contact Donna Hopkins, 274-7100, Ext. 867.

The chapter also will conduct a lecture series on "Reliability Testing" on October 14, 21, and 28 and November 11, 18, and 25. These lectures will be presented at the Mitre Corporation, Bedford, from 6 to 8 p. m.; Irv Bosinoff is the speaker and contact point (271-3829).

Philadelphia

September 17	"System Reliability via Analytic Simulation" Williamson's Dining Rooms, Barclay Building, Bala Cynwyd, Pennsylvania	Paul Giordano Bradford Computer Systems; Sidney Orbach, Naval Applied Science Lab.
--------------	---	---

October 21	(To be Announced) Open Hearth Restaurant, City Line Motor Inn, Bala Cynwyd	(To be Announced)
------------	--	-------------------

Additional meetings are scheduled for November 20, February 4, March 10, and April 16. All meetings start with cocktails at 6 p. m., dinner at 7 p. m., and the presentation at 8 p. m. As a new feature this year, the chapter plans to issue wallet cards listing meeting dates and other information to members and other interested people. For further information, contact G. W. Hunt, Publicity Chairman, 9 Fairfield House, Moorestown, New Jersey 08057.

San Francisco

September 11	"Parts Reliability Program, Mariner Mars '69" 8 p. m., Stanford University, Palo Alto	W. G. Lockyear Jet Propulsion Lab. Contact: Gil Bowers (415) 962-4111
--------------	---	--

October 9	"Computer Aids to Reliability Programs" 8 p. m., Bold Knight, Sunnyvale	F. P. Tatar Philco-Ford Contact: Lew Finch (408) 743-1577
-----------	---	--

November 13	"Reliability Engineering for the Small Company" 8 p. m., Stanford University	D. S. Scarborough Ampex Contact: W. W. DeVille (415) 326-4350
-------------	--	--

February 12	"Tour of Lockheed MSC Failure Analysis Laboratory" 8 p. m., Bold Knight	Ross Bumstead Lockheed MSC Contact: Lew Finch
-------------	---	---

March 12	"Screening/Burn-In of Semiconductor Devices" 8 p. m., Stanford University	Michael Economy DCA Labs Contact: W. W. DeVille
----------	---	---

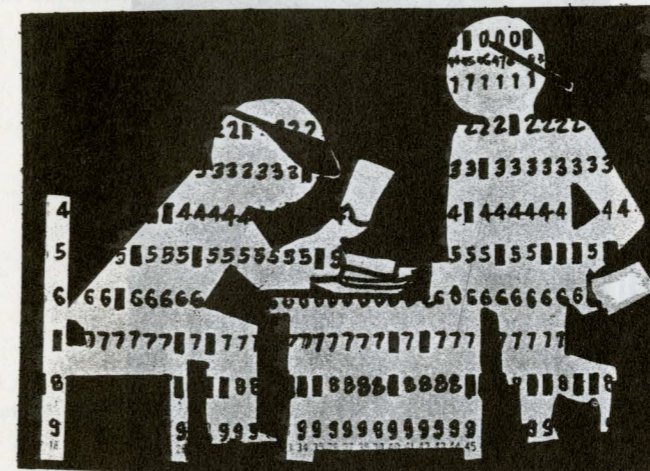
April 9	"Planning a Small Reliability Program" 8 p. m., Stanford University	K. O. Kelly Philco-Ford Contact: Charles E. Leake (408) 742-0824
---------	---	--

(Continued)

May 14	"Procedures for Reliability Engineering" 8 p. m., Bold Knight	A. D. Babbitt Ampex Contact: Gil Bowers
June 11	"Stress Analysis and Reliability Prediction/Small Vehicles" 8 p. m., Stanford University	J. W. Rhodes Philco-Ford Contact: Charles E. Leake

Program Chairman G. (Gil) Bowers
Fairchild Semiconductor Div.
313 Fairchild Drive
Mountain View, California 94040
(415) 962-4111

CHAPTER ELECTION RESULTS



Canaveral/Daytona Beach

Chairman	John Mills General Electric Co. P. O. Box 2500 Daytona Beach, Florida
----------	--

Montreal

Chairman	Len Ruggins Operations Research Canadair Ltd.
Vice-Chairman	Joe Mastrocola Telecom. Dept. Hydro Quebec

Secretary	Mrs. Gail MacDonald Component Engineering Canadian Marconi
-----------	--

San Francisco

Chairman	W. W. DeVille Philco-Ford-WDL 3939 Fabian Way Palo Alto, California 94303 (415) 326-4350, Ext. 6133
----------	---

Vice-Chairman	Charles E. Leake Lockheed Missile & Space Co. Dept. 68-10, Bldg. 529 Sunnyvale, California 94088 (408) 742-0824
---------------	---

Secretary/Treasurer	W. (Lew) Finch Lockheed Missile & Space Co. Dept. 62-60, Bldg. 104 Sunnyvale, California 94088 (408) 743-1577
---------------------	---

CHAPTER SEMINARS

Binghamton

October 18 "New Horizons in Quality and Reliability" (co-sponsored with ASQC); a one-day conference with three parallel sessions, two speakers at each session. State University of New York at Binghamton (Harper College), 8:30 a. m. to 4:30 p. m.

Boston

April 16 An all-day seminar with various speakers. Contact J. Pollock, 862-6222.

Philadelphia

May 21 The Philadelphia chapter's Third Annual Failure Analysis Seminar, at the University of Pennsylvania.

CALL FOR PAPERS

SPECIAL TRANSACTIONS ISSUE

The IEEE Transactions on Reliability announces a special issue on commercial-consumer-industrial reliability practices and problems to be guest-edited by Dick Jacobs. This will be specifically outside the field of material supplied to government agencies for military or space applications. Needed are articles between 8 and 20 pages in length complete with tables, graphs, photographs and references. Topics include products, programs, procedures, and tools used to evaluate, measure, and predict reliability and gather field data and laboratory test information, and other techniques and methods necessary in the non-military world. Of particular importance is emphasis on warranty-guarantee implications and product liability.

Those organizations and authors wishing to remain anonymous may still submit papers on controversial subjects in this area; their anonymity will be maintained, and products may be camouflaged so that the reader will not be biased in his future dealings with the source.

It is requested that intentions of submitting a paper be indicated to Dick Jacobs by December 1st, and manuscripts submitted by February 1st. This will give ample time for review, discussions and clarification in areas which might be too difficult to handle within normal publication schedules. All submittals will be acknowledged.

Responses to this announcement should be addressed to:

Mr. R. M. Jacobs
23 Rumson Road
Livingston, New Jersey 07039.

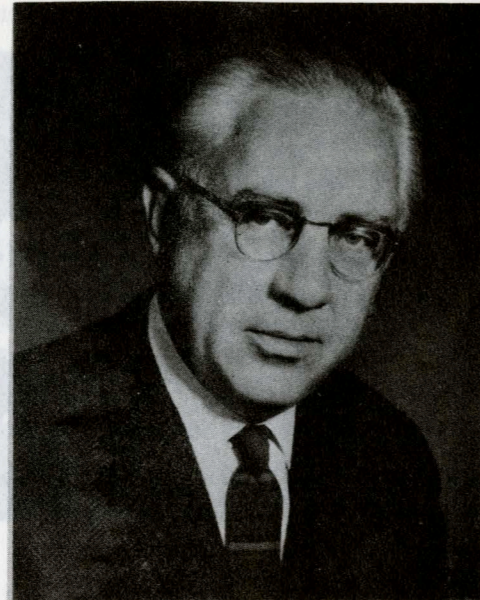
MEET YOUR ADCOM

Ray Knight

Ray Knight, who became a member of the AdCom this year, is Vice President-General Manager of ARINC Research Corporation, Annapolis, Maryland. A native of Salt Lake City, Utah, Ray received the Bachelor of Science degree in Electrical Engineering from the University of Utah in 1940 and the Master of Science in Physics from George Washington University in 1959.

Ray has directed ARINC's activities for more than 15 years, during which time the company has grown in size from 6 persons to approximately 250 and in interests from electron tube reliability to systems analysis and design engineering, primarily in the fields of communications, navigation, and information processing.

As a Senior Member of IEEE and a member of NSPE, he has been active for many years in professional committee activities throughout the country and has acted repeatedly as host for the foreign guests of the Annual Symposium on Reliability. Ray is a licensed professional engineer in the District of Columbia and in Maryland and is a member of Tau Beta Pi, Sigma Pi Sigma, and Phi Kappa Phi. He has lived in the Greater Washington area since 1951 and in Anne Arundel County since 1964.



Bill Sumerlin

Bill Sumerlin is the recently elected Vice-Chairman for Technical Operations. He has been a member of the AdCom since 1964, more recently serving first as Vice-Chairman for National Meetings, then as Vice-Chairman for Education, Development, and Standards. Coincidentally, during 1968 and 1969, he represents Region 5 on the IEEE Board of Directors.

Bill is Manager, Engineering Reliability, for McDonnell Aircraft Company, a component of the McDonnell Douglas Corporation. He holds both a Bachelor's degree and a six-year Engineer's degree in EE (electronics) from Stanford, and until 1954 devoted himself entirely to the design of electronic equipment for aircraft and missiles.

Bill was Chairman of Task 3, AGREE (1955-7), wrote the first 20 pages as overall editor of the AGREE report, consulted for the Darnell Committee, and served on Task 5 of WSEIAC (1963-5). He has been Chairman of the Board and General Chairman of the Annual National Symposium on Reliability, General Chairman of the Electronic Components Conference, Chairman of the Philadelphia Section IRE and St. Louis Section IEEE. He is a registered engineer in New York, and in 1968 received an IEEE Fellow Citation "for contribution to the introduction, implementation and advancement of reliability technology in industrial and defense programs." Bill, with his wife, Joyce (who is a Smith graduate), his son who entered Stanford to study engineering in September, and his four teenage daughters, lives in suburban St. Louis.



PERSONALIA

At the retirement ceremonies for G-R member Dr. Allen V. Astin, Director of the National Bureau of Standards, a letter from President Nixon was read. The President praised Dr. Astin for his "unique contributions" and said "the nation is proud to acknowledge its enduring debt" to him. Dr Astin served as NBS Director for one-quarter of its 68-page history. The ceremonies took place at the Smithsonian Institution.

RELIABILITY STANDARDS AND DEFINITIONS

Chairman Joe Naresky of the Reliability Standards and Definitions Committee (G-R) reports that agreement was reached on definitions for 33 terms. Under consideration are definitions for Accessibility, Availability, Inherent Availability, Capability, Dependability, Inherent, Interchangeability, Readiness, and Uptime; agreement on these terms before January is hoped for, and publication of the entire list of definitions as an IEEE Standard is planned.

CONFERENCES

November 3-5	1969 IEEE Conference on Automatic Support Systems for Advanced Maintainability, Chase-Park Plaza Hotel, St. Louis, Missouri	April 12-16	16th Annual Meeting of the Institute of Environmental Sciences, Sheraton-Boston Hotel
November 11-14	15th Annual Holm Seminar on Electric Contact Phenomena (Illinois Institute of Technology and IITRI), Sherman House, Chicago, Illinois	April 13-16	1970 Computer Graphics Annual Symposium (IEEE, IEE, IERE), Brunel University, Uxbridge, Middlesex, England
November 17-19	1969 IEEE Symposium on Adaptive Processes, Pennsylvania State University, State College, Pennsylvania	April 14-16	1970 Joint Conference on Automatic Test Systems (IERE with IME, IEE, IEEE, The Royal Aeronautical Society, The Institution of Production Engineers), University of Birmingham, Birmingham, Warwickshire, England (Abstracts 31 October, Papers 31 December)
December 10-12	3rd Asilomar Conference on Circuits and Systems (Naval Postgraduate School, University of Santa Clara, Stanford University, with participation by G-CT and G-AC), Asilomar Hotel and Conference Grounds, Pacific Grove, California	April 14-17	1970 IEEE International Geoscience Electronics Symposium, Washington, D.C. (Abstracts 1 December)
December 10-12	1969 Conference on Reliability in Electronics (IEEE, IEE, The Institute of Physics and The Physical Society), London, England	May 5-6	1970 Annual Appliance Technical Conference, Leland Motor Hotel, Mansfield, Ohio
January 14-16	1970 Hawaii International Conference on System Sciences (University of Hawaii, with participation by G-AC, G-CT, and SIAM), Honolulu, Hawaii	May 13-15	1970 Electronic Components Conference (IEEE, EIA), Statler-Hilton Hotel, Washington, D.C. (Abstracts 15 November, Papers 1 March)
February 3-5	1970 ANNUAL SYMPOSIUM ON RELIABILITY (G-R, ASQC, IES, ASNT), BILTMORE HOTEL, LOS ANGELES, CALIFORNIA	June 15-19	1970 IEEE International Symposium on Information Theory (IEEE, Union Radio Scientifique Internationale), Hotel Huis ter Duin, Noordwijk, The Netherlands (Abstracts and Papers 1 January)
February 18-20	1970 IEEE International Solid-State Circuits Conference, Sheraton Hotel and University of Pennsylvania, Philadelphia, Pennsylvania	September 21-24	1970 IEEE International Conference on Engineering in the Ocean Environment (IEEE Oceanography Coordinating Committee and Panama City Section, with participation by U.S. Naval Ship Research and Development Laboratory, Florida State University, Louisiana State University), Panama City, Florida (Abstracts and Summaries 3 March)
March 23-26	1970 IEEE International Convention, New York Hilton and New York Coliseum		



SHORT COURSES

Newsletter policy with respect to short-course announcements, as established by the AdCom, is to provide publication for information only. No endorsement is implied, and no check on course content or instructor qualifications has been accomplished.

George Washington University

Statistical Methods in Reliability: November 17-21.
Five days, \$275. Write: Mr. Jack E. Mansfield,
Coordinator, Continuing Engineering Education,
The George Washington University, Washington, D. C.
20006

University of Wisconsin

Mathematical Models for Solid State Devices:
November 13-14. Two days, \$70. Write: Mr. David
P. Hartmann, Institute Director, 725 Extension Bldg.,
432 N. Lake Street, Madison, Wisconsin 53706

Display Systems Engineering: March 2-6. Five days,
\$200. Write: Mr. Donald E. Baxa, Course Coordinator,
above address.

MEMBERSHIP APPLICATION IEEE RELIABILITY GROUP

IEEE HEADQUARTERS: 345 EAST 47th STREET, NEW YORK, NEW YORK 10017

NAME _____ IEEE MEMBERSHIP NO. _____

COMPANY _____

MAILING ADDRESS _____

CITY _____ STATE OR COUNTY _____ ZIP CODE _____

FIELD OF INTEREST _____

- I am a _____ member of IEEE and hereby apply for membership in the Reliability Group. I enclose a check for the Group fee* (made payable to IEEE).
- I am not now a member of IEEE but would like to join. Please send information.
- I am interested in becoming a Reliability Group Affiliate. Please send information.

* Group Fee: \$5.00 for IEEE members of all grades except Student
Student Fee is \$2.00
One half rate on payments received April 1 through September 30.

RELIABILITY GROUP MEMBERSHIP ROSTER

Region 1

BERKSHIRE

JESS AGUILAR
RICHARD T ELDER
L HUANG
A A TIEZZI
R R WARRINER

BINGHAMTON

PALMER W AGNEW
D C BAKER
B H BALDRIDGE
H J BEAL
J B BIRD
GEORGE COWBURN
ROBERT TODD DOWNEY
JOSEPH E FYRER
J T GORMAN
C L HACKLEY
FITZHUGH L HAMILTON
G HESS
E P HOJAK
EDGAR F JAHR
A R JOHNSON
CURT I JOHNSON
F THOMAS JONES
G W KIMPEL
A JACK KORNBLOH
R E KUEHN
NELSON S LAWRENCE
J M LUKAS
K A LYMAN
QUENTIN G MARBLE
J PAULSON JR
E L PITTSLEY
JOSEPH J REXFORD
S R ROMAN JR
SALVATORE F SARACENO
CARL J SCHRECK JR
C B STIEGLITZ
T J ULRICH
V G VANCE
J W VAN HORN
G E WHEELER
M A YOUNG

BOSTON

J M ALDEN
A ALFORD
ANDREW ANDERSON
R E BAYLISS
MICHAEL A BERG
D E BLACKMER
GEORGE J BLAKEMORE JR
R L BLANCHARD
B B BODENDORF
I BOSINOFF
G G BRADLEY
C BUNTSCHUH
G S BURR
L R CADRAN
E K CARELIS
R CARRUBBA
J W CHAPIN
B M CHIN
JAMES E CLINE
D C COMSTOCK
S CUDLITZ
P E CURTIS
D L DAWES
A J DE BERARDIS
M J DEPOLITO
M DERANIAN
F J DOLAN
C DONOVAN
WM H DOOLE
J DORFMAN
JOSEPH W DOWNEY
E T DOWNING
A C DRISCOLL
DANIEL DRUMHELLER
A DUSHMAN
C J DYMEK
DONALD R EARLES

BUFFALO

W J ATKINS
G B CLAUSEN
R F COHEN
DONALD J FREEMAN
L W HERCHENROEDER
E A MILLER
R A NOWACKI
D L PIERCE
J P WELSH

CONNECTICUT

ALBERT J ABELE
JOSEPH T BONNER
C J BOUCHER
L E COUTERMASH
R G DI PAOLA
A W EVANS
G W FEISTHAMEL
F X FINNERTY
R W FITZGERALD
A F FREISINGER
L W F GEARY
L F GILBERT
ROY E GITTER
JOHN E GOMBOS
E A HADDAD
L E HAWKINS JR
S E JACKE
G C KALANDER
S T KARACHUK
CLARENCE KARAN
I M KERN
E J KICZUK
HERMAN J KOCAR
J KRELL
C A LIDBACK
J A MC DONNELL
A MULLER
G W NEILL
RICHARD NAWROCKI
L PABIAN
E L PAGANO
A F PREMO JR
J F RAYE
J H SCHUMACHER JR
J SHERMAN
J SHOGREN
R R SIEGERT
P B SMITH
B M TASHJIAN
A J VAN WOERKOM
G B WAGNER
F C WARNER
J G WOHL
DANIEL C ZELBO

ELMIRA-CORNING

R R BARBER
H D HULME

ITHACA

A S BUCHMAN
S W ZIMMERMAN

LONG ISLAND

DUNCAN BADENIUS
FRANK H BANKS
V J BONARDI
D W BOND
PAUL F BOPP
T A BUDNE
J H BURGER
R P BURR
J J BUSSOLINI
S J CAPEK
VINCENT CASALE
R K CHABER
J H S CHIN
D CHRISTIANSEN
R W CLEMENS
G J COHEN
G COREN
IRA B COREN
H COSTIDIS
G O DAGAVARIAN
GLORIA C DELLAGATTA
P DIMATTEO
LEONARD R DOYON
D W DRUM
E E EBERLE
R M EMBERSON
D B ERLICHMAN
A S FEINSILVER

MID-HUDSON

J P FERRARO
M H FIRST
IRVING N FRIEDLANDER
ELLIOTT D FRIEDMAN
D C GALA
A FISCHER
B R GARRETT
R H GAUGER
GEORGE A GEDNEY
CLAUDE E GIBSON
B GLEIMER
R I GROSS
ROBERT E GRUBER
KENNETH A HALLER
J N HANSEN
RAYMOND HASTINGS
B HELD
DAVID HOROWITZ
R E JACK
L JACOBSON
A C JOHNSON
GLENN W KIMMEL
M J KIRBY
M M KLEIN
R KLEIN
E KLOSKO
ARTHUR U KOPPEL
D J KOVENSKEY
G G LEEDS
JAMES LEGGIO
R A LEISWANN
E O LEVERS
G R LEVY
ROGER LEW
W J LIGHT
D T GEISER
MILTON HAUS
V C KAPPER
GEORGE KASOUF
P M KETCHUM
C W MEINEN
JEROME KLION
A R KRUEGER
HAROLD NAOLER
S P MERCURIO JR
R E OAKES
J J OKRENT
EDWARD P OCONNELL
ANTHONY D PETTINATO JR
M J SMITH
LEON SPERLING
A L TAMBURRINO
JOSEPH VACCARO
W F WERNER
D A WETHERBY

MOHAWK VALLEY

D F BARBER
ROBERT B CHAMBERLAIN
E O CODIER
ANTHONY COPPOLA
W H DICKSON
BRUCE W DUDLEY
R M EBERLY
ROBERT W FINK
D T GEISER
MILTON HAUS
V C KAPPER
GEORGE KASOUF
P M KETCHUM
C W MEINEN
JEROME KLION
A R KRUEGER
HAROLD NAOLER
S P MERCURIO JR
R E OAKES
J J OKRENT
EDWARD P OCONNELL
ANTHONY D PETTINATO JR
M J SMITH
LEON SPERLING
A L TAMBURRINO
JOSEPH VACCARO
W F WERNER
D A WETHERBY

NEW HAMPSHIRE

R H FLUGRATH
R H HOLLIS
STANLEY L MARRS
P C MUNROE
JOHN M SWANEY
E K WIMPY

NEW JERSEY COAST

JOHN P BREICKNER
R L DEININGER
HARRIS DRUCKER
L J GITTEN
PAUL E GRIFFITH
S GRUBMAN
G HOELLERICH
D R HORTBERG
L E HUNT
BILL KANNE
DONALD G KOLIBAS
A LANDBERG
CALVIN W LARKIN
G T LOMAN
B S LOWING
V J MANCINO
F L MARTINSON
J V MC NULTY
BERNARD MEYER
GARY NEUMAN
CHARLES T PIERCE
A W ROGERS
R F ROLLMAN
WILLIAM SARDO
O J SCHULTZ
LLOYD E SNAPP
JULIUS SOLED
JAMES R STAAL
J J SZAFRANSKI

MAINE

FRED FERNANDEZ
L P O'DONNELL
G C TIBBETTS

NEW YORK

L C APICELLA
JOHN W ARNOLD
H ASCHER
J R BAKER
CHARLES A BENENSON
F BERZINS
G BIGEL

W E BRAUN
D M BRENDER
ARNOLD BROWNSTEIN
R J CANNIZZARO
H W CHAPMAN
WILLIAM R CHRISTIAANSE
FRANCIS S CONBOY
DOMINIC N COSTANTINO
M A COTTER
JAMES M CULLINAN
J J DROVOSTEP
ROGER F DWYER
RONALD ENGLEMAN
F L ESTERNAUX
MELVIN S FINKELSTEIN
JAMES J FOTTI
R J FRANKLIN
R J GARMAN
M D GENZER
J GERACI
L GLEIMER
A N GOLDSMITH
RICHARD GOLDSTEIN
NESTOR GOMEZ
D M GOODMAN
M L GRODER
M GUERIN
VIJAY KUMAR GUPTA
H S HALL
J HANFT
EDWARD B HORN
SAM S HUSSON
W A JASSON
ROLAND KHERA
M KLEIN
T R KOHLER
WALTER LANDAUER
BARRY J LILES
GEORGE A MANGIERI
A E MARTIN
ROSE CAMBRIA MATTHEWS
G B MC CARTER
F MC GINNIS
MARTIN MESSINGER
R J MOLINELLI
HENRY MOSS
JAMES J OCONNOR
A PACHYNSKI JR
H PARRONDO
E G D PATERSON
HARRY A PEARSON
HOWARD PERLSTEIN
R H PINTELL
THEODORE POLLOCK
MARVIN ROBINSON
W R RYAN
M SAPSOWITZ
A J SCHEIMAN
S SCHENKERMAN
M L SHODMAN
CHARLES A STEFFENS
JTRI SVERAK
M B TUTTLE
C W TUTTLE
VERNON VIOLA
J S V WALTON
J E WATKINS
GEORGE D WEINSTOCK
B S WIENER
EDWARD WILLETT
J WINTERS

KENNETH GRACE JR
V D GRAY
RICHARD F HAHN
G S HAWKINS
HARVEY S HERSHKOWITZ
G L HETZEL
T A HJORTH
R M JACOBS
MYRON R JENNINGS
C L KELLY
C K KIRCHENBAUER
LEON J KOZLOWSKI JR
EVERETT I LABAGH
R E LAFFERTY
DAVID LAPPIN
JOHN D LEGGETT
A LOBERT
S A MALLARD
G J MARIANI
SIDON MARKOWITZ
RICHARD P MASSEY
BETTY MC VEIGH
FREDERICK A MENDEZ
A S MINDES
ADRIAN G MOONS JR
J A MORTON
WAYNE D MOYERS
CONRAD R MULLER
R J NEU
R J NEWMAN
G PAGE
A G PRANGLEY
WILLIAM W PROVETT
HENRY T RAND
B R RAPACKI
WILSON W REILLY
F A REINHARDT
A J ROSENTHAL
P L ROSS
STEPHEN F RURAK
R L SAMSON
A R SANTOPIETRO
R B SCHWARTZ
SOL M SELTZER
D N SHAW
EDWIN A SHELL
W H SKIDMORE
NORMAN SLURZBERG
M SPINOSA
THEODORE S SPITZ
H A STONE JR
V C THOMAS
GILBERT TINT
R S ULLMAN
R H VAIDEN
H N WAGAR
WILLIAM R WANKMULLER
J E WARREN
E A WEAVER
RICHARD N WENMAN
G L WICKLAND
JOHN F WILHELM
ROBERT C WINANS
A F V ZAGIER

THOMAS F OLTORIK
RICHARD F PITTMAN
GORDON E PRESHER JR
L S RAMOS
L J SCHNECK
F B SCHOENFELD
JAY D TEBBO
W C WIEDEMANN
FREDERICK E ZOGG

SCHENECTADY
H CHESTNUT
L K KIRCHMAYER
BERND K KNOERR
JOSEPH G KUZAWSKI
ALBERT A LOSCHIAVO
P J SANTORO
M E SCOVILLE
A J WOOD

SYRACUSE
W B BAHR
M L BIENVENU
R R CARNEY
C J CLEARY JR
F S DE SANTIS
D T DOHERTY
E C ERNST
HAROLD L GILMORE
R A HERR
R C HOADLEY
F F LEINWEBER
F A OLSON
J D RODEMS
JOHN F SCHENCK
O H SHUART
J R THURELL JR
D D WARD JR
C S YERIAN

VERMONT
MC CREA A BADER
W J DEVER
ANDRE C FORCIER
A W FORSYTHE
ANDREW N MC LAREN
RALPH F PENOYER
DAVID SHAW
A E SMITH

Region 2

ALLEGHENY MOUNTAIN
WILLIAM R STOCK
WILLIAM J WINTERS

BALTIMORE
JOHN W ADOLPHSEN
ROBERT J BEHLER
J L BENNETT
WOODLEY C BLACKWELL JR
EDWARD I BOWEN
J P BRACH JR
T K BROWN
A G BUSH JR
ARCHIE L BUSHEY JR
C K CROWE
CHARLES V CURTIS
T F DWYER
C J FRAMPTON
M K FROME
E GLMAN
H N HARRIS
J R HECK
RILEY C HORNE JR
H C JONES
CHARLES KARR
PETER E KATZ
D B KEIDAN
JAMES H KING JR
C R KNIGHT
S W KRUTE
T A KURZMILLER
A L LAMBERT
GEORGE H LEINWEBER
EUGENE R LEVITT
H L LEBMAN
W A MACCREHAN JR
THOMAS E MANSFIELD JR
A C MARTIN
ROBERT F MATTHEWS
N J MC AFEE
M A MCGREGOR
L G MC PHERSON
ROY W MESSNER
J H MILLER
CHARLES D MULES
ROBERT B PALECHEK
W D PALMER
JOSEPH L PIETROWIAK JR
W B REESE
L L REISSER
L RIEGER
W A SCANGA
E E SCHENEMAN
R H SEIDL

PRINCETON

PROVIDENCE

ROCHESTER

NORTH JERSEY

H A AUGENBLICK
R A BARKER
J BAUGHER
J L BELFI
DONALD M BELTZ
F B BERGER
H BERNSTEIN
J BLASS
RICHARD BLUHM
R J BORRMANN
EDWARD P BROCKEL
SALVATORE R CALABRO
D J CARPENTER
B K CHENG
S M CHERKASKY
GILBERT CHERNACK
R W COBEAN
C J CRAWFORD
E E CRUMP
HAROLD T CURRAN
C DAVIDSON 3RD
L M DAVIDSON
G E DAVIDSON
NICHOLAS DE FALCO
J L DELANY
T J DICKERSON
W G DONALDSON
WALTER A DUSCHKA
G H EBEL
H G ELWELL JR
ROBERT C FERNICOLA
E B FERRELL
ANTHONY J FINOCCHI
VINCENT J GAROFANO 3RD
H H GATTER
WING K GEE
J H GERTH
M F GOGGIN
SIDNEY GORMAN

R F SMELTZER
STANLEY W TIMBLIN
NORMAN E TYSON
J E VICTOR JR
E T WALSH
R L WILLIAMS
T G WORLEY

CANTON
A R PARK
CHARLES M WEEMS JR

CENTRAL PENNSYLVANIA
A F PIEPER
E W SCHMIDT

CINCINNATI
LEON BASS
F J BRINKMILLER
H M FULDNER
JOHN SPINK
D D WILLSON

CLEVELAND
R C CRAFT
M S HARTLEY
H A KAHLE
R H KUHNAPFEL
L M NAGYOSZY-WOLF
C W REASH
F A SILLAG
N SPIRO
C P STOCKER
L R STONE
E E SWANSON JR
J V TRENTY
J V WERME

COLUMBUS
R H BRIGGS
R R CHOPE
J L EASTERDAY
CHARLES W HEFNER
P W RENAUT
L H STEMBER* JR
R VAN HORN

DAYTON
D F ALDRICH
R A ANDES
B BONOSEVICH
B W COUCH
ROBERT I DAVIS
RONALD A FULLERTON
ROY HOLIAN
STEPHEN A HUNTER
JOHN F JOHNSON JR
R H KAUFFMAN
N KIMMEL
T T KWO
THOMAS E MAY
C E MC LAUGHLIN
CHARLES F MORRISON
A K PATEL
T L REGULINSKI
NATHAN L RODGERS
ADRIAN J ROGERS
RICHARD L ROOTES
N T SIMOPOULOS
FRANCIS B STUMP
F R TAYLOR
R E WORTHY

DELAWARE BAY
R H LEE

ERIE
C A BURKHARD
N CODA
THOMAS L VENABLE

JOHNSTOWN
DAVID L GINGERICH SR

LEHIGH VALLEY
R E BUSHNER
H B FROST
A F KOHL
GEORGE J MEYERS JR
R L ODENWELLER
DENNI E PARTON
D S PECK

LIMA
J A JENNINGS JR

NORTH CENTRAL OHIO
LEO E LIPOMANIS
W H LYNN
C G SVALA

PHILADELPHIA
S L ABBOTT
J J ABRAMS
W R ALEXANDER
DR W G AMEY
R J ANSELL
H G APPEL SR
G ASHENDORF
I L AUERBACH
HARVEY R BARTON JR
J W BEATTY
GORDON H BECKHART
T L BENES
R S BERKOWITZ
J BOHRER
HENRY T BOREEN
LEON BROWN
S W BURROWS
S CANALE JR
JOHN B CATALDO
J F CHALUPA
M F CHAMOW
F R CLARK
W P COLE
G L CONKLIN
J J DAVARO
L A DE ROSA
J A DEVER
H S DODGE
THOMAS L FAGAN
IRWIN A FEIGENBAUM
M P FEYERHERM
F T FLOOD
CONRAD J FOWLER
A W FRIEND
MORTEN GALE
E E GARFIELD
G Y GILBERT
A B GITTELMAN
P GOLDSTEIN
J H GOODMAN
H J GRAY JR
S N GREENBERG
H T GREENWOOD 3RD
S HALPERN
C R HEISING
G W HUNT JR
I HYAMS
J R ISKEN
KENNETH N JACOBY
E D KARMJOL
A P KAWALEC
J H KELLY
J KIMMEL
R KOOPERSTEIN
N R KORNFELD
N H KUTNER
R D LUCKENBAUGH
J J LONDON
R F MAGYARICS
ANTHONY J MANNINO
CHARLES B MAYER
R MAYER
V R MONSHAW
M J MOZENTER
A G NEWHAM
NICHOLAS Y NIEH
R L NUNNALLY
M M OFLAHERTY
F E OLIVETO
R H OVERDEER
S F PESZKA
M H PLOFKER
H PUESCHNER
A L PUGH JR
M RAPHELSON
H E REESE JR
JAMES V ROMANO
N K ROMANOFSKY
H ROSENTHAL
L J RYAN
L E SABINE
NICHOLAS SALATINO
JOHN J SALERA
S SCHACH
A SCHNIPPER
H E SCHOCK JR
B R SCHWARTZ
W A SHERIDAN
WILLIAM G SLOWIK
W T SOUTHWORTH
W T STARR
J O STEPHENS
G E SYKORA
JAMES F TALBUTT JR
R W TAVOSO
BENJAMIN W TERES
B TIGER
DAVID I TROXEL
W A VISHNER
ALFRED S WALL
A R WARE
K G WEABER
HAROLD WEINBERG

K WEIR
W THOMAS WEIR
RALPH E WEST
E J WESTCOTT
NORMAN R WHEELOCK
HOWARD S WISHENGRAD
H J WOLL
H L WUERFFEL
S ZWERLING

PITTSBURGH
T A DALY
FRANCIS E FAIRMAN 3RD
F B HYLAND
R F LAWRENCE
MENG M LI
J L MICHAELIS
J W BEATTY
J H MURPHY
W E NEWELL
RODOLFO J OLANO
J T SHINCOVICH
W E SHOPSKY
T L STEPHENS

SOUTHERN NEW JERSEY
D A FISHER
C M RUSSELL
JOHN J WOJCIECHOWICZ

SUSQUEHANNA
P H ARNOLD
G W CARR
H F DE FREES
HAROLD N HILLEGASS
M M HOLCOMBE
R E MC NICKLE
D E MYERS
E E SPITZER
R S WALTON

WASHINGTON
J D AHLGREN
R B ALDRICH
D A ALLEN
U L ALLEN JR
DR A UEN
B L AVERY
CALVIN L BAKER
P W BARNHART
R BATEMAN
E B BELL
G L BEYER JR
G T BIRD
W B BISHOP
A C BLANKENSHIP
R J BOTEILHO
M BRENNER
WILLIAM C BROSHA
E W BULLINGTON
M H CARL
F J CHAVENKA
PETER E CHESBROUGH
D M CLUNIE
B T COLANDRENE
J E DAVEAU
A J DELLINGER
A C DOERMANN
L M DORNEY
E ISNER
W A ELLIS
S B ENSLEY
F E ERDLE
W P ETTER
I J FOX
H J FOX
RICHARD W FRENIER
W F GALLAGHER JR
J R GARAFOLA
V E GARDNER
J J GASPAROTTI
W R GIBSON
L C GILLS
HAROLD GOLDBERG
LAWKENCE GOLDMUNTZ
P GOTTFRIED
J R GOUGE JR
W C GREEN
KURT GREENE
J WALTER GREER
C C G HAUFFMAN
L J HOCKING
R O HOLBROOK
JAMES L HOLLIS
J R HOLMES
MILTON W HOROWITZ
A HOTVEDT
WILLIAM J HUCK JR
T T JACKSON
J JANSEN
C M JAGUES
ERNEST R JERVIS
A M JOX
H J KENNEDY
B KERNE
R C KITCHEN

D C KOCHENDARFER
JUNE KOSTYK
F N LEE
J E LEVY
GEORGE N LEWIS
O I LIKHACHEV
H E LCGSDON
G E LOMAS
A LUNCHICK
J C MAYCOCK
D F MILESON
R S MORTON
WILLIAM L MUCKELROY
R E MULLFORD
P J MULLIGAN
R C MURPHY
R T MYERS
ELIDIO J NUCCI
T L PANTZ
A PLAIT
A S POLLACK
R R PUTTAMP
T R RAO
LUCIEN E RAWLS
W M REDLER
OSWALD R REH
MURRAY ROGDOFSKY
J R ROSENBLATT
I J ROSS
J L RYNNING
J SACKS
S SAITO
HENRY SCHRAMM
CHARLES J SENSALÉ
ORLANDO C SEVERO JR
GUSTAVE SHAPIRO
JACOB M SHAPIRO
WILLIAM A SHORTT
R J SKAPURA
TILLMAN B SMITH
RONALD J SPEIGHT
JOHN O SPENCER
H W L STREET
S TAUB
J W THOMAS JR
D M THOMPSON
MYRON TRIBUS
EARL VESTAL JR
ANDREW J VESNOVSKY
R J VOLLMER
R J WAGNER
R A WAINWRIGHT
DR LEO WALDICK
WILLIAM E WALLACE JR
D W WEISS
EDGAR F WOOLERY
GEORGE L WOOLEY
H N ZELLEY

ATLANTA
R S DUGGAN JR
W R FARBEN
ROBERT C HYERS
M D PRINCE

CANAVERAL
EARLE H BARBER
T M BARLOW JR
RICHARD A BEWERSE
C M BIRD
W J CAHILL
LOREN D CARLSON
W R DE MIRANDA
J ESTEVES-HERRERA
JACK B FREEMAN
J J GRILLO
E J HEISEL JR
ROBERT E HILTON JR
JERRELL HOLLAWAY
F JIMEIAN
J R LA CAPRA
D R LOVITT
WILLIAM G MULARCHUK
J C ROBERTSON
FREDERICK SANDBERG
JOE H SCRIVNER
LEE R WEBSTER

CENTRAL VIRGINIA
W O HANSEN
K O LEE
J I LEVINE
J BURTON LINKER JR
P S MASON JR
EDWARD G MENAKER

CHATTANOOGA
FRANK ISBILL

DAYTONA
A F H BISCHOFF
A J HOLSTEAD
D E LANE

Region 3

J B MILLS
P PADGETT JR
B D ROBERTS
G L TOMLIN
G F WALKER

EAST TENNESSEE
DOUGLAS W ALDREDGE
JOHN P LAND
M WARREN JR

EVANSVILLE-OWENSBORO
T D ELLIS
C P HUBBS
W J RICHERT
W A WILLIAMS

FLORIDA WEST COAST
VICTOR K AUBREY
P H BETTS
J R DANGLER
S W FAUGHT
H L GOLDBERG
RICHARD V HART
R E HENNING
C W HIERS
D R HUME
H N JASPER
W P KOECHEL
T G LACY
G E LAMPKIN
G E LA VEAN
E R LIND
ERNEST F MC KENZIE
RANDOLPH J SCHAUBS
M P SMITH
HAROLD Z SNYDER

FORT WALTON
HUGH M ADAMS

GAINESVILLE
EGINHARD J MUTH

HAMPTON ROADS
J M DENSON JR
R A JOHNSON SR
J J STROUT
JOSEPH P ZALUSKI

HUNTSVILLE
F E ANDERSON
M J ARILDSEN
RICHARD N ARMSTRONG
K E BALL
R P BECK
K BLYTHE
ROBERT A BROWN
D R BUSH
J G CAFFREY
S S CAMPBELL
D I CILIAX
M H COGGINS
C D COX
N E DONLIN
B J DORAN
CHARLES B DUNCAN
R FILIPOWSKY
JAMES L FISCHER
H FRITZELL
B D GLOVER
J A GONSKI
L C HAMITER JR
F S LINN JR
J H MOTES
P F NAPOLITANO
C H OXRIEDER
CHARLES A POLLARD JR
STEVEN F ROSING
D C SOLLBERGER
J A STANFORD
MARTIN STUK
WILLIAM L ULLOM
SAMUEL WOLIN

LEXINGTON
EDWARD G CRABTREE

MEMPHIS
E F DERTINGER
H H GRANTHAM
BILLY G HELTON

MIAMI
G E ALLEN JR
HERBERT AUSTIN COOK
V J GODLEWSKI
L L GORDON
J WALTER KELLER JR

SAM S LAM
E G PARSONS
LYNN W SAGE
JAMES R SCHULTHEIS
GAVIN Y WILSON

MIDDLE TENNESSEE
J T COOPER

NASHVILLE
JOHN C NOBLE

NEW ORLEANS
F S BIRD
G J FOUNDAS

ORLANDO
JOHN A BAUER
L R BROWN
E J LEMANSKI
ROBERT M NORTHRUP

PALM BEACH
R J BRISCOE
F W DAUER
KARL E POMMER 2ND

SOUTH CAROLINA
PATRICK W BOYLE JR
T T CANNON JR
H V DE MATOS

VIRGINIA MOUNTAIN
RONALD D COLANGELO
ORMAN K OLSEN

AFFILIATIONS OF N.C. SECTIONS
H E COBB
W J FOLEY

CENTRAL NORTH CAROLINA
H E COBB

CHARLOTTE
W J FOLEY

EASTERN NORTH CAROLINA
L H ARRINGTON
T I EDWARDS
R A EVANS
C A KROHN
JOHN S SHALLCROSS
WILLIAM S THOMPSON

WESTERN NORTH CAROLINA
ALFRED B GOUGH
ROBERT L WRAY

WINSTON-SALEM
J W ELLIS

Region 4

CEDAR RAPIDS
R W HOKE
WOLFGANG E LOESCHER
D E LOOP
J O NIDAY
D J SCOTT
A J THUAN
R L VANDER HAMM

CENTRAL ILLINOIS
C J ARMSTRONG
R W BUNNER
J S GROUT
JAMES E LOHNES
K MC GEE
W J POPPELBAUM

ILLINOIS VALLEY
D BUERSCHINGER
G G LINDSTROM

IOWA-ILLINOIS
F K SERKLAND

MADISON
R A JOHNSON
R L KRAMER

CENTRAL INDIANA
H G BEAR
S O BICKEL
H E BRADLEY
HECTOR B CHAO
K W DOVERSBERGER
E A HILDERBRAND
H PYLE
J RAH
G L THOMAS

CHICAGO
R T ANDERSON
E ARGOUDELIS
J W AYERS
ROBERT J BATEMAN
J R BELVILLE
H O BERG
C BLAHNA
J H BLEVINS
J T BONK
J E BROCK
R J BRUST
E J CHLIPALA
E J CLAWSON
C H CURRY
A J CURRY JR
J F DE GROTE
EDWARD C DUMAY
T J DUNSHEATH
GUY M EFNOR
W FLOWER
H N FRIHART
R J GALITZ
ROD J GARCIA
E E GOLDBERG
R GOLDSTEIN
R A GREGORY
J A HARRINGTON
DAVID P HAYS
R J HERST
G T JACOBI
J T JAMES
R E JENSEN
R KAPLAN
HOWARD KATZ
H S KNOWLES
F A LAKOWSKI
H A LAUFFENBURGER
H E LENSE
W G LESLIE
A LOCK
HENRY A MALEC
H L MARSZALEK
L T MATZEK
H E MAY
RAYMOND J MC NAMEE
DONALD F METZ
P A MIHALKANIN
GUS B NEILL
R F NISS
D C OLIVA
G L PIGHA
MYRON D PRESTON
W G QUIST
F D REESE
K E REESE
ROBERT M SCHARDING
R M SCHILDGEN
A W SCHLUETER
D O SCHWENESSEN
C J SECHRIST
JOHN J SIADEK
R M SORIA
FRANK W STARKS
D R SZUBKA
PHILIP TANGORRA
C W N THOMPSON
J B T TURCZYNSKI
G VLACH
DANIEL G WAYNE
E L WILSON
R H YERKE

MILWAUKEE
ROBERT A BARTFELD
J A BECKER
H L BOEHLER
J C BOUTON
CHARLES J COWIE
J J ERB
J H HARRIS
DONALD E KEAST
E KOVACHIK
ROBERT LA PERRIERE
T P MAC
DAVID S MARCINIAK
R C MIERENDORF
A PAUL
RICHARD E RIEBS
H W ROY
B H SCHULTZ
K STEFANCIC
N C STORCK

NEBRASKA
ALLEN L HOLLISTER
W B JOHNSON
H A KELLER

NORTHEAST MICHIGAN
C G CURRIN
F W HARE
W J MC BRIDE
F C SMITH

ROCK RIVER VALLEY
C W ANDERSEN
C V BULLEN
R J WEIHERMAN
K B WILSON
R J ZIEHLKE

SOUTH BEND
M E BARTZ
A OPPENHEIMER
ROBERT E RAYMOND
R F SCHULTS

SOUTHEASTERN MICHIGAN
DONALD F ALEXANDER
R C DUBES
ROBERT C HOGLE
W S HOWELL
A C KELSALL
J L MC KELVIE
HENRY H MILSON
STEPHEN R REBAIN
A J ROUSSEAU
EDWARD P RUTKA
STANLEY R SCHREINER
J H ST JOHN
L M THALL
N J VEIT
E WILBURN
L WILCOX

SOUTHERN MINNESOTA
WAYNE D HARRIS
F P KLAUDA
RAY MC ROBERTS JR
R O SCHLEGELMILCH

TOLEDO
L R KLOPFENSTEIN
JOHN D LIWO

TWIN CITIES
D E ANDERSON
F B BARKER
A G BEZAT
LOWELL T COULSON
GERALD G DUFFY
R J EVANS
W J FIELD
MARK J FUNK
R D GJERTSON
D A GRITNER
RICHARD A HEISE
RONALD JOHNSON
V M JORDAL
E C JOSEPH
R R JULKOWSKI
MICHAEL A KANTAR
BERNARD KOZBERG

R P KROLL
WILLIAM C LAHTI
SAMUEL J LEWIS
J F LINDFORS
D W LOWRY
H W LUEDTKE
R L MARTIN
D F MILLER
J E NORDSTROM
H A PEDERSEN
R F RAPEL
R SCHERR
A SCHNEIDER
J SCHROEDER
G L SELLER
W F THISTUS
J M THUIRER
R D TOBIN JR
J P VAN OSS
L WERNER
GERALD I WILLIAMS

WEST MICHIGAN
D M HESLING
L M YIKE

ARIZONA
J D REID

CENTRAL TEXAS
JOHN J ALLAN 3RD
HIRAM M BROWN
L S FOUNTAIN
W A HEWLEY
JOHN D OSBORN
GARY W SHANK
R P SLAUGHTER

DALLAS
J L ALLENSWORTH
ROBERT E BAXTER
CARL J BENNING
M A BONDY
L E BOUDREAUX
W R M BURKHALTER
DAVID L CLIFTON
D R FEWER
J L FIKI
WILSON W FORTNER
W H GIANELLE
WALTER L GILL
W O GRIMES JR
J H HAMILTON
RICHARD B HASTINGS
J D E HASTY
ROBERT J JONES
A J KOELLING
J W LANGSTON
J P LESLIE
WILLIAM R LUEDERS
P MAARSCHALK
D E MC GREGOR
J W MILLER JR
H MOSS
G J MUSCHA
W C PITTS JR
THEO J POWELL
P R SANDERS
J E SANDRIDGE
C M SCHWALM
DEWITT C SEWARD 3RD
CHARLES R THOMAS
OWEN E THOMAS
L A WASHBURN
JAMES W WATTS
JOHN L WENTZ
RAYMOND E WILSON
D C WOODS

DENVER
N K ARTER
P G BAIRD
R A DINZL
ROBERT O FROLING
L L HEADRICK
D L HOWARD
LUDWIG J KECK
S J KEENE JR
RICHARD A MAHER
C S ROGERS
A A ROTHSTEIN
R C SCHEAFER
C B STOTT
R M WAINWRIGHT

EL PASO
JOHN C DUGAN
J S LAMBERT
A J RUCKS

FORT WORTH
CHARLES N BUTLER
R E LANIER
W C LIVINGSTON
BRUCE R STEFFLER

HOUSTON
ABDELKADER O AYOUB
DON L CANNON
PAUL E CARROLL
L W ERATH
J L FENTON
F D FISHEL
W J FLICKINGER
JUNIOUS B FOX
V H HAINS
V E HAYWOOD
N M HINES
PAUL P HOWLEY
G T LESTER
J T LITTLEFIELD
A D PATTON
A C SKELLIE
J S WATT

KANSAS CITY
JOHN J BREEN
JOHN I BROWN
R W BUTLER
E R ELMER
M J MC ALLISTER
M A SPIES
H L STOUT
JAY V WILCOX

ST. LOUIS
J H BOILES
WILLIAM R CUTHILL
D S CZEKANSKI
E K DILLE
LINDON F FINLEY
DONALD L GOODRUM
D R JANNING
G M JOHNSON
FRED KORTRIGHT
E J T LIMA
W C MARSH
J J MC GARRY JR
H A MIDDENDORF
KEYHAN MOLAVI
J H MUTCHEK
W L NESHEIM
RAYMOND J NEVENNER JR
THOMAS J NOLLER
C G RIEPL
M C SINN
W F SMITH JR
M STITCH
W T SUMERLIN
J R TUDOR

SHREVEPORT
P A DAVIS 2ND
JAMES H HARPER
T F HOWIE
J T MILLER
THOMAS R ROGERS

SOUTH PLAINS
R H SFACAT

TULSA
A M BREIPOHL
J E HAWKINS
L C LABARTHE
J C WESTERVELT

WICHITA
JOHN G MONFORTE

Region 6
ALAMOGORDO-HOLLOMAN
R R SAYLOR
D R SMITH

ALBUQUERQUE
P H BIRCHER
JULIUS C COBB
EDWARD L LANE
L J PADDISON
C H PURDUE
C R QUALLS
W M SUNDT
H E WALKER

FORT HUACHUCA
MICHAEL BIALKOWSKI

HAWAII
STEVEN P GOUVEIA
KATSUMI HOSOKAWA
C K KUBO
GEORGE TSUCHIDA

PHOENIX
F A APPLGATE
P C BOYD JR
M D BRAMAN
G U BRIGGS
A G COON
JOHN H DENNY
FRED E DRESTE
GLENN S EVENSEN
WILLIAM T FITCH
T J GLEICHAUF
R D GREENWAY
P H GREER
M C HALLECK
M C JENSEN
R L JONES
E A JONTRA JR
STEVEN KARLIK JR
H P KENYON JR
V I MINKEL
D B MOAN
DANIEL E NOBLE
CLIFFORD C PETERSEN
LOUIS PLOTKIN
ALLAN G RIKER
R E SAMUELSON
D H SCOFIELD

PORTLAND
M D HEIKEN
V S LAVA
PATRICK A MC GOVERN
S A D MEEK
R A POULIN
R E SHOW
J L STOLL

RICHLAND
RICHARD A BRUCE
DANIEL E COLE
M L FAUGHT
R F FURRER
R A HARVEY
E J OBLACK

SACRAMENTO
R W ANDERSON
P J DUGAL
H E FELIX
W P FREDELL
KENNETH W GIN
A F HOEFELICH
E E MARTIN
RICHARD L MCKINNEY
HURSCHELL MUSGROVE

SAN DIEGO
E M BARNES
SAMUEL BRAUN
C E BURGI
B R CORSON
M L GOLDBERG
F P HOLMAN
LEROY R HUGHES

LAWRENCE L LA ZELLE
JAMES F LEAVY
W C NAGY
W F PICKETT
ROBERT A PIERCE
ALVIN L RHINER
A L ROLLINS
ROGER A SHORACK
J P SILVERSTEIN
G L STIEHL
ROBERT J STOKELY
H B STURTEVANT JR
F VIRGADAMO
P O WILSON
W I WOOLFORD
T W WRIGHT

SAN FRANCISCO
W R ARBOTT
J R ALLGATER
J K AMUNDSON
A F AUGUSTINE
M H BAER
R N BEAN
R C BECKLUND
E L BERSHODSKY
C R BIRDSALL
R A BLOCKINGER
G BOWERS
ELVER S BOYLE
HOWARD H BRAUER
J T BROTHERS
BERTRAM M BURRIS JR
H R CALDWELL
KING S CHAN
H M CHANKIN
WILLIAM V CHRISTENSEN
C B CLARK
A D CONNER
RICHARD C CORNWELL
W P CRAINE
ALAN F CULBERTSON
W W DEVILLE
RALPH R DIMMICK
W S DRUMMOND
J E DYKES
ERIC B EDBERG
JOHN EFSTATHIOU
A P EGERMAN
H A EIMSTAD JR
G A FARUQUI
W L FINCH
DESMOND J FITZGERALD
E M FLICK
R A FOLSOM JR
L G FREDERICK
CLARENCE E FRIZZELL
R G GEBELE
J H GARD
WARREN GELLER
P J GUILLOT
BRUCE J HARRIS
J D HOFFMAN
ROBERT W HOLLIS JR
M HONDA
S O HOUCK
C M IDNANI
I M JACOBS
J JACOBS
S E JOHNSON
K H JOY
V O KELLY
W D KIDD
R C KING
T H KING
THOMAS J KING
PETER F KOPPE
R S KREISBERG
L O LANE JR
P LAZARUS
C E LEAKE
R E LEE
W R MALAUN
W MANCUSO
R E MANWARING
LAWRENCE M MARSHALL
CHARLES G MARTINACHE
RICHARD C MC COY
H J MC INTYRE
T G MOLESKI
R B MULLOCK
R B NEAL
L C NEILSON
T J NETOFF
DAVID R NEWBY
R NORMAN
G I OLIVIER
A M OPSAHL
EDWARD L PACK
FRANCIS J PASEK
JOHN PESCHON
E A POLGAR
J H RAU
KENNETH A REYNOLDS
WILBER C ROAKE
L P ROBINSON
W B RUBIN
W B SANDER
RICHARD J SEGERSTROM
V SIEGFRIED
C K SNYDER
R SPINGARN
R G STEWART
JANICE T THOMAS
CARLTON W THOMS
D S TOOMB

C J VAN LEEUWEN
V J VAN VELZER
F R VAN WAGNER
F E VEHN
K J VIERAITIS
W H WAHRAHAFTIG
P A WALLACE
O R WELCH
J P WELCH JR
HAROLD C WERNER
H E WESTGATE
FRANK K B WHEELER
S WIESNER
J L WILLOWS
W L WISE
KWANG HO YIM
G W YOUNG

SEATTLE
JOHN M ALLEN
HERBERT W BETHEL
W E CURRIE
M H BAER
R E HART
A F HIXENBAUGH
ERNEST R KARCHER
AUGUST T KARLSON
L KOSENKRANIUS
R KOUCHI
GALE H MC FARLAND
PAUL R MEASEL
J W MICKEL
DAVID M MOOSE
R E PATRICELLI
P S THOMAS
ALEXANDER M UNWIN

TUCSON
DIMITRI KECECTOGLU
H KOERNER
RICHARD E KUTZ
V M LOCKWOOD
A A ST GERMAIN

UTAH
DAVID J RAY
W G ROBINSON
W E STEINBURG

LOS ANGELES COUNCIL SECTIONS
ANTELOPE VALLEY
ROBERT S DIAMOND
JAN M HOWELL

BUENAVENTURA
F W BAUMGARTNER
F B BIAN
ROY E DEHM
C M DE WITT 3RD
J L GLASS
E A KOHLER
P PERINGER
A R REED
L L SLATTEN

CHINA LAKE
V C BESANCON
B M DOVER
FREDERICK A JONASSEN
WILLIAM A MARSH

FOOTHILL
G M ELLIS
M M FALK
J F GRAY
B W GRIER
C F HORNE
C R HUGHART
DONALD J KERINS
VIRGIL L LOVITT
R R MOORE
M A PATTERSON
M L SANDELL
G SHIMADA
G W WOOD
C W YOUNG

MET. LOS ANGELES
H E ANDERSON
SPENCER CHAM
LAWRENCE F FINKELMAN
G HENSEL
I ISRAELI
E Y KAMEDA
M H KENT
J KUSHNER
D N PENNYPACKER
D N PLUMMER
S N PORTER
D M PRO
W M QUINN
NORMAN A SCHWARTZ
WALTON WILLIAMS
G W YIM
S ZEITLIN
L J ZOTTARELLI

ORANGE COUNTY
M F ADAM
K W ANDERSON
D J ANTHONY
ROBERT E BANNICK
VERNON W BATEMAN
J M BEEKMAN
R B BONNEY
ROY B CARPENTER JR
F CASSETTARI
C F DEININGER
JOHN J DELAVA
P A DIEDERICH
JOHN R DONAN
J J DUFFY
A EPP JR
D C FLEMING
J G FOUNTAIN
A FURSA
SYDNEY GLAZER
R W HARDER
IVAR M HOLLIDAY
JOHN J HORAN
N L HUG
DAVID R HUI
K ICHIKAWA
T W JARMIE
JEFF L KERSEY JR
E G KIMME
PAUL B KING
STANLEY LAUT
C D MARTIN
JAMES L MAYBELL
L B MC CASLIN
C W MC LAUGHLIN
C W MILLER
JEAN R MILLER
W MORTON
J R NORIEGA
THOMAS R PANNECK
RALPH RANALLI
ROBERT R REEDS
WILLIAM A ROUSEY
W G RUNGATTIS JR
K N SARGENT
HERBERT S SCHEFFLER
L J SCHNEIDER
ERNEST A SCHWOBEDA
BRUCE E SHARP
L L SHAW JR
R C SHAW
R E SWISTOK
J E TYRRELL
E W UMLAUF
J E VALSTAR

SAN FERNANDO VALLEY
EDWARD J ALTHAUS
LEO A ARNDT
M L ATKINSON
H J BARR
I BAZOVSKY
ROBERT P BOROFKA
T N BOWERS
GEORGE M BOYD
C W BRANDS
DANIEL F BROSNAN
J E BROWDER
JAMES J BURROWS
J W CALER
MILTON CHERRY
E D COCHRAN
M J CONNOLLY
ALBERT D DORNFEST
D EDGERTON JR
D J FINN
H M GORDY
ZANTINE GREENWOOD
S J GROSSMAN
S J GROSSMAN
H R HAID
W H HARRISON
P L HILLMAN
S L HIRSCH
WILLIAM J HODGES
S J HORNYAK
W R HUTCHERSON
HERBERT G JACKS
R H JOE
J J JONES
G F KUJAWSKI

W X LAMB
RALPH A LAMM
G R LANE
ALFRED LEVY
KIRKE W MARSH
L A MATONAK
J C MC ADAM
D R MEYER
C MICHAEL
K F MORICK
MARY F NOLLMAN
WAYNE C OVERTON
D M PAYNE
I QUART
SAMUEL M RICE
D A RIESS
D R RINGOLD
ALBERT L ROSENBERG JR
D K RUBIN
HAROLD L SANDER JR
P R SIGNORELLI
STEPHEN G SOLLOCK
D SWISHER
G R VAN HOOORDE
JOHN VISSER
J M WATSON
E M WEINSTEIN
HANCE S WOOLEVER
S ZWASS

SAN GABRIEL VALLEY
WILBERT B BARTEL
C W BOICE JR
D L BRODERICK
D E BROWN
R E CLINE
MELVIN L COHEN
K C EVANS
EDWARD N GORDON
W P HART
R C HAWES
R D JABLONSKY
L P JONES
J KLIMBERG
WARREN S LINCOLN
J C RADCLIFFE
E M WALKEY

SANTA BARBARA
PAUL R ADAMS
L O CRISS
C WALTER JOHNSON
CARL A NOSS
F X REMOND
C N STOLL

SANTA MONICA BAY
A P ALBRECHT
ROBERT ARANY
A AVIZIENIS
BENJAMIN BARNETT
H BRUCE BATTERY
D E BEECHER
ROBERT A BELMONT
B BERMAN
C R DERNHAM
I DOSHAY
J R FISHER
A H GACA
A L GICHTIN
A L GOZZI
R W GRANTHAM
W A HARTMANN JR
B HATHAWAY
C D HENSON
JOHN C KINZEL
G H KLEIN
M B KLINE
G F LAULE
S N LEHR
Z MILUNAS
S C MORRISON
GEORGE V NOLDE
A M OKUN
W H PENDLETON
V J PETRUSIS
L B RAHM
A C REED
R A RODRIGUEZ
H G ROMIG
ROBERT RUDICH
JEFFREY B SCHNEIDER
SAM A SIMICH
H H STERN
G W SWANSON
G S SZEKELY
R C TERZIAN
H B WATERMAN
R A WESTLAND
ALBERT A ZIMMERMAN

SOUTH BAY HARBOR
E L AITON
A ANDERMAN
ROBERT S BABIN
ROBERT E BELTER
JOHN A BORDERS
R H CARPENTER
R J CARY JR
PAULO S CASTILLO JR
J A CANNOR
R R DYE
F E ENRIGHT
JACK E FORT
W O GEISERT
S D GERBER
J HILMAN
A J HOFFMAN
B T IWATA
A G IZUEL
R A KIRKMAN
M F KRUPP
L K LEE
RAYMOND O LORENZ
S W MALASKY
B J MC COMB
D E MC CORMAC
D T MC RUER
W M MICHITSCH
H E MORRISON
R H MYERS
CLIFFORD M RYERSON
G L SANDBERG
L L SCHNEIDER
S SHOHARA
WILLIAM R SLAGLE
MORTON J SMITH
B N THEALL
E WADE
S L WEBSTER
H K WEISS
CHARLES A WILEY
K L WONG
D J YOUNG

VANDENBURG
JOHN A TRUEMAN
L R WHITE

SANTA BARBARA
PAUL R ADAMS
L O CRISS
C WALTER JOHNSON
CARL A NOSS
F X REMOND
C N STOLL

BAY OF QUINTE
G T DAVIS
R L SMITH

CANADIAN ATLANTIC
R J HAMILTON

KITCHENER-WATERLOO
F D LFESON

LONDON
RONALD A BERGERON
H R MC GEE

MONTREAL
YVON P NADEAU
GUY J BEAULICU
J L L BOULET
D A BOUSFIELD
D J CLARK
P CLARK
R A DINGWALL
L DUMAS
ROBERT P GAGNON
R F GENTNER
G B HENDRICK
PER J JORGENSEN
T D KIANG
J H LEGERE
GAIL MAC DONALD
F MOLLER
S E PINNELL
W A RAWLINS
R W REED
L F RUGGINS
J M SAUCHUK
I P WAJS

NIAGARA INTERNATIONAL
JOHN A KRUPPER
JOHN F MC PHAIL

OTTAWA
J A AGNEW
JOHN B DE MERCADO
G GLINSKI
R R HOGE
J R KRUIUS
K R PAUL
CHARLES D QUICK
C M REARDON
G C ROWE
C I SOUCY
J E TIBBETT

QUEBEC
A L LORTIE
W E SWITZER
K H ZEMENT

TORONTO
JOAN A HALL
F J HEATH
W HRYHORJIW
DONNA M IVEY
K C LYONS
J MC ATEER
JAMES B PUSKAS
YOSHITADO RYUZAKI
G N SEMAN
A SIMONI
S V SOANES
H L STROUD
E J SWAIN
P YACHIMEC

WESTERN CANADA COUNCIL SECTIONS
NORTHERN ALBERTA
G BIDULOCK
JOSEPH M GREEN

REGINA
R BILLINFIN
H KALDOR

VANCOUVER
R BARTHOLOMEW
J B CLOYDON
P W WADDINGTON

WINNIPEG
L A BATEMAN
A A BURROW
W A R JOHNSTON
M P MUSICK

BENELUX
P BOUCHIER
Y BOXMA
W B BROUWER
G G CANTRAINE
J L DE KERF
MAURICE C P DESIRANT
S DUINKER
L ENSING
TRULS R FALLET
M GROENENBOOM
H H HANNESEN
Y V HECO
H H HEEROMA
CHARLES J MEDART
ADRIAAN PENNING
D C SCHERING
JACOBUS STOLK
A J VANDENMEERSCHE

LEENDERT VAN ROOIJ
J C VAN STAVEREN
EWOUD J VAN WEEL
D H VAN ZUYLEN
C J D M VERHAGEN
RONNY VERLET
H VIGNERON
J VOROBETCHIK
JAMES R WEINER
C W J WILMERING
P ZIJLSTRA

DENMARK

OLE T ANDERSEN
C L CHRISTENSEN
ERIK ELNEGAARD
KNUD HOLST
H ISAKSSON
FINN JENSEN
BENNY M LARSEN
B AAGAARD NIELSEN
OTTO RING

EGYPT

ABDEL-LATIF I AHMED

FRANCE

V A ALTOVSKY
JACQUES A AMANN
PHILIPPE A ANGELLE
R L ARNAL
GEORGES ATTALI
J AURICOSTE
J P BARRET
J M BODEZ
ROBERT COHEN
CHARLES A DAVID
M DELATTRE
M S DENOUETTE
M Y L DEPEYROT
J D DESCHAMPS
J DRAPIER
J L DUPREZ
L E NAUD
HERBERT H ERNYEI
LOUIS J FECHANT
J GAGNIERE
P GANDIN
J F GASCHI
PIERRE GENKIN
P A GRIVET
MICHEL KARSKY
E LABIN
J P LABROUSSE
A LAURENS
L J LIBOIS
W MAZEL
P P NAMIAN
F F NCUVION
A OUDARD
JEAN C PATIN
J C PELPEL
M J H PONTE
J H ROBIÉUX
M TESSIER

GERMANY (WEST)

C W BUSCH
GOTTFRIED FARWER
ROLF G FRITZ
HELMUT GEISSLER
J HENRICI
G M HERRMANN
H HORN
E L KOCH
H KUHNKE
W NESTEL
W H SCHOENFELD
GUNTER G WEBER

ISRAEL

D AVIVI
DAVID BRONSTEIN
E CASPI
M DISHON
AMNON A GAASH
U GALIL
J GILAT
SHLOMO KARNIEL
LEVY KATZIR
M J RONEN
S SAMUEL
JOSEPH K SELLA
JEDIDIAH SHAMIR
M S SIMHI
CHARLES B THEEDAR

MIDDLE & SOUTH ITALY

M BRUNELLI
R GALLETTI
G GOMMELLINI
RENATO KOCH
T LEARDINI
U PIZZARELLI
C ROMAGNOLI
U TIBERIO

NORTH ITALY

ETTORE ACCENTI
ALESSANDRO Q ALBERIGI
LUIGI BONAVOGLIA
G BONGHI
A BRAGA
F E CAPOCACCIA
GIORGIO DE LOTTO
A D DEROSSI
G DE VITO
C EGIDI
VIRGILIO FLORIANI
ENRICO GIANNINI-MOCHI
D M GUARRACINO
PIERCARLO PALERMO
G QUAZZA
AUGUSTO RIMINI
P SCHIAFFINO
P SILLANO
GIANFRANCO TOMMAZZOLI
A VERGANI
C ZANELLI
A ZANINI

NORWAY

E KULVIK
E MACK
K R MEISINGSET
K E SORBYE
O J TVEIT

SPAIN

RICARDO ALVAREZ-ISASI
JUAN I ASIN
J A DE ARTIGAS SANZ
VALENTIN M PARRA
PEDRO SANZ GUTIERREZ
R T SEGOVIA

SWEDEN

JAN I H ASKNE
P J BENGTSSON
E H J BRAUNE
CARL D DAHLMAN
A V EHNBERG
A L ELFVING
S G FAGERLIND
S G GERTZELL
S G GRANLER
G JANCKE
L KARLSTEDT
K KATZEFF
T LAURENT
G LINDSTROM
L E LOFGREN
A LUNDQVIST
E G MALMLOW
G A MARKESJQ
L F NORLIN
A J K OLSSON
O PERERS
O RAMSKOLD
HOLGER M RONQUIST
S SJOGREN
P G SOLDERS
B STJERNBERG
ARNE SUNDQUIST
LARS G E VIRSBERG
N GUNNAR WEDFII

SWITZERLAND

A E BACHMANN
T CELIO
J L DURSO
H A ELSNER
HANS G FIENT
M P FORRER
HEINZ H FREY
G GUANELLA
A L KLEIN
GUIDO J LANG
MAX J MILZ
MARCEL E MUSSARD

FRANCOIS RIOLO
I SCHERRER
M STRUTT
H E THIEMANN
WILLEM G VAN DER TOUW
R P WELLINGER
GILBERT J ZINSMEISTER

UNITED KINGDOM &
REPUBLIC OF IRELAND

D ASHBY
L F BENNETT
JOSE M BRITO-INFANTE
P CARMICHAEL
N J CLARK
A J CLARKE
C H CROCKER
W DEAS
C S DEN BRINKER
W B DILLON
G W A DUMMER
STEPHEN FORTE
I G E GILROY
K E HARRIS
E LAVERICK
A N LAWSON
D R MC CALL
M A MILLWARD
N D MORRISON
R H MURPHY
B D NELLIST
ROBERT F OXLEY
ANTHONY N PARSONS
R W PRINGLE
H B RANTZEN
S P ROSE
H G K SCHOTTEN
Z O SEDMIDUBSKY
J T SHEPHERD
J E G WILKS
K F WILLIAMS

NO ESTABLISHED SECTION

J BLECHA
ANTONI CZECHOWSKI
V GOVIADINOV
F W GUNDLACH
M I JOKINIEMI
GARABED KODJAIAN
J KUBEC
K I MARTJUSHOV
M NOVAK
J J POHJANPALO
L SZANTO
J VIRANT
J D VOCOLIDES

Region 9

ARGENTINA

ANTONIO LOZANO CONEJERO
A L GOLDMAN
ANIBAL TUFRO

MEXICO

J A ESTEVA
RENE FERNANDEZNINO
EMILIO R GARCIA
HORACIO A IRETA
ALFONSO SANORES E
J C SEELIGER

PERU

E J BARRAGAN-SCHENONE
NAIM A BENAVENTE
MARCOS YOSHIDA

PUERTO RICO & VIRGIN
ISLANDS

E PUIGDCLLERS JR

RIO DE JANEIRO

NICHOLAS BROOKING
M F LIPPINCOTT

SAO PAULO

F DE MENDONCA
Y S LEE
F L SHERMAN

VENEZUELAN

R L IL GRANDE
MANUEL HALPERNFLINT
FRANCISCO LOPEZ-PASTOR

NO ESTABLISHED SECTION

DAVID R MARSHALL

Region 10

NEW ZEALAND

S WOLKOWICZ

TOKYO

EIZO ABE
OSAMU ABE
MORIO AKIYAMA
TADAHIKO AKIYAMA
SABURE AOI
YOSHIMASA AOKI
KIYOSHIGE ECHIKAWA
YOSHIKAZU FUJINO
KOJI HIROSE
MASAYOSHI HOSHINA
KOICHI HOSOKAWA
MASARU IBUKA
MASAO IDE
YOSHIO IHARA
TOSHIYA INOUE
YASUO ISHIDA
KUNIZO IWAMOTO
NOBORU IZEKI
T KAWANO
HISAO KIMURA
MATSUNAGA KINASE
SHUNKICHI KISAKA
DAIJIRO KOBAYASHI
SATARO KONNO
TETSUJI KOTANI
TOSHIRO KUMAGAI
GENZABURO KURATSHI
K KURODA
MITSUO KUSANO
SHIGEYA KUWABARA
KUNIO MANO
TAKENOBU MATSUMURA
MASAO MATSUI
T MATSUYUKI
FUMIO MINOZUMA
M MITA
KOHICHI MIYAJI
KEITARO MORITA
TOKIO MUTO
M NAKAGAMI
F NAKAHARA
T NAKAHARA
JIRO NAKAMURA
OSAMU NISHINO
YASUJIRO NIWA
NOBUO NUMASAKI
M NUMOTO
SUKIRO OBATA
NORIOMI OCHIAI
NAOYUKI OGASAWARA
SHINCHIRO OGAWA
K OHASHI
TAKASHI OHOKA
HIROSHI OHWADANO
KENZO OKUDA
KEN-ICHI OKAWI
MASAFUMI SASAKI
TOSHIO SAWADA
T SAWAMURA
N SAWAZAKI
TAKED SEKI
I SOMEYA
CHOSUKE SUGI
IKUO TAKEDA
Y TAKEDA
OKADA TAKED
IKUO TANAKA
KATSUSHI TANAKA
FUSAO TANIGUCHI
HIROTSUGU TAOKA
KAZUTO TOMIDA
MIYAJI TOMIDA
HAJIME YAMAGUCHI

MASARU YAMANO
TAKASHI YAMAZAKI
DAIGORO YASUKAWA
TSUGUO YOSHIDA
TAKEO YOSHINO

OVERSEAS MILITARY

A B ADKINS
F A AUSTIN
THOMAS D FLANNERY
STEVEN C GARCIA
J O HARDY
A B ROBSON

NO ESTABLISHED SECTION

AHMED H ANTAR
L T BURROWS
R J C DAVIES
ANGUS FOWLER
G G HALL
AUGUSTINE P KALANZI
WON KIM
MANGHO J KIRPALANI
OWEN MACE
P C MANOHARAN
JAMES B MC DONNELL
MALAY R MUKERJEE
V S NAZIR AHMED
K J RAO
A M RAZOVSKY
JAMES B RUDD
S C VICHAI
A H WARDALE
P E WESTON