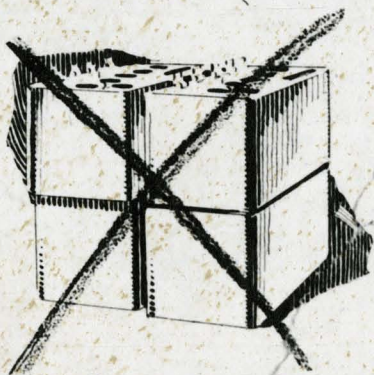


1924

WILLIAM DUBILIER
339 GARDEN ROAD
PALM BEACH, FLORIDA 33480

**You don't
need
"B" batteries,**



1st Battery eliminator

1932

YOU DON'T NEED "B" BATTERIES

THE SUPER-DUCON

PATENT PENDING

SINCE the invention of the vacuum tube, the "B" or high voltage battery has been one of the drawbacks to its use. In the early days, replacements were difficult to secure and usually had to be assembled by the enthusiast from pocket flashlight batteries, which often as not lost their best qualities when the soldering iron was used in connecting them.

Today, the drawback is not the difficulty of replacement but in the *cost* of replacement. In addition to the cost factor involved, "B" batteries have a tendency to become noisy in the latter period of their life and are the cause of much unsatisfactory reception.

Relieving the necessity for "B" batteries has had the attention of engineers for many years and among those who have labored to create a satisfactory substitute have been the engineers of the Dubilier Condenser & Radio Corporation.

For months these men have experimented to produce a compact, thoroughly dependable unit which would give entirely satisfactory results, and,

Just Plug in and

Depend on **DUBILIER**

1924

YOU DON'T NEED "B" BATTERIES

once for all, make the use of "B" batteries unnecessary. The SUPER-DUCON stands as the result.

The SUPER-DUCON is a perfected instrument utilizing the power available from any lamp socket by converting it into various voltages used in radio receivers. Once hooked up no further attention is necessary.

Any type of set may be used with the SUPER-DUCON. You don't need a special circuit, and the tubes you are now using will give even better results when the SUPER-DUCON is used. Just connect *any* radio receiver to one side of the SUPER-DUCON and *any* light socket to the other.

The SUPER-DUCON is perfectly safe to use—and for users of 201-A or 301-A tubes even the



INPUT SIDE

Just Plug in and

Depend on DUBILIER

YOU DON'T NEED "B" BATTERIES

danger of accidental burn-outs through making the wrong connections has been prevented through the use of a current limiting provision.

The designers of the SUPER-DUCON have taken special pains to make appearance an important qualification. An attractive, enameled metal case of pleasing proportions, size 6 x 7 x 9 contains the entire arrangement—barely the space required by four standard 22½ "B" batteries. A convenient insulating panel supports four binding posts from which may be drawn 22½, 45, and 90 volts, either separately or in combination.



OUTPUT SIDE

Just Plug in and

Depend on **DUBILIER**

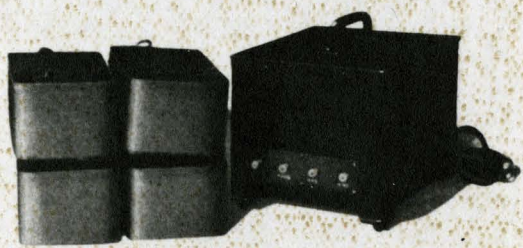
1924

YOU DON'T NEED "B" BATTERIES

This is an important feature for many receivers require three different "B" voltages for best operation. For instance, a receiver consisting of a radio frequency amplifier detector and audio amplifier would probably require 45 volts on the radio amplifier, 22½ volts on the detector and 90 on the audio amplifier.

In use the SUPER-DUCON seems to give a receiver new life; this is because the current flow to the tubes is steady and does not vary or decline. Your "B" power will always be 'up' with a SUPER-DUCON in the circuit.

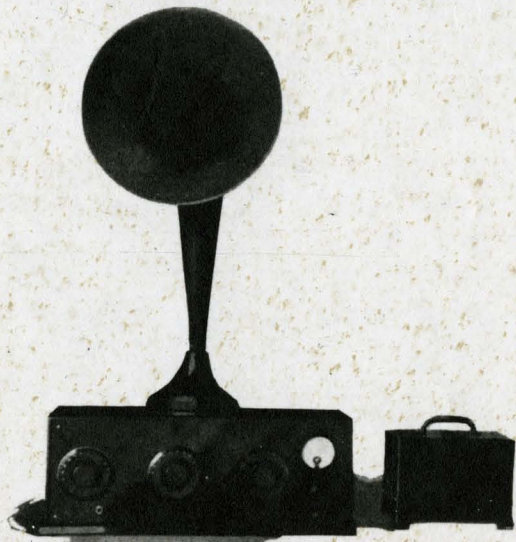
The SUPER-DUCON is neither a new type of battery, nor a battery charger, it does not need recharging or replacement—you buy it once and it will supply your set for years with smooth, steady current at a constant voltage—which means peak results whenever you turn the switch.



COMPARED WITH "B" BATTERIES

Just Plug in and
Depend on DUBILIER

YOU DON'T NEED "B" BATTERIES.



*COMPARED WITH RECEIVER
AND LOUD SPEAKER*

E. G. YERG PRINTING CO., INC., NEW YORK