

Westinghouse Electric & Manufacturing Company, Pittsburg, Pa.

ADDRESS ALL COMMUNICATIONS TO
THE COMPANY AND REFER
TO THESE INITIALS.....

April 16, 1908.

2502

G. A. W. FILE
4/17/08

Mr. George H. Wardlaw,
American Institute Elec. Engrs.,
#33 West 39th St., New York, N.Y.

Dear Sir:-

Enclosed please find new drawings for Sketches
1 to 7, to illustrate my paper presented before the
Philadelphia Branch of the American Institute. I hope
these will be satisfactory.

Very truly yours,

B. B. Lamm

BGL/EML

To engraver, Wms. 4/17/08

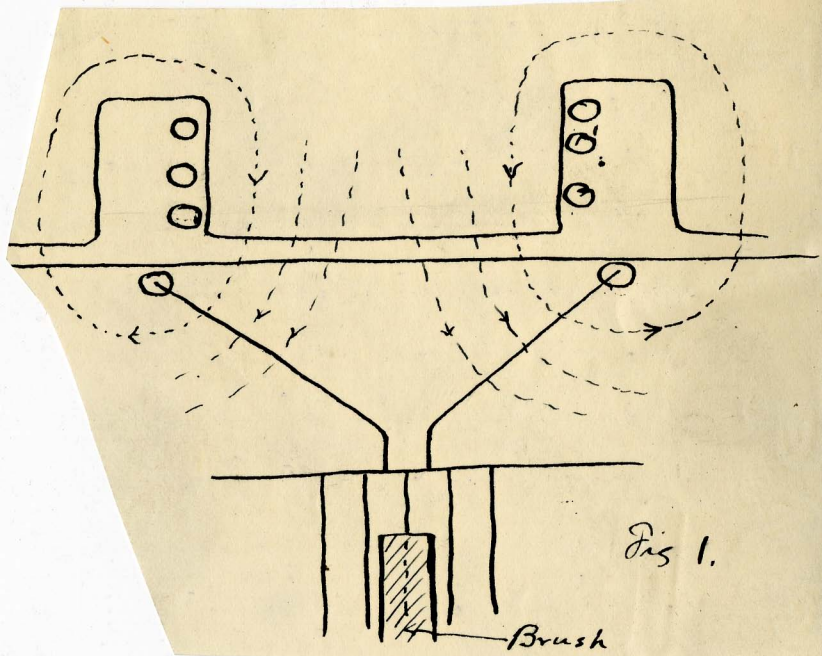


Fig 1.

Brush

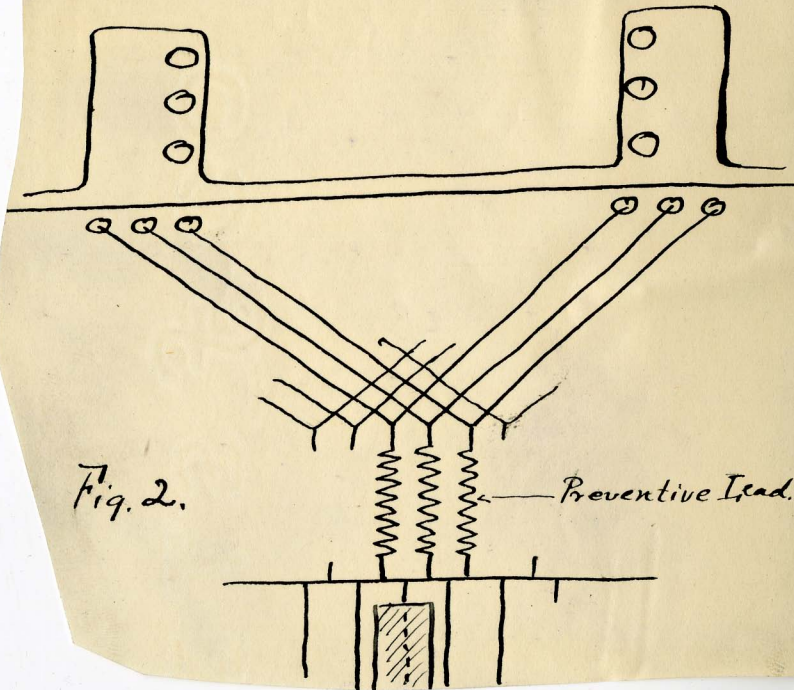
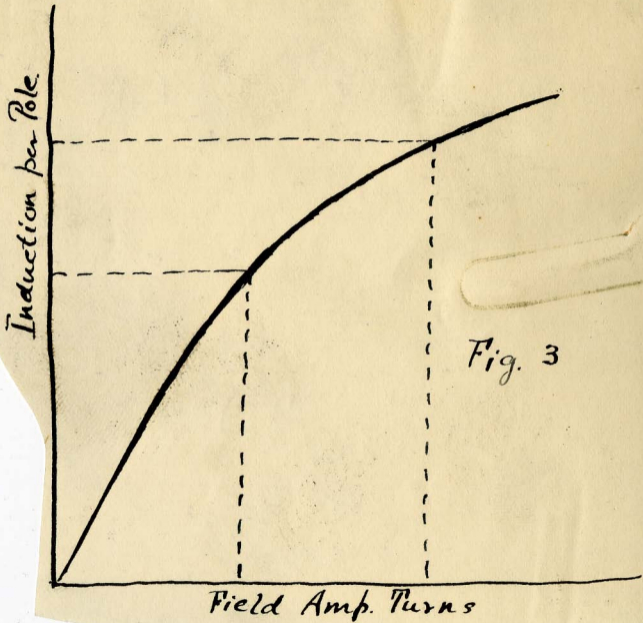


Fig. 2.

Preventive Lead.



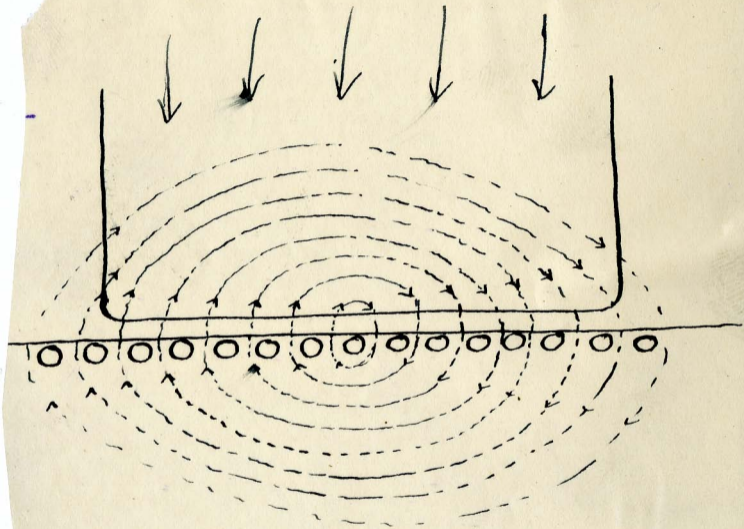


Fig. 4.

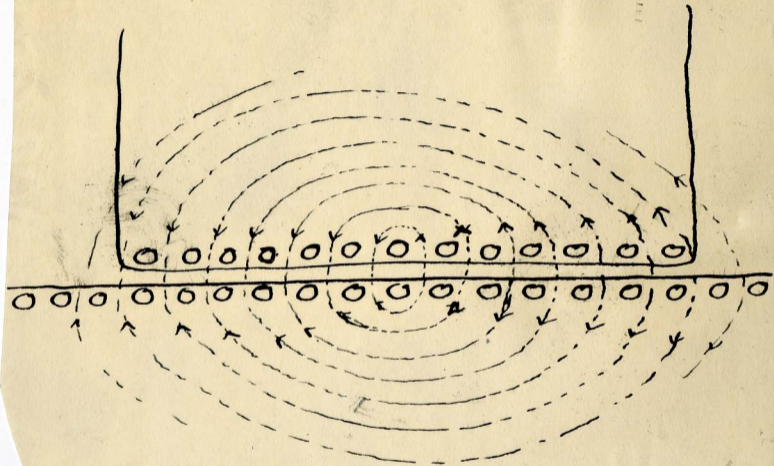


Fig. 5:

S/S

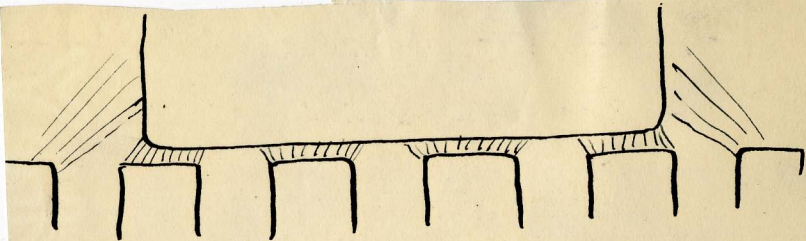
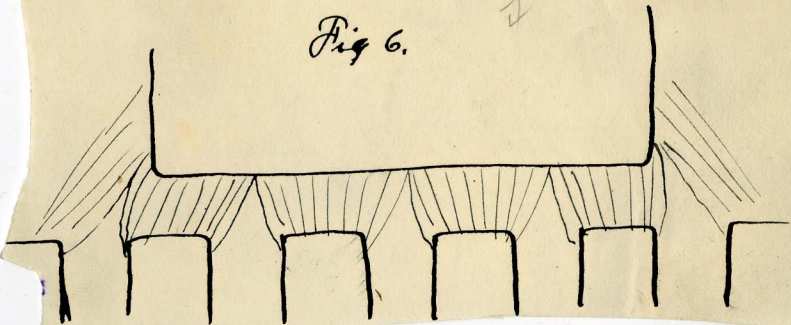


Fig 6.

$\frac{3}{4}$



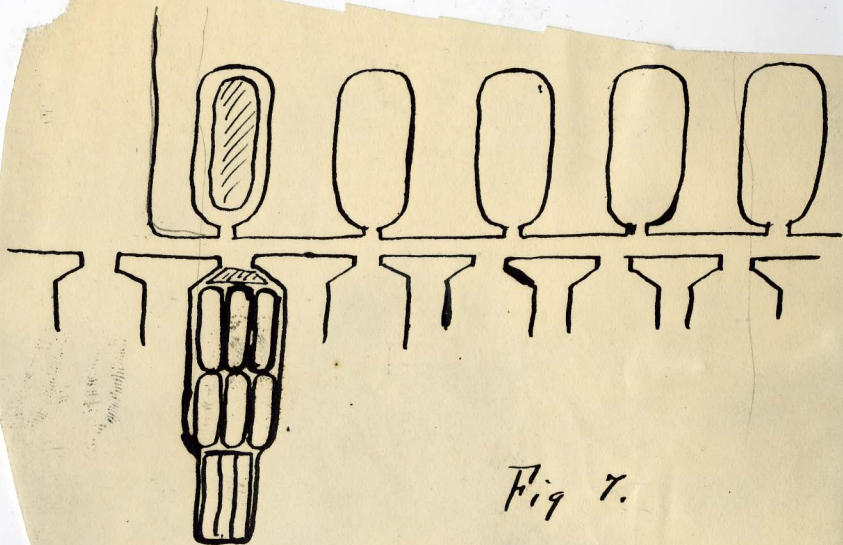


Fig 7.