

Preface

For each major IBM data processing system, publications useful in planning for, programming, installing and operating that system are assembled in a *system bibliography*.

Organization

This system bibliography has four parts.

In Part 1, the publications are clustered by subject and sorted by keywords in the titles.

Part 2 chiefly contains abstracts describing the items listed in Part 1.

Part 3 lists, in order-number sequence, all items clustered by subject in Part 1.

Part 4 consists of graphic library charts that help to show the associations among publications.

Note: *Order numbers are sequenced by second character. The first character (G, S, or L) is the use key. (See "Identification of Availability.")*

Subject Identification and Filing

The file number (e.g., 1800-36) appearing on many publications listed in this bibliography identifies the system in the prefix (1800) and the subject code in the suffix (36, i.e., control program).

Prefix of File Number

Publications associated with two or three system libraries identify them in the prefix (such as 1130/1800). When manuals apply to *more* than three libraries, the system number isn't used. These few and more general publications have component numbers, or GENL, in the prefix: component number(s) if the manual concerns one or two components; or GENL if the manual concerns more than two (or no specific) components.

Subject Code

The *subject code* is a two-digit number standing for a subject, such as 25 for FORTRAN or 15 for physical planning manuals and templates. (Part 1 of each bibliography starts with a standard index of subject codes and their definitions.)

File numbers with "system" subject codes 00 through 40 are printed on publications, as an aid in filing manuals in any library which is organized by system and subject. Codes 00 through 40, moreover, are used in subscribing to SLSS (System Library Subscription Service).

Codes above 40 don't appear on publications and are not used for SLSS, but are assigned as a simple way of classifying all items in bibliographies.

Part 1

In Part 1, the subject code listing, *one* code is assigned to a publication. Items within the cluster for

each subject are listed in sequence. Sequencing for manuals is alphameric, by the most apparent *keywords* in the titles.

When one publication applies to more than one programming system, it is repeated in each applicable listing.

Part 2

Before ordering copies of publications, check the abstract in Part 2 to be sure that your installation will require the information. Abstracts are listed in order-number sequence. (See note.)

Part 3

Part 3 enables you to easily find any order number, for reasons such as to see whether a number is included in the bibliography or what subject code is assigned to it, or to learn what edition(s) are current and whether any TNLS have been issued since the latest edition.

Part 4

The library charts are a graphic aid for quickly identifying manuals that should be in a basic, individual library for a specific system.

Order Number

The publication order number identifies various facts about a publication, including:

Identification of Availability

The first character of the order number is the use key, which governs the availability of the document. Use key G means that the item is available to customers, through the IBM representative, without charge for quantities that meet normal requirements. Use key S means that the item is for sale through IBM branch offices. Use key L means that the item is available only to licensees for the IBM Program Product or other licensed program.

Identification of Logic Manuals

Publications that explain program logic have a "Y" as the second character of the order number: e.g., SF26-1234-5. (They also include "Program Logic Manual," "System Manual," or similar wording in the title.) Such manuals are intended for use by persons involved in program support or alteration of the program design; they are not required for normal use or operation of the program, and are available under SLSS by order-number subscription only (as are microfiche and other supplementary information).

Identification of Microfiche

An alphabetic character in the third position of an order number identifies a document on microfiche: e.g., S2C 0-0301 or GJD 1-5432-1.

Extra Symbols (Flags)

Maximum case: **G310-0001-3#*

or: **SC20-2000-2#+

A double asterisk preceding the order number indicates either a change in the publication (such as a new edition) or a new item.

When more than one edition of a publication is current, the edition-suffix is followed by a number sign (#).

A single asterisk following the order number indicates an item for IBM World Trade use only.

A plus sign following the order number indicates that the item is for U.S.A. use only.

Updating

To eliminate unnecessary delays in keeping publications current, changes and additions to them are distributed most quickly in the form of Technical Newsletters.

When the pages released in a TNL are inserted in the manual to which it applies, the base publication is brought up to date. The next reprint of the base publication incorporates the TNLs, and is assigned

the next higher suffix number, but need not be ordered as it is the same as any prior edition indicated as also current.

TNL Masthead

The masthead of the TNL cover page includes the order number of the base publication to which the TNL applies. All previously-issued TNLs are listed in the masthead so that you may verify receipt of all changes.

References

Specialized bibliographies and other supplemental items are listed in Part 1 under appropriate subject codes. Check the following items:

Installation Management Bibliography (GF20-8172), subject code 00.

Bibliographies of application publications that pertain to specific industries (*Public Utilities, Finance, State and Local Government, Insurance* and others), subject code 60 in "Licensed Application Programs."

IBM Data Processing Glossary (GC20-1699) and *IBM Marketing Publications KWIC Indexes*, code 85 in the table of contents heading, "Other Supplementary Information."

Contents

Part 1. Subject Code Listings	iv
Subject Code Definitions	iv
Machines	1
C/PT (IBM 1800 Card/Paper Tape Programming System)	2
MPX (IBM 1800 Multiprogramming Executive Operating System)	2
TSX (IBM 1800 Time-Sharing Executive System)	3
Licensed Programs (subject codes 20 through 40)	3
Licensed Application Programs	4
Type II Programs	5
Other Supplementary Information	
Data Processing – Introductory Manuals and Texts	5
Education – Course Catalogs	6
Installation Forms and Supplies	6
EWS (Early Warning System)	6
Type I Program Listings (microfiche)	6
Part 2. Abstracts	7
New Abstracts	18
Part 3. Current Editions by Order Number	20.1
Part 4. Library Charts	21

Part 1. Subject Code Listings

SUBJECT CODE DEFINITIONS – NUMERICAL INDEX

00 General System Information (basic System Summary, Bibliographies, all Configurators)
 01 Machine System (CPU, Models, Channels, Console)
 02 Card Readers and/or Punches, Control Units
 03 Printers, Control Units
 04 OCR, MCR (Optical/Magnetic Character Readers), Control Units
 05 Magnetic Tape Units, Control Units
 06 Display Equipment
 07 DASD (Direct Access Storage Devices), Control Units
 08 Other Devices, Control Units
 09 Communications Devices
 10 Auxiliary Equipment (devices normally off-line)
 13 Special Features Information
 14 Custom Features and Supporting Programs
 15 Physical Planning Information
 20 Programming Systems – General Information
 21 Assembler
 22 APL
 23 BASIC
 24 COBOL
 25 FORTRAN
 26 ALGOL
 28 RPG, RPG II
 29 PL/I
 30 Access Methods, Data Management, Storage/Communications Control Programs
 31 Support Programs (e.g., Link Edit, Loader)
 32 Utilities
 33 Sort/Merge
 34 System Planning, Generation, Installation, SMF; Storage or Performance Estimates, Release Guides
 35 Emulation, Simulation (catalogued by host system)
 36 Control Program (e.g., Supervisor, JCL, IPL, Job Management, Data Areas, Checkpoint/Restart)
 37 RAS (Reliability, Availability, Serviceability): Testing, Service Aids, Problem Determination
 38 Remote Job Entry (RJE, CRJE, RAX, CRBE,...)
 39 Time Sharing, Interactive Facilities
 40 System Operation (e.g., messages & codes)
 50 DB/DC (CICS, IMS, GIS, DL/I, ...)
 60 Industries – General (industry bibliographies, etc.)
 — Airlines (see Transportation)
 62 Consultants
 63 Distribution (e.g., apparel, food, agribusiness, hotels)
 64 Education, Libraries
 65 Engineering
 67 Finance, Securities, Real Estate
 69 Government, Federal
 70 Government, State and Local
 71 Insurance
 72 Manufacturing
 73 Media
 74 Health
 75 Process (e.g., forest products, petroleum, paint, textiles)
 76 Public Utilities
 — Securities (see Finance)
 78 Transportation
 79 Cross-Industry (see also 81–83 for selections)
 —
 81 Cross-Industry – Management, Planning, Project Control
 82 Cross-Industry – Mathematics and Science
 83 Cross-Industry – Simulation
 85 Data Processing – Introductory Manuals and Texts
 87 Education – Course Catalogs
 89 Installation Forms and Supplies
 95 EWS (Early Warning System)
 97 PTF (Program Temporary Fix) Listings
 99 SCP and Type I Program Listings

ALPHABETICAL CODE INDEX

Access Methods 30
 Airlines 78
 ALGOL 26
 APG/7 60
 APL 22, 82
 Assembler 21

 BASIC 23
 Bibliographies 00, 60

 Card Equipment 02
 Channels 01
 Checkpoint/Restart 36
 COBOL 24
 Codes, system 40
 Communications 09, 30
 Configurators 00
 Consoles 01
 Construction 72
 Consultants 62
 Control Program 36, 30
 Course Catalogs 87
 CPU 01
 Cross-Industry 79–83
 Custom Features 14

 DASD 07, 30
 Data Areas 36
 Data Management 30
 DB/DC 50
 Diskette 08, 30
 Display 06, 30
 Distribution Industries 63

 Education 64, 87
 Emulation 35
 Engineering 65
 EWS 95

 Finance Industry 67
 Forms 89
 FORTRAN 25

 General Information 00, 20, 60
 Government 69, 70
 Graphics 06, 30

 Health 74
 Hotels, Motels 63

 Information Retrieval 79
 Insurance 71
 I/O Control Programs 30
 IPL 36

 JCL 36
 Job Management 36

 Legal 62

ALPHABETICAL CODE INDEX

Libraries 64
 Link Edit 31
 Loader 31

 Magnetic Tape 05, 30
 Manufacturing 72
 Mass Storage 07, 30
 Mathematics 82, 22
 MCR 04, 30
 Media 73
 Medical 74
 Messages, system 40

 OCR 04, 30
 Operation, system 40

 Performance Estimates 34
 Physical Planning 15
 Planning 34, 30, 00, 81
 PL/I 29
 Printers 03
 Problem Determination 37
 Process Industries 75
 Project Control 81
 PRPQ 20-83
 PSHRPQ 14
 PTF 97
 Public Utilities 76

 RAS 37
 Real Estate 67
 Release Guides 34
 Remote Job Entry 38
 RPG 28
 RPQ 14

 SCP Listings 99
 Securities 67
 Service Aids 37
 Simulation 35, 83
 SMF 34
 Sort/Merge 33
 Special Features 13
 Statistics 79, 82, 65
 Storage 01, 30, 34
 Supervisor 36
 Support Programs 31
 System Generation 34
 System Installation 34
 System Management Facility 34
 System Messages & Codes 40
 System Operation 40
 System Planning 34

 Teleprocessing 09, 30
 Testing 37
 Text Processing 73, 79
 Time Sharing 39
 Transportation 78
 Type I Listings 99

 Utilities 32, 76

MACHINES (00-15)

00 General System Information

GA26-5920 IBM 1800 SYSTEM SUMMARY
GA26-5919 IBM 1800 DATA ACQUISITION AND CONTROL SYSTEM CONFIGURATOR
GA24-3090 IBM TELEPROCESSING SYSTEMS SUMMARY
GA27-3018 IBM 2770 CONFIGURATORS (MANUAL)
GA27-3021 IBM 2790 CONFIGURATOR
**GF20-8172 INSTALLATION MANAGEMENT BIBLIOGRAPHY

01 Machine System

GA26-5918 IBM 1800 FUNCTIONAL CHARACTERISTICS
GA26-5753 IBM 1800 OPERATING PROCEDURES
GX26-1588 DECIMAL/HEXADECIMAL FRACTION CONVERSION CHART
GX26-1587 DECIMAL/HEXADECIMAL INTEGER CONVERSION CHART
GX26-5624 IBM 1800 REFERENCE SUMMARY: SYSTEM REFERENCE DATA

03 Printers, Control Units

GA24-3120 IBM 1443 PRINTER MODELS 1 THROUGH 4 AND N1, AND 1445 PRINTER
MODELS 1 AND N1: COMPONENT DESCRIPTION

05 Magnetic Tape Units, Control Units

GA22-6866 SYSTEM/360 COMPONENT DESCRIPTIONS: 2400-SERIES MAGNETIC
TAPE UNITS, 2803/2804 TAPE CONTROLS, AND 2816 SWITCHING UNIT
MODEL 1
**GA32-0006 TAPE SPECIFICATIONS FOR IBM ONE-HALF INCH TAPE DRIVES AT:
556 AND 800 BPI AND 3200 FCI

07 DASD, Control Units

GA26-5756 IBM DISK PACK AND CARTRIDGE HANDLING PROCEDURES
**GX20-1705 2311 MODEL 1 DISK STORAGE DRIVE CAPACITY AND TRANSMISSION
TIME: REFERENCE SUMMARY
GA26-5988 IBM SYSTEM/360 COMPONENT DESCRIPTIONS--2841 AND
ASSOCIATED DASD

08 Other Devices, Control Units

GA26-5710 IBM 1627 PLOTTER

09 Communications Devices

GA27-3004 GENERAL INFORMATION - BINARY SYNCHRONOUS COMMUNICATIONS
GA21-9028 IBM 357/1030/2790 BADGE SPECIFICATIONS
GA27-3013 SYSTEM COMPONENTS: IBM 2770 DATA COMMUNICATION SYSTEM
GA27-3014 IBM 2770 SYSTEM SUMMARY
GA27-3038 OPERATOR'S GUIDE: IBM 2770 DATA COMMUNICATION SYSTEM
GA27-3005 IBM 2780 DATA TRANSMISSION TERMINAL - COMPONENT DESCRIPTION
GA27-3015 IBM 2790 DATA COMMUNICATION SYSTEM COMPONENT DESCRIPTION
GA27-3016 IBM 2790 SYSTEM SUMMARY
GA27-3035 IBM 2790 DATA COMMUNICATION SYSTEM OPERATOR'S GUIDE
**GA27-3058 IBM 3872 MODEM USER'S GUIDE
**GA27-3062 IBM 3872 MODEM PROBLEM DETERMINATION CARD
**GA33-0002 IBM 3874 MODEM USER'S GUIDE
GA36-0001 IBM 4872 MODEM MODEL 1
GA36-0004 IBM 4872 MODEM MODELS 2 AND 3

14 Custom Features and Supporting Programs

GL26-2114 VIDEO DISPLAY WITH IBM 1800

15 Physical Planning

**GA24-3435 PLANNING AND INSTALLATION OF A DATA COMMUNICATION SYSTEM
USING IBM LINE ADAPTERS
**GA27-3006 IBM REMOTE MULTIPLEXERS AND COMMUNICATIONS TERMINALS
INSTALLATION MANUAL - PHYSICAL PLANNING
GX27-2900 IBM PHYSICAL PLANNING TEMPLATE: COMMUNICATIONS TERMINALS
GA26-5922 IBM 1800 INSTALLATION MANUAL - PHYSICAL PLANNING
GX26-3573 IBM PHYSICAL PLANNING TEMPLATE, 1800 DATA
ACQUISITION AND CONTROL SYSTEM
GA27-3019 IBM 2770 DATA COMMUNICATION SYSTEM
INSTALLATION MANUAL--PHYSICAL PLANNING
GX27-2909 PHYSICAL PLANNING TEMPLATE IBM 2770 DATA COMMUNICATION
SYSTEM
**GA27-3017 IBM 2790 DATA COMMUNICATION SYSTEM INSTALLATION MANUAL
PHYSICAL PLANNING

PROGRAMMING -- GENERAL (20-40)

20 Programming Systems -- General Information

GC20-1630 CATALOG OF PROGRAMS FOR IBM 1130 COMPUTING SYSTEM AND IBM
1800 DATA ACQUISITION AND CONTROL SYSTEM

25 FORTRAN

GX28-6384 IBM FORTRAN IV REFERENCE CARD

*
* C/PT (IBM 1800 CARD/PAPER TAPE PROGRAMMING SYSTEM) 20-40 *
*

21 Assembler

GC26-5882 IBM 1800 ASSEMBLER LANGUAGE (FOR C/PT & TSX), PROG NOS.
1800-AS-005, 006

25 FORTRAN

GC26-3715 IBM 1130/1800 BASIC FORTRAN IV LANGUAGE

30 Access Methods, Data Management, Storage/Communications Control Programs

GC26-3755 IBM 1130/1800 PLOTTER SUBROUTINES
GC26-5880 1800 SUBROUTINE LIBRARY (C/PT) PROG. NOS. 1800-LM-003, 004
GC26-3707 IBM 1800 - SYSTEM/360 ADAPTER AND 1827 DATA CONTROL UNIT
PROGRAMMER'S GUIDE

36 Control Program

GY26-3620 IBM 1130/1800 CARD/PAPER TAPE PROGRAMMING SYSTEMS, PROGRAM
LOGIC MANUAL

40 System Operation

GC26-3751 IBM 1800 CARD/PAPER TAPE PROGRAMMING SYSTEM,
OPERATOR'S GUIDE

*
* MPX (IBM 1800 MULTIPROGRAMMING EXECUTIVE OPERATING SYSTEM) 20-40 *
*

20 General Information

GC26-3718 IBM 1800 MULTIPROGRAMMING EXECUTIVE OPERATING SYSTEM
INTRODUCTION, PROG. NO. 1800-OS-010

21 Assembler

GC26-3778 IBM 1130/1800 ASSEMBLER LANGUAGE (1130 DMS AND 1800 MPX)
**GX26-3780 IBM 1130/1800 ASSEMBLER-LANGUAGE STATEMENTS SUMMARY (1130
DMS & 1800 MPX)

25 FORTRAN

GC26-3715 IBM 1130/1800 BASIC FORTRAN IV LANGUAGE

30 Access Methods, Data Management, Storage/Communications Control Programs

GC26-3757 IBM 1800 MULTIPROGRAMMING EXECUTIVE OPERATING SYSTEM
COMMUNICATIONS ADAPTER PROGRAMMING
GH20-0884 MPX SPOOLING, GENERAL INFORMATION MANUAL,
PROGRAM NUMBER 1800-SV-002
GH20-0977 MPX SPOOLING, PROGRAM DESCRIPTION MANUAL,
PROGRAM NUMBER 1800-SV-002
GH20-0984 MPX SPOOLING OPERATIONS MANUAL, PROGRAM NUMBER 1800-SV-002
GY20-0668 MPX SPOOLING SYSTEM MANUAL, PROGRAM NUMBER 1800-SV-002
GC26-3724 IBM 1800 MULTIPROGRAMMING EXECUTIVE OPERATING SYSTEM
SUBROUTINE LIBRARY - PROG. NO. 1800-OS-010
GC26-3755 IBM 1130/1800 PLOTTER SUBROUTINES
GC26-3707 IBM 1800 - SYSTEM/360 ADAPTER AND 1827 DATA CONTROL UNIT
PROGRAMMER'S GUIDE
GC26-3732 1800 MULTIPROGRAMMING EXECUTIVE OPERATING SYSTEM 1800/2790
DATA COMMUNICATION SYSTEM PROGRAMMING

36 Control Program

GH20-0881 1800 DISTRIBUTED SYSTEM PROGRAM, GENERAL INFORMATION MANUAL,
PROGRAM NUMBER 1800-SV-003
GH20-1142 1800 DISTRIBUTED SYSTEM PROGRAM, OPERATIONS GUIDE
PROGRAM NUMBER 1800-SV-003
GH20-1143 IBM 1800 DISTRIBUTED SYSTEM PROGRAM - PROGRAM REFERENCE
MANUAL - PROGRAM NUMBER 1800-SV-003
GY20-0803 1800 DISTRIBUTED SYSTEM PROGRAM LOGIC MANUAL
PROGRAM NUMBER 1800-SV-003
GC26-3720 IBM 1800 MULTIPROGRAMMING EXECUTIVE OPERATING SYSTEM
PROGRAMMER'S GUIDE - PROGRAM NUMBER 1800-OS-010
**GX26-1594 IBM 1800 REFERENCE SUMMARY MPX CONTROL STATEMENTS
PROGRAM NUMBER 1800-OS-010
GY26-3726 IBM 1800 MULTIPROGRAMMING EXECUTIVE OPERATING SYSTEM,
PROGRAM LOGIC MANUAL (PROGRAM NUMBER 1800-OS-010)

37 RAS... Testing, Service Aids, Problem Determination

**GC26-3727 IBM 1800 MULTIPROGRAMMING EXECUTIVE OPERATING SYSTEM ERROR
MESSAGES AND RECOVERY PROCEDURES, PROG NO. 1800-OS-010

40 System Operation

**GC26-3725 IBM 1800 MULTIPROGRAMMING EXECUTIVE OPERATING SYSTEM
OPERATING PROCEDURES, PROG. NO. 1800-OS-010

* * * * *
* * * * *
* TSX (IBM 1800 TIME SHARING EXECUTIVE SYSTEM) 20-40 *
* * * * *
* * * * *

21 Assembler

GC26-5882 IBM 1800 ASSEMBLER LANGUAGE (FOR C/PT & TSX), PROG NOS.
1800-AS-005, 006

25 FORTRAN

GC26-3715 IBM 1130/1800 BASIC FORTRAN IV LANGUAGE

30 Access Methods, Data Management, Storage/Communications Control Programs

GC26-3755 IBM 1130/1800 PLOTTER SUBROUTINES
GC26-3723 IBM 1800 TIME-SHARING EXECUTIVE SYSTEM SUBROUTINE LIBRARY
PROGRAM NUMBERS: 1800-OS-001, 1800-LM-009
GC26-3707 IBM 1800 - SYSTEM/360 ADAPTER AND 1827 DATA CONTROL UNIT
PROGRAMMER'S GUIDE

36 Control Program

GC26-3703 IBM 1800 TIME-SHARING EXECUTIVE SYSTEM CONCEPTS AND
TECHNIQUES, PROG. NO. 1800-OS-001
GY26-3702 IBM 1800 TIME-SHARING EXECUTIVE SYSTEM
PROGRAM LOGIC MANUAL, PROG. NO. 1800-OS-001, VERSION 3

40 System Operation

GC26-3754 IBM 1800 TIME-SHARING EXECUTIVE SYSTEM OPERATING PROCEDURES,
PROGRAM NUMBER 1800-OS-001, VERSION 3

* * * * *
* * * * *
* LICENSED PROGRAMS (20-40) *
* * * * *
* * * * *

28 RPG

GH20-0760 INTRODUCTION TO THE 1800 REPORT PROGRAM GENERATOR
PROG. NO. 5718-RG1
SH20-0774 1800 REPORT PROGRAM GENERATOR (RPG)
LANGUAGE SPECIFICATIONS MANUAL, PROG. NO. 5718-RG1
SH20-0779 1800 REPORT PROGRAM GENERATOR (RPG) OPERATIONS MANUAL
PROGRAM NUMBER 5718-RG1
GH20-4093 1800 REPORT PROGRAM GENERATOR (RPG) PROG. NO. 5718-RG1
FUNCTIONAL DESCRIPTION
LYB0-0534 1800 REPORT PROGRAM GENERATOR (RPG) SYSTEM MANUAL, VOLUME 2:
LISTINGS. PROG. NO. 5718-RG1, FEATURE NO. 8006

LY20-0533 1800 REPORT PROGRAM GENERATOR (RPG) SYSTEM MANUAL VOLUME I
PROGRAM NUMBER 5718-RG1 FEATURE CODE 8003

30 Access Methods, Data Management, Storage/Communications Control Programs

SH20-0974 1800/2260 DATA ENTRY SYSTEM (PROGRAMMING RPQ MA0718): PRO-
GRAM DESCRIPTION AND OPERATIONS MANUAL, PROG. NO. 5799-AAK
GH20-4423 1800/2260 DATA ENTRY SYSTEM (PROGRAMMING RPQ MA0718): PRPQ
FUNCTIONAL DESCRIPTION, PROG. NO. 5799-AAK
LY20-0660 1800/2260 DATA ENTRY SYSTEM (PROGRAMMING RPQ MA0718): SYSTEM
MANUAL, PROG. NO. 5799-AAK

LICENSED APPLICATION PROGRAMS (60-83)

60 Industries--General

**GC20-1747 EDUCATION INDUSTRY BIBLIOGRAPHY
GC20-1769 FINANCE AND SECURITIES INDUSTRIES BIBLIOGRAPHY
GH20-0536 INSURANCE INDUSTRY BIBLIOGRAPHY
GH20-0531 MEDIA INDUSTRIES BIBLIOGRAPHY
GH20-0970 MEDICAL INDUSTRIES BIBLIOGRAPHY
**GC20-1774 PUBLIC UTILITIES - COMMUNICATIONS: BIBLIOGRAPHY
**GC20-1773 PUBLIC UTILITIES - POWER: BIBLIOGRAPHY
GC20-1740 STATE AND LOCAL GOVERNMENT INDUSTRIES BIBLIOGRAPHY

74 Health

GH20-0715 IBM CLINICAL LABORATORY DATA ACQUISITION SYSTEM (CLDAS)
APPLICATION DESCRIPTION MANUAL, PROG. NO. 5718-H11
SH20-0731 IBM CLINICAL LABORATORY DATA ACQUISITION SYSTEM (CLDAS)
PROGRAM REFERENCE MANUAL PROGRAM NUMBER 5718-H11
GH20-0772 CLINICAL LABORATORY MANAGEMENT SYSTEM (CLMS)
APPLICATION DESCRIPTION MANUAL PROGRAM NUMBER 5718-H12
SH20-0823 IBM CLINICAL LABORATORY MANAGEMENT SYSTEM (CLMS)
5718-H12 PROGRAM DESCRIPTION MANUAL
SH20-0831 CLINICAL LABORATORY MANAGEMENT SYSTEM (CLMS) 5718-H12
OPERATIONS MANUAL
GH20-4402 CLINICAL LABORATORY MANAGEMENT SYSTEMS (CLMS) FUNCTIONAL
DESCRIPTION - PROGRAM PRODUCT 5718-H12
LY20-0649 CLINICAL LABORATORY MANAGEMENT SYSTEM (CLMS): SYSTEM MANUAL,
PROG. NO. 5718-H12, FEATURE NO. 8005
LY20-0670 CLINICAL LABORATORY MANAGEMENT SYSTEM (CLMS): MPX FEATURE
6000 CONVERSION MANUAL, PROG. NO. 5718-H12, FEATURE NO. 8007
LB21-0042 A SYSTEM FOR COMPUTERIZING MEDICAL EXAMINATIONS SYSTEMS
GUIDE, FDP PROG. NO. 5798-AAP, FEATURE NO. 8014
GB21-0130 1800/2790 HOSPITAL DATA COLLECTION AND COMMUNICATION
SYSTEM: FDP AVAILABILITY NOTICE, PROG. NO. 5798-ACA
SB21-0131 1800/2790 HOSPITAL DATA COLLECTION AND COMMUNICATION SYSTEM
FDP 5798-ACA DESCRIPTION/OPERATIONS
LB21-0132 1800/2790 HOSPITAL DATA COLLECTION AND COMMUNICATION SYSTEM
SYSTEMS GUIDE, FDP PROG. NO. 5798-ACA

75 Process

**GB21-1083 COLOR MATCHING (DYE SELECTION AND FORMULATION)
FDP 5798-AXL (FOR S/7), 5798-AXK (FOR S/3 MOD 10)
5798-AXN (FOR S/370) & 5798-AXP (FOR 1130 & 1800) NOTICE
SB21-1084 COLOR MATCHING (DYE SELECTION AND FORMULATION)
FDP'S 5798-AXK, L, N, & P DESCRIPTION/OPERATIONS
LB21-1085 COLOR MATCHING (DYE SELECTION AND FORMULATION)
FDP 5798-AXL, AXK, AXN, AXP - SYSTEMS GUIDE
GH20-0718 PROSPRO II (TSX/1800) PROCESS SYSTEMS PROGRAM: APPLICATION
DESCRIPTION MANUAL, PROG. NO. 5718-P81
SH20-0732 PROSPRO II (TSX/1800) PROCESS SYSTEMS PROGRAM
LANGUAGE SPECIFICATIONS MANUAL, PROG. NO. 5718-P81
SH20-0733 PROSPRO II (TSX/1800) PROCESS SYSTEMS PROGRAM: PROCESS
OPERATOR'S CONSOLE OPERATIONS MANUAL, PROG. NO. 5718-P81
SH20-0734 PROSPRO II (TSX/1800) PROCESS SYSTEMS PROGRAM: PROGRAM
DESCRIPTION MANUAL, PROG. NO. 5718-P81
GH20-4420 PROSPRO II (TSX/1800) PROCESS SYSTEMS PROGRAM: PROG. PROD.
5718-P81 FUNCTIONAL DESCRIPTION
LY20-0502 PROSPRO II (TSX/1800) PROCESS SYSTEMS PROGRAM SYSTEM MANUAL
VOLUME II PROGRAM LISTINGS
PROGRAM NUMBER 5718-P81 FEATURE CODE 8000
LY20-0503 PROSPRO II (TSX/1800) PROCESS SYSTEMS PROGRAM SYSTEM MANUAL
VOLUME I: PROGRAM LOGIC
PROGRAM NUMBER 5718-P81 FEATURE CODE 8000
GH19-0060 PROSPRO III (MPX/1800) PROCESS SYSTEMS PROGRAM, APPLICATION
DESCRIPTION MANUAL - PRPQ P73015 PROG. NO. 5799-ABP
SH19-0061 PROSPRO III (MPX/1800) PROCESS SYSTEMS PROGRAM, LANGUAGE
SPECIFICATIONS MANUAL - PRPQ P73015, PROG. NO. 5799-ABP
SH19-0062 PROSPRO III (MPX/1800) PROCESS SYSTEMS PROGRAM, OPERATOR
CONSOLE OPERATIONS MANUAL - PRPQ P73015, PROG. NO. 5799-ABP

SH19-0063 PROSPRO III (MPX/1800) PROCESS SYSTEMS PROGRAM PROGRAM
DESCRIPTION MANUAL - PRPQ P73015, PROG. NO. 5799-ABP
LY19-0014 PROSPRO III (MPX/1800) PROCESS SYSTEMS PROGRAM, SYSTEM
LOGIC MANUAL - PROGRAM NUMBER 5799-ABP

79 Cross-Industry (see also 82)

GH20-0724 1800 CHROMATOGRAPH MONITORING PROGRAM
APPLICATION DESCRIPTION MANUAL, PROG. NO. 5718-XX1
SH20-0861 1800 CHROMATOGRAPH MONITORING PROGRAM, OPERATIONS MANUAL
PROGRAM NUMBER 5718-XX1
SH20-0862 1800 CHROMATOGRAPH MONITORING PROGRAM, PROGRAM DESCRIPTION,
PROGRAM NUMBER 5718-XX1
GH20-4086 IBM 1800 CHROMATOGRAPH MONITORING PROGRAM FUNCTIONAL
DESCRIPTION, PROG. PRODUCT 5718-XX1
LY20-0594 1800 CHROMATOGRAPH MONITORING PROGRAM, SYSTEM MANUAL
PROGRAM NUMBER 5718-XX1 FEATURE CODE 8002

82 Cross-Industry -- Mathematics and Science

**GH20-4430 IBM 1130 AND 1800 SUBROUTINE LIBRARY - MATHEMATICS (SL-MATH)
PROG. PROD. 5711-XM2 FUNCTIONAL DESCRIPTION
GH12-5103 IBM SYSTEM/360 AND SYSTEM/370, IBM 1130 AND 1800 SUBROUTINE
LIBRARY-MATHEMATICS (SL-MATH) GENERAL INFORMATION MANUAL
PROG. NOS. 5736-XM7, 5711-XM2

*
* TYPE II PROGRAMS (20-83) *
*

Note: The following Type II program publications are available under SLSS by
order-number subscription only.

70 Government, State and Local

GH20-0212 1800 VEHICULAR TRAFFIC CONTROL SYSTEM (1800-UG-06X)
VERSION 2 APPLICATION DESCRIPTION
GH20-0335 1800 VEHICULAR TRAFFIC CONTROL SYSTEM - VERSION 2
PROGRAM DESCRIPTION MANUAL, PROG. NO. 1800-UG-06X
GH20-0336 1800 VEHICULAR TRAFFIC CONTROL SYSTEM (1800-UG-06X)
VERSION 2 OPERATIONS MANUAL
GY20-0082 1800 VEHICULAR TRAFFIC CONTROL SYSTEM: SYSTEM MANUAL, PROG.
NO. 1800-UG-06X, VERSION 2

75 Process

GH20-0261 1800 PROCESS SUPERVISORY PROGRAM (PROSPRO/1800)
APPLICATION DESCRIPTION, PROG. NO. 1800-CC-02X
GH20-0472 1800 PROCESS SUPERVISORY PROGRAM (PROSPRO/1800)
PROCESS OPERATOR'S MANUAL, PROG. NO. 1800-CC-02X
GH20-0473 1800 PROCESS SUPERVISORY PROGRAM (PROSPRO/1800)
(1800-CC-02X) LANGUAGE SPECIFICATIONS MANUAL
GH20-0474 1800 PROCESS SUPERVISORY PROGRAM (PROSPRO/1800)
(1800-CC-02X) USER'S MANUAL
GY20-0128 1800 PROCESS SUPERVISORY PROGRAM (PROSPRO/1800)
SYSTEM MANUAL PROGRAM NUMBER 1800-CC-02X

82 Cross-Industry -- Mathematics and Science

GH20-0208 1800/1130 CONTROL OPTIMIZATION PROGRAM (COP/1800-1130)
(1800-CC-01X) APPLICATION DESCRIPTION
GH20-0351 1800/1130 CONTROL OPTIMIZATION PROGRAM (COP/1800-1130)
VERSION 2 (1800-CC-01X) PROGRAM DESCRIPTION AND OPERATIONS
GY20-0110 1800/1130 CONTROL OPTIMIZATION PROGRAM (COP/1800-1130)
VERSION 2 (1800-CC-01X) - SYSTEM MANUAL

*
* OTHER SUPPLEMENTARY INFORMATION (85-99) *
*

85 Data Processing -- Introductory Manuals and Texts

GC20-1668 DATA COMMUNICATIONS PRIMER: STUDENT TEXT
GC20-1699 DATA PROCESSING GLOSSARY
**GB30-0521 KWIC INDEX TO GSD FIELD DEVELOPED PROGRAMS INSTALLED
USER PROGRAMS
GC20-1684 INTRODUCTION TO IBM DATA PROCESSING SYSTEMS: STUDENT TEXT

G320-1621	IBM MARKETING PUBLICATIONS KWIC INDEX
G310-0012	IBM WORLD TRADE MARKETING PUBLICATIONS KWIC INDEX
GR20-1618	NUMBER SYSTEMS - STUDENT TEXT
GR20-4419	INTRODUCTION TO SENSOR BASED SYSTEMS STUDENT TEXT
GR20-4420	INTRODUCTION TO SENSOR BASED SYSTEMS ILLUSTRATIONS

87 Education -- Course Catalogs

**G320-1244 CUSTOMER EDUCATION COURSE CATALOG

89 Installation Forms and Supplies

GX33-8000	1130/1800 ASSEMBLER CODING FORM
GX20-1734	1130 - 1800 BINARY CARD TEMPLATE
GX26-3635	1800 ANALOG INPUT SIGNAL CHART
GX26-3636	1800 ANALOG OUTPUT SIGNAL CHART
GX26-3637	1800 DIGITAL INPUT SIGNAL CHART
GX26-3638	1800 DIGITAL OUTPUT SIGNAL CHART
**GX20-8020	FLOWCHARTING TEMPLATE
**GX20-8021	FLOWCHARTING WORKSHEET
GX28-7327	FORTRAN CODING FORM
GX20-1755	IBM PROSPRO/1800 MISCELLANEOUS DATA FORM PROGRAM NUMBERS 5718-PS1, 1800-CC-02X

95 EWS (Early Warning System)

Note: EWS, published on microfiche, contains information useful in program support and problem determination. Automatic updating is available through SLSS (order-number subscription only).

S2C0-0151	1130/1800 EARLY WARNING MICROFICHE
S2C0-0301	MICROFICHE EARLY WARNING - PROGRAM PRODUCTS, CSP AND SCP

99 Type I Program Listings (Microfiche)

Note: The following program listings are available for Type I programs. Automatic updating is available through SLSS (order-number subscription only).

**GJD1-3010	MICROFICHE - SOURCE LISTING IBM 1800 PROGRAMS CARD/PAPER TAPE PROGRAM NUMBERS 1800-AS-005 1800-AS-006 1800-FO-007 1800-FO-008 1800-LM-003 1800-LM-004 1800-UT-001 1800-UT-002
**GJD1-3030	IBM TSK TIME SHARING EXECUTIVE SYSTEM (1800-OS-001) AND NON-REentrant SUBROUTINE (1800-LM-009) SOURCE LISTING FICHE
**GJD1-3070	MICROFICHE - SOURCE LISTING IBM 1800 MPX MULTIPROGRAMMING EXECUTIVE SYSTEM 1800-OS-010
**GYB0-0799	IBM 1800 DISTRIBUTED SYSTEM PROGRAM: LISTINGS MICROFICHE PROGRAM NUMBER 1800-SV-003

Part 2. Abstracts

GA22

SB21

GA22-6866

SYSTEM/360 COMPONENT DESCRIPTIONS: 2400-SERIES MAGNETIC TAPE UNITS, 2803/2804 TAPE CONTROLS, AND 2816 SWITCHING UNIT MODEL 1

This manual contains a comprehensive presentation of the characteristics, functions, and features of the IBM 2400 Series Magnetic Tape Units, 2803/2804 Tape Controls, and a general description of the IBM 2816 Model 1 Switching Unit. The 2400 series consists of the 2401, 2402, and 2420 Magnetic Tape Units, and 2403, 2404, and 2415 Magnetic Tape Units and Controls.

In most instances, operational descriptions are limited to the channel and command level. Operating functions and procedures common and fundamental to all I/O operations are described in IBM SYSTEM/360 PRINCIPLES OF OPERATION, Order Number GA22-6821.

Subjects covered include magnetic tape unit principles; keys and lights; tape load, unload, and cleaning procedures; status and sense information; magnetic tape handling; tape block and reel organization; and error recovery procedures. Manual, 70 pages

System/360 interface. The Appendixes provide summary tables of the instruction set and instruction execution times. Manual, 308 pages

GA26-5919

IBM 1800 DATA ACQUISITION AND CONTROL SYSTEM CONFIGURATOR
Chart listed all units that can be configured on 1800. Configurator Sheet, 25 x 11, 2 folds, 2 sides

GA26-5920

IBM 1800 SYSTEM SUMMARY
This publication introduces system concepts, units, features, and programs for the 1800 system. This information will help the user achieve a basic understanding of the system and the interrelationship of its many parts. Manual, 28 pages

GA26-5922

IBM 1800 INSTALLATION MANUAL - PHYSICAL PLANNING
This publication contains physical planning information for the 1800 system. It includes dimensions, weights, cable locations and available lengths, service clearances and other necessary physical information for each unit of the system. A proposed planning schedule and the environmental and electrical requirements are also included. Manual, 104 pages

GA24-3089

SUPPLEMENTAL BIBLIOGRAPHY: TELEPROCESSING/DATA COLLECTION
This is primarily a supplement to the IBM data processing system bibliographies. It lists and describes publications on that teleprocessing and data collection equipment which is used independently or with several systems.

Publications on TP hardware used with only one data processing system are in the bibliography for that system. Likewise, publications on a TP program written to run on a single data processing system are in the bibliography for that system. This supplement lists, and should be used with, each system bibliography that may be associated.

Planning, installation, programming, and operator's publications are listed. Titles, order numbers, current status, Technical Newsletter numbers, and an abstract of each listed item are included in this regularly updated supplemental bibliography. Manual, 20 pages

GA26-5988

IBM SYSTEM/360 COMPONENT DESCRIPTIONS--2801 AND ASSOCIATED DEVD
This publication contains reference information for the operation and programming of storage devices which attach to the IBM 2801 Storage Control. These storage devices include the IBM 2311 Disk Storage Drive, Model 1; the IBM 2302 Disk Storage, Models 3 and 4; and IBM 2321 Data Cell Drive; and the IBM 2303 Drum Storage. Manual, 64 pages

GA24-3120

IBM 1443 PRINTER MODELS 1 THROUGH 5 AND M1, AND 1445 PRINTER MODEL 1 AND M1: COMPONENT DESCRIPTION
This reference publication describes the operation of the IBM 1443 and 1445 Printers with the IBM 1240, 1401, 1440, 1450, 1460, 1800, and the IBM System/360 Data Processing System Models 25 through 85.

The manual discusses timing information for the printer and the tapecontrolled carriage, as well as their functional and operating characteristics. The speed of the printer using the various character sets is described. Also, included is command, status, and sense information for these printers used with the IBM System/360 Data Processing System. Manual, 36 pages

GA21-0040 (see page 17)

SB21-0041

A SYSTEM FOR COMPUTERIZING MEDICAL EXAMINATIONS PROGRAM DESCRIPTION/OPERATIONS MANUAL - PROGRAM NUMBER 5798-AAP
This manual describes the capabilities of the system and the programs. Discussion of design assumptions and potential modification areas are included. Record and file layouts are described, and primary processing procedures specified. This manual is both a system description and an installation and operations reference document.
This is a system to facilitate the collection and reporting of multiphasic medical data, including medical history and the results of various on-line and off-line procedures. Field Developed Program-Manual, 145 pages

GA26-5710

IBM 1627 PLOTTER
This publication describes the 1627 Plotter, Models 1 and 2. The 1627, in conjunction with the 1626 Plotter Control Unit, is capable of providing fully annotated graphs as an on-line function of a 1620 or 1710 system. Manual, 12 pages

LB21-0042

A SYSTEM FOR COMPUTERIZING MEDICAL EXAMINATIONS SYSTEMS GUIDE, FDP PROG. NO. 5798-AAL, FEATURE NO. 8014
This "User's Manual" is for the Systems Analyst, Programmer and Operator during the Systems Test and Daily Operations of the programs. It also contains programmer notes to assist in making minor alterations.
This is a system to facilitate the collection and reporting of multiphasic medical data, including medical history and the results of various on-line and off-line list procedures. Field Developed Program-Systems Guide, 569 pages

GA26-5753

IBM 1800 OPERATING PROCEDURES
This publication is a guide for operators using the IBM 1800 System console and data processing input/output devices. It covers in detail operator duties normally encountered when using the system console or operating the data processing input/output devices. No specific programming system is assumed.

Functions of the system console keys, lights, and switches are included in this publication, as well as descriptions of the operator keys and lights, manual controls, setup procedures, and principles of operation for the data processing input/output devices. Procedures for clearing conditions that require operator intervention are given. Manual, 104 pages

GB21-0100

CUMULATIVE REPORT SUBSYSTEM FOR CLMS FDP - AVAILABILITY NOTICE - PROGRAM NUMBER 5798-ABP
This 4 page document describes the purpose and highlights of the Cumulative Report Subsystem for CLMS program. Written in 1800 Assembler Language and FORTRAN IV, this program will enable CLMS users to produce a daily cumulative report of test results for each patient in the hospital having any laboratory test activity that day.
This Availability Notice contains complete ordering instructions for the Field Developed Program and all its related documentation, for management and data processing personnel who are prospective users of the program and others who require information concerning it. Availability Notice, 4 pages

GA26-5756

IBM DISK PACK AND CARTRIDGE HANDLING PROCEDURES
This manual is a guide for handling IBM Disk Packs and cartridges. Included are procedures for shipping and receiving, installation and removal, labeling of disks and cartridges and general operating procedures.
The information contained in this manual applies to IBM 1316, 2316, and 3336 Disk Packs, and 2315 Disk cartridges. Manual, 16 pages

SB21-0101

CUMULATIVE REPORT SUBSYSTEM FOR CLMS FDP - PROGRAM DESCRIPTION/OPERATIONS MANUAL PROGRAM NUMBER 5798-ABP
This 22 page document describes the capabilities of the FDP and the programs of the Cumulative Report Subsystem for CLMS written in 1800 Assembler Language and Fortran IV. The Cumulative Subsystem is a system of files and programs designed to provide the ability to produce a cumulative report of test results for up to five days for each patient having test activity on a given day.
This Program Description/Operations Manual provides the user with sufficient information to understand, install and

GA26-5918

IBM 1800 FUNCTIONAL CHARACTERISTICS
This manual provides basic programming and operating characteristics for the IBM 1800 System. The manual includes typical application areas, Processor-Controller instruction set, digital and analog input/output, and

- successfully use the program.
Program Description/Operations Manual, 22 pages
- LB21-0102 *N
CUMULATIVE REPORT SUBSYSTEM FOR CLMS
FDP SYSTEMS GUIDE - PROGRAM NUMBER 5798-ABP
This 62 page document describes the steps necessary to modify the Cumulative Report Subsystem for CLMS FDP written in 1800 Assembler Language and Fortran IV. The Cumulative Subsystem is a system of files and programs designed to provide the ability to produce a cumulative report of test results for up to five days for each patient having test activity on a given day.
This systems guide provides the Systems Analyst with the necessary information on the design, logic and coding of the system to enable him to make modifications, diagnose program errors and perform program maintenance.
Systems Guide, 62 pages
- GB21-0130
1892/2790 HOSPITAL DATA COLLECTION AND COMMUNICATION SYSTEM: FDP AVAILABILITY NOTICE, PROG. NO. 5798-ACA
This program provides for routing of messages and service requests between nursing stations and service areas of a hospital; it will print back at the originating station for verification, and automatically capture any charge and log it on the patient's record. Ancillary services for pharmacy, laboratory, and admissions are provided.
Field Developed Program Availability Notice, 6 pages
- SB21-0131 *N
1800/2790 HOSPITAL DATA COLLECTION AND COMMUNICATION SYSTEM
PROGRAM DESCRIPTION/OPERATIONS MANUAL
PROGRAM NUMBER 5798-ACA
This manual describes the capabilities of the system and the programs. Discussion of design assumptions and potential modification areas are included. Record and file layouts are described, and primary processing procedures specified. This manual is both a system description and an installation and operations reference document.
This program provides for routing of messages and service requests between nursing stations and service areas of a hospital; it will print back at the originating station for verification, and automatically capture any charge and log it on the patient's record. Ancillary services for pharmacy, laboratory, and admissions are provided.
Field Developed Program - Program Description/Operations Manual, 98 pages
- LB21-0132 *N
1800/2790 HOSPITAL DATA COLLECTION AND COMMUNICATION SYSTEM
SYSTEMS GUIDE, FDP PROG. NO. 5798-ACA
This "User's Manual" is for the Systems Analyst, Programmer and Operator during the Systems Test and Daily Operations of the programs. It also contains programmer notes to assist in making minor alterations.
This program provides for routing of messages and service requests between nursing stations and service areas of a hospital; it will print back at the originating station for verification, and automatically capture any charge and log it on the patient's record. Ancillary services for pharmacy, laboratory, and admissions are provided.
Field Developed Program - Systems Guide, 163 pages
- GB21-0133
IBM 1800 BATCH DYE CONTROL SYSTEM: FDP AVAILABILITY NOTICE, PROGRAM NUMBER 5798-ACB
The availability notice is a marketing oriented document that describes the purpose and capabilities of the program, advantages of design, and problems solved by the program referenced in the title.
Field Developed Program Availability Notice, 4 pages
- SB21-0134 *N
IBM 1800 BATCH DYE CONTROL SYSTEM: PROGRAM
DESCRIPTION/OPERATIONS MANUAL, FDP PROG. NO. 5798-ACB
Combination announcement letter and sales flyer. Contains information on principal system highlights, benefit to user and description of system capabilities. Also addresses the programming language, system configuration, installation tasks and possible system modifications. Data on seminars and workshops is presented as is all information necessary to order the program.
Notice, 4 pages
- LB21-0135 *N
IBM 1800 BATCH DYE CONTROL SYSTEM: SYSTEM GUIDE, FDP PROG. NO. 5798-ACB
This manual describes the capabilities of the system and the programs. Discussion of design assumptions and potential modification areas are included. Record and file layouts are described, and primary processing procedures specified. This manual is both a system description and an installation and operations reference document.
Manual, 58 pages
- GB21-0193
PROSPRO/1800 OPERATOR'S CONSOLE SUPPORT - TSX/MPX: FDP
AVAILABILITY NOTICE - PROGRAM NUMBER 5798-ADA
This program provides 1892 Model 11 Process Operator Console support for PROSPRO/1800/TSX (1800-CC-02X) and PROSPRO/1800/MPX (5798-ADD).
Field Developed Program - Availability Notice, 4 pages
- SB21-0194 *N
PROSPRO/1800 OPERATOR CONSOLE SUPPORT - TSX/MPX
PROGRAM DESCRIPTION/OPERATIONS MANUAL
PROGRAM NUMBER 5798-ADA
This manual describes the capabilities of the system and the programs. Discussion of design assumptions and potential modification areas are included. Record and file layouts are described, and primary processing procedures specified. This manual is both a system description and an installation and operations reference document.
This program provides 1892 Model 11 Process Operator Console support for PROSPRO/1800/TSX (1800-CC-02X) and PROSPRO/1800/MPX (5798-ADD).
Field Developed Program - Manual, 32 pages
- LB21-0195 *N
PROSPRO/1800 OPERATOR CONSOLE SUPPORT - TSX/MPX
SYSTEMS GUIDE - PROGRAM NUMBER 5798-ADA
This "User's Manual" is for the Systems Analyst, Programmer and Operator during the Systems Test and Daily Operations of the programs. It also contains programmer notes to assist in making minor alterations.
This program 1892 Model 11 Process Operator Console support for PROSPRO/1800/TSX (1800-CC-02X) and PROSPRO/1800/MPX (5798-ADD).
Field Developed Program - Systems Guide, 150 pages
- GB21-0196
PROSPRO/1800/MPX: FDP AVAILABILITY NOTICE PROG. NO. 5798-ADD
This program provides modifications to PROSPRO/1800, TYPE III program, to run under MPX, enabling the user to take advantage of the hardware feature supported only under MPX and the software features of MPX which are superior to TSX.
Field Developed Program Availability Notice, 4 pages
- SB21-0197 *N
PROSPRO/1800/MPX PROGRAM DESCRIPTION/OPERATIONS MANUAL
PROGRAM NUMBER 5798-ADD
This manual describes the capabilities of the system and the programs. Discussion of design assumptions and potential modification areas are included. Record and file layouts are described, and primary processing procedures specified. This manual is both a system description and an installation and operations reference document.
This program provides modifications to PROSPRO/1800, TYPE III program, to run under MPX, enabling the user to take advantage of the hardware feature supported only under MPX and the software features of MPX which are superior to TSX.
Field Developed Program - Manual, 32 pages
- LB21-0198 *N
PROSPRO/1800/MPX SYSTEMS GUIDE - PROGRAM NUMBER 5798-ADD
This "User's Manual" is for the Systems Analyst, Programmer and Operator during the Systems Test and Daily Operations of the programs. It also contains programmer notes to assist in making minor alterations.
This program provides modifications to PROSPRO/1800, TYPE III program, to run under MPX, enabling the user to take advantage of the hardware feature supported only under MPX and the software features of MPX which are superior to TSX.
Field Developed Program - Systems Guide, 95 pages
- GB21-9949 *N
CUSTOMER FDP/IUP POCKET INFORMATION BROCHURE
This information brochure is intended for customer consumption and reflects the inventory of all available FDP's and IUP's. It contains all program numbers, prices, and all general informational and promotional manuals available to our customers.
Reference Card
- GC20-1618 *N
NUMBER SYSTEMS - STUDENT TEXT
This IBM student text on number systems presents a brief review of the principles of positional notation, as applied to the binary and hexadecimal systems of notation. The publication covers the operations of binary and hexadecimal arithmetic, decimal-binary - hexadecimal base conversion, and the principles of base and base-minus-one complementation.
Student Text, 32 pages
- GC20-1630 *N
CATALOG OF PROGRAMS FOR IBM 1130 COMPUTING SYSTEM AND IBM
1800 DATA ACQUISITION AND CONTROL SYSTEM
This Catalog contains a complete listing of all Program

Products and Type I, II, III, IV, and prior use 1130 and 1800 programs available from the Program Information Department, 40 Jaw Mill River Road, Hawthorne, New York 10532.

Instructions for ordering Program Products can be obtained from your local IBM Branch Office. Instructions for ordering Type I, II, III, IV and See BOM Marketing Activity and Program Information section, Ordering Programs from PID subsection, as updated by BMR DP 203, 2E39-4700-0, 4/1/72. Manual, 132 pages

GC20-1664

INTRODUCTION TO IBM DATA PROCESSING SYSTEMS

This manual presents concepts and principals essential to a basic knowledge of computers. It is designed for use in training programs that serve as prerequisites for a detailed study of an IBM system. Covered in general terms are topics such as Data Representation, Storage Devices, CPU Functions, I/O Devices, Stored Program Principles, Programming Systems, Operating Systems, Conversion, and Procedural Controls. Reference to specific systems is made to illustrate general principles. Manual, 112 pages

GC20-1699

DATA PROCESSING GLOSSARY

This glossary contains over 2,000 definitions of terms in the data processing field. It contains definitions from:

1. The American National Standard Vocabulary for Information Processing, published by the American National Standards Institute, Inc. (ANSI).
 2. The proposed American National Standard Vocabulary.
 3. The IBM Data Communications Glossary (GC20-1666).
 4. The IBM Glossary of Information Processing.
- Manual, 136 pages

GC20-1740

STATE AND LOCAL GOVERNMENT INDUSTRIES BIBLIOGRAPHY

The purpose of this bibliography and the associated classification system is to list and categorize IBM application publications that are pertinent to the state and local government industry. Bibliography, 24 pages

GC20-1747

BIBLIOGRAPHY OF APPLICATION PUBLICATIONS EDUCATION INDUSTRY
The purpose of this bibliography and the associated classification system is to list and categorize IBM application publications that are pertinent to the Education Industry. Section I lists these publications by subject area. Section II contains an abstract of each publication in form number sequence.

A periodic Bibliography of Application Publications (BAP) newsletter is published to keep the bibliography up to date. The newsletter is divided into two sections. Section I is an updated listing of application publications by application or industry. This section also includes any corrections to the bibliography and a list of superseded publications. Section II contains an abstract of each publication not included in the published bibliography. Bibliography, 32 pages

GC26-3703

IBM 1800 TIME-SHARING EXECUTIVE SYSTEM CONCEPTS AND TECHNIQUES, PROG. NO. 1800-OS-80

The purpose of this publication is to describe the facilities provided by the IBM 1800 Time-Sharing Executive (TSX) system, and to explain the basic concepts and techniques underlying their use. It is intended as a reference and guide for customer systems personnel in the implementation of the TSX system.

The manual is divided into four sections. The first section serves as an overall introduction to the TSX system. The second and third sections describe the three main executive programs and discuss some of the important design considerations that bear on the use of standard TSX components. The final section provides selections of programming techniques covering a wide spectrum of TSX usage.

The general approach taken is to explain each concept as it is encountered, and, where possible, elucidate that concept by means of an example. Numerous sample problems are included to acquaint the programmer with recommended techniques of TSX programming. A detailed TSX Sample System is specially provided as a tutorial on all aspects of TSX design, usage and implementation. Manual, 318 pages

GC26-3707

IBM 1800 - SYSTEM/360 ADAPTER AND 1827 DATA CONTROL UNIT PROGRAMMER'S GUIDE

This publication is a tutorial in S/360 Adapter and 1827 Data Control Unit programming. It should be used as a supplement to the publications IBM 1800 DATA ACQUISITION AND CONTROL SYSTEM FUNCTIONAL CHARACTERISTICS (Form A26-5918) and IBM SYSTEM/360 COMPONENT DESCRIPTION, 1827 DATA

CONTROL UNIT (Form A22-6668). Sample programs and coding are interspersed with the text throughout this publication and serve as illustrations of programming techniques. Manual, 166 pages

GC26-3715

IBM 1130/1800 BASIC FORTRAN IV LANGUAGE

This publication presents the specifications and programming rules for the Basic FORTRAN IV Language used under the following programming systems:

- IBM 1130 Card/Paper Tape Programming System
 - IBM 1130 Disk Monitor System, Version 1
 - IBM 1130 Disk Monitor System, Version 2
 - IBM 1800 Card/Paper Tape Programming System
 - IBM 1800 Time-Sharing Executive Operating System
 - IBM 1800 Multiprogramming Executive Operating System
- Sections on constants, variables, arrays, arithmetic operators, FORTRAN statements, statement numbers, and compilation messages are provided for use by programmers who write FORTRAN IV programs for the 1130 or 1800 system. Programmers using this manual are expected to have a basic knowledge of the FORTRAN language and its application. Manual, 62 pages

GC26-3718

IBM 1800 MULTIPROGRAMMING EXECUTIVE OPERATING SYSTEM**INTRODUCTION, PROG. NO. 1800-OS-010**

This manual is an introduction to the IBM 1800 Multiprogramming Executive (MPX) Operating System. Intended for new and prospective 1800 installation managers, programmers, and operators, it assumes only a knowledge of a few process-control and data-processing terms.

Topics discussed are: what the 1800 system is used for, what some of its capabilities and features are, what one might need from an operating system, what MPX does about these needs, and how MPX is organized. Manual, 54 pages

GC26-3720

IBM 1800 MULTIPROGRAMMING EXECUTIVE OPERATING SYSTEM**PROGRAMMER'S GUIDE - PROGRAM NUMBER 1800-OS-010**

The IBM 1800 Multiprogramming Executive (MPX) Operating System is a set of programs that carries out operations required by all or many applications of the IBM 1800 Data Acquisition and Control System. This book is a reference manual for programmers; it describes:

- o An overview of the MPX system.
- o Designing an MPX operating system to meet the needs of an installation.
- o Writing the code necessary to establish an MPX system that has already been designed.
- o Writing programs to be executed under control of MPX. These include programs for process control, data acquisition, and control of manufacturing operations, and programs to perform problem-solving, record-keeping, and accounting tasks.
- o Customer Engineer MPX on-line diagnostic aids.

Topics discussed are: what decisions must be made by the designer of an MPX system, what factors must be considered in making these decisions, what capabilities are provided by the MPX system programs, how the programmer can use these capabilities, and what programming techniques the programmer can employ to make optimum use of MPX.

The reader is expected to have a basic knowledge of what MPX is, how it works, and how it is organized. He must also have a basic knowledge of what machines make up the 1800 system and what they do. To understand some parts of the book, especially the examples, the reader must know the 1800 assembler language and basic FORTRAN IV. Manual, 480 pages

GC26-3723

IBM 1800 TIME-SHARING EXECUTIVE SYSTEM SUBROUTINE LIBRARY**PROGRAM NUMBERS: 1800-OS-001, 1800-LW-003**

This publication describes the subroutine library supplied by IBM for the support of the IBM 1800 Time-Sharing Executive System.

The general features of data transfer and input-output subroutine operation are first explained, followed by a detailed description of each of the five following groups of subroutines within the library:

- Data processing and process input/output subroutines
- Conversion subroutines
- Arithmetic and functional subroutines
- FORTRAN input/output subroutines
- Miscellaneous subroutines

The appendices contain related information including: a character code chart, a TSX subroutine library summary, subroutine core requirements, TSX subroutine timings, and online KAC errors and recovery procedures. Manual, 132 pages

GC26-3724

IBM 1800 MULTIPROGRAMMING EXECUTIVE OPERATING SYSTEM**SUBROUTINE LIBRARY - PROG. NO. 1800-OS-010**

This manual describes subroutines that are supplied by IBM for use by the customer with an IBM 1800 Multiprogramming

Executive Operating System. It is a reference manual to be used by programmers who have a basic knowledge of the MPX system.

The subroutines are described in the following categories; data processing and process input/output, conversion, arithmetic and functional, FORTRAN input/output, diagnostic, Error Alert control, real time, and machine functions.
Manual, 272 pages

GC26-3725

IBM 1800 MULTIPROGRAMMING EXECUTIVE OPERATING SYSTEM OPERATING PROCEDURES, PROG. NO. 1800-OS-010

This manual is intended for operators of the IBM 1800 Multiprogramming Executive (MPX) Operating System. It explains how to operate the 1800 input/output devices and console; how to generate and start an MPX system; how to operate and maintain the system once it has been generated; how to use the utility programs and debugging aids that are part of MPX. The reader is expected to have a basic knowledge of what MPX does and how it works.
Manual, 172 pages

GC26-3727

IBM 1800 MULTIPROGRAMMING EXECUTIVE OPERATING SYSTEM ERROR MESSAGES AND RECOVERY PROCEDURES, PROG. NO. 1800-OS-010

This manual lists all the error messages printed by the 1800 Multiprogramming Executive (MPX) Operating System and gives procedures on how to correct errors. It is intended for use as a reference manual for operators and programmers. It is assumed that users of this manual have a basic knowledge of the MPX system.
Manual, 200 pages

GC26-3732

1800 MULTIPROGRAMMING EXECUTIVE OPERATING SYSTEM 1800/2790 DATA COMMUNICATION SYSTEM PROGRAMMING

This manual describes the programming support for the IBM 2790 Data Communication System when used with the IBM 1800 Multiprogramming Executive (MPX) Operating System.

This manual is intended for use as a reference manual by programmers who are familiar with the MPX system concepts and capabilities.

The descriptions include an introduction to the system and its units, information to assist you in planning and defining a coreload to operate your 1800/2790 system, and information to assist you in using the IBM-supplied subroutines for operating the system.
Manual, 132 pages

GC26-3751

IBM 1800 CARD/PAPER TAPE PROGRAMMING SYSTEM OPERATOR'S GUIDE

This publication provides the information necessary to operate the IBM 1800 Card and Paper Tape Programming Systems: FORTRAN Compiler, Assembler and Compressor, Subroutine Library, and Utility Programs. Primarily intended for the machine operator, the manual describes the loading and restart procedures for the programming systems in detail.
Manual, 118 pages

GC26-3754

IBM 1800 TIME-SHARING EXECUTIVE SYSTEM OPERATING PROCEDURES, PROGRAM NUMBER 1800-OS-001, VERSION 3

This publication contains the operating procedures for generating and maintaining the IBM 1800 TSX Programming System. The 1800 TSX system on-line (process), off-line (nonprocess) modes and the methods for switching between them are described in detail, as are the formats of the user-generated equate cards required to define the system. All error messages and their recovery procedures are listed.
Manual, 216 pages

GC26-3755

IBM 1130/1800 PLOTTER SUBROUTINES

This publication describes relocatable plotter subroutines for the IBM 1130 and 1800 systems. These subroutines can be used to draw and scale grid lines, to draw special point characters, to draw alphanumeric characters at various angles, and to plot curves, graphs, charts, and maps. The subroutines can be used in both assembler and FORTRAN language programs.
Manual, 28 pages

GC26-3757

IBM 1800 MULTIPROGRAMMING EXECUTIVE OPERATING SYSTEM COMMUNICATIONS ADAPTER PROGRAMMING

This manual describes the programming support, under the IBM 1800 Multiprogramming Executive (MPX) Operating System, of the communications adapter feature of the IBM 1800 Data Acquisition and Control System.

It is intended for use as a reference manual for system programmers who have a basic knowledge of the MPX system.

It describes the functions and use of BSCIO (the communications adapter input/output control subroutine) and the support and diagnostic subroutines necessary to

write programs to carry out binary synchronous communications with other computers and terminals over telephone lines. Sample programs are also provided to illustrate the use of the various functions of BSCIO.
Manual, 136 pages

GC26-3778

IBM 1130/1800 ASSEMBLER LANGUAGE (1130 DMS AND 1800 MPX)

This manual describes the 1130/1800 Macro Assembler, its language, and the use of the language for both the 1130 Disk Monitor System, Version 2, and the 1800 Multiprogramming Executive Operating System, Version 3.

The information presented can be used by programmers who know number systems and basic computer terms to learn the 1130/1800 assembler language, and by programmers who know this assembler language to learn about macro programming.

This manual describes assembler language, assemblers, the 1130/1800 Macro Assembler, and for this particular assembler, the basic assembler-language statement structure, and assembler-language statements, program creation and execution, macro instructions, creation of a macro language, macro library maintenance, and detection and correction of errors in assembler language programs.
Manual, 268 pages

GC26-5880

IBM 1800 SUBROUTINE LIBRARY (C/PT), PROG NOS. 1800-LM-001, 004

This publication describes the subroutines in the IBM 1800 Card/Paper Tape Programming System Subroutine Library. The library consists of input/output, conversion, arithmetic and functional, and selective dump subroutines. Included in the descriptions are calling sequences for the subroutines and explanations of the parameters involved.

The section on conversion subroutines describes the data codes used with the 1800 System input/output devices. An appendix lists these codes, and shows their relationship to each other.
Manual, 118 pages

GC26-5882

IBM 1800 ASSEMBLER LANGUAGE (FOR C/PT & TSX), PROG NOS. 1800-AS-005, 006

This publication contains the information necessary to write programs in the IBM 1800 Assembler Language. Included are rules for statement writing, mnemonic codes and descriptions of operands, and descriptions of the instructions used to control the Assembler program.
Manual, 140 pages

GF20-8172

BIBLIOGRAPHY OF DATA PROCESSING TECHNIQUES

This bibliography provides a selection of IBM publications which, either wholly or in part, describe data processing techniques - generally useful methods and applications, studies in analysis and design, management of a data processing department, and the like. The listing of a publication in this bibliography does not, however, preclude its appearance in one or more bibliographies for specific systems.

Titles, order numbers, current status, and an abstract of each item are provided. Titles are listed two ways: by topic, with order number indicated and in order-number sequence with title given.
Manual, 8 pages

GH12-5002

IBM 1130 AND 1800 SUBROUTINE LIBRARY-MATHEMATICS (SL-MATH)

PD0 (PROGRAM PRODUCT DESIGN OBJECTIVES), PROG. NO. 5711-XM2

The Subroutine Library-Mathematics (SL-MATH) is a collection of mathematical subroutines written completely in FORTRAN IV language. It consists of input/output-free computational building blocks that can be combined with the user's input or computation routines to meet his individual requirements. Design objectives, 2 pages

GH12-5103

IBM SYSTEM/360 AND SYSTEM/370, IBM 1130 AND 1800 SUBROUTINE LIBRARY-MATHEMATICS (SL-MATH) GENERAL INFORMATION MANUAL

PROG. NOS. 5736-XM7, 5711-IM2

The Subroutine Library-Mathematics (SL-MATH) is a collection of subroutines dealing with matrix algebra and numerical mathematics. The subroutines are written in FORTRAN IV. SL-MATH consists of input/output-free computational building blocks which may be combined with the user's input or computation routines to meet his individual requirements. The subroutines in this library can be applied to the solution of many problems in industry, science, and engineering.

This manual presents an introduction to SL-MATH, a list of the capabilities of the library, rules of usage, system configuration, programming systems, and a list of reference material.
Manual, 41 pages

GH19-0060

PROSPRO III (MPX/1800) PROCESS SYSTEMS PROGRAM, APPLICATION DESCRIPTION MANUAL - PRPQ P73015, PROG. NO. 5799-ABP
PROSPRO III (Process Systems Program) is an easily used, standardized system utilizing the IBM 1800 Data Acquisition and Control System for industrial control applications which are mostly continuous operations. This programming RPO is available on special quotation only (see Preface). The user specifies the parameters of control strategy and/or data acquisition by filling in blanks on eleven special forms from which cards are punched and entered on-line into data files and tables of pointers which cause the system to perform the defined actions.

The PROSPRO III system, with its forms-oriented structure and high-level language capabilities, implements supervisory control and direct digital control (DDC).

Comprehensive man-machine-process interactive communication is built around the IBM 1892 Model 11 Process Operator Console. The entire PROSPRO III system is designed and coded utilizing efficient file structures, file buffering, and program execution procedures.

This manual provides general information about the system, its design philosophy, its five processors, and configuration and capacity considerations. The various programming forms are described in terms of system applications. A comprehensive glossary defines special terms germane to process control in general and to PROSPRO III control in particular.
 Manual, 76 pages

SH19-0061

PROSPRO III (MPX/1800) PROCESS SYSTEMS PROGRAM, LANGUAGE SPECIFICATIONS MANUAL - PRPQ P73015, PROG. NO. 5799-ABP
PROSPRO III is a programming system for the IBM 1800 Data Acquisition and Control System. This program RPQ is available on special quotation only (see inside front cover). The system provides the user with a group of eleven standardized forms which are used to specify the parameters of data acquisition and control for industrial processes. Through the use of these forms, scanning of process signals can be defined, limit checking performed, both supervisory and direct digital control (DDC) implemented, and advanced control techniques employed.

The system supports up to sixteen IBM 1892, Model 11, Process Operator Consoles, which provide comprehensive man-machine-process interactive communications.

This manual provides detailed descriptions of the control algorithms that are used, of the ways to complete the forms, and illustrates the use of the system with several example problems.
 Manual, 216 pages

SH19-0062

PROSPRO III (MPX/1800) PROCESS SYSTEMS PROGRAM, OPERATOR CONSOLE OPERATIONS MANUAL - PRPQ P73015, PROG. NO. 5799-ABP
 The IBM 1892 Process Operator Consoles (RPQ C08400) provide interactive man-machine-process communications, display status and dynamic information, and function with printers to supply the information concerning the process that is necessary for control.

This manual describes the operation of the IBM 1892, Model 11, Process Operator Console with the PROSPRO III System. The use and/or function of each button and display are described.
 Manual, 72 pages

SH19-0063

PROSPRO III (MPX/1800) PROCESS SYSTEMS PROGRAM PROGRAM DESCRIPTION MANUAL - PRPQ P73015, PROG. NO. 5799-ABP
 This manual describes the generation of a PROSPRO III system, the card maintenance procedures, and programming aids which can assist users in implementing PROSPRO III for a specific application.

This programming RPQ is available on special quotation only (see inside front cover).

Included in this manual are discussions of considerations which must be taken into account in order to interface control instrumentation to the IBM 1800 Data Acquisition and Control System operating under PROSPRO III.
 Manual, 216 pages

GH19-0064

PROSPRO III (MPX/1800) (PROCESS SYSTEMS PROGRAM), PROGRAM RPQ P73015, PROGRAM NO. 5799-ABP PROGRAMMING RPQ SPECIFICATIONS

These are the specifications for Process Systems Program (PROSPRO III) (MPX/1800), Program RPQ P73015, Program No. 5799-ABP.
 Flyer, 4 pages

GH20-0208

1800/1130 CONTROL OPTIMIZATION PROGRAM (COP/1800-1130) (1800-CC-01X) APPLICATION DESCRIPTION

This is a general purpose, nonlinear optimization program with features that make it particularly suited to online use in an optimizing process control system.

This manual describes the methods used by COP/1800 1130 and features of the program.
 Manual, 40 pages

*N GH20-0212

1800 VEHICULAR TRAFFIC CONTROL SYSTEM (1800-UG-06X) VERSION 2 APPLICATION DESCRIPTION

In urban traffic environments, inefficient methods of controlling signals result in costly delays to the motoring public. Since the situation can only become worse as long as inefficient methods are in use, a serious need arises for a careful analysis of control methods. There is currently a lack of consistent rules for setting traffic signal timings even under the traditional fixed-time method, which has lasted to date without many innovations in spite of the fact that urban traffic has increased sharply since the inception of the traffic signals.

The 1800 Traffic Control System is designed to increase the efficiency of the existing streets by selecting the appropriate signal settings as directed by the traffic conditions currently on the street. THIS PROGRAM SYSTEM IS MODULAR AND FLEXIBLE TO ALLOW FOR SYSTEM GROWTH AND THE USE OF MORE COMPLEX TRAFFIC CONTROL TECHNIQUES.

This publication contains a general description of the application, machine configuration, a general systems chart, and the data requirements for the use of the system.
 Manual, 28 pages

GH20-0261

1800 PROCESS SUPERVISORY PROGRAM (PROSPRO/1800) APPLICATION DESCRIPTION, PROG. NO. 1800-CC-02X

PROSPRO/1800 is a programming language for the process industries which allows the user to describe his process to be controlled and the desired control strategy, using a "fill-in-the-blanks" technique.

This manual describes PROSPRO/1800 and features of the program.
 Manual, 20 pages

GH20-0335

1800 VEHICULAR TRAFFIC CONTROL SYSTEM - VERSION 2 APPLICATION PROGRAM DESCRIPTION MANUAL - PROGRAM NUMBER 1800-UG-06X

In urban traffic environments, inefficient methods of controlling signals result in costly delays to the motoring public. Since the situation can only become worse as long as inefficient methods are in use, a serious need arises for a careful analysis of control methods. There is currently a lack of consistent rules for setting traffic signal timings even under the traditional fixed-time method, which has lasted to date without many innovations in spite of the fact that urban traffic has increased sharply since the inception of the traffic signals.

The 1800 Vehicular Traffic Control System is designed to increase the efficiency of the existing streets by selecting the appropriate signal settings as directed by the traffic conditions currently on the street. This program system is modular and flexible to allow for system growth and the use of more complex traffic control techniques.

This publication presents a program abstract, a system flowchart, a description of data to define traffic systems, and program modification aids.
 Manual, 56 pages

GH20-0336

1800 VEHICULAR TRAFFIC CONTROL SYSTEM (1800-UG-06X) VERSION 2 OPERATIONS MANUAL

This manual describes how to load and operate the Traffic Control System. This includes the loading procedures for all required tables, the assembly procedure, the loading of the Traffic System on the disk, and all online operations. All of the input data for loading these tables and system described in the User's Manual must be generated before online operation.
 Manual, 40 pages

GH20-0351

1800/1130 CONTROL OPTIMIZATION PROGRAM (COP/1800-1130) VERSION 2 (1800-CC-01X) PROGRAM DESCRIPTION AND OPERATIONS

This is a general purpose, nonlinear optimization program with features that make it particularly suited to online use in an optimizing process control system.

This manual describes the program and its features, procedures for preparing the program for use (system generation) and the use of the program.
 Manual, 72 pages

GH20-0472

1800 PROCESS SUPERVISORY PROGRAM (PROSPRO/1800) PROCESS OPERATOR'S MANUAL, PROG. NO. 1800-CC-02X

PROSPRO/1800 is a programming language for the process industries which allows the user to describe his process to be controlled and the desired control strategy, using a "fill-in-the-blanks" technique.

This manual describes the use of PROSPRO/1800 from the standpoint of the process operator. Operation of the console keyboard is described, as well as various 1800 console procedures.
 Manual, 16 pages

GN20-0473

1800 PROCESS SUPERVISORY PROGRAM (PROSPRO/1800)
(1800-CC-02K) LANGUAGE SPECIFICATIONS MANUAL
 PROSPRO/1800 is a programming language for the process industries which allows the user to describe his process to be controlled and the desired control strategy, using a "fill-in-the-blanks" technique.
 This manual presents detailed information concerning the use of the standard data forms.
 Manual, 96 pages

GN20-0474

1800 PROCESS SUPERVISORY PROGRAM (PROSPRO/1800)
(1800-CC-02K) USER'S MANUAL
 PROSPRO/1800 is a programming language for the process industries which allows the user to describe his process to be controlled and the desired control strategy, using a "fill-in-the-blanks" technique.
 This manual describes the procedures to be followed for system generation of PROSPRO/1800.
 It is assumed the reader has knowledge of the 1800 Data Acquisition and Control System and the 1800 Time Sharing Executive System.
 Manual, 28 pages

GN20-0507

APPLICATION BIBLIOGRAPHY FINANCE AND SECURITIES INDUSTRIES
 The purpose of this bibliography is to list and categorize IBM application publications and programs that are pertinent to finance and securities industries.

- o Section I classifies these publications and programs by application or industry.
- o Section II contains abstracts of application publications, in form number sequence.
- o Section III contains abstracts of Field Developed Programs.
- o Section IV contains abstracts of Installed User Programs.

Promotional publications pertinent to the finance and securities industries are listed in Section V.
 Manual, 44 pages

GN20-0522

DISTRIBUTION INDUSTRIES BIBLIOGRAPHY
 The purpose of this bibliography and the associated classification system is to list and categorize IBM application publications that are pertinent to distribution industries. Section I lists these publications by application or industry. Section II contains an abstract of each publication, in form number sequence.
 A periodic Bibliography of Application Publications (BAP) Newsletter (GN20-1853) is published to keep the bibliography up to date. The newsletter is divided into two sections. Section I is an updated listing of application publications by application or industry. This section also includes any corrections to the bibliography and a list of superseded publications. Section II contains an abstract of each publication not included in the last published bibliography.
 Manual, 52 pages

GN20-0530

PUBLIC UTILITY INDUSTRIES BIBLIOGRAPHY
 The purpose of this bibliography and the associated classification system is to list and categorize IBM application publications that are pertinent to the telephone, and gas and electric industries. Section I lists these publications by application or industry. Section II contains an abstract of each publication, in form number sequence.
 A periodic Bibliography of Application Publications (BAP) Newsletter (GN20-1866) is published to keep the bibliography up to date. The newsletter is divided into two sections. Section I is an updated listing of application publications by application or industry. This section also includes any corrections to the bibliography and a list of superseded publications. Section II contains an abstract of each publication not included in the last published bibliography.
 Manual, 24 pages

GN20-0531

BIBLIOGRAPHY OF APPLICATION PUBLICATIONS - MEDIA INDUSTRIES
 The purpose of this bibliography and the associated classification system is to list and categorize IBM application publications that are pertinent to media industries. Section I lists these publication by application or industry. Section II contains an abstract of each publication, in form number sequence.
 A periodic Bibliography of Application Publications (BAP) Newsletter (GN20-1867) is published to keep the bibliography up to date.
 As an aid to the reader, Section III lists promotional publications, Section IV lists field developed programs, and Section V lists installed user programs pertinent to media industries.
 A periodic Bibliography of Application Publications (BAP) Newsletter (GN20-1867) is published to keep the bibliography

up to date.
 Manual, 18 pages

GN20-0536

BIBLIOGRAPHY OF APPLICATION PUBLICATIONS INSURANCE INDUSTRY
 The purpose of this bibliography and the associated classification systems is to list and categorize IBM application publications that are pertinent to the insurance industry. Section I lists these publications by application or industry. Section II contains an abstract of each publication, in form number sequence.
 A periodic Bibliography of Application Publications (BAP) newsletter (GN20-1869) is published to keep the bibliography up to date. The newsletter is divided into two sections. Section I is an updated listing of application publications by application or industry. This section also includes any corrections to the bibliography and a list of superseded publications. Section II contains an abstract of each publication not included in the last published bibliography.
 Manual, 36 pages

GN20-0715

IBM CLINICAL LABORATORY DATA ACQUISITION SYSTEM (CLDAS)
APPLICATION DESCRIPTION MANUAL, PROG. NO. 5718-H11
 The IBM Clinical Laboratory Data Acquisition System applies the capabilities of the IBM 1800 DATA Acquisition and Control System to the problems of the clinical laboratory. The system is designed to monitor laboratory instrumentation, convert raw instrument readings into the final determinations, and present these results to the technologist in a printed report. It is intended primarily for the continuous flow type of single and multiple channel automatic analyzers; however, its modular design facilitates the incorporation of other instruments into the system. It is an online data acquisition and analysis system which provides a firm base for the development of a laboratory information system.
 The purpose of this manual is to provide a general description of the application, to outline the system advantages and to provide information useful in planning for installation of the application.
 Manual, 32 pages

GN20-0724

1800 CHROMATOGRAPH MONITORING PROGRAM
APPLICATION DESCRIPTION MANUAL, PROG. NO. 5718-XX1
 This briefly describes a program capable of monitoring a number of chromatographs simultaneously in real time. The system provides for scanning of the chromatographs, analyzing the resulting spectrum, and producing the reports. It is especially suited to the quality control laboratory environment.
 Program Product Manual, 24 pages

SH20-0731

IBM CLINICAL LABORATORY DATA ACQUISITION SYSTEM (CLDAS)
PROGRAM REFERENCE MANUAL PROGRAM NUMBER 5718-H11
 The IBM Clinical Laboratory Data Acquisition System applies the capabilities of the IBM 1800 Data Acquisition and Control System to the problems of the clinical laboratory. The system is designed to monitor laboratory instrumentation, convert raw instrument reading into the final determinations, and present these results to the technologist in a printed report. It is intended primarily for the continuous flow type of single and multiple channel automatic analyzers. However, its modular design facilitates the incorporation of other instrument types into the system. It is an online data acquisition and analysis system which provides a firm base for the development of a laboratory information system.
 The purpose of this manual is to provide a system description, program documentation, installation instructions, and operating procedures.
 Manual, 72 pages

SH20-0732

PROSPRO II (TSX/1800) PROCESS SYSTEMS PROGRAM
LANGUAGE SPECIFICATIONS MANUAL, PROG. NO. 5718-P81
 PROSPRO II is a programming system for the IBM 1800 Data Acquisition and Control System. The system provides the user with a group of eleven standardized forms which are used to specify the parameters of data acquisition and control for industrial processes. Through the use of these forms scanning of process signals can be defined, limit checking can be performed, both supervisory and direct digital control (DDC) can be implemented, and advanced control techniques can be employed.
 The system supports the IBM 1892 Model 11 Process Operator's Console which provides comprehensive man-machine-process interactive communications.
 This manual provides detailed descriptions of the control algorithms that are used, of the ways to complete the forms, and illustrates the use of the system with several example problems.
 Manual, 212 pages

SH20-0733

PROSPRO II (TSX/1800) PROCESS SYSTEMS PROGRAM: PROCESS OPERATOR'S CONSOLE OPERATIONS MANUAL, PROG. NO. 5718-P81
The IBM 1892 Process Operator's Console (RPOCG8400) provides interactive man-machine-process communications, it displays status and dynamic information, and it functions with printers to supply the information concerning the process that is necessary for control.
This manual describes the operation of the 1892 Model 11 Process Operator's Console with the PROSPRO II system. The use and/or function of each button and display is described.
Manual, 72 pages

SH20-0734

PROSPRO II (TSX/1800) PROCESS SYSTEMS PROGRAM: PROGRAM DESCRIPTION MANUAL, PROG. NO. 5718-P81
This manual describes the generation of a PROSPRO II system, the card maintenance procedures, and programming aids which can assist users in implementing PROSPRO II for a specific application.
Included in this manual are discussions of considerations which must be taken into account in order to interface control instrumentation to the IBM 1800 Data Acquisition and Control System operating under PROSPRO II.
Manual, 112 pages

GH20-0760

INTRODUCTION TO THE 1800 REPORT PROGRAM GENERATOR PROG. NO. 5718-RG1
The 1800 Report Program Generator (RPG) significantly enhances the commercial data processing capability of the IBM 1800 Data Acquisition and Control System. The 1800 RPG operates under the IBM 1800 Multiprogramming Executive System (MPX), and provides a language which is easy to learn and specifically oriented to commercial applications such as accounts receivable, payroll, inventory accounting, and sales analysis. In addition, a file conversion utility is provided that enables RPG to be used for generating operating reports from sensor-based disk data files created by FORTRAN-coded online programs.
A Report Program Generator for the 1800 Data Acquisition and Control System is useful in medium and small establishments where both sensor-based data acquisition and control functions and commercial data processing functions are needed. This manual provides an introduction to the functional capabilities of IBM 1800 RPG and operational procedures for its use.
Manual, 24 pages

GH20-0772

CLINICAL LABORATORY MANAGEMENT SYSTEM (CLMS) APPLICATION DESCRIPTION MANUAL PROGRAM NUMBER 5718-H12
The IBM Clinical Laboratory Management System applies the capabilities of the IBM 1800 Data Acquisition and Control System to the problems of the clinical laboratory. It is a system of files and procedures designed to satisfy basic information processing requirements of clinical laboratories. Utilizing the Clinical Laboratory Data Acquisition System (CLDAS) Program Product (5718-H11) or its equivalent for the data acquisition function, it provides a broad base for an information management system. CLMS directs and controls the flow of information from receipt of the initial requisition for a test until the final result has been developed and is ready for reporting. CLMS operates under the IBM 1800 Time Sharing Executive System (see GC26-3703) on the IBM 1800 Data Acquisition and Control System.
The purpose of this manual is to provide a general description of the application, to outline the system advantages and to provide information useful in planning for installation of the application.
Manual, 40 pages

SH20-0774

1800 REPORT PROGRAM GENERATOR (RPG) LANGUAGE SPECIFICATIONS MANUAL, PROG. NO. 5718-RG1
This reference publication contains fundamentals of RPG programming and language specifications for the IBM 1800 Multiprogramming Executive Operating System. For information on RPG that is beyond the purpose of this language publication, see IBM 1800 RPG OPERATIONS MANUAL (SH20-0779).
Manual, 236 pages

SH20-0779

1800 REPORT PROGRAM GENERATOR (RPG) OPERATIONS MANUAL PROGRAM NUMBER 5718-RG1
1800 RPG consists of a problem-oriented, symbolic programming language and a compiler program. The compiler program reads the program specifications, written in the RPG symbolic language, from cards and produces an object program in machine language that can be used to perform a particular application. Both compilation and execution of object programs are under control of the IBM 1800 Multiprogramming Executive (MPX) Operating System, Version I.
Manual, 76 pages

SH20-0823

IBM CLINICAL LABORATORY MANAGEMENT SYSTEM (CLMS) 5718-H12 PROGRAM DESCRIPTION MANUAL
The IBM Clinical Laboratory Management system applies the capabilities of the IBM 1800 Data Acquisition and Control System to the problems of the clinical laboratory. It is a system of files and procedures designed to satisfy basic information processing requirements of clinical laboratories. Utilizing the Program Product Clinical Laboratory Data Acquisition System (CLDAS), (5718-H11) or its equivalent for the data acquisition function, it provides a broad base for an information management system. CLMS directs and controls the flow of information from receipt of the initial requisition for a test until the final result has been developed and is ready for reporting. CLMS operates under the IBM 1800 Time-Sharing Executive System (GC26-6990) on the 1800 Data Acquisition and Control System.
This manual gives specific information about CLMS that enables the user to understand the functions of the system and to prepare for and install it.
Manual, 144 pages

SH20-0831

CLINICAL LABORATORY MANAGEMENT SYSTEM (CLMS) 5718-H12 OPERATIONS MANUAL
This manual is intended for the personnel in charge of operating the system and gives a concise description of the system at the operational level, with sufficient detail for normal operation. (Each of the functions performed by CLMS is described in detail in the Systems Manual.) The present manual refers the user to other manuals, as necessary.
Manual, 88 pages

SH20-0861

1800 CHROMATOGRAPH MONITORING PROGRAM, OPERATIONS MANUAL PROGRAM NUMBER 5718-XX1
This manual describes the steps required to install the Chromatograph Monitoring Program, to define analytical procedures, and to initiate or terminate a chromatograph run.
Manual, 92 pages

SH20-0862

1800 CHROMATOGRAPH MONITORING PROGRAM, PROGRAM DESCRIPTION, PROGRAM NUMBER 5718-XX1
This manual describes the general organization, the input and output data, and the processing methods used in the Chromatograph Monitoring Program. An appendix lists the disk file formats, and the core load names and their functions.
Manual, 92 pages

GH20-0881

1800 DISTRIBUTED SYSTEM PROGRAM, GENERAL INFORMATION MANUAL, PROGRAM NUMBER 1800-SV-003
This manual describes a group of subroutines and macro instructions that facilitate operation of interconnected IBM 1800 Data Acquisition and Control Systems and IBM System/7s. The manual also contains a description of programs that permit conversational entry of remote jobs into the IBM 1800 batch-processing stream.
Manual, 52 pages

GH20-0884

MPX SPOOLING, GENERAL INFORMATION MANUAL, PROGRAM NUMBER 1800-SV-002
This package consists of four modules that are augmentations of the 1800 Multiprogramming Executive (MPX) Operating System. It allows for more efficient use of system resources, the sharing of serial-type devices in a coordinated manner, and greater overall system throughput. It incorporates the following features:

1. Dynamic allocation of file space.
2. Logging of analog data to disk at equal time increments.
3. Buffering of printer and/or plotter output to disk from Basic Level programs executed in variable core.

The overall package is specifically suited to dynamic installations in which an efficient use of disk, analog features, and printer and/or plotter resources will greatly increase system throughput and availability of variable core for computational purposes. A user may wish a minimum of programming effort log analog data.
Manual, 24 pages

GH20-0970

BIBLIOGRAPHY OF APPLICATION PUBLICATIONS MEDICAL INDUSTRIES
The purpose of this bibliography is to list and categorize IBM application publications that are pertinent to the medical industry.
A periodic Bibliography of Application Publications (BAP) Newsletter is published to keep the bibliography up to date.

Bibliography, 28 pages

Program Product Specification, 2 pages

SH20-0974

1800/2260 DATA ENTRY SYSTEM (PROGRAMMING RPQ MA0718): PROGRAM DESCRIPTION AND OPERATIONS MANUAL, PROG. NO. 5799-AAK
The 1800/2260 Data Entry System has been designed to simplify greatly the utilization of the IBM 2260 Display Station when used in conjunction with the IBM 1800 Data Acquisition System. This programming RPQ is available on special quotation only (see inside front cover).

The system provides a flexible 1800/2260 interface under the multiprogramming executive (MPX) operating system that significantly reduces the programming requirements necessary to support conversation. It permits full online use of the multiprogramming while servicing up to 16 of the 2260 units for each 2848 Display Control Unit in full conversational mode. Only one 2848 per selector channel is permitted. It also provides control options that simplify the tasks of the 2260 operator.

This manual is designed to be used by programmers, computer operators, and 2260 operators. Additional background information is referenced in the Program Directory.
Programming RPQ Manual, 112 pages

GH20-0977

MPX SPOOLING, PROGRAM DESCRIPTION MANUAL, PROGRAM NUMBER 1800-SV-002

MPX SPOOLING consists of four modules which are augmentations of the 1800 Multiprogramming Executive Operating System (MPX). It allows for more efficient use of system resources, the sharing of serial-type devices in a coordinated manner, and greater overall system throughput. It incorporates the following features:

1. Dynamic allocation of file space
2. Logging of analog data to disk at equal time increment
3. Buffering of all printer and/or plotter output to disk

This manual describes the facilities provided by MPX SPOOLING as an augmentation to the IBM 1800 Multiprogramming Executive Operating System (MPX). The concepts and techniques for MPX SPOOLING are explained and the various design considerations which should be taken into account in building an MPX SPOOLING system are discussed.
Manual, 96 pages

GH20-0984

MPX SPOOLING OPERATIONS MANUAL, PROGRAM NUMBER 1800-SV-002
MPX SPOOLING is an augmentation of the 1800 Multiprogramming Executive System which allows for more efficient utilization of system resources and greater overall system throughput. Devices requiring access by multiple users, but which are basically serial in nature, are shared in a manner which largely isolates each user.

This manual explains the procedures to be followed for system generation of an MPX system incorporating the desired MPX SPOOLING modules. Operating procedures are described for executing the various functions incorporated in the spooling utility core load, the initialization of open-ended files, the use of file utility core loads, and the implementation of analog data logging.

It is assumed the reader has knowledge of the 1800 Data Acquisition and Control System and the 1800 Multiprogramming Executive System.
Manual, 52 pages

GH20-1142

1800 DISTRIBUTED SYSTEM PROGRAM, OPERATIONS GUIDE, PROGRAM NUMBER 1800-SV-003

This manual explains the procedures to be followed for system generation of an MPX system incorporating the desired 1800 Distributed Program modules.

It is assumed the reader has knowledge of the 1800 Data Acquisition and Control System and the 1800 Multiprogramming Executive System and that he is familiar with the IBM 1800 Distributed System Program Reference Manual (GH20-1143).
Manual, 62 pages

GH20-1143

IBM 1800 DISTRIBUTED SYSTEM PROGRAM - PROGRAM REFERENCE MANUAL - PROGRAM NUMBER 1800-SV-003

This manual describes the functional specifications of a group of subroutines and macro instructions which facilitate operation of an IBM 1800 Data Acquisition and Control System connected to multiple systems/7s.

The manual also contains the functional specifications of programs which permit conversational entry of remote jobs into the IBM 1800 batch-processing stream. Appendices list the commands and error messages of the conversational remote job entry programs, the codes used in text transmission, and the error messages that may occur.
Manual, 160 pages

GH20-4000

PROSPRO II (TSX/1800) PROCESS SYSTEMS PROGRAM: PROGRAM PRODUCT SPECIFICATIONS, PROG. NO. 5718-P81
No abstract available.

GH20-4086

IBM 1800 CHROMATOGRAPH MONITORING PROGRAM FUNCTIONAL DESCRIPTION - PROGRAM PRODUCT 5781-XX1

This Program Product Functional Description (PPFD) describes the functional capabilities of the subject Program Product, which has a Programming Service Classification of C.
Flyer, 2 pages

GH20-4093

1800 REPORT PROGRAM GENERATOR (RPG) FUNCTIONAL DESCRIPTION, PROGRAM NUMBER 5718-RC1

This Program Product Functional Description (PPFD) describes the functional capabilities of the subject Program Product, which has a Programming Service Classification of C.
Flyer, 2 pages

GH20-4107

1800/2260 DATA ENTRY SYSTEM (PROGRAMMING RPQ MA0718): RPQ SPECIFICATIONS, PROG. NO. 5799-AAK

The Program Product Specifications (PPS) describe the warranted specifications of the subject Program Product.
Specifications Sheets, 2 pages

GH20-4145

IBM 1130 AND 1800 SUBROUTINE LIBRARY MATHEMATICS (SL-MATH) SPECIFICATIONS - PROGRAM NUMBER 5711-XM2

The Program Product Specifications (PPS) describe the warranted specifications of the subject Program Product.
Specification Sheet, 2 pages

GH20-4402

CLINICAL LABORATORY MANAGEMENT SYSTEMS (CLMS) FUNCTIONAL DESCRIPTION - PROGRAM PRODUCT 5718-B12

This Program Product Functional Description (PPFD) describes the functional capabilities of the subject Program Product, which has a Programming Service Classification of C.
Sheet, 2 pages

GJD1-3070

MICROFICHE - SOURCE LISTING

IBM 1800 MPX MULTIPROGRAMMING EXECUTIVE SYSTEM 1800-OS-010
This microfiche contains source listings of program(s) referenced in title.
Microfiche

GL26-2114

VIDEO DISPLAY WITH IBM 1800

This folder describes the Video Adapter - a family of RPQ's, its applications, video control unit, video display and functional RPQ elements: Video Display Basic, RPQC08793; Video Display Channel, RPQC08794, and Video Display Expander, RPQC08795 with its three expanders: Alpha Character Format, Point Plot Format and Bitgraphic Format. Additional flexibility pointers are mentioned.
Folder, 6 pages

GX20-1734

1130 - 1800 BINARY CARD TEMPLATE

This template provides an easy method of reading binary-coded program cards when they are punched in any type of IBM card. It is a clear plastic template of IBM Electro J 74301.
Card-Size Template

GX20-1755

IBM PROSPRO/1800 MISCELLANEOUS DATA FORM, PROGRAM NUMBERS 5718-P81, 1800-CC-02X

This form used with the PROSPRO/1800 System Padded Form, 25 sheets per pad.

GX20-8020

FLOWCHARTING TEMPLATE

This plastic template provides cut-out shapes for drawing standard symbols used frequently in flowcharting computer systems and programs. It is enclosed in an envelope outlining definitions of symbols and use of the template. More details are given in the Data Processing Techniques manual on FLOWCHARTING TECHNIQUES (GC20-8152).
Template, 1 unit size

GX26-1587

IBM REFERENCE CARD, DECIMAL/HEXADECIMAL INTEGER CONVERSION CHART

This chart is used to convert decimal numbers to hexadecimal and hexadecimal numbers to decimal.

The chart covers the range of integers from 0000 to 4095. Additional instructions are provided to convert decimal and hexadecimal numbers beyond this range. Reference Card, 8 1/2 x 29, 7 folds

GX26-1588

IBM REFERENCE CARD, DECIMAL/HEXADECIMAL FRACTION CONVERSION CHART

This chart is used to convert decimal fractions to hexadecimal and hexadecimal fractions to decimal.

The chart covers the range of fractions from 0.00000000 to 0.00075586. Additional instructions are provided to convert decimal and hexadecimal fractions beyond this range. Reference Card, 8 1/2 x 29, 7 folds, 2 sides

GX26-1594

IBM 1800 REFERENCE SUMMARY MPX CONTROL STATEMENTS PROGRAM NUMBER 1800-OS-010

This publication contains reference data regarding the control statements used with the IBM 1800 Multiprogramming Executive Operating System (MPX), Version 2. More detailed information on all of the control statements will be found in the IBM 1800 Multiprogramming Executive Operating System Programmer's Guide, Form GC26-3720. Reference Handbook, 44 pages

GX26-3573

IBM PHYSICAL PLANNING TEMPLATE, 1800 DATA ACQUISITION AND CONTROL SYSTEM

This template provides a scaled representation of the physical planning specifications for the IBM 1800 Data Acquisition and Control System.

Template, 8-1/2 x 11 inches, 4 pages

GX26-3635

1800 ANALOG INPUT SIGNAL CHART

This chart provides space for entering data concerning analog inputs signals to the 1800 system. The form should be filled out as completely as possible. Entries for each signal should be confined to one numbered line. Abbreviations can be used wherever appropriate. Padded form, 25 sheets

GX26-3636

1800 ANALOG OUTPUT SIGNAL CHART

This chart provides space for entering data concerning analog output signals from the 1800 System.

Padded Form, 8-1/2 x 11, 2 sides, 25 sheets

GX26-3637

1800 DIGITAL INPUT SIGNAL CHART

This chart provides space for entering data concerning digital input signals to the IBM 1800 Systems.

Padded Form, 8-1/2 x 11, 2 sides, 25 sheets

GX26-3638

1800 DIGITAL OUTPUT SIGNAL CHART

This chart provides space for entering data concerning digital output signals from the 1800 System.

Padded Form, 8-1/2 x 11, 2 sides, 25 sheets

GX26-3780

IBM 1130/1800 ASSEMBLER-LANGUAGE STATEMENTS SUMMARY (1130 DM2 & 1800 MPX)

This publication summarizes the assembler-language statements used to write programs for the IBM 1130 Disk Monitor System, Version 2 (DM2), and the IBM 1800 Multiprogramming Executive (MPX) Operating System, Version 3. It is intended as a quick reference aid for programmers who are familiar with the assembler language as described in IBM 1130/1800 Assembler Language (GC26-3778). Manual, 60 pages

GX26-5624

IBM 1800 REFERENCE SUMMARY: SYSTEM REFERENCE DATA

This publication provides a quick reference for programmers and operators of the IBM 1800 Data Acquisition and Control System. The user should be thoroughly familiar with the IBM 1800 FUNCTIONAL CHARACTERISTICS, Form GA26-5918, before using this publication. Reference Summary, 2 folds, 2 sides

GX28-6384

IBM FORTRAN IV REFERENCE CARD

This reference card contains FORTRAN IV information for IBM 1130 System and IBM 1800 System (1130/1800), IBM System/3, IBM System/360 Disk Operating System (DOS), IBM System/360 Operating System (S, H, G), H Extended, and Code and Go).

IBM System/360 Time Sharing System (TSS/360), IBM Call/360-OS (CALL/360), American National Standard FORTRAN, X3.9-1966, and American National Standard Basic FORTRAN, X3.10-1966. This card is intended to be used as a secondary reference. The basic program documentation is the authoritative source and will be the first to reflect any changes and improvements to the FORTRAN IV language. Reference Card, 10 folds

GX28-7127

FORTRAN CODING FORM

This is a form for coding FORTRAN statements. Padded Form, 8 1/2 x 14, one side, 25 sheets

GX33-8000

1130/1800 ASSEMBLER CODING FORM

A programmer's input/card punching coding form for the 1130/1800 Assembler with spaces for label, operation, F, I, Operands and Remarks. Form, 8-1/2 x 11 inches, 1 part, 25 sheets per pad.

LY80-0534

1800 REPORT PROGRAM GENERATOR (RPG) SYSTEM MANUAL, VOLUME 2: LISTINGS. PROC. NO. 5718-RGT, FEATURE NO. 8806

This microfiche manual contains the listings for the 1800 Report Program Generator (RPG). It is available only in the microfiche edition. (The hard-copy volume 1 of the system manual contains the functional descriptions of program modules listed here.) Microfiche

GY80-0799

IBM 1800 DISTRIBUTED SYSTEM PROGRAM: LISTINGS MICROFICHE PROGRAM NUMBER 1800-SV-003

This group of microfiche cards contains listings of the program mentioned in the title. Microfiche

LY19-0014

PROSPRO III (MPX/1800) PROCESS SYSTEMS PROGRAM, SYSTEM LOGIC MANUAL - PROGRAM NUMBER 5799-ABP

This manual contains descriptions of programs that comprise the PROSPRO III System, layout and descriptions of core resident Common Blocks, layout and descriptions of disk files, cross references to called and calling programs arranged by primary name and alternate entry points, cross reference lists of calls to core load programs, and information concerning minor modifications that have been made to the System Multiprogramming Executive (MPX) to better accommodate some of the special requirements of this PROSPRO III System. Manual, 204 pages

GY20-0007

VEHICULAR TRAFFIC CONTROL

The purpose of this manual is to introduce the salesman and the systems engineer to existing traffic control systems and to familiarize them with the advantages presented by the use of a digital computer in traffic systems. Manual, 48 pages

GY20-0082

1800 VEHICULAR TRAFFIC CONTROL SYSTEM: SYSTEM MANUAL, PROG. NO. 1800-UG-06X, VERSION 2

This manual provides detailed information to assist the user in gaining a more thorough knowledge of the programming logic employed in the application. It contains, for each program, flowcharts, flowchart narrative, significant labels, pertinent instructions in the system, and program listings. Manual, 372 pages

GY20-0110

1800/1130 CONTROL OPTIMIZATION PROGRAM (COE/1800-1130) VERSION 2 (1800-CC-01X) - SYSTEM MANUAL

This manual provides detailed information to assist the user in gaining a more thorough knowledge of the mathematical methods and programming logic employed in the program.

The manual contains: a description of the overall organization of the program; a description of the linear programming (LP) algorithms employed; a list of program switches used; program flowcharts; and flowchart narrative. Manual, 180 pages

GY20-0128

1800 PROCESS SUPERVISORY PROGRAM (PROSPRO/1800) SYSTEM MANUAL PROGRAM NUMBER 1800-CC-02X

This manual provides detailed information to assist the user in gaining a more thorough knowledge of the programming logic employed in the application.

This manual presents a flowchart narrative, flowcharts, program listings, record layouts, and the organization of disk data files. Manual, 570 pages

LY20-0502

PROSPRO II (TSX/1800) PROCESS SYSTEMS PROGRAM SYSTEM MANUAL
VOLUME II PROGRAM LISTINGS
PROGRAM NUMBER 5718-P81 FEATURE CODE 8000
 This manual contains program listings for all routines in PROSPRO II that are contained in object decks as distributed by the IBM Program Information Department.
 Manual, 388 pages

Manual, 28 pages

LY20-0503

PROSPRO II (TSX/1800) PROCESS SYSTEMS PROGRAM SYSTEM MANUAL
VOLUME I: PROGRAM LOGIC
PROGRAM NUMBER 5718-P81 FEATURE CODE 8000
 This manual contains descriptions of programs that comprise the PROSPRO II System, layout and descriptions of core resident Common Blocks, layout and descriptions of disk files, cross references to called and calling programs arranged by primary name and alternate entry points, cross reference lists of calls to core load programs, and information concerning minor modifications that have been made to the Time-Sharing Executive (TSX) System to better accommodate some of the special requirements of this PROSPRO II System.
 Manual, 165 pages

GY20-0803

1800 DISTRIBUTED SYSTEM PROGRAM LOGIC MANUAL
PROGRAM NUMBER 1800-SV-003
 This manual describes the logic specifications for the IBM 1800 subroutines and macros, and the IBM System/7 macros that comprise the IBM 1800 Distributed System Program.
 Manual, 404 pages

*N

LY20-0533

1800 REPORT PROGRAM GENERATOR (RPG) SYSTEM MANUAL VOLUME I
PROGRAM NUMBER 5718-RG1 FEATURE CODE 8003
 This publication describes the internal logic of the RPG (Report Program Generator) compiler for the 1800 Multiprogramming Executive (MPX) Operating System. It is intended for use by persons involved in program maintenance and by system programmers who are altering the program design. Program logic information is not necessary for the use and operation of the program; therefore, distribution of this publication is limited to those with the aforementioned requirements.
 Manual, 240 pages

GY26-3620

IBM 1130/1800 CARD/PAPER TAPE PROGRAMMING SYSTEMS, PROGRAM LOGIC MANUAL
 This publication describes the internal logic of the 1130/1800 Card and Paper Tape Programming Systems: Assembler, FORTRAN Compiler, Library Subroutines, and Utility Routines. It is intended for use by persons involved in program maintenance, and system programmers who are altering the program design. Program logic information is not necessary for the use and operation of the program; therefore, distribution of this publication is limited to those with the aforementioned requirements. This volume covers program numbers: 1130/1800-UT-001/2, 1130-LM-001/2, 1800-LM-003/4, 1130-SP-001/2, 1130-LM-001/2, 1800-LM-003/4, 1130-SP-001/2, 1800-AS-005/6, 1130-FO-001/2, 1800-FO-007/8
 Program Logic Manual, 206 pages

GY26-3702

IBM 1800 TIME-SHARING EXECUTIVE SYSTEM
PROGRAM LOGIC MANUAL, PROG. NO. 1800-OS-001, VERSION 3
 This publication describes the internal logic of the IBM 1800 TSX System. The contents are intended for use by persons involved in program maintenance and for system programmers who are altering the program design. Program logic information is not necessary for the use and operation of the TSX system.
 Program Logic Manual, 398 pages

LY20-0594

1800 CHROMATOGRAPH MONITORING PROGRAM, SYSTEM MANUAL
PROGRAM NUMBER 5718-YX1 FEATURE CODE 8002
 This manual describes the function of each of the programs, the variables in Skeleton and Core Load Common, and the contents of the disk files used by the Chromatograph Monitoring Program. Flowcharts are provided for each program.
 Manual, 160 pages

GY26-3726

IBM 1800 MULTIPROGRAMMING EXECUTIVE OPERATING SYSTEM, PROGRAM LOGIC MANUAL (PROGRAM NUMBER 1800-OS-010)
 This publication describes the internal logic of the IBM 1800 MPX Programming System. The contents are intended for use by persons involved in program maintenance and for system programmers who are altering the program design. Program logic information is not necessary for the use and operation of the MPX system; therefore, distribution of this manual is limited to those who are performing the aforementioned functions.
 Program Logic Manual, 636 pages

LY20-0649

CLINICAL LABORATORY MANAGEMENT SYSTEM (CLMS): SYSTEM MANUAL,
PROG. NO. 5718-H12, FEATURE NO. 8005
 The IBM Clinical Laboratory Management System applies the capabilities of the IBM 1800 Data Acquisition and Control System to the problems of the clinical laboratory. It is a system of files and procedures designed to satisfy basic information processing requirements of clinical laboratories. Utilizing the Clinical Laboratory Data Acquisition System (CLDAS) program product (5718-H11) or its equivalent for the data acquisition function, CLMS provides a broad base for an information management system. CLMS directs and controls the flow of information from receipt of the initial requisition for a test until the final result has been developed and is ready for reporting. CLMS operates under the IBM 1800 Time Sharing Executive System (see C26-3703) on the IBM 1800 Data Acquisition and Control System.
 The purpose of this manual is to provide detailed description of the functions of CLMS. It is intended for use as a reference document. A SYSTEM MANUAL DIRECTORY is included which outlines the organization of the manual.
 Manual, 842 pages

S2C0-0151

1130/1800 EARLY WARNING MICROFICHE
 Early Warning information consists of the most current service information available which has been extracted from the RETAIN System and reproduced on microfiche.

S2C0-0301

MICROFICHE EARLY WARNING - PROGRAM PRODUCTS, CSP AND SCP
 Early Warning information consists of the most current available service information, which has been extracted from the RETAIN system and reproduced on microfiche.

G310-0012

IBM WORLD TRADE MARKETING PUBLICATIONS KWIC INDEX
 This KWIC (key-word-in-context) index lists publications generally available for distribution or sale to users of IBM data processing products and services. It is the World Trade edition of the IBM Marketing Publications KWIC Index.
 Manual, 168 pages

*N

LY20-0660

1800/2260 DATA ENTRY SYSTEM (PROGRAMMING RPO MA0718): SYSTEM MANUAL, PROG. NO. 5799-AAK
 This manual is intended as a reference for those who maintain or plan to modify the 1800/2260 Data Entry System. This programming RPO is available on special quotation only (see inside front cover). The manual contains detailed program narratives, program flowcharts, and assembly listings.
 Manual, 132 pages

G320-1244

CUSTOMER EDUCATION COURSE CATALOG
 This three-section catalog has been prepared to provide users of IBM data processing equipment with information on the various courses, curriculums, and education materials available to them through IBM Customer Education.
 A. GENERAL INFORMATION: This covers basic enrollment information, terms and conditions of education programs and agreements, location of various education centers and availability of special purpose programs such as
 o Time payments
 o On-site courses
 o Tailored courses [(RPO) Request Price Quotation]
 o Computerized education configurators
 o Education Consulting Services
 B. EDUCATION PLANNING GUIDES: Since it is advantageous to develop an overall education plan that is in line with application implementation or personnel requirements, these flow chart aids have been developed to help the user match the curriculum with his requirements. In this fashion, the user should be able to project his

*N

GY20-0668

MPX SPOOLING SYSTEM MANUAL, PROGRAM NUMBER 1800-SV-002
 This manual describes the internal logic of the MPX SPOOLING augmentation of the IBM 1800 Multiprogramming Executive Operating System (MPX). Such things as core layout, disk layout, utilities, and the function of each program involved are described.
 Manual, 120 pages

LY20-0670

CLINICAL LABORATORY MANAGEMENT SYSTEM (CLMS): MPX FEATURE
6000 CONVERSION MANUAL, PROG. NO. 5718-H12, FEATURE NO. 8007
 No abstract available.

- education schedule with the related tuition for budgetary purposes.
- C. **DETAILED COURSE DESCRIPTIONS:** This section contains the courses offered to users of IBM data processing equipment. The descriptions cover the intended audience, as well as other relevant information. The descriptions have been written to give the reader as much detail as possible to help him select the proper course(s) from the broad spectrum offered.

As can be seen in the Table of Contents, the courses are cross-indexed in three sequences, alphabetic, course code and curriculum.

This catalog obsoletes the following publications in the "IBM Education ... a course of action" series, also known as Course Selection Guide modules.

G520-2327	Systems Science Education
G520-2329	The Operating System
G520-2330	DOS/TOS
G520-2334	1130-1800-System/7
G520-2335	S/360 Model 20 and Unit Record
G520-2336	Industry Applications
G520-2469	Operating System Curriculum Planning

Catalog, 650 pages

G320-1621

IBM MARKETING PUBLICATIONS KWIC INDEX

This reference document contains general information about publications in the Systems Library. It contains three sections as follows:

- 1) alphabetic KWIC index by titles
- 2) index by machine type number
- 3) price list in form number sequence (omitting the first character of the order number)

Reference Index, 192 pages.

GA27

New Abstracts

GA21-9028

IBM 357/1030/2790 BADGE SPECIFICATIONS

This publication provides the specifications for the manufacture of laminated and embossed badges for the IBM 357 and IBM 1030 Data Collection Systems and the IBM 2790 Data Communication System. Included in this publication are: dimensions, a material listing, suggested laminating procedures, quality control measures, and punched-hole registration-checking procedures.

Individual differences in manufacturing equipment may require some modification to time, temperature, and pressure specification; test badges should be manufactured and checked to provide a basis for possible modifications. SRL, 16 pages

GA24-3090

IBM TELEPROCESSING SYSTEMS SUMMARY

This manual contains brief introductory descriptions of IBM teleprocessing units and systems. It provides an overview of these products primarily for executive and supervisory personnel involved in the decision making and planning of data processing systems.

Publications providing detailed information on these devices are listed at the end of each device description. They are also listed in the Systems Reference Library manuals, IBM Teleprocessing Bibliography, GA24-3089, and the IBM System/360 Bibliography, GA22-6822.

Information on IBM Line Adapters and common-carrier supplied communications facilities is contained in Appendix A. Appendix B is a summary of IBM System/360 programming support available for teleprocessing systems.

It is assumed that the reader of this manual has a basic familiarity with data processing systems and data communications concepts.
Systems Reference Library

GA24-3435

PLANNING AND INSTALLATION OF A DATA COMMUNICATION SYSTEM USING IBM LINE ADAPTERS

This reference publication contains information, for systems engineers and installation planning engineers, on the planning and installation of data communications systems that use IBM Line Adapters (modems). A brief introduction to data communication and to the general purposes and functions of line adapters is presented. Included is technical information applicable to an in-plant user-installed data communications system, and to the local facilities of common carriers. Specifications and requirements are provided for each IBM Line Adapter type, including those intended for limited-distance use only, and for those designed to operate over unlimited-distance common-carrier lines. A Glossary is included as an appendix.

Prior knowledge of data communications systems is helpful, but not essential.

For a description of the switched network, automatic answering, and automatic call origination features of the IBM 1200 Bit-per-Second Line Adapter, this manual refers to SYSTEMS manual, IBM 3872 Modem User's Guide, GA27-3058. General Information, 74 pages

GA27-3004

GENERAL INFORMATION - BINARY SYNCHRONOUS COMMUNICATIONS

This publication describes the Binary Synchronous Communications (BSC) procedures in general terms. The major topics covered are: BSC concepts, (including transmission codes and data-link operation), message formats, additional data-link capabilities, and planning considerations.

Systems Reference Library Manual, 36 pages

GA27-3005

IBM 2780 DATA TRANSMISSION TERMINAL - COMPONENT DESCRIPTION

This Component Description manual describes the principles of operation of the IBM 2780 Data Transmission Terminal. The data-link control characters, code structures, timeouts, and throughput rates associated with the Binary Synchronous method of transmission are described.

The communications facilities, data sets, and special features available for this Tele-processing terminal are also discussed.
Systems Reference Library Manual, 70 pages

GA27-3006

IBM REMOTE MULTIPLEXERS AND COMMUNICATIONS TERMINALS

INSTALLATION MANUAL - PHYSICAL PLANNING
This publication contains physical planning information for IBM Remote Multiplexers and Communications Terminals. Included are physical specifications, electrical and environmental requirements, cabling requirements, and available communications facilities.
Systems Reference Library Manual, 64 pages

GA27-3013

SYSTEM COMPONENTS: IBM 2770 DATA COMMUNICATION SYSTEM

This System Components manual describes the principles of operation of the component units of the IBM 2770 Data Communication System. The data link control characters, code structures, and timeouts associated with the Binary Synchronous method of transmission used by the 2770 are described. Also described are the operating characteristics of the various input/output devices and the specifications of the input/output media. Special features and specify features for all system units are included.

This manual comprises descriptions of individual units within the 2770 Data Communication System.
Systems Reference Library Manual

GA27-3014

IBM 2770 SYSTEM SUMMARY

The IBM 2770 Data Communication System is a modular, general-purpose terminal system that communicates either batched data or inquiry-response information, or a combination of both, with another 2770, other binary-synchronous communications terminals, and System/360 or System/370.

As an introduction to the system, this manual points out the design highlights including optional media configurations, basic features and special features, applications, and throughput capabilities. The manual also acquaints the reader with: (1) the organization of the system - the control unit and its relationship with input and output devices, and (2) programmed, manual, and automatic (built-in) operation of the system.
Systems Reference Library Manual

GA27-3015

IBM 2790 DATA COMMUNICATION SYSTEM COMPONENT DESCRIPTION

The IBM 2790 Data Communication System is a two-way, in-plant communication and production reporting system. This publication describes the units of the 2790 system, along with its capabilities, features, and applications. This publication presumes a telecommunications background and IBM System/360 experience. The purpose of this publication is to assist programmers and systems analysts in designing and operating the 2790 system.

This publication describes the 2790 system using the 2715 Transmission Control Unit as the system controller.

IBM 2793 Area Station
IBM 2795 Data Entry Unit
IBM 2796 Data Entry Unit
IBM 2797 Data Entry Unit
IBM 2798 Guidance Display Unit
IBM 1035 Badge Reader
IBM 1053 Printer

Systems Reference Library Manual, 78 pages

GA27-3016

IBM 2790 SYSTEM SUMMARY

The IBM 2790 Data Communication System is a two-way, in-plant data communication and production reporting system. This 2790 System Summary is written for those who want an introduction to the IBM 2790 system, its associated components, and its applications. A general description of each of the system components is given, with a summary of all pertinent features of each.
System Reference Library Manual, 36 pages

GA27-3017

IBM 2790 DATA COMMUNICATION SYSTEM INSTALLATION MANUAL

PHYSICAL PLANNING
This manual provides technical information necessary for planning the physical installation of the IBM 2790 Data Communications System. Included are physical specifications and electrical requirements for each unit of the system. Typical system configurations with interunit cabling requirements are presented.

The intended customer audience includes facilities planners such as architects and consultants, contractors, operating management of the system, building superintendents, and communications technical representatives.

The intended IBM audience includes Sales Representatives, Systems Engineers, Installation Planning Representatives, and Customer Engineers.
System Reference Library Manual, 66 pages

GA27-3018

IBM 2770 CONFIGURATORS (MANUAL)

This manual illustrates typical configurations of the IBM 2770 Data Communication System; each input or output device that can be attached to the system is illustrated in at least one of the typical configurations. "Maximum Configuration" charts list all valid maximum configurations of input/output devices that can be attached to the 2770 system.

Specify and Special features common to both domestic and World Trade Corporation (WTC) systems and those unique to WTC systems are listed for the IBM 2772 Multi-Purpose Control Unit and Keyboard and for each input or output device that can be attached to the system.
Manual, 88 pages

GA27

LB21

GA27-3019

**IBM 2770 DATA COMMUNICATION SYSTEM
INSTALLATION MANUAL--PHYSICAL PLANNING**
This publication presents detailed information concerning the physical characteristics of the IBM 2770 Data Communication System. Dimensions, weights, service clearances, physical information for each unit, and environmental and electrical requirements are included. Particular attention is devoted to information necessary for the customer to prepare his premises for actual installation of equipment. Planning assistance is available from IBM sales and installation planning representatives.
Systems Reference Library Manual, 42 pages

GA27-3021

IBM 2790 CONFIGURATOR
The IBM 2790 Configurator is written for IBM Salesmen, IBM Systems Engineers, and customer system evaluation management. This manual illustrates configurations for IBM 2790 Data Communications Systems attached to System/7, System/360, System/370, or to an IBM 1800 Data Acquisition and Control System. Diagrams show the relationship of all units in the system. Domestic and World Trade systems are shown in table and chart form to provide standard, special, and specify feature information.
System Reference Library Manual, 22 pages

GA27-3035

IBM 2790 DATA COMMUNICATION SYSTEM OPERATOR'S GUIDE
The IBM 2790 Data Communication System is a two-way, in-plant communication and production reporting system. This publication is designed as a guide for operating the units of the 2790 system. Operational information about the following units and features is included:
IBM 2715 Transmission Control Unit
IBM 2791 Area Stations
IBM 2792 Remote Communications Controllers
IBM 2793 Area Station
IBM 2795 Data Entry Unit
Systems Reference Library Manual, 80 pages

GA27-3038

OPERATOR'S GUIDE: IBM 2770 DATA COMMUNICATION SYSTEM
This Operator's Guide is designed specifically for personnel operating or implementing the IBM 2770 Data Communication System. Step-by-step operating procedures and flowchart-type error recovery procedures are included for the control unit and for each of the input/output devices.
The procedures for initiating, answering and terminating a switched-network communications link with another terminal or processor are discussed. Error message formatting and transmission procedures are also described in detail.
Operator's Guide, 150 pages

GA27-3058

IBM 3872 MODEM USER'S GUIDE
The IBM 3872 Modem can transfer data at rates of 2400 or 1200 bits per second. It operates on dedicated (leased or privately owned), voice-grade communications facilities. In the USA and Canada, the 3872 also operates on the public switched network.
In this publication, the 3872 is described as an item of equipment in the medium-speed modem field. The manual is in four main parts: Part 1 describes (in general terms) the IBM 3872 Modem, planning considerations, and equipment and facility considerations; Part 2 presents 3872 operating procedures and offline problem determination procedures; Part 3 describes (in detail) the IBM 3872 Modem; interface specifications, installation specifications, channel specifications, and special features. Considerations in using the 3872 in World Trade countries are included in appropriate places in the manual and are summarized in Part 4, which also contains the glossary.
This publication is intended for system planners, systems engineers, installation planners, operators, and supervisory personnel. A knowledge of teleprocessing systems is a prerequisite for Part 3 only. Operator information (Part 3) is separated from general and specific descriptive information, for easier accessibility.
System Library User's Guide, 70 pages

GA27-3062

IBM 3872 MODEM PROBLEM DETERMINATION CARD
This foldout card document normally accompanies a 3872 Modem to help the customer determine who to call when a communications channel using the 3872 becomes troublesome.
8-1/2 x 11 inches, 8 cards

GA32-0006

**TAPE SPECIFICATIONS FOR IBM ONE-HALF INCH TAPE DRIVES AT:
556 AND 800 BPI AND 3200 CPI**
This manual provides the specifications and requirements for magnetic tape to be used on IBM Tape Drives. The specifications are presented in two parts: General information and Tape Properties Essential for IBM Tape Drive Use. The latter section covers minimum properties required for tape use on all IBM Tape Drives.
Manual, 11 pages

GA33-0002

IBM 3874 MODEM USER'S GUIDE
This publication is primarily intended for system planners, operators, systems engineers, installation planners and supervisory personnel. It is also required for its operating procedures by IBM customer engineers who must maintain the IBM 3874 Modem.
The publication describes the 3874 Modem, which can operate on non-switched and switched lines at a speed of 4800 or 2400 BPS and is in four main parts:
• Part 1 describes (in general terms) the 3874, with planning and equipment considerations
• Part 2 shows the operator controls and gives the operating and operator maintenance procedures
• Part 3 describes (in detail) the 3874 giving functional description, interface specifications, strapping options, physical installation specifications, and communication channel specifications.
• Part 4 summarizes counting differences, gives abstracts from the communication channel specifications, and describes switched network back-up operation with BTAM.
The information for Part 3 for systems engineers presupposes a knowledge of teleprocessing, but the information for installation planning engineers and operators requires no such understanding.
Manual, 84 pages

GA36-0001

IBM 4872 MODEM MODEL 1
This publication introduces the IBM 4872 Modem Model 1 and describes its role in a point-to-point network. Details concerning installation planning, operation, and special features are also included.
Systems Reference Library Manual, 22 pages

GA36-0004

IBM 4872 MODEM MODELS 2 AND 3
This publication introduces the IBM 4872 Modem Models 2 and 3 and describes their role in a multipoint network. Details concerning installation planning, operation, and special features are also included.
Systems Reference Library Manual, 18 pages

GB21-1083

**COLOR MATCHING (DYE SELECTION AND FORMULATION)
FDP 5798-AXL (FOR S/7), 5798-AXK (FOR S/3 MOD 10)
5798-AXN (FOR S/370) & 5798-AXP (FOR 1130 & 1800) NOTICE**
This 4 page document describes the purpose and highlights of the Color Matching (Dye Selection and Formulation) FDPs. These programs handle dye selection and formulation to match colored samples on textile materials in the laboratory. The program can examine all 3 or 4 dye combinations of dyes from a list of candidates to match a given shade and list the resulting formulas in cost and/or best match sequence. The latest color theory and experience will be employed where applicable. Several new correction and production add routines are included, along with a program to assist in multiple fiber blends.
The resultant FDP will offer operational and functional enhancements over the Type III Color Match Program.
This Availability Notice contains complete ordering information for the Field Developed Program and all its related documentation, for management and data processing personnel who are perspective users of the program and others who require information concerning it.
Availability Notice, 4 pages

SB21-1084

**COLOR MATCHING (DYE SELECTION AND FORMULATION)
FDP'S 5798-AXL, L, M, & P DESCRIPTION/OPERATIONS**
This 153 page document describes the capabilities of the FDPs and the programs of the Color Matching (Dye Selection and Formulation) FDPs. These programs handle dye selection and formulation to match colored samples on textile materials in the laboratory. The program can examine all 3 or 4 dye combinations of dyes from a list of candidates in cost and/or best match sequence. The latest color theory and experience will be employed where applicable. Several new correction and production add routines are included, along with a program to assist in multiple fiber blends.
The resultant FDP will offer operational and functional enhancements over the Type III Color Match Program.
Manual, 153 pages

LB21-1085

**COLOR MATCHING (DYE SELECTION AND FORMULATION)
FDP 5798-AXL, AXK, AXN, AXP - SYSTEMS GUIDE**
This 71 page document describes the steps necessary to modify the Color Matching (Dye Selection and Formulation) FDPs. These programs handle dye selection and formulation to match colored samples on textile materials in the laboratory. The program can examine all 3 or 4 dye combinations of dyes from a list of candidates to match a given shade and list the resulting formulas in cost and/or best match sequence. The latest color theory and experience will be employed where applicable. Several new correction and production add routines are included, along with a program to assist in multiple fiber blends.
The resultant FDP will offer operational and functional enhancements over the Type III Color Match Program.

LB21

GX27

This systems guide provides the Systems Analyst with the necessary information on the design, logic and coding of the system to enable him to make modifications, diagnose program errors and perform program maintenance.
Systems Guide, 71 pages

GB30-0521

KNIC INDEX TO GSD FIELD DEVELOPED PROGRAMS INSTALLED USER PROGRAMS

This brochure provides a ready reference to all General Systems Division FDP's/VP's released through June 30, 1974.
8-1/2 x 11 inch brochure, 36 pages

GC20-1668

DATA COMMUNICATIONS PRIMER: STUDENT TEXT
This manual is intended for the user of data processing equipment who has a need for data communications services. It introduces the reader to the world of data communications and enables him to approach the common carriers for competent, detailed, up-to-date information on facilities, specifications and tariffs to satisfy his needs.
Student Text

GC20-1769

FINANCE AND SECURITIES INDUSTRIES BIBLIOGRAPHY
The purpose of this bibliography is to list and categorize IBM application publications and programs that are pertinent to finance and securities industries.

- o Section I classifies these publications and programs by industry and application.
- o Section II contains abstracts of application briefs and application manuals, in order number sequence.
- o Section III contains abstracts of application programs, field developed programs, installed user programs, and program products, in program number sequence.

Manual, 44 pages

GC20-1773

PUBLIC UTILITIES - POWER: BIBLIOGRAPHY
The purpose of this bibliography is to list and categorize IBM application publications and application-related program publications that are pertinent to public utility--power and water industries.

- o Section I classifies the publications by industry and application.
- o Section II contains an abstract of each publication, in order number sequence.

Manual, 14 pages

GC20-1774

PUBLIC UTILITIES - COMMUNICATIONS: BIBLIOGRAPHY
The purpose of this bibliography is to list and categorize IBM application publications and application-related program publications that are pertinent to communications industries.

- o Section I classifies the publications by industry and application.
 - o Section II contains an abstract of each publication, in order number sequence.
- Application Bibliography, 9 pages

GH20-0718

PROSPRO II (TSX/1800) PROCESS SYSTEMS PROGRAM: APPLICATION DESCRIPTION MANUAL, PROG. NO. 5718-F81
PROSPRO II (PROCESS SYSTEMS PROGRAM) is a simple standardized system utilizing the IBM 1800 Data Acquisition and Control System for industrial control applications which are mostly continuous operations. The user specifies the parameters of control strategy and/or data acquisition by filling in blanks on eleven special forms from which cards are punched and entered online into data files and tables of pointers which cause the system to perform the defined actions.

The PROSPRO II system implements supervisory control and, as an optional feature, the forms-oriented structure and high-level language capabilities are extended to direct digital control (DDC).

Comprehensive man-machine-process interactive communication is built around the IBM 1892 Model 11 Process Operator's Console. The entire PROSPRO II system is designed and coded utilizing efficient file structures, file buffering, and program execution procedures.

This manual provides general information about the system, its design philosophy, its four processors, and configuration and capacity considerations. The various programming forms are described in terms of system applications. A comprehensive glossary defines special terms germane to process control in general and to PROSPRO control in particular.
Manual, 76 pages

GH20-4093

1800 REPORT PROGRAM GENERATOR (RPG) PROG. NO. 5718-RC1 FUNCTIONAL DESCRIPTION
The Program Product Specifications (PPS) describe the warranted specifications of the subject Program Product.
Flyer, 2 pages

GH20-4420

PROSPRO II (TSX/1800) PROCESS SYSTEMS PROGRAM: PROG. PROD. 5718-F81 FUNCTIONAL DESCRIPTION
This Program Product Functional Description (PPFD) describes the functional capabilities of the subject Program Product, which has a Programming Service Classification of C.
Flyer

GH20-4423

1800/2260 DATA ENTRY SYSTEM (PROGRAMMING RPO MA0718): PRG FUNCTIONAL DESCRIPTION, PROG. NO. 5799-AAK
This Program Product Functional Description (PPFD) describes the functional capabilities of the subject Program Product, which has a Programming Service Classification of C.
Functional description sheet, 2 pages

GH20-4430

IBM 1130 AND 1800 SUBROUTINE LIBRARY - MATHEMATICS (SL-MATH) PROC. NO. 5711-XM2
This Program Product Functional Description (PPFD) describes the functional capabilities of the subject Program Product, which has a Programming Service Classification of C.
Functional Description Sheet, 2 pages

GJD1-3010

MICROFICHE - SOURCE LISTING
IBM 1800 PROGRAMS CARD/PAPER TAPE
PROGRAM NUMBERS 1800-AS-005 1800-AS-006 1800-FO-007
1800-FO-008 1800-LM-003 1800-LM-004 1800-UT-001 1800-UT-002
This microfiche contains source listings of program(s) referenced in title.
Microfiche

GJD1-3030

IBM TSX TIME SHARING EXECUTIVE SYSTEM (1800-OS-001) AND NON-REENTRANT SUBROUTINE (1800-LM-009) SOURCE LISTING FICHE
This microfiche contains source listings of program(s) referenced in title.
Microfiche

GR20-4419

INTRODUCTION TO SENSOR BASED SYSTEMS STUDENT TEXT
This text, in conjunction with the illustrations (GR20-4420) is a self-study package for individuals with no prior data processing experience. The student will be introduced to the basic concepts of a computer and then proceed through an introduction of the real time sensor based system. Topics include: Computer Concepts, Input/Output Devices, Programming, Program Languages, Real Time Sensor Based Systems and Instrumentation Application and Control.
Manual, 105 pages

GR20-4420

INTRODUCTION TO SENSOR BASED SYSTEMS ILLUSTRATIONS
These illustrations support the student text (GR20-4419) in the Introduction to Sensor Based Systems self-study course. It contains the visual material referenced in the student text. Answers to the self-study questions in the text are contained in this book.
Manual, 82 pages

GX20-1705

2311 MODEL 1 DISK STORAGE DRIVE CAPACITY AND TRANSMISSION TIME: REFERENCE SUMMARY
A capacity and transmission time reference card arranged in a tabular format. Formulas and examples of how to use the card are included.
Reference Card, 3 folds

GX20-8020

FLOWCHARTING TEMPLATE
This plastic template provides cut-out shapes for drawing standard symbols used frequently in flowcharting computer systems and programs. It is enclosed in an envelope outlining definitions of symbols and use of the template. More details are given in the Data Processing Techniques manual on FLOWCHARTING TECHNIQUES (GC20-8152).
Template, 10 to a set

GX20-8021

FLOWCHARTING WORKSHEET
This work sheet is used for rough layout of flowcharts prior to coding in the IBM AUTOCHART language.
Padded Form, 25 sheets, 16 1/2" x 11"

GX27-2900

IBM PHYSICAL PLANNING TEMPLATE: COMMUNICATIONS TERMINALS
This template gives a scaled representation of the physical planning specifications for the IBM Communications Terminals.
Template, 8 1/2 x 11, 1 page

GX27-2909

PHYSICAL PLANNING TEMPLATE IBM 2770 DATA COMMUNICATION SYSTEM
This equipment template on acetate sheet is for the 2770 Data Communication System. Its scale is 1/4" equals 1".
Template

Part 3. Current Editions by Order Number

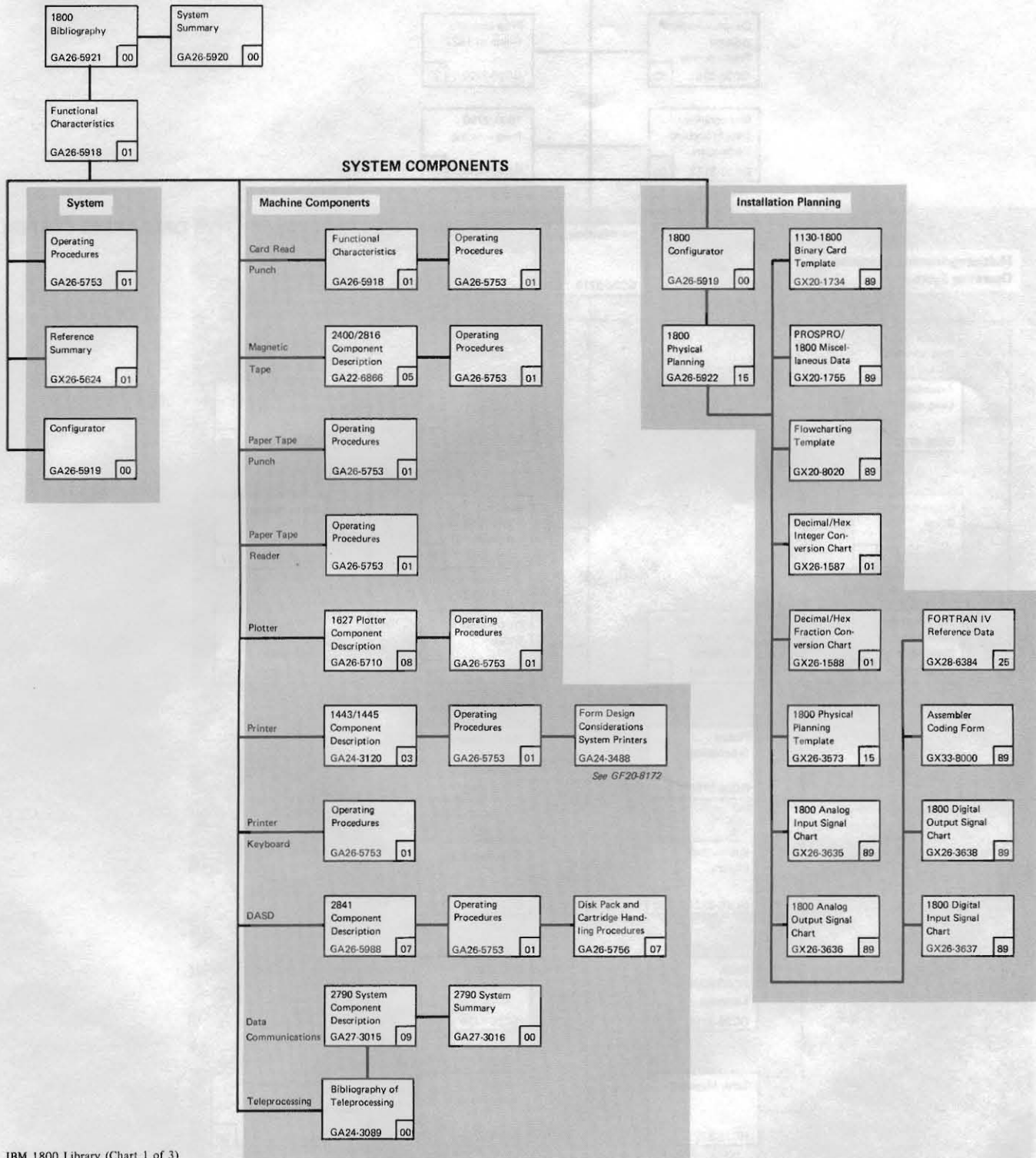
The flag ** before an order number indicates a new or changed item. The flag # following an order number means that more than one edition is current. Any Technical Newsletter applying to the latest edition also applies to all earlier editions but is listed only once. (See Preface.)

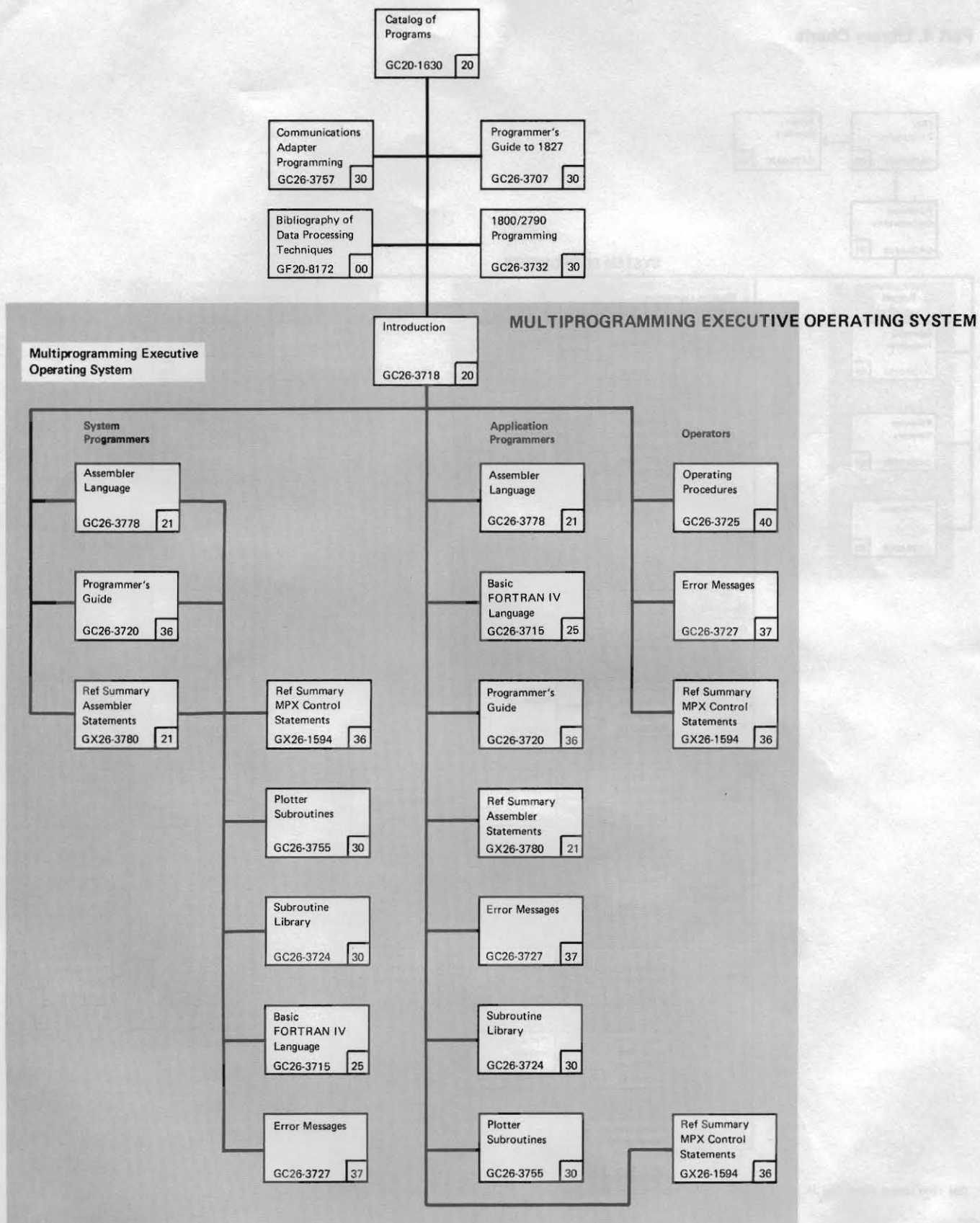
09	GA21-9028-2			IBM 357/1030/2790 BADGE SPECIFICATIONS
05	GA22-6866-6#			SYSTEM/360 COMPONENT DESCRIPTIONS: 2400-SERIES MAGNETIC
	GA22-6866-5#	GN32-0008		TAPE UNITS, 2803/2804 TAPE CONTROLS, AND 2816 SWITCHING UNIT
				MODEL 1
00	GA24-3090-5			IBM TELEPROCESSING SYSTEMS SUMMARY
00	GA24-3119-1			IBM 1442 CARD READ-PUNCH MODELS 1 AND 2; AND 1442 CARD
				READER MODELS 3 AND 4
03	GA24-3120-7			IBM 1443 PRINTER MODELS 1 THROUGH 4 AND N1, AND 1445 PRINTER
				MODELS 1 AND N1: COMPONENT DESCRIPTION
15	**GA24-3435-5	**GN27-3164		PLANNING AND INSTALLATION OF A DATA COMMUNICATION SYSTEM
				USING IBM LINE ADAPTERS
08	GA26-5710-0			IBM 1627 PLOTTER
01	GA26-5753-1			IBM 1800 OPERATING PROCEDURES
07	GA26-5756-10			IBM DISK PACK AND CARTRIDGE HANDLING PROCEDURES
01	**GA26-5918-9#			IBM 1800 FUNCTIONAL CHARACTERISTICS
	GA26-5918-8#			
00	GA26-5919-6			IBM 1800 DATA ACQUISITION AND CONTROL SYSTEM CONFIGURATOR
00	GA26-5920-4			IBM 1800 SYSTEM SUMMARY
15	GA26-5922-7#			IBM 1800 INSTALLATION MANUAL - PHYSICAL PLANNING
07	GA26-5988-7			IBM SYSTEM/360 COMPONENT DESCRIPTIONS--2841 AND
				ASSOCIATED DASD
09	GA27-3004-2#			GENERAL INFORMATION - BINARY SYNCHRONOUS COMMUNICATIONS
09	GA27-3005-3			IBM 2780 DATA TRANSMISSION TERMINAL - COMPONENT DESCRIPTION
15	**GA27-3006-4#	**GN27-3144	**GN27-3163	IBM REMOTE MULTIPLEXERS AND COMMUNICATIONS TERMINALS
	GA27-3006-3#	**GN27-3138		INSTALLATION MANUAL - PHYSICAL PLANNING
09	GA27-3013-2			SYSTEM COMPONENTS: IBM 2770 DATA COMMUNICATION SYSTEM
09	GA27-3014-3			IBM 2770 SYSTEM SUMMARY
09	GA27-3015-3#			IBM 2790 DATA COMMUNICATION SYSTEM COMPONENT DESCRIPTION
09	GA27-3016-2			IBM 2790 SYSTEM SUMMARY
15	**GA27-3017-6#			IBM 2790 DATA COMMUNICATION SYSTEM INSTALLATION MANUAL
				PHYSICAL PLANNING
00	GA27-3018-1			IBM 2770 CONFIGURATORS (MANUAL)
15	GA27-3019-3	GN27-3130		IBM 2770 DATA COMMUNICATION SYSTEM
				INSTALLATION MANUAL--PHYSICAL PLANNING
00	GA27-3021-2			IBM 2790 CONFIGURATOR
09	GA27-3035-3			IBM 2790 DATA COMMUNICATION SYSTEM OPERATOR'S GUIDE
09	GA27-3038-1			OPERATOR'S GUIDE: IBM 2770 DATA COMMUNICATION SYSTEM
09	**GA27-3058-3#			IBM 3872 MODEM USER'S GUIDE
09	**GA27-3062-2			IBM 3872 MODEM PROBLEM DETERMINATION CARD
05	**GA32-0006-3			TAPE SPECIFICATIONS FOR IBM ONE-HALF INCH TAPE DRIVES AT:
				556 AND 800 BPI AND 3200 FCI
09	**GA33-0002-2#			IBM 3874 MODEM USER'S GUIDE
09	GA36-0001-1			IBM 4872 MODEM MODEL 1
09	GA36-0004-0			IBM 4872 MODEM MODELS 2 AND 3
74	LB21-0042-0			A SYSTEM FOR COMPUTERIZING MEDICAL EXAMINATIONS SYSTEMS
				GUIDE, FDP PROG. NO. 5798-AAP, FEATURE NO. 8014
74	GB21-0130-0			1800/2790 HOSPITAL DATA COLLECTION AND COMMUNICATION
				SYSTEM; FDP AVAILABILITY NOTICE, PROG. NO. 5798-ACA
74	SB21-0131-0			1800/2790 HOSPITAL DATA COLLECTION AND COMMUNICATION SYSTEM
				FDP 5798-ACA DESCRIPTION/OPERATIONS
74	LB21-0132-0			1800/2790 HOSPITAL DATA COLLECTION AND COMMUNICATION SYSTEM
				SYSTEMS GUIDE, FDP PROG. NO. 5798-ACA
75	**GB21-1083-1#			COLOR MATCHING (DYE SELECTION AND FORMULATION)
	GB21-1083-0#			FDP 5798-AXL (FOR S/7), 5798-AXK (FOR S/3 MOD 10)
				5798-AXN (FOR S/370) & 5798-AXP (FOR 1130 & 1800) NOTICE
75	SB21-1084-0			COLOR MATCHING (DYE SELECTION AND FORMULATION)
				FDP'S 5798-AXR,L,N, & P DESCRIPTION/OPERATIONS
75	LB21-1085-0			COLOR MATCHING (DYE SELECTION AND FORMULATION)
				FDP 5798-AXL, AXK, AXN, AXP - SYSTEMS GUIDE
85	**GB30-0521-2#			KWIC INDEX TO GSD FIELD DEVELOPED PROGRAMS INSTALLED
	GB30-0521-1#			USER PROGRAMS
85	GC20-1618-5#			NUMBER SYSTEMS - STUDENT TEXT
20	GC20-1630-7	GN20-0031-26		CATALOG OF PROGRAMS FOR IBM 1130 COMPUTING SYSTEM AND IBM
				1800 DATA ACQUISITION AND CONTROL SYSTEM
85	GC20-1668-2			DATA COMMUNICATIONS PRIMER: STUDENT TEXT
85	GC20-1684-3#			INTRODUCTION TO IBM DATA PROCESSING SYSTEMS: STUDENT TEXT
85	GC20-1699-4			DATA PROCESSING GLOSSARY
60	GC20-1740-3			STATE AND LOCAL GOVERNMENT INDUSTRIES BIBLIOGRAPHY
60	**GC20-1747-1			EDUCATION INDUSTRY BIBLIOGRAPHY
60	GC20-1769-1			FINANCE AND SECURITIES INDUSTRIES BIBLIOGRAPHY
60	**GC20-1773-0			PUBLIC UTILITIES - POWER: BIBLIOGRAPHY
60	**GC20-1774-0			PUBLIC UTILITIES - COMMUNICATIONS: BIBLIOGRAPHY
36	GC26-3703-1	GN34-0036	**GN34-0294	IBM 1800 TIME-SHARING EXECUTIVE SYSTEM CONCEPTS AND
				TECHNIQUES, PROG. NO. 1800-OS-001
30	GC26-3707-1			IBM 1800 - SYSTEM/360 ADAPTER AND 1827 DATA CONTROL UNIT
				PROGRAMMER'S GUIDE
25	**GC26-3715-9#			IBM 1130/1800 BASIC FORTRAN IV LANGUAGE
	GC26-3715-8#			
20	GC26-3718-5#			IBM 1800 MULTIPROGRAMMING EXECUTIVE OPERATING SYSTEM
				INTRODUCTION, PROG. NO. 1800-OS-010
36	GC26-3720-5	GN34-0186	**GN34-0295	IBM 1800 MULTIPROGRAMMING EXECUTIVE OPERATING SYSTEM
				PROGRAMMER'S GUIDE - PROGRAM NUMBER 1800-OS-010
30	GC26-3723-1	GN34-0038		IBM 1800 TIME-SHARING EXECUTIVE SYSTEM SUBROUTINE LIBRARY
				PROGRAM NUMBERS: 1800-OS-001, 1800-LM-009
30	GC26-3724-2	GN26-0605	GN34-0049	IBM 1800 MULTIPROGRAMMING EXECUTIVE OPERATING SYSTEM
		GN34-0187	**GN34-0296	SUBROUTINE LIBRARY - PROG. NO. 1800-OS-010

40	**GC26-3725-4#			IBM 1800 MULTIPROGRAMMING EXECUTIVE OPERATING SYSTEM OPERATING PROCEDURES, PROG. NO. 1800-OS-010
	GC26-3725-3#			IBM 1800 MULTIPROGRAMMING EXECUTIVE OPERATING SYSTEM ERROR MESSAGES AND RECOVERY PROCEDURES, PROG NO. 1800-OS-010
37	**GC26-3727-4#	**GN34-0284		1800 MULTIPROGRAMMING EXECUTIVE OPERATING SYSTEM 1800/2790 DATA COMMUNICATION SYSTEM PROGRAMMING
	GC26-3727-3#			IBM 1800 CARD/PAPER TAPE PROGRAMMING SYSTEM, OPERATOR'S GUIDE
30	GC26-3732-1	GN34-0191		IBM 1800 TIME-SHARING EXECUTIVE SYSTEM OPERATING PROCEDURES, PROGRAM NUMBER 1800-OS-001, VERSION 3
40	GC26-3751-2#			IBM 1130/1800 PLOTTER SUBROUTINES
40	GC26-3754-4	GN34-0037	GN34-0192	IBM 1800 MULTIPROGRAMMING EXECUTIVE OPERATING SYSTEM COMMUNICATIONS ADAPTER PROGRAMMING
30	GC26-3755-2			IBM 1130/1800 ASSEMBLER LANGUAGE (1130 DMS AND 1800 MPX) 1800 SUBROUTINE LIBRARY (C/PT) PROG. NOS. 1800-LM-003, 004
30	GC26-3757-0	GN34-0053	GN34-0194	IBM 1800 ASSEMBLER LANGUAGE (FOR C/PT & TSX), PROG NOS. 1800-AS-005, 006
21	GC26-3778-2			INSTALLATION MANAGEMENT BIBLIOGRAPHY
30	GC26-5880-5#			IBM SYSTEM/360 AND SYSTEM/370, IBM 1130 AND 1800 SUBROUTINE LIBRARY-MATHEMATICS (SL-MATH) GENERAL INFORMATION MANUAL
21	GC26-5882-5#			PROG. NOS. 5736-XM7, 5711-XM2
00	**GF20-8172-10			PROSPRO III (MPX/1800) PROCESS SYSTEMS PROGRAM, APPLICATION DESCRIPTION MANUAL - PRPQ P73015 PROG. NO. 5799-ABP
82	GH12-5103-0	GN12-5025		PROSPRO III (MPX/1800) PROCESS SYSTEMS PROGRAM, LANGUAGE SPECIFICATIONS MANUAL - PRPQ P73015, PROG. NO. 5799-ABP
75	GH19-0060-0	**GN19-6251		PROSPRO III (MPX/1800) PROCESS SYSTEMS PROGRAM, OPERATOR CONSOLE OPERATIONS MANUAL - PRPQ P73015, PROG. NO. 5799-ABP
75	SH19-0061-0	**SN19-6252		PROSPRO III (MPX/1800) PROCESS SYSTEMS PROGRAM PROGRAM DESCRIPTION MANUAL - PRPQ P73015, PROG. NO. 5799-ABP
75	SH19-0062-0	**SN19-6253		1800/1130 CONTROL OPTIMIZATION PROGRAM (COP/1800-1130) (1800-CC-01X) APPLICATION DESCRIPTION
75	SH19-0063-0			1800 VEHICULAR TRAFFIC CONTROL SYSTEM (1800-UG-06X) VERSION 2 APPLICATION DESCRIPTION
82	GH20-0208-3			1800 PROCESS SUPERVISORY PROGRAM (PROSPRO/1800) APPLICATION DESCRIPTION, PROG. NO. 1800-CC-02X
70	GH20-0212-2			1800 VEHICULAR TRAFFIC CONTROL SYSTEM - VERSION 2 PROGRAM DESCRIPTION MANUAL, PROG. NO. 1800-UG-06X
75	GH20-0261-0			1800 VEHICULAR TRAFFIC CONTROL SYSTEM (1800-UG-06X) VERSION 2 OPERATIONS MANUAL
70	GH20-0335-2			1800/1130 CONTROL OPTIMIZATION PROGRAM (COP/1800-1130) VERSION 2 (1800-CC-01X) PROGRAM DESCRIPTION AND OPERATIONS
70	GH20-0336-2			1800 PROCESS SUPERVISORY PROGRAM (PROSPRO/1800) PROCESS OPERATOR'S MANUAL, PROG. NO. 1800-CC-02X
82	GH20-0351-1	GN20-2543		1800 PROCESS SUPERVISORY PROGRAM (PROSPRO/1800) (1800-CC-02X) LANGUAGE SPECIFICATIONS MANUAL
75	GH20-0472-2#			1800 PROCESS SUPERVISORY PROGRAM (PROSPRO/1800) (1800-CC-02X) USER'S MANUAL
75	GH20-0473-2#			MEDIA INDUSTRIES BIBLIOGRAPHY
75	GH20-0474-1	GN20-2151		INSURANCE INDUSTRY BIBLIOGRAPHY
60	GH20-0531-4			IBM CLINICAL LABORATORY DATA ACQUISITION SYSTEM (CLDAS) APPLICATION DESCRIPTION MANUAL, PROG. NO. 5718-H11
60	GH20-0536-6			PROSPRO II (TSX/1800) PROCESS SYSTEMS PROGRAM: APPLICATION DESCRIPTION MANUAL, PROG. NO. 5718-P81
74	GH20-0715-0			1800 CHROMATOGRAPH MONITORING PROGRAM
75	GH20-0718-0	GN20-3133		APPLICATION DESCRIPTION MANUAL, PROG. NO. 5718-XX1
79	GH20-0724-1	GN20-2319		IBM CLINICAL LABORATORY DATA ACQUISITION SYSTEM (CLDAS) PROGRAM REFERENCE MANUAL PROGRAM NUMBER 5718-H11
74	SH20-0731-0			PROSPRO II (TSX/1800) PROCESS SYSTEMS PROGRAM
75	SH20-0732-0	SN20-3139		LANGUAGE SPECIFICATIONS MANUAL, PROG. NO. 5718-P81
75	SH20-0733-0	SN20-3138		PROSPRO II (TSX/1800) PROCESS SYSTEMS PROGRAM: PROCESS OPERATOR'S CONSOLE OPERATIONS MANUAL, PROG. NO. 5718-P81
75	SH20-0734-1	SN20-3268		PROSPRO II (TSX/1800) PROCESS SYSTEMS PROGRAM: PROGRAM DESCRIPTION MANUAL, PROG. NO. 5718-P81
28	GH20-0760-0	GN20-2334	GN20-2552	INTRODUCTION TO THE 1800 REPORT PROGRAM GENERATOR
74	GH20-0772-0	GN20-2330		PROG. NO. 5718-RG1
28	SH20-0778-0	SN20-2335	SN20-2581	CLINICAL LABORATORY MANAGEMENT SYSTEM (CLMS) APPLICATION DESCRIPTION MANUAL PROGRAM NUMBER 5718-H12
28	SH20-0779-0	SN20-2336	SN20-2551	1800 REPORT PROGRAM GENERATOR (RPG)
74	SH20-0823-0			LANGUAGE SPECIFICATIONS MANUAL, PROG. NO. 5718-RG1
74	SH20-0831-0			1800 REPORT PROGRAM GENERATOR (RPG) OPERATIONS MANUAL
79	SH20-0861-0	SN20-2320	SN20-2376	PROGRAM NUMBER 5718-RG1
79	SH20-0862-0	SN20-2321	SN20-2375	IBM CLINICAL LABORATORY MANAGEMENT SYSTEM (CLMS) 5718-H12 PROGRAM DESCRIPTION MANUAL
36	GH20-0881-2	**GN34-0214		CLINICAL LABORATORY MANAGEMENT SYSTEM (CLMS) 5718-H12 OPERATIONS MANUAL
30	GH20-0884-1	GN20-2819		1800 CHROMATOGRAPH MONITORING PROGRAM, OPERATIONS MANUAL
60	GH20-0970-1	GN20-2459		PROGRAM NUMBER 5718-XX1
30	SH20-0974-0	SN20-2469	SN20-3121	1800 CHROMATOGRAPH MONITORING PROGRAM, PROGRAM DESCRIPTION, PROGRAM NUMBER 5718-XX1
30	GH20-0977-0	GN20-2818		1800 DISTRIBUTED SYSTEM PROGRAM, GENERAL INFORMATION MANUAL, PROGRAM NUMBER 1800-SV-003
30	GH20-0984-0	GN20-2820		MPX SPOOLING, GENERAL INFORMATION MANUAL, PROGRAM NUMBER 1800-SV-002
36	GH20-1142-1#	**GN34-0215		MEDICAL INDUSTRIES BIBLIOGRAPHY
36	GH20-1143-1	**GN34-0216		1800/2260 DATA ENTRY SYSTEM (PROGRAMMING RPQ MA0718): PROGRAM DESCRIPTION AND OPERATIONS MANUAL, PROG. NO. 5799-AAK
				MPX SPOOLING, PROGRAM DESCRIPTION MANUAL, PROGRAM NUMBER 1800-SV-002
				MPX SPOOLING OPERATIONS MANUAL, PROGRAM NUMBER 1800-SV-002
				1800 DISTRIBUTED SYSTEM PROGRAM, OPERATIONS GUIDE
				PROGRAM NUMBER 1800-SV-003
				IBM 1800 DISTRIBUTED SYSTEM PROGRAM - PROGRAM REFERENCE MANUAL - PROGRAM NUMBER 1800-SV-003

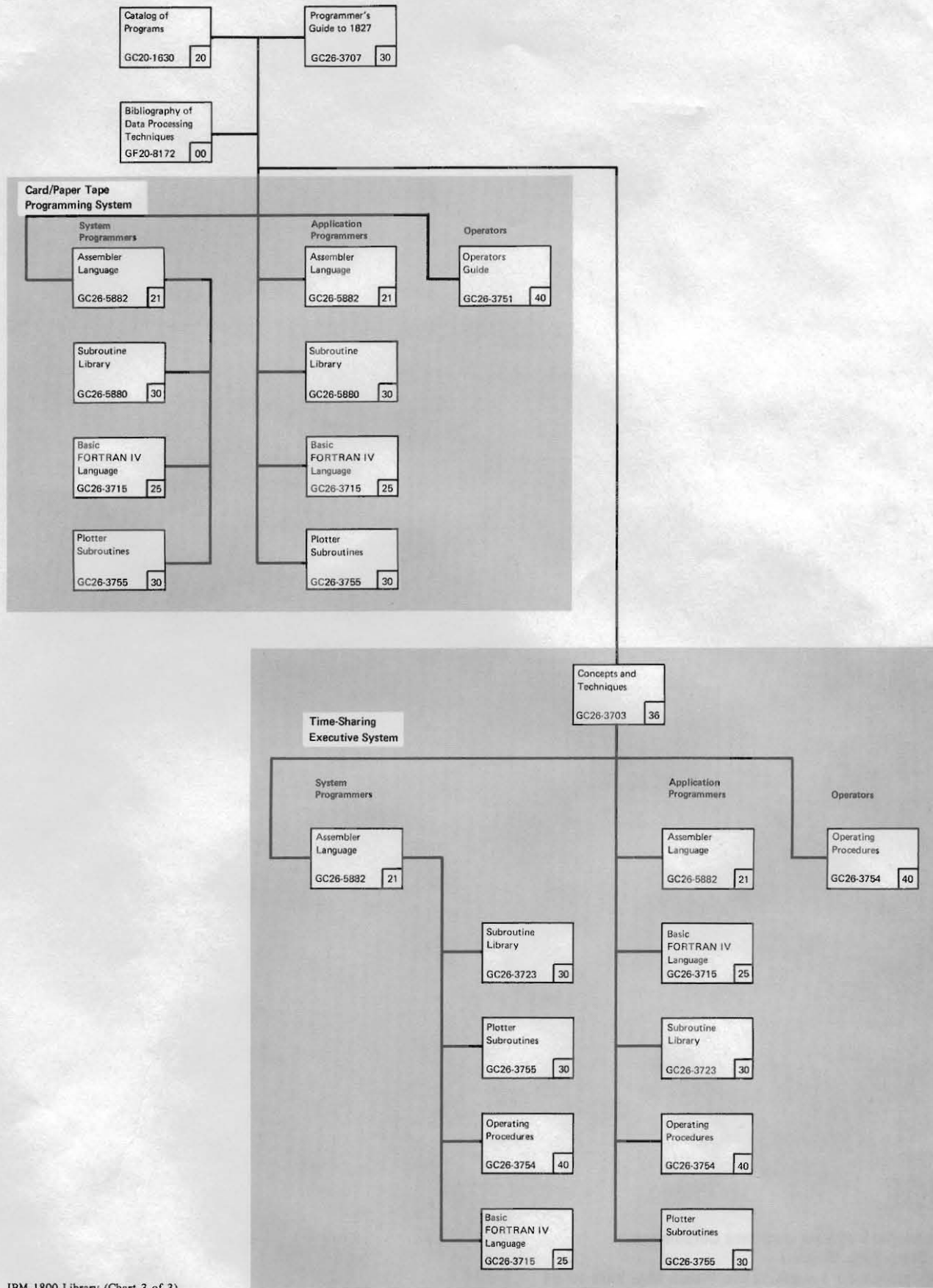
79	GH20-4086-0			IBM 1800 CHROMATOGRAPH MONITORING PROGRAM FUNCTIONAL DESCRIPTION, PROG. PRODUCT 5718-XX1
28	GH20-4093-0			1800 REPORT PROGRAM GENERATOR (RPG) PROG. NO. 5718-RG1 FUNCTIONAL DESCRIPTION
74	GH20-4402-0			CLINICAL LABORATORY MANAGEMENT SYSTEMS (CLMS) FUNCTIONAL DESCRIPTION - PROGRAM PRODUCT 5718-H12
75	GH20-4420-0			PROSPRO II (TSX/1800) PROCESS SYSTEMS PROGRAM: PROG. PROD. 5718-P81 FUNCTIONAL DESCRIPTION
30	GH20-4423-0			1800/2260 DATA ENTRY SYSTEM (PROGRAMMING RPQ MA0718): PRPQ FUNCTIONAL DESCRIPTION, PROG. NO. 5799-AAK
82	**GH20-4430-0			IBM 1130 AND 1800 SUBROUTINE LIBRARY - MATHEMATICS (SL-MATH) PROG. PROD. 5711-XM2 FUNCTIONAL DESCRIPTION
99	**GJD1-3010-0			MICROFICHE - SOURCE LISTING
				IBM 1800 PROGRAMS CARD/PAPER TAPE
				PROGRAM NUMBERS 1800-AS-005 1800-AS-006 1800-FO-007 1800-FO-008 1800-LM-003 1800-LM-004 1800-UT-001 1800-UT-002
99	**GJD1-3030-0			IBM TSX TIME SHARING EXECUTIVE SYSTEM (1800-OS-001) AND NON-REENTRANT SUBROUTINE (1800-LM-009) SOURCE LISTING FICHE MICROFICHE - SOURCE LISTING
99	**GJD1-3070-3			IBM 1800 MPX MULTIPROGRAMMING EXECUTIVE SYSTEM 1800-OS-010 VIDEO DISPLAY WITH IBM 1800
14	GL26-2114-0			INTRODUCTION TO SENSOR BASED SYSTEMS STUDENT TEXT
85	GR20-4419-0	**GN23-0917		INTRODUCTION TO SENSOR BASED SYSTEMS ILLUSTRATIONS
85	GR20-4420-0			2311 MODEL 1 DISK STORAGE DRIVE CAPACITY AND TRANSMISSION TIME: REFERENCE SUMMARY
07	**GX20-1705-2			1130 - 1800 BINARY CARD TEMPLATE
89	GX20-1734-0			IBM PROSPRO/1800 MISCELLANEOUS DATA FORM
89	GX20-1755-0			PROGRAM NUMBERS 5718-P81, 1800-CC-02X
				FLOWCHARTING TEMPLATE
89	**GX20-8020-1			FLOWCHARTING WORKSHEET
89	**GX20-8021-2			DECIMAL/HEXADECIMAL INTEGER CONVERSION CHART
01	GX26-1587-0			DECIMAL/HEXADECIMAL FRACTION CONVERSION CHART
01	GX26-1588-0			IBM 1800 REFERENCE SUMMARY MPX CONTROL STATEMENTS
36	**GX26-1594-4			PROGRAM NUMBER 1800-OS-010
				IBM PHYSICAL PLANNING TEMPLATE, 1800 DATA ACQUISITION AND CONTROL SYSTEM
15	GX26-3573-3			1800 ANALOG INPUT SIGNAL CHART
89	GX26-3635-1			1800 ANALOG OUTPUT SIGNAL CHART
89	GX26-3636-0			1800 DIGITAL INPUT SIGNAL CHART
89	GX26-3637-0			1800 DIGITAL OUTPUT SIGNAL CHART
89	GX26-3638-0			IBM 1130/1800 ASSEMBLER-LANGUAGE STATEMENTS SUMMARY (1130 DMS & 1800 MPX)
21	**GX26-3780-1*			IBM 1800 REFERENCE SUMMARY: SYSTEM REFERENCE DATA
	GX26-3780-0#			IBM PHYSICAL PLANNING TEMPLATE: COMMUNICATIONS TERMINALS
01	GX26-5624-4			PHYSICAL PLANNING TEMPLATE IBM 2770 DATA COMMUNICATION SYSTEM
15	GX27-2900-1			IBM FORTRAN IV REFERENCE CARD
15	GX27-2909-0			FORTRAN CODING FORM
				1130/1800 ASSEMBLER CODING FORM
25	GX28-6384-0			1800 REPORT PROGRAM GENERATOR (RPG) SYSTEM MANUAL, VOLUME 2: LISTINGS. PROG. NO. 5718-RG1, FEATURE NO. 8006
89	GX28-7327-6			IBM 1800 DISTRIBUTED SYSTEM PROGRAM: LISTINGS MICROFICHE
89	GX33-8000-0			PROGRAM NUMBER 1800-SV-003
28	LYB0-0534-0			PROSPRO III (MPX/1800) PROCESS SYSTEMS PROGRAM, SYSTEM LOGIC MANUAL - PROGRAM NUMBER 5799-ABP
99	**GYB0-0799-2			1800 VEHICULAR TRAFFIC CONTROL SYSTEM: SYSTEM MANUAL, PROG. NO. 1800-UG-06X, VERSION 2
75	LY19-0014-0	**LN19-6255		1800/1130 CONTROL OPTIMIZATION PROGRAM (COP/1800-1130) VERSION 2 (1800-CC-01X) - SYSTEM MANUAL
70	GY20-0082-2			1800 PROCESS SUPERVISORY PROGRAM (PROSPRO/1800) SYSTEM MANUAL PROGRAM NUMBER 1800-CC-02X
82	GY20-0110-1			PROSPRO II (TSX/1800) PROCESS SYSTEMS PROGRAM SYSTEM MANUAL VOLUME II PROGRAM LISTINGS
75	GY20-0128-1	GY20-0249		PROGRAM NUMBER 5718-P81 FEATURE CODE 8000
75	LY20-0502-0			PROSPRO II (TSX/1800) PROCESS SYSTEMS PROGRAM SYSTEM MANUAL VOLUME I: PROGRAM LOGIC
75	LY20-0503-0			PROGRAM NUMBER 5718-P81 FEATURE CODE 8000
28	LY20-0533-0	LN20-2337		1800 REPORT PROGRAM GENERATOR (RPG) SYSTEM MANUAL VOLUME I
79	LY20-0594-0	LN20-2322		PROGRAM NUMBER 5718-RG1 FEATURE CODE 8003
74	LY20-0649-0			1800 CHROMATOGRAPH MONITORING PROGRAM, SYSTEM MANUAL
30	LY20-0660-1	LN20-2570		PROGRAM NUMBER 5718-XX1 FEATURE CODE 8002
30	GY20-0668-0	GN20-2463		CLINICAL LABORATORY MANAGEMENT SYSTEM (CLMS): SYSTEM MANUAL, PROG. NO. 5718-H12, FEATURE NO. 8005
74	LY20-0670-0			1800/2260 DATA ENTRY SYSTEM (PROGRAMMING RPQ MA0718): SYSTEM MANUAL, PROG. NO. 5799-AAK
36	GY20-0803-1	**GN34-0213		MPX SPOOLING SYSTEM MANUAL, PROGRAM NUMBER 1800-SV-002
36	GY26-3620-1	GY26-8009		CLINICAL LABORATORY MANAGEMENT SYSTEM (CLMS): MPX FEATURE 6000 CONVERSION MANUAL, PROG. NO. 5718-H12, FEATURE NO. 8007
36	GY26-3702-2	GN34-0039	GN34-0193	1800 DISTRIBUTED SYSTEM PROGRAM LOGIC MANUAL
		**GN34-0298		PROGRAM NUMBER 1800-SV-003
36	GY26-3726-2	GN34-0189	**GN34-0299	IBM 1130/1800 CARD/PAPER TAPE PROGRAMMING SYSTEMS, PROGRAM LOGIC MANUAL
00	GY33-6003-2			IBM 1800 TIME-SHARING EXECUTIVE SYSTEM
95	S2C0-0151-1	S2C0-5178-1	S2C0-5177-1	PROGRAM LOGIC MANUAL, PROG. NO. 1800-OS-001, VERSION 3
		S2C0-0150-49	S2C0-5175-1	IBM 1800 MULTIPROGRAMMING EXECUTIVE OPERATING SYSTEM, PROGRAM LOGIC MANUAL (PROGRAM NUMBER 1800-OS-010)
95	S2C0-0301-4	**S2C0-5512-1	**S2C0-5394-1	PL/I LANGUAGE SPECIFICATIONS
		**S2C0-5393	**S2C0-5510-1	1130/1800 EARLY WARNING MICROFICHE
85	G310-0012-8*			MICROFICHE EARLY WARNING - PROGRAM PRODUCTS, CSP AND SCP
87	**G320-1244-5			IBM WORLD TRADE MARKETING PUBLICATIONS KWIC INDEX
85	G320-1621-32+			CUSTOMER EDUCATION COURSE CATALOG
				IBM MARKETING PUBLICATIONS KWIC INDEX

Part 4. Library Charts





IBM 1800 Library (Chart 2 of 3)



Accumulative Index of Publications and Programs - IBM 1800

SECTION 1: Order numbers of publications included in the 1800 Systems Reference Library are listed below, with the edition suffix of all current editions shown. When more than one edition of a publication is current, the order number is followed by #. Any Technical Newsletter applying to a later edition also applies to all prior editions but is only listed once. If the changes released in Technical Newsletters are inserted in their proper place, each current edition will correspond to any of the others.

The order number consists of eight characters. The first character is the use key, which identifies the conditions under which the item is available. Categories are: G - Available to users without charge through their IBM representative; L - Licensed Material, Property of IBM and available only to licensees for the IBM Program Product; S - For sale through IBM branch offices. The last seven characters are the form number. An alphabetic character in the third position of the prefix (e.g., GYBS-#430) identifies documentation on microfiche.

Changes since the last edition of this Bibliography are indicated by double asterisk.

ORDER NUMBER	TECHNICAL NEWSLETTERS	TITLE
00 GENERAL INFORMATION		
GA26-5921-7	GN2#-18#-42	IBM 1800 BIBLIOGRAPHY
GA24-3889-7	**GN2#-18#-53	TELE-PROCESSING AND DATA COLLECTION BIBLIOGRAPHY
GA26-5928-4		IBM 1800 SYSTEM SUMMARY
GA26-5919-6		IBM 1800 DATA ACQUISITION AND CONTROL SYSTEM CONFIGURATION
GF28-8172-7	**GN2#-18#-32	BIBLIOGRAPHY OF DATA PROCESSING TECHNIQUES
01 MACHINE SYSTEM		
GA26-5753-1		IBM 1800 OPERATING PROCEDURES
GA26-5918-8	GN26-#263 **GN26-#282	GN26-#269 IBM 1800 FUNCTIONAL CHARACTERISTICS
03 INPUT/OUTPUT		
GA24-3119-1		IBM 1442 CARD READ - PUNCH MODELS 1 AND 2
**GA24-3128-7		IBM 1442 CARD READER MODELS 3 AND 4
GA24-3488-4	GN24-#472	IBM 1443 PRINTER MODELS 1 TO 4 AND N1
GA26-5718-8		IBM 1445 PRINTER MODELS 1 AND N1 COMPONENT DESCRIPTION
		FORM DESIGN REFERENCE GUIDE FOR PRINTERS
		IBM 1427 PLOTTER
05 MAGNETIC TAPE UNITS AND CONTROLS		
GA22-6866-5	GN32-#888	IBM SYSTEM/360 COMPONENT DESCRIPTION 2400 SERIES MAGNETIC TAPE UNITS 2803/2804 TAPE CONTROLS AND 2816 SWITCHING UNIT, MODEL 1
07 DIRECT ACCESS STORAGE UNITS AND CONTROL		
GA26-5756-7		IBM DISK PACK AND CARTRIDGE HANDLING PROCEDURES
13 SPECIAL AND CUSTOM FEATURES		
GL26-2114-#		IBM VIDEO DISPLAY WITH IBM 1800

International Business Machines Corporation, Library Services Department, 1133 Westchester Avenue, White Plains, N.Y. 10604

Requests for copies of the publications listed herein or for changes to the System Library Subscription Service (SL/SS) should be directed to your IBM representative or the IBM Branch Office serving your locality.

15 PHYSICAL PLANNING SPECIFICATIONS

ORDER NUMBER	TECHNICAL NEWSLETTERS		TITLE
GA26-5922-6	GN26-8242 GN26-8262	GN26-8253 GN26-8272	IBM 1800 INSTALLATION MANUAL - PHYSICAL PLANNING

19 ORIGINAL EQUIPMENT MANUFACTURERS' INFORMATION

GA26-3122-1	ORIGINAL EQUIPMENT MANUFACTURERS' INFORMATION		
GA26-3591-3	IBM 1443 PRINTER MODEL 1 AND 2		
GA26-3625-8	IBM 1801 AND 1802 PROCESSOR-CONTROLLERS		
GA26-3626-8	ORIGINAL EQUIPMENT MANUFACTURER'S INFORMATION		
	SYSTEMS REFERENCE LIBRARY MANUAL		
	IBM 1828 ENCLOSURE, IBM 1851 MULTIPLEXER TERMINAL,		
	IBM 1856 ANALOG OUTPUT TERMINAL, ORIGINAL EQUIPMENT		
	MANUFACTURER'S INFORMATION		
	IBM 2318 DISK STORAGE DRIVE, MODELS A1, A2, AND A3		
	ORIGINAL EQUIPMENT MANUFACTURER'S INFORMATION		

PROGRAMMING SYSTEMS

Programming Systems publications (Subject Codes 20 through 50) are organized according to Programming Systems - General, Card, Tape and Disk. Within each group, the publications are in subject code order. The subject code precedes each title. The codes and the subject headings they identify are:

20 Programming Systems - General	30 Input/Output Control System
21 Symbolic Assembly System	36 Supervisor, Monitor
25 FORTRAN	50 Systems Techniques

of the program described. The intended for use by persons involved in program maintenance or alteration of program design, and may not be made available without the approval of local IBM Management.

Users should also check the following Subject Codes for additional material pertaining to programming systems: 60, 80, 85, 95 and 99.

20 PROGRAMMING SYSTEMS - GENERAL

GC20-1638-7	**GN20-8031-23	CATALOG OF PROGRAMS FOR IBM 1130 COMPUTING SYSTEM AND IBM 1800 DATA ACQUISITION AND CONTROL SYSTEM	
GC26-3751-1	GN33-8068 GN33-8017	GN33-8030 GN33-8069	IBM 1800 CARD/PAPER TAPE PROGRAMMING SYSTEM, OPERATOR'S GUIDE
GI26-3628-1	GI26-8089	PROGRAM NUMBERS 1800-UT-002, 1800-UT-001, 1800-LN-004, 1800-LN-003, 1800-PO-000	
		IBM 1130/1800 CARD/PAPER TAPE PROGRAMMING SYSTEMS, PROGRAM LOGIC MANUAL, PROGRAM NUMBERS 1130-UT-001, 1800-UT-001, 1130-LN-001,2; 1800-LN-003,4; 1130-SP-001,2; 1800-AS-005,6; 1130-PO-001,2; 1800-PO-007,8	

21 SYMBOLIC ASSEMBLY SYSTEM

GC26-3778-8	**GN34-8054	IBM 1130/1800 ASSEMBLER LANGUAGE	
**GC26-5882-4	GN33-8045 GN26-8689	GN33-8079 GN34-8048	IBM 1800 ASSEMBLER LANGUAGE
		PROGRAM NUMBERS 1800-AS-005, 1800-AS-006	
		SYSTEMS REFERENCE LIBRARY	

25 FORTRAN

**GC26-3715-7	IBM 1130/1800 BASIC FORTRAN IV LANGUAGE		
	SYSTEMS REFERENCE LIBRARY		

30 INPUT/OUTPUT CONTROL SYSTEM

ORDER NUMBER	TECHNICAL NEWSLETTERS		TITLE
GC26-3723-1	GN34-8838		IBM 1800 TIME-SHARING EXECUTIVE SYSTEM SUBROUTINE LIBRARY PROGRAM NUMBERS: 1800-OS-001, 1800-LH-009
GC26-3724-2	GN26-8605	**GN34-8849	IBM 1800 MULTIPROGRAMMING EXECUTIVE OPERATING SYSTEM SUBROUTINE LIBRARY - PROGRAM NUMBER 1800-08-010
GC26-3755-2			IBM 1130/1800 PLOTTER SUBROUTINES
GC26-5888-4	GN33-8838		IBM 1800 SUBROUTINE LIBRARY PROGRAM NUMBERS 1800-LH-003, 1800-LH-004 SYSTEMS REFERENCE LIBRARY

36 SUPERVISOR, MONITOR

GC26-3703-1	GN34-8836		IBM 1800 TIME-SHARING EXECUTIVE SYSTEM CONCEPTS AND TECHNIQUES PROGRAM NUMBER 1800-OS-001 SYSTEMS REFERENCE LIBRARY
GC26-3718-4	GN26-8615	**GN34-8847	IBM 1800 MULTIPROGRAMMING EXECUTIVE OPERATING SYSTEM INTRODUCTION - SYSTEMS REFERENCE LIBRARY BULLETIN PROGRAM NUMBER 1800-OS-010
**GC26-3720-4			IBM 1800 MULTIPROGRAMMING EXECUTIVE OPERATING SYSTEM PROGRAMMER'S GUIDE - SYSTEMS REFERENCE LIBRARY BULLETIN PROGRAM NUMBER 1800-OS-010
GC26-3725-2	GN26-8606 **GN34-8850	GN26-8616	IBM 1800 MULTIPROGRAMMING EXECUTIVE OPERATING SYSTEM OPERATING PROCEDURES - SYSTEMS REFERENCE LIBRARY BULLETIN PROGRAM NUMBER 1800-OS-010
GC26-3727-2	GN26-8607 **GN34-8852	GN26-8617	IBM 1800 MULTIPROGRAMMING EXECUTIVE OPERATING SYSTEM ERROR MESSAGES AND RECOVERY PROCEDURES - SYSTEMS REFERENCE LIBRARY BULLETIN - PROGRAM NUMBER 1800-OS-010
**GC26-3732-1			1800 MULTIPROGRAMMING EXECUTIVE OPERATING SYSTEM 1800/2790 DATA COMMUNICATION SYSTEM PROGRAMMING
GC26-3754-4	GN34-8837		IBM 1800 TIME-SHARING EXECUTIVE SYSTEM OPERATING PROCEDURES, PROGRAM NUMBER 1800-OS-001, VERSION 3
GC26-3757-8	**GN34-8853		IBM 1800 MULTIPROGRAMMING EXECUTIVE OPERATING SYSTEM COMMUNICATIONS ADAPTER PROGRAMMING PROGRAM NUMBER 1800-OS-010
GY26-3702-2	GN34-8839		IBM 1800 TIME-SHARING EXECUTIVE SYSTEM PROGRAM LOGIC MANUAL PROGRAM NUMBER 1800-OS-001, VERSION 3
GY26-3726-1	GN26-8608 GN26-8610	GN26-8605 **GN34-8851	IBM 1800 MULTIPROGRAMMING EXECUTIVE OPERATING SYSTEM, PROGRAM LOGIC MANUAL (PROGRAM NUMBER 1800-OS-010)

50 SYSTEMS TECHNIQUES

GC26-3707-1			IBM 1800 - SYSTEM/360 ADAPTER AND 1827 DATA CONTROL UNIT PROGRAMMER'S GUIDE
-------------	--	--	--

60 APPLICATION PROGRAMS

NOTE: Publications in the following list which have a Yxx-prefixed form number are provided to IBM customers to meet their equipment capabilities and application needs. Distribution is limited to such customers and requires the approval of local IBM management.

GN20-8208-3			1800/1130 CONTROL OPTIMIZATION PROGRAM (COP/1800-1130) (1800-CC-01X) APPLICATION DESCRIPTION
GY20-8118-1			1800/1130 CONTROL OPTIMIZATION PROGRAM (COP/1800-1130) SYSTEM MANUAL PROGRAM NUMBER 1130-CC-01X
GN20-8351-1			1800/1130 CONTROL OPTIMIZATION PROGRAM (COP/1800-1130) (1800-CC-01X) USER'S MANUAL
**GN20-8881-1			1800 DISTRIBUTED SYSTEM PROGRAM, GENERAL INFORMATION MANUAL, PROGRAM NUMBER 1800-SV-003
**GN20-1142-8			1800 DISTRIBUTED SYSTEM PROGRAM, OPERATIONS GUIDE PROGRAM NUMBER 1800-SV-003
**GN20-1143-8			1800 DISTRIBUTED SYSTEM PROGRAM-PROGRAM REFERENCE MANUAL PROGRAM NUMBER 1800-SV-003
GN20-8884-1			HPX SPOOLING, GENERAL INFORMATION MANUAL, PROGRAM NUMBER 1800-SV-002
GN20-8977-8			HPX SPOOLING, PROGRAM DESCRIPTION MANUAL, PROGRAM NUMBER 1800-SV-002
GN20-8984-8			HPX SPOOLING OPERATIONS MANUAL, PROGRAM NUMBER 1800-SV-002
GY20-8668-8	**GN20-2463		HPX SPOOLING SYSTEM MANUAL, PROGRAM NUMBER 1800-SV-002
GN20-8261-8			1800 PROCESS SUPERVISORY PROGRAM (PROSPRO/1800) APPLICATION DESCRIPTION PROGRAM NUMBER 1800-CC-02X

ORDER NUMBER	TECHNICAL NEWSLETTERS	TITLE
GH28-#472-1	GN28-2149	1888 PROCESS SUPERVISORY PROGRAM (PROSPRO/1888) (1888-CC-82X) OPERATOR'S MANUAL
GH28-#474-1	GN28-2151	1888 PROCESS SUPERVISORY PROGRAM (PROSPRO/1888) (1888-CC-82X) USER'S MANUAL
GY28-#128-1	GY28-8249	1888 PROCESS SUPERVISORY PROGRAM (PROSPRO/1888) SYSTEM MANUAL PROGRAM NUMBER 1888-CC-82X
GH28-#473-1	GN28-2150	1888 PROCESS SUPERVISORY PROGRAM (PROSPRO/1888) (1888-CC-82X) LANGUAGE SPECIFICATIONS MANUAL
GH28-#212-2		1888 VEHICULAR TRAFFIC CONTROL SYSTEM (1888-UG-86X)
GH28-#336-2		1888 VEHICULAR TRAFFIC CONTROL SYSTEM (1888-UG-86X) OPERATOR'S MANUAL
GY28-#892-1		1888 VEHICULAR TRAFFIC CONTROL SYSTEM VERSION 2 PROGRAM NUMBER 1888-UG-86X

55 PROGRAM PRODUCTS

NOTE: The publications identified below with a "S" preceding the form number, are made available in conjunction with IBM program products. See your IBM representative for information concerning their availability. (Program product documentation, as identified by the "S", is not distributed under the SFL Subscription Service.) If a feature code is indicated, the document is available under the License Agreement for IBM Program Products.

GH28-#724-1	GN28-2319		1888 CHROMATOGRAPH MONITORING PROGRAM APPLICATION DESCRIPTION MANUAL PROGRAM NUMBER 5718-IX1
SH28-#861-S	SN28-2328	SN28-2376	1888 CHROMATOGRAPH MONITORING PROGRAM, OPERATIONS MANUAL PROGRAM NUMBER 5718-IX1
SH28-#862-S	SN28-2321	SN28-2375	1888 CHROMATOGRAPH MONITORING PROGRAM, PROGRAM DESCRIPTION, PROGRAM NUMBER 5718-IX1
GH28-#833-S			IBM 1888 CHROMATOGRAPH MONITORING PROGRAM PROGRAM NUMBER 5718-IX1
LY28-#594-S	LN28-2322		1888 CHROMATOGRAPH MONITORING PROGRAM, SYSTEM MANUAL PROGRAM NUMBER 5718-IX1 FEATURE CODE 8882
GH28-#715-S			IBM CLINICAL LABORATORY DATA ACQUISITION SYSTEM (CLDAS) APPLICATION DESCRIPTION MANUAL PROGRAM NUMBER 5718-H11
SH28-#731-S			IBM CLINICAL LABORATORY DATA ACQUISITION SYSTEM (CLDAS) PROGRAM REFERENCE MANUAL PROGRAM NUMBER 5718-H11
GH28-#772-S	**GN28-2338		CLINICAL LABORATORY MANAGEMENT SYSTEM (CLMS) APPLICATION DESCRIPTION MANUAL PROGRAM NUMBER 5718-H12
SH28-#823-S			IBM CLINICAL LABORATORY MANAGEMENT SYSTEM (CLMS) 5718-H12 PROGRAM DESCRIPTION MANUAL
SH28-#831-S			CLINICAL LABORATORY MANAGEMENT SYSTEM (CLMS) 5718-H12 OPERATIONS MANUAL
GH28-#825-1			CLINICAL LABORATORY MANAGEMENT SYSTEM (CLMS) PROGRAM NUMBER 5718-H12
LY28-#649-S			IBM CLINICAL LABORATORY MANAGEMENT SYSTEM (5718-H12) SYSTEM MANUAL
LY28-#678-S			CLINICAL LABORATORY MANAGEMENT SYSTEM (CLMS) HPX FEATURE CONVERSION MANUAL - PROGRAM NUMBER 5718-H12, FEATURE CODE 8887
SH28-#974-S	**SN28-2469		1888/2268 DATA ENTRY SYSTEM - PROGRAM NUMBER 5799-AAK RFG REFERENCE NUMBER N88718 PROGRAM DESCRIPTION AND OPERATOR'S MANUAL
GH28-#187-S			1888/2268 DATA ENTRY SYSTEM PROGRAM NUMBER 5799-AAK
**LY28-#668-1			1888/2268 DATA ENTRY SYSTEM SYSTEM MANUAL PROGRAM NUMBER 5799-AAK, REFERENCE NUMBER N88718
**SH28-#732-S			PROSPRO II (TSI/1888) PROCESS SYSTEMS PROGRAM LANGUAGE SPECIFICATIONS MANUAL PROGRAM NUMBER 5718-P81
**SH28-#733-S			PROSPRO II (TSI/1888) PROCESS SYSTEM PROGRAM PROCESS OPERATOR'S CONSOLE OPERATIONS MANUAL PROGRAM NUMBER 5718-P81
**SH28-#734-S			PROSPRO II (TSI/1888) PROCESS SYSTEMS PROGRAMS PROGRAM DESCRIPTION MANUAL PROGRAM NUMBER 5718-P81
**GH28-#888-S			PROSPRO II PROGRAM PRODUCT SPECIFICATION PROGRAM NUMBER 5718-P81
LY28-#582-S			PROSPRO II (TSI/1888) PROCESS SYSTEMS PROGRAM SYSTEM MANUAL VOLUME II PROGRAM LISTINGS PROGRAM NUMBER 5718-P81 FEATURE CODE 8888
LY28-#583-S			PROSPRO II (TSI/1888) PROCESS SYSTEMS PROGRAMS SYSTEM MANUAL - VOLUME I PROGRAM LOGIC PROGRAM NUMBER 5718-P81 FEATURE CODE 8888
GH28-#768-S	GN28-2334		INTRODUCTION TO THE 1888 REPORT PROGRAM GENERATOR PROGRAM NUMBER 5781-RG1
SH28-#774-S	GN28-2335		1888 REPORT PROGRAM GENERATOR (RPG) LANGUAGE SPECIFICATIONS MANUAL PROGRAM NUMBER 5781-RG1

ORDER NUMBER	TECHNICAL NEWSLETTERS	TITLE
SH28-8779-8	SN28-2336	1888 REPORT PROGRAM GENERATOR (RPG) OPERATIONS MANUAL PROGRAM NUMBER 5718-RG1
GH28-4818-8		1888 REPORT PROGRAM GENERATOR PROGRAM PRODUCT SPECIFICATIONS PROGRAM NUMBER 5781-RG1
LY88-8534-8		1888 REPORT PROGRAM GENERATOR (RPG) SYSTEM MANUAL, VOLUME 2: LISTINGS PROGRAM NUMBER 5718-RG1, FEATURE CODE 8886
LY28-8533-8	LN28-2337	1888 REPORT PROGRAM GENERATOR (RPG) SYSTEM MANUAL VOLUME I PROGRAM NUMBER 5718-RG1 FEATURE CODE 8883
**GH28-4145-8		IBM 1138 AND 1888 SUBROUTINE LIBRARY MATHEMATICS (SL-MATH) SPECIFICATIONS - PROGRAM NUMBER 5711-IX2

67 FIELD DEVELOPED PROGRAMS

GB21-8848-8		A SYSTEM FOR COMPUTERIZING MEDICAL EXAMINATION AVAILABILITY NOTICE - PROGRAM NUMBER 5798-AAP
GB21-8138-8		1888/2798 HOSPITAL DATA COLLECTION AND COMMUNICATION PROGRAM NUMBER 5798-ACA
**GB21-8133-8		IBM 1888 BATCH DYE CONTROL SYSTEM - AVAILABILITY NOTICE PROGRAM NUMBER 5798-ACB
GB21-8193-8		PROSPRO/1888 OPERATOR CONSOLE SUPPORT TSI/NPI AVAILABILITY NOTICE - PROGRAM NUMBER 5798-ADA
GB21-8196-8		PROSPRO/1888/NPI AVAILABILITY NOTICE PROGRAM NUMBER 5798-ADD

88 INSTALLATION SUPPLIES

GX28-1734-8		1138 - 1888 BINARY CARD TEMPLATE
GX28-1755-8		IBM PROSPRO/1888 MISCELLANEOUS DATA PROGRAM NUMBERS 5718-P81, 1888-CC-82X
GX28-8828-1		FLOWCHARTING TEMPLATE
GX26-3573-3		IBM PHYSICAL PLANNING TEMPLATE, 1888 DATA ACQUISITION AND CONTROL SYSTEM
GX26-3635-1		1888 ANALOG INPUT SIGNAL CHART
GX26-3636-8		IBM CONTROL SYSTEMS, 1888 DATA ACQUISITION AND CONTROL SYSTEM - ANALOG OUTPUT SIGNAL CHART
GX26-3637-8		IBM CONTROL SYSTEM, 1888 DATA ACQUISITION AND CONTROL SYSTEM - DIGITAL INPUT SIGNAL CHART
GX26-3638-8		IBM CONTROL SYSTEMS, 1888 DATA ACQUISITION AND CONTROL SYSTEM - DIGITAL OUTPUT SIGNAL CHART
GX28-6383-8		REFERENCE CARD, FORTRAN IV
GX33-8888-8		1138/1888 ASSEMBLER CODING FORM PROGRAM NUMBERS 1138-SP-882, 1888-AS-885, 1888-AS-886

85 REFERENCE SUMMARIES

✓ GX26-1587-8		IBM REFERENCE CARD, DECIMAL/HEXADECIMAL INTEGER CONVERSION CHART
GX26-1588-8		IBM REFERENCE CARD, DECIMAL/HEXADECIMAL FRACTION CONVERSION CHART
**GX26-1594-3#		IBM 1888 REFERENCE SUMMARY NPI CONTROL STATEMENTS PROGRAM NUMBER 1888-OS-818
✓ GX26-1594-2#		IBM 1138/1888 ASSEMBLER LANGUAGE STATEMENTS SUMMARY - SRL BULLETIN
✓ GX26-3788-8	GN34-8862	REFERENCE SUMMARY
✓ GX26-5624-4		IBM 1888 DATA ACQUISITION AND CONTROL SYSTEM
✓ S229-5839-2		1888 DATA ACQUISITION AND CONTROL SYSTEM - HANDBOOK

98 EDUCATION LITERATURE

G528-2327-1	GN23-8787	GN23-8785	IBM EDUCATION - A COURSE OF ACTION SYSTEMS SCIENCE EDUCATION
-------------	-----------	-----------	---

99 OTHER SUPPLEMENTARY INFORMATION

ORDER NUMBER	TECHNICAL NEWSLETTERS	TITLE
GC28-1748-1		BIBLIOGRAPHY OF APPLICATION PUBLICATIONS - STATE AND LOCAL GOVERNMENT INDUSTRY
GC28-1747-8		BIBLIOGRAPHY OF APPLICATION PUBLICATIONS EDUCATION INDUSTRY
GH28-8587-3		BIBLIOGRAPHY OF APPLICATION PUBLICATION FINANCE INDUSTRIES
GH28-8522-2#		BIBLIOGRAPHY OF APPLICATION PUBLICATIONS - DISTRIBUTION INDUSTRIES
GH28-8522-1#		BIBLIOGRAPHY OF APPLICATION PUBLICATIONS, PUBLIC UTILITY INDUSTRIES
GH28-8538-3		BIBLIOGRAPHY OF APPLICATION PUBLICATIONS - MEDIA INDUSTRIES
GH28-8531-2#		BIBLIOGRAPHY OF APPLICATION PUBLICATIONS INSURANCE INDUSTRY
GH28-8531-1#	GN28-2141	BIBLIOGRAPHY OF APPLICATION PUBLICATIONS MEDICAL INDUSTRIES
GH28-8536-2		IBM 1138/1888 MODULAR SYSTEM PROGRAMS (MSP/7)
GH28-8978-1	GN28-2459	HOST PREPARATION FACILITY - MICROFICHE LISTINGS
GJD1-1783-8		PROGRAM NUMBERS 1138-SV-881, 1888-SV-881
GY33-6883-2		IBM SYSTEM/368 PL/I LANGUAGE SPECIFICATIONS
S2C8-8151-1	S2C8-8158-56	MICROFICHE - EARLY WARNING
**G328-1621-25#	**S2C8-5176	1138/1888 FILE CARD
G328-1621-24#		IBM MARKETING PUBLICATIONS KWIC INDEX
	S2C8-5175-1	

SECTION 2: THE ABSTRACTS WHICH FOLLOW WILL BE INCLUDED IN THE NEXT EDITION OF THE BIBLIOGRAPHY. ENTRIES ADDED TO THIS SRL NEWSLETTER ARE IDENTIFIED BY A * IN THE RIGHT MARGIN.

GB21-8848

A SYSTEM FOR COMPUTERIZING MEDICAL EXAMINATION AVAILABILITY NOTICE - PROGRAM NUMBER 5798-AAP
This is a system to facilitate the collection and reporting of multiphasic medical data, including medical history and the results of various on-line and off-line list procedures.

GB21-8138

1888/2798 HOSPITAL DATA COLLECTION AND COMMUNICATION PROGRAM NUMBER 5798-ACA
This program provides for routing of messages and service requests between nursing stations and service areas of a hospital; it will print back at the originating station for verification, and automatically capture any charge and log it on the patient's record. Ancillary services for pharmacy, laboratory, and admissions are provided.

GB21-8133

IBM 1888 BATCH DYE CONTROL SYSTEM - AVAILABILITY NOTICE PROGRAM NUMBER 5798-ACE
The availability notice is a marketing oriented document that describes the purpose and capabilities of the program, advantages of design, and problems solved by the program referenced in the title.

GB21-8193

PROSPRO/1888 OPERATOR CONSOLE SUPPORT TSI/MPX AVAILABILITY NOTICE - PROGRAM NUMBER 5798-ADA
This program provides 1892 Model 11 Process Operator Console support for PROSPRO/1888/TSX (1888-CC-82X) and PROSPRO/1888/MPX (5798-ADD).

GB21-8196

PROSPRO/1888/MPX AVAILABILITY NOTICE PROGRAM NUMBER 5798-ADD
This program provides modifications to PROSPRO/1888, TYPE III program, to run under MPX, enabling the user to take advantage of the hardware feature supported only under MPX and the software features of MPX which are superior to TSX.

GC28-1746

BIBLIOGRAPHY OF APPLICATION PUBLICATIONS - STATE AND LOCAL GOVERNMENT INDUSTRY
The purpose of this bibliography and the associated classification system is to list and categorize IBM application publications that are pertinent to the state and local government industry.

GC28-1747

BIBLIOGRAPHY OF APPLICATION PUBLICATIONS EDUCATION INDUSTRY
The purpose of this bibliography and the associated classification system is to list and categorize IBM application publications that are pertinent to the Education Industry. Section I lists these publications by subject area. Section II contains an abstract of each publication in a form number sequence.
A periodic Bibliography of Application Publications (BAP) newsletter is published to keep the bibliography up to date. The newsletter is divided into two sections. Section I is an updated listing of application publications by application or industry. This section also includes any corrections to the bibliography and a list of superseded publications. Section II contains an abstract of each publication not included in the published bibliography.

SH28-8732

PROSPRO II (TSX/1888) PROCESS SYSTEMS PROGRAM LANGUAGE SPECIFICATIONS MANUAL PROGRAM NUMBER 5718-P81
PROSPRO II is a programming system for the IBM 1888 Data Acquisition and Control System. The system provides the user with a group of eleven standardized forms which are used to specify the parameters of data acquisition and control for industrial processes. Through the use of these forms scanning of process signals can be defined, limit checking can be performed, both supervisory and direct digital control (DDC) can be implemented, and advanced control techniques can be employed.
The system supports the IBM 1892 Model 11 Process Operator's Console which provides comprehensive man-machine-process interactive communications.
This manual provides detailed descriptions of the control algorithms that are used, of the ways to complete the forms, and illustrates the use of the system with several example problems.

SH28-8733

PROSPRO II (TSX/1888) PROCESS SYSTEMS PROGRAM PROCESS OPERATOR'S CONSOLE OPERATIONS MANUAL PROGRAM NUMBER 5718-P81
The IBM 1892 Process Operator's Console (RPQC88488) provides interactive man-machine-process communications, it displays status and dynamic information, and it functions with printers to supply the information concerning the process that is necessary for control.
This manual describes the operation of the 1892 Model 11 Process Operator's Console with the PROSPRO II system. The use and/or function of each button and display is described.

SH28-8734-#

PROSPRO 11(TSX/1888) PROCESS SYSTEMS PROGRAMS PROGRAM DESCRIPTION MANUAL PROGRAM NUMBER 5718-P81
This manual describes the generation of a PROSPRO 11 system, the card maintenance procedures, and the programming aids which can assist users in implementing PROSPRO 11 for a specific application.
Included in this manual are discussions of considerations which must be taken into account in order to interface control instrumentation to the IBM 1888 Data Acquisition and Control System operating under PROSPRO 11.

GH28-1142

1888 DISTRIBUTED SYSTEM PROGRAM. OPERATIONS GUIDE PROGRAM NUMBER 1888-SV-883
This manual explains the procedures to be followed for system generation of an MPX system incorporating the desired 1888 Distributed Program modules.
It is assumed the reader has knowledge of the 1888 Data Acquisition and Control System and the 1888 Multiprogramming Executive System and that he is familiar with the IBM 1888 Distributed System Program Program Reference Manual (GH28-1143).

GH28-1143-#

1888 DISTRIBUTED SYSTEM PROGRAM - PROGRAM REFERENCE MANUAL PROGRAM NUMBER 1888-SV-883
This manual describes the functional specifications of a group of subroutines and macro instructions which facilitate operation of an IBM 1888 Data Acquisition and Control System connected to multiple System/7s.
The manual also contains the functional specifications of programs which permit conversational entry of remote jobs into the IBM 1888 batch-processing stream. Appendices list the commands and remote error messages of the conversational remote job entry programs, the codes used in text transmission, and the error messages which may occur.

GH28-4888

PROSPRO II PROGRAM PRODUCT SPECIFICATION PROGRAM NUMBER 5718-P81
No abstract available.

GH28-8145

IBM 1138 AND 1888 SUBROUTINE LIBRARY MATHEMATICS (SL-MATH) SPECIFICATIONS - PROGRAM NUMBER 5711-IB2
The Program Product Specifications (PPS) describe the warranted specifications of the subject Program Product.

GJD1-1783

IBM 1138/1888 MODULAR SYSTEM PROGRAMS (MSP/7) HOST PREPARATION FACILITY - MICROFICHE LISTINGS PROGRAM NUMBERS 1138-SV-881, 1888-SV-881
This document contains Type I OS program listings and DOS/OS PTF listings.