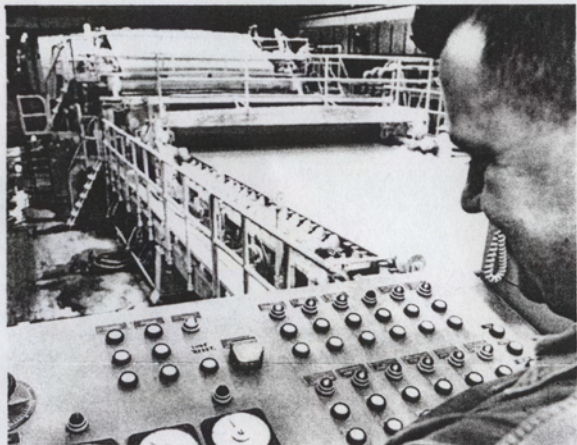


From Biomedical Lab to Tire Factory to Oil Refinery, the 1300 Is at Work

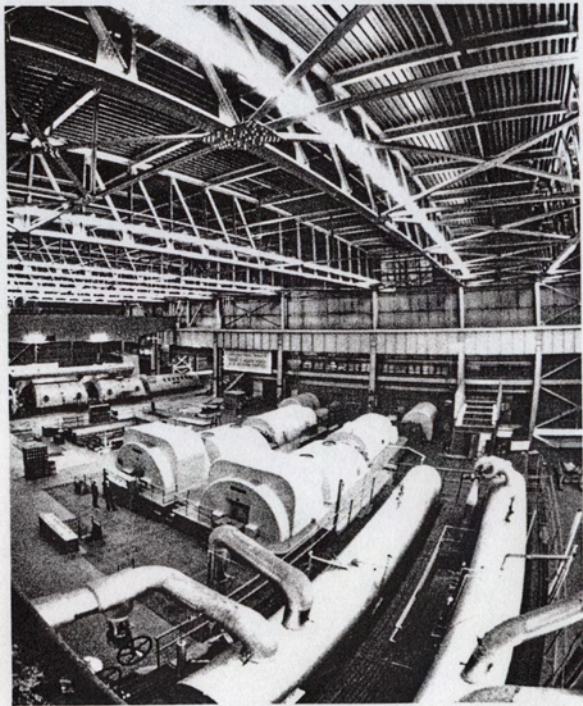
WHITE PLAINS: The diversity and number of industrial and scientific applications of the IBM 1800 data acquisition and control system are growing rapidly around the nation.

"The market served by the IBM 1800 System is one of the most exciting segments of the computer business today," says F. G. Rodgers, President of the Data Processing Division. "The digital computer is coming 'of age in real-time data acquisition and control. We expect to see very large growth in the use of general purpose computers for these functions."

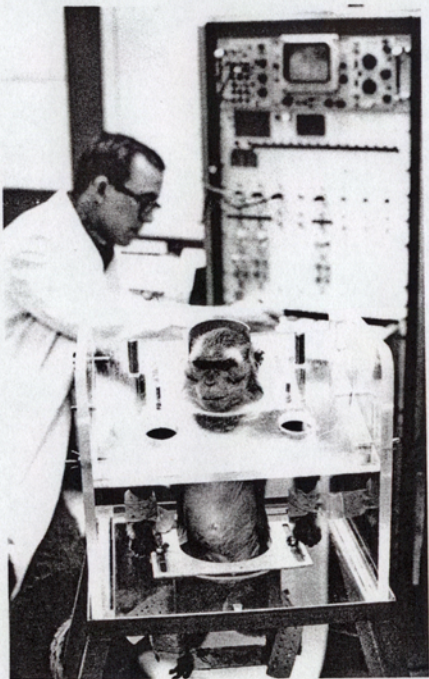
Mr. Rodgers points out that IBM has established special marketing teams and seven Data Acquisition and Control Systems (DACS) centers to anticipate and support the company's marketing efforts in this area. "These," he adds, "are proving to be an asset in our continuing success with the 1800 system."



Paper-making process at Kimberly-Clark Corporation plant, West Carrollton, O., first under direct digital control of an IBM 1800 system. Operator is reading information on instrument panel.

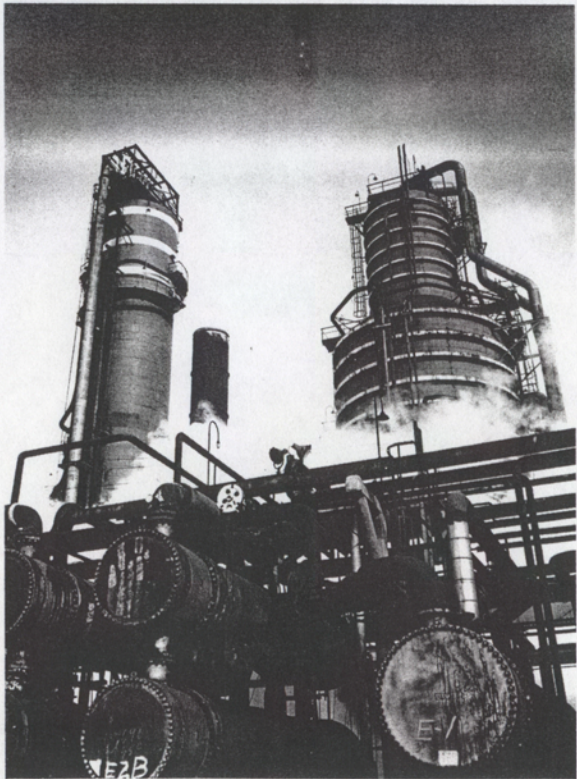


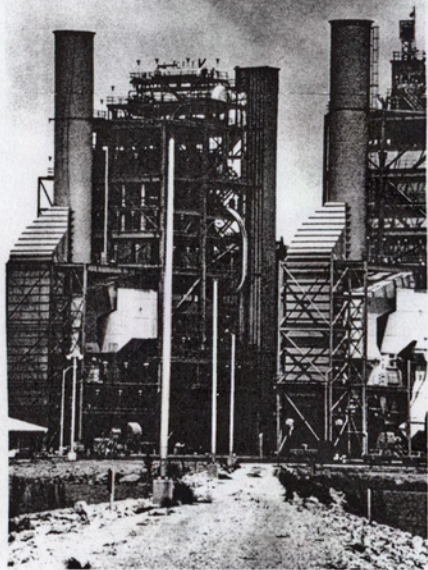
An IBM 1800 system is monitoring the temperatures, pressures and flows of the turbine, generator and boiler in this power plant at West Olive, Mich., of the Consumers Power Company of Jackson, Mich. The computer produces information used by operators to control the power plant and provides a permanent record of operations.



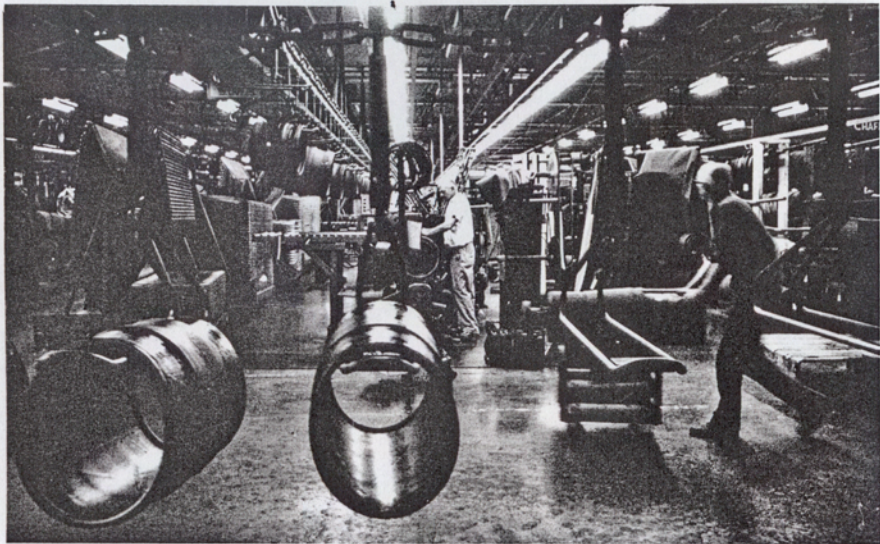
Effects of air pollution are measured in experiments at Hazleton Laboratories, Inc., Reston, Va., using an IBM 1800 system. Readings are being made of the air flow, volume and pressure in the monkey's lungs for real-time computer analysis.

This 150,000 barrel-a-day crude distillation unit at American Oil Company's Whiting, Indiana, refinery is controlled for optimum performance by an IBM 1800 computer, located approximately one-half mile away.

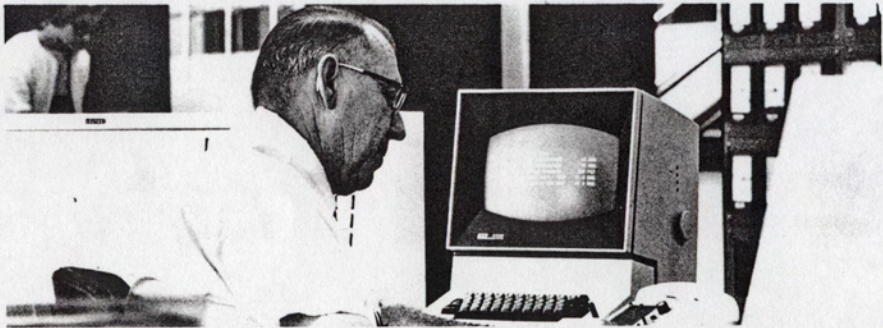




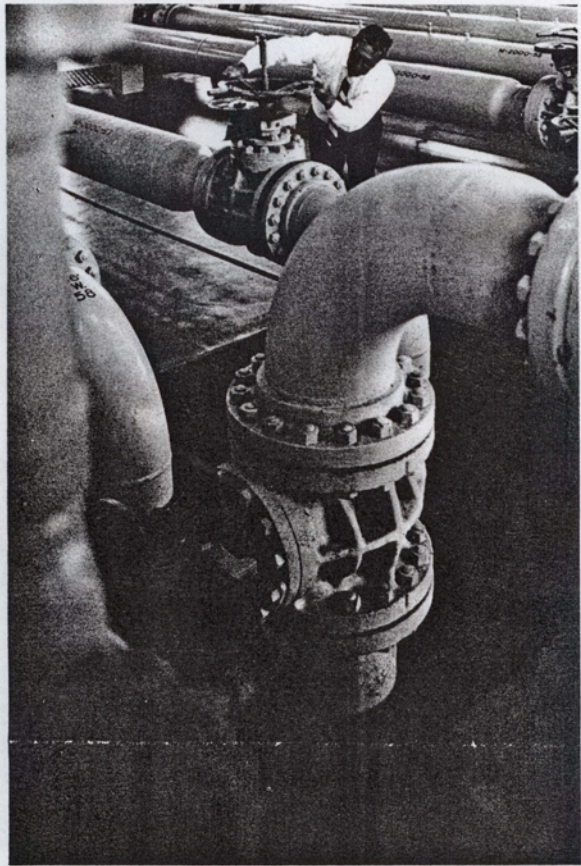
Six-story-high steam turbine generator plant of City Public Service Board, San Antonio, Tex., uses an IBM 1800 system to provide data used by operators for optimum control of plant.



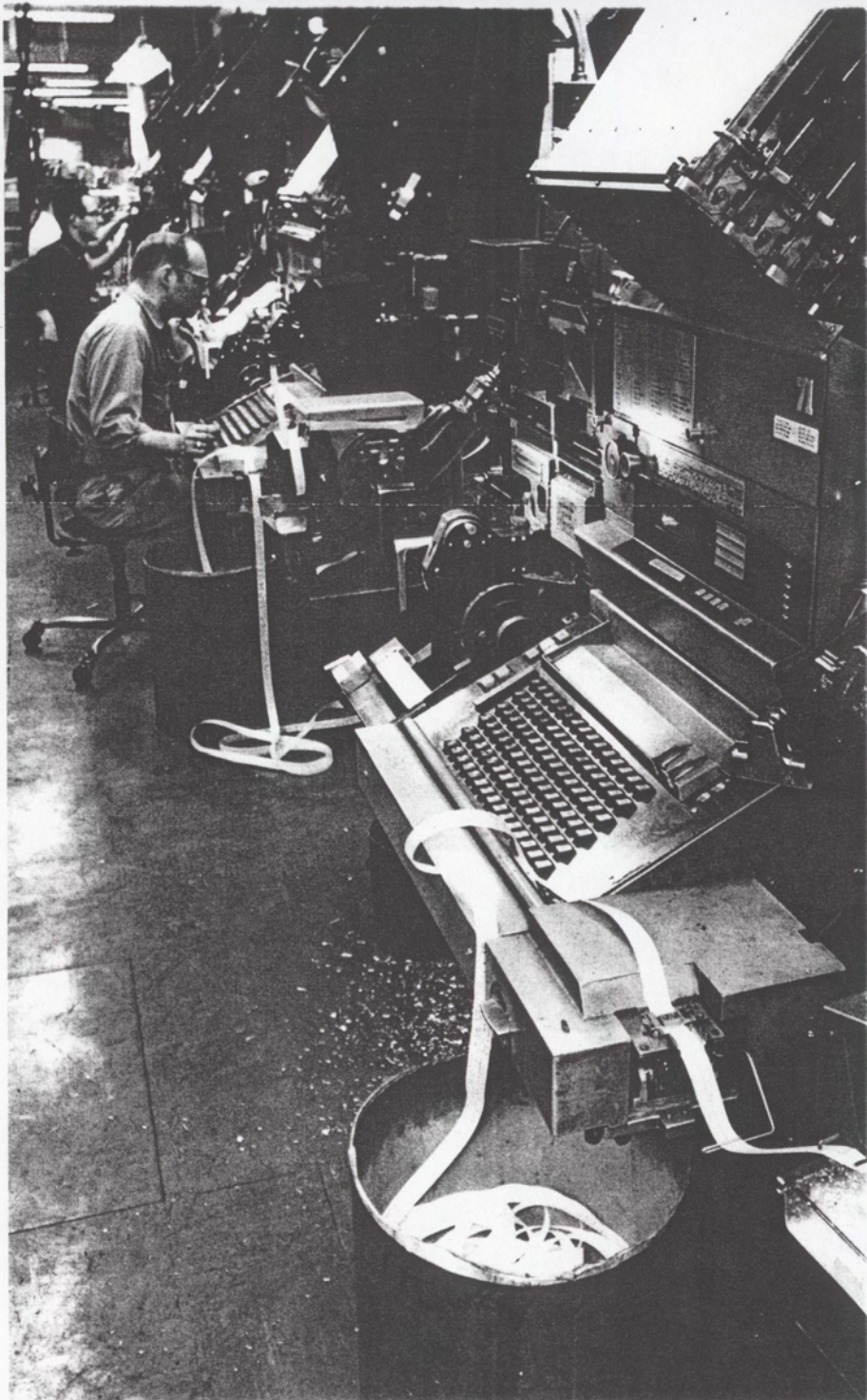
At The Kelly-Springfield Tire Company, Cumberland, Md., an IBM 1800 computer monitors the tire-making process and reports production problems by type and location. "Green tires" on conveyor in foreground head for presses to be shaped, molded and vulcanized.



Plant operator at San Antonio City Water Board works in control room with 2260 display linked to an IBM 1800 computer, which controls the temperature of water used in air-conditioning the pavilions in nearby HemisFair. System in the municipally-owned cooling and heating plant is also monitoring the pumping and distribution of well-water throughout the Texas city.



At the natural gas distribution center of the Southern California Gas Company in Los Angeles, an IBM 1800 system monitors gas pressures throughout the company's network and provides information needed to adjust gas flow.



An IBM 1800 computer at the Evening Star in Washington, D. C., produces a paper control tape used to operate this hot-metal typesetting machine. Tape produces justified lines of copy with hyphens as needed. Computer-produced tapes also operate photocomposition machines.